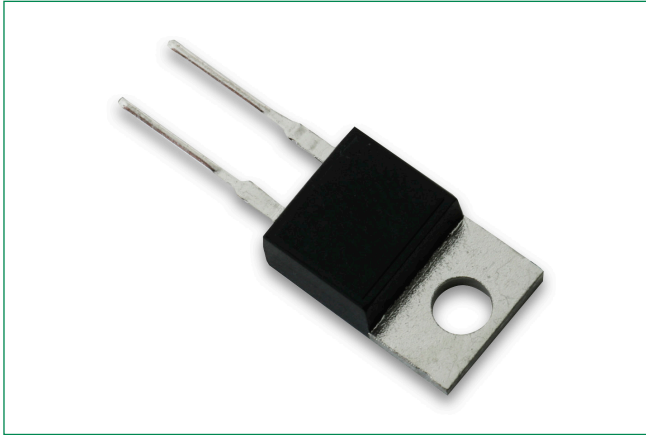
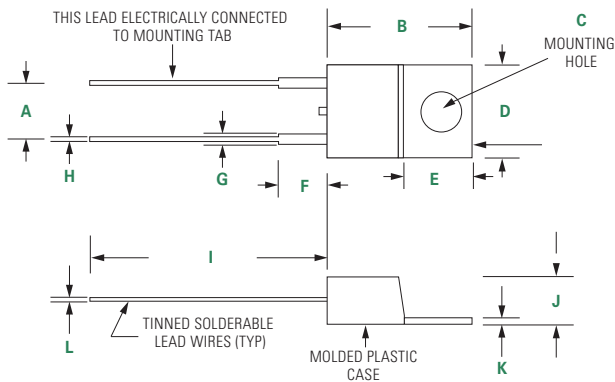


# TO-220 Series Thermistor Probe



## Dimensions



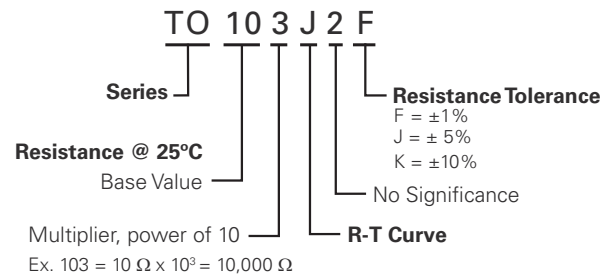
Dimensions in inches.

A	B	C	D	E	F
0.200" ± 0.010" C-C	0.595" ±0.035"	0.150" ±0.011" Diam	0.400" ±0.020"	0.250" ±0.020"	0.250" Max
G	H	I	J	K	L
0.057" ±0.013"	0.033" ±0.013"	0.531" ±0.031"	0.165" ±0.025"	0.050" ±0.006"	0.020" ±0.005"

## Description

Littelfuse offers TO220 probe assemblies suitable for a wide range of temperature sensing applications. If the electrical characteristics on this product won't work for your requirements, please contact us for further assistance.

## Part Numbering System



Note: Not all combinations of Part Number codes are available. Contact Littelfuse for details.

## TO-220 Series Thermistor Probe

### Specifications

Part Number	Resistance Ohms @25°C	Resistance Tol. ± % @ 25°C	R-T Curve	Temperature Coefficient (% / °C) @ 25°C	Beta (K) 0-50°C	Temperature Rating (°C)
TO502J2J	5000	5	J	-4.4	3892	-55 to +150
TO103J2F	10000	1	J	-4.4	3892	-55 to +150
TO103J2J	10000	5	J	-4.4	3892	-55 to +150
TO103J2K	10000	10	J	-4.4	3892	-55 to +150

**Disclaimer Notice** - Information furnished is believed to be accurate and reliable. However, users should independently evaluate the suitability of and test each product selected for their own applications. Littelfuse products are not designed for, and may not be used in, all applications. Read complete Disclaimer Notice at: [www.littelfuse.com/disclaimer-electronics](http://www.littelfuse.com/disclaimer-electronics)