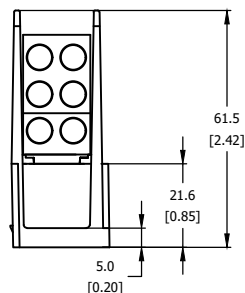
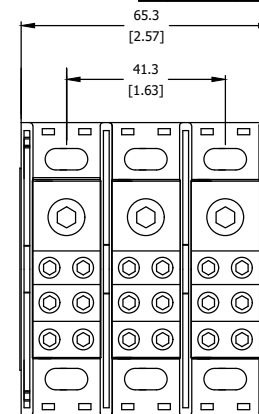
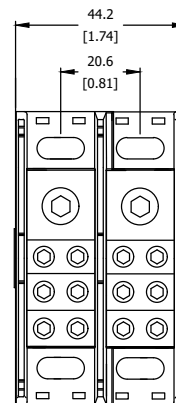
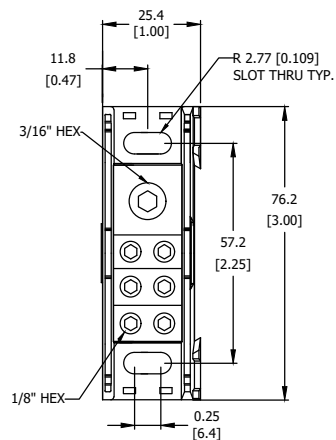
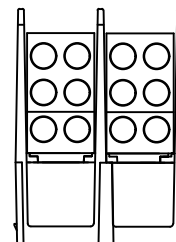


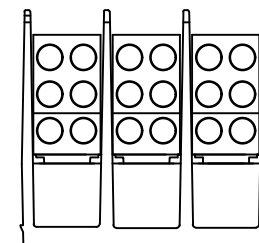
PRODUCT INFORMATION  
PRINTED ON SIDE OF  
BLOCK



0LD25801ZXDIN



0LD25802ZXDIN



0LD25803ZXDIN

# **SPECIFICATIONS:**

AGENCY INFORMATION:  
UL RECOGNIZED (FILE E171395)  
CSA CERTIFIED (FILE LR700111)

MATERIALS:  
HIGH IMPACT THERMOPLASTIC  
TEMPERATURE RATING 125°C (265°F)  
CONNECTOR: ALUMINUM, TIN PLATED

TERMINATION:  
LINE = (1) 2/0-14 AWG  
LOAD = (6) #4-14 AWG



AMP RATING PER POLE: 175A Cu  
BASED ON NEC TABLE 310-16, 75°C WIRE

VOLTAGE RATING: 600V

TORQUE:  
LINE: 2/0-6 AWG 13.6 Nm (120 LB-IN)  
#8 AWG 4.5 Nm (40 LB-IN)  
#10-14 AWG 4 Nm (35 LB-IN)  
LOAD: #4-14 AWG 4 Nm (35 LB-IN)

TOLERANCE (UNLESS OTHERWISE SPECIFIED):  
2 PLACE ± 0.76 [0.03]  
3 PLACE ± 0.38 [0.015]

REVISION		
REV	DATE	DESCRIPTION
A	9/21/17	518192GCP - RELEASE MRY
B	8/20/24	538077ECP/C - REMOVE 0LD2580AZXDIN MRY
C	1/31/25	528429ECP/D - CHANGE LARGE HEX LEADER TO 3/16 MRY

●	DENOTES CRITICAL CHARACTERISTICS.		
CPK	DENOTES CPK DIMENSIONS, -MINIMUM CPK VALUE		
ST	DENOTES A CHARACTERISTIC THAT PROVIDES AN INDICATION OF PROCESS PERFORMANCE. PROCEDURE FOR MEASUREMENT AND TRACKING TO BE DEFINED IN LITTELFUSE INSPECTION INSTRUCTIONS.		
CP	DENOTES CP DIMENSIONS, -MINIMUM CP VALUE MUST BE WITHIN THE DIMENSIONAL LIMITATIONS SHOWN ON DRAWING AND INITIALLY LOCATED TO ALLOW FOR MAXIMUM TOOL LIFE.		
MATL SPEC		FINISH	
DRW mryork	DATE 9/5/2017	SCALE NTS	FINISH GOOD WT  GRAMS/PIECE
UNLESS OTHERWISE SPECIFIED, DIMENSIONS ARE IN MILLIMETERS, DIMENSIONS IN BRACKETS [ ] ARE INCHES DIMENSIONING AND DO NOT INCLUDE PLATING. TOLERANCING TO BE INTERPRETED IN ACCORDANCE WITH ANSI Y14.5M-1994			
3RD ANGLE PROJECTION 	TOLERANCE UNLESS OTHERWISE SPECIFIED ONE PLACE DEC ± .25 [.01] FRACTION ± TWO PLACE DEC ± .100 [.004] ANGULAR ±1°		
TITLE 0LD2580-DIN SERIES DISTRIBUTION BLOCK OUTLINE			
 <b>Littelfuse</b> <sup>®</sup> CHICAGO, ILLINOIS 60631		REVISION C	DRWG NO. 0L-LD2580DIN
			SHEET 1 OF 1