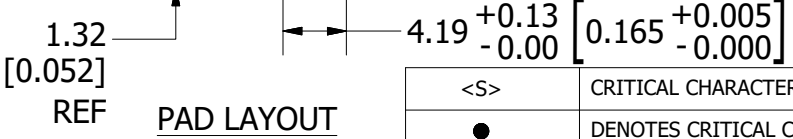
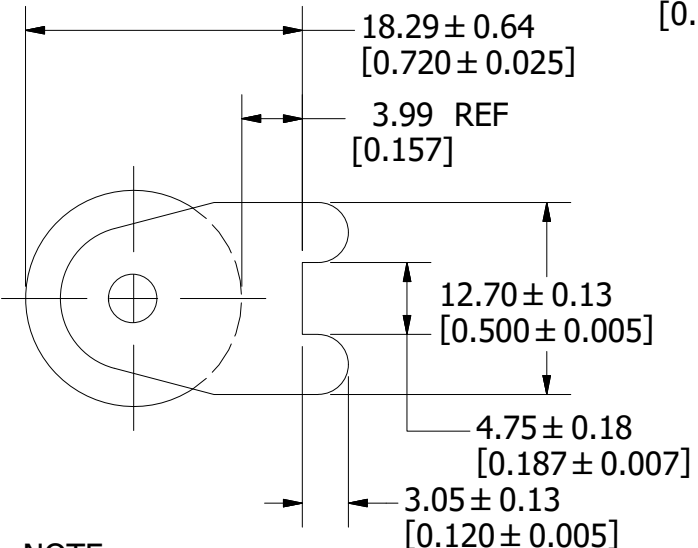
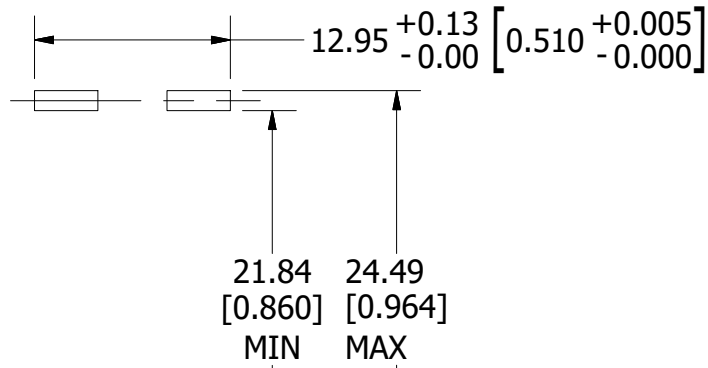
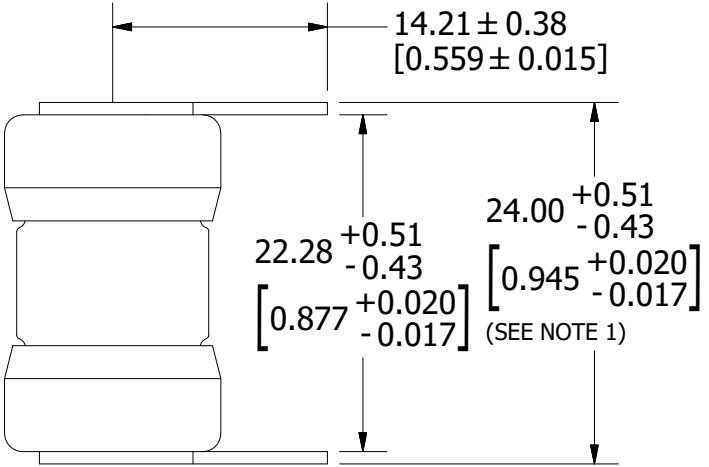


REVISION		
REV	DATE	DESCRIPTION
H	10/20/20	522885ECP/D - REDRAW IN INVENTOR, ADD METRIC DIMENSIONS MRY



NOTE:
1. MEASUREMENT TAKEN AT END OF TERMINALS.

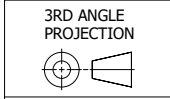
LEAD-FREE SOLDERING PROFILE:
 PRE-HEAT: ABOVE 130°C FOR 75 SECONDS MAX
 REFLOW: 278°C FOR 8 SECONDS MAX
 TIME: 250 SECONDS MAX.
 MAX. TEMP: 280°C

<S>	CRITICAL CHARACTERISTIC FOR PART SAFETY/COMPLIANCE
●	DENOTES CRITICAL CHARACTERISTICS.
CPK	DENOTES CPK DIMENSIONS, -MINIMUM CPK VALUE
⊠	DENOTES A CHARACTERISTIC THAT PROVIDES AN INDICATION OF PROCESS PERFORMANCE. PROCEDURE FOR MEASUREMENT AND TRACKING TO BE DEFINED IN LITTELFUSE INSPECTION INSTRUCTIONS.
CP	DENOTES CP DIMENSIONS, -MINIMUM CP VALUE MUST BE WITHIN THE DIMENSIONAL LIMITATIONS SHOWN ON DRAWING AND INITIALLY LOCATED TO ALLOW FOR MAXIMUM TOOL LIFE.

A

MATL SPEC		FINISH	
DRW myork	DATE 9/22/2020	SCALE NTS	FINISH GOOD WT GRAMS/PIECE

UNLESS OTHERWISE SPECIFIED, DIMENSIONS ARE IN MILLIMETERS, DIMENSIONS IN BRACKETS [] ARE INCHES DIMENSIONING AND DO NOT INCLUDE PLATING. TOLERANCING TO BE INTERPRETED IN ACCORDANCE WITH ANSI Y14.5M-1994



TITLE	TLS-LS OUTLINE & PAD LAYOUT
--------------	-----------------------------

Littelfuse CHICAGO, ILLINOIS 60631	REVISION H	DRWG NO. OL-0TLS000LS	SHEET 1 OF 1
--	----------------------	---------------------------------	--------------