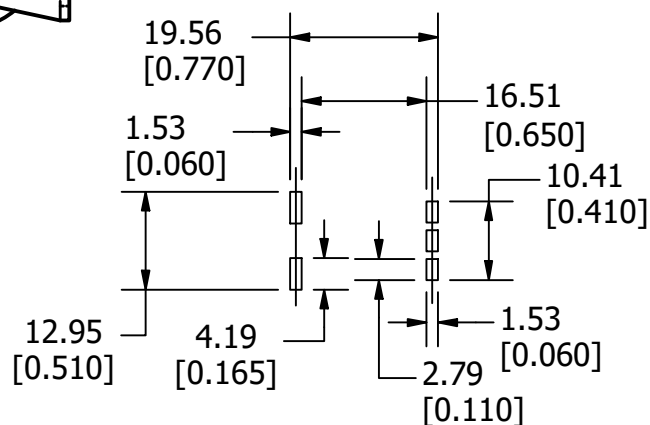
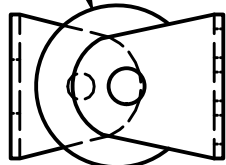


9.40 REF
[0.370]

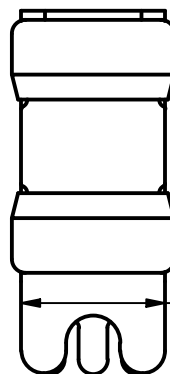
32.00 ± 1.52
[1.260 ± 0.060]

18.78 ± 0.64
[0.740 ± 0.025]

Ø14.30 ± 0.76
[Ø0.563 ± 0.030]



PAD LAYOUT



12.70 ± 0.76
[0.500 ± 0.030]

REVISION		
REV	DATE	DESCRIPTION
A	12/29/20	523247GCP - RELEASE MRY
B	2/24/25	528593ECP/D - ADD CAP TOLERANCE AND LEAD WIDTH MRY
C	3/4/25	528642ECP/D - UPDATE TOLERANCE & PAD LAYOUT DIMS MRY

<S>	CRITICAL CHARACTERISTIC FOR PART SAFETY/COMPLIANCE
●	DENOTES CRITICAL CHARACTERISTICS.
CPK	DENOTES CPK DIMENSIONS, -MINIMUM CPK VALUE
ST	DENOTES A CHARACTERISTIC THAT PROVIDES AN INDICATION OF PROCESS PERFORMANCE. PROCEDURE FOR MEASUREMENT AND TRACKING TO BE DEFINED IN LITTELFUSE INSPECTION INSTRUCTIONS.
CP	DENOTES CP DIMENSIONS, -MINIMUM CP VALUE MUST BE WITHIN THE DIMENSIONAL LIMITATIONS SHOWN ON DRAWING AND INITIALLY LOCATED TO ALLOW FOR MAXIMUM TOOL LIFE.

A

MATL SPEC		FINISH	
DRW myork	DATE 12/29/2020	SCALE NTS	FINISH GOOD WT GRAMS/PIECE

UNLESS OTHERWISE SPECIFIED, DIMENSIONS ARE IN MILLIMETERS, DIMENSIONS IN BRACKETS [] ARE INCHES DIMENSIONING AND DO NOT INCLUDE PLATING. TOLERANCING TO BE INTERPRETED IN ACCORDANCE WITH ANSI Y14.5M-1994

3RD ANGLE PROJECTION	
----------------------	--

TITLE TLS-V SERIES OUTLINE



REVISION	DRWG NO.	SHEET 1 OF 1 OUTLINE
C	OL-0TLS000V	