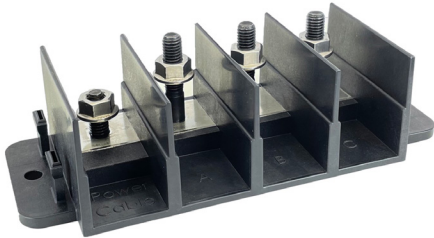


ZCASE® 4P-5P Series

400 A Bolt-Down Fuse Holders



FHZ416
(4P)
Cover included
(not shown)



FHZ415
(5P)

Description

ZCASE® 4P-5P Series 400A Bolt-Down Fuse Holders are four-position and five-position automotive fuse blocks that enable circuit-protected power distribution with ZCASE® fuses (sold separately). These DC power distribution blocks have thermoplastic bases and protective covers with UL-94 V-0 flammability ratings and have been tested to ISO 16750-3 standards for shock and vibration.

Web Resources

Download 2D print, installation guide and technical resources at: littelfuse.com/4P-5Pseries

Specifications

Max Voltage Rating:	32V, 80V
Agency Approval - Shock:	ISO16750-3 4.3
Agency Approval - Vibration:	ISO16750-3 4.1.2.7
Current Rating Continuous:	400A
Flammability Rating:	UL-94 V-0
Fuse Type:	ZCASE®
Input Terminals:	M8 Stud Mount Hole
Output Terminals:	M8 Stud, M10 Stud
Recommended Torque:	M8 Nut: 10-14 N-m M 10 Nut: 6~8 N-m
Operating Temperature (C):	-40°C to 85°C

Applications

- Heavy Trucks
- Medium-Duty Trucks
- Construction Equipment
- Agricultural Vehicles

Features and Benefits

- Four-position fuse holders accept ZCASE® M8 fuses and are rated for up to 32V
- Five-position fuse holders accept ZCASE® M10 fuses and are rated for up to 80V
- Thermoplastic base and cover have a UL-94 V-0 flammability rating
- Tested to ISO 16750-3 4.3 and ISO 16750-3 4.1.2.7 standards for shock and vibration to withstand harsh conditions that are common for commercial vehicles

Ordering Information

PART NUMBER	DESCRIPTION	CONTINUOUS CURRENT RATING	FUSE TYPE	MOUNTING METHOD	MAX VOLTAGE RATING
FHZ416	32V 400A Four-Position Bolt-Down Fuse Holder Base and Cover	400A	ZCASE	M8 Stud Mount Hole	32V
FHZ415	80V 400A Five-Position Bolt-Down Fuse Holder Base	400A	ZCASE	M10 Stud Mount Hole	80V
FHZ515	Five-Position Fuse Holder Cover	—	—	—	—