

828 Series

High Voltage Cartridge Fuses



Description

The 828 Series fuses are specifically designed and tested to the circuit protection needs of compact auto-electronics applications. Fuse rated for 1000 VDC with a high interrupt rating of 10 kA.

Features and Benefits

- Available in Through-hole (TH) and Bolt Down versions (ISO)
- RoHS-compliant and lead-free
- AEC-Q200 Qualified
- Recognized to UL/CSA/NMX 248-1 and UL/CSA/NMX 248-14

Applications

- On-Board Charger
- Power Distribution Unit

Web Resources



Download ECAD models, order samples, and find technical resources at www.littelfuse.com

Agency Approvals

Agency	Agency File Number	Ampere Range
	E10480	5A - 60A

Electrical Characteristics

Current Rating	% of Ampere Rating	Opening Time
5A - 60A	100%	4hrs, Min.
5A - 60A	135%	3600 seconds, Max.

Electrical Characteristics by Item

Amp Code	Amp Rating (A)	Voltage Rating (Vdc)	Interrupting Rating	Nominal Cold Resistance (mOhm)	Nominal Melting I ² t (A ² sec)	Agency Approvals
005.	5	1000	20KA@1000Vdc	40.5	39	x
010.	10			14.9	243	x
015.	15		10KA@1000Vdc	7.65	190	x
020.	20			4.90	536	x
025.	25			3.73	1190	x
030.	30			2.90	1500	x
040.	40			2.55	1950	x
050.	50			1.90	3100	x
060.	60			1.57	4800	x

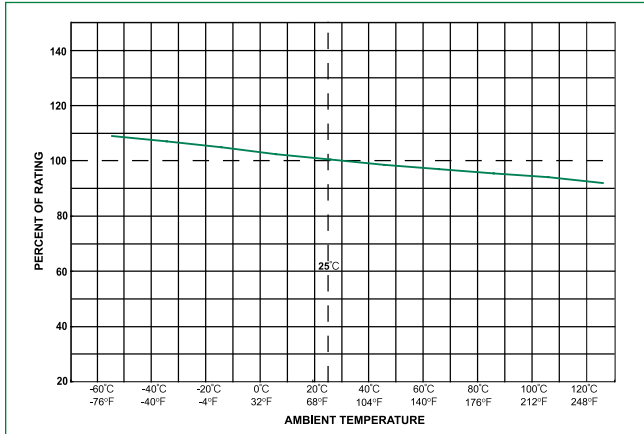
Note:

1. Unless otherwise stated, all specifications are referenced at room ambient temperature.
2. Nominal Cold Resistance: Resistance is measured at 10% of rated current, 25°C.

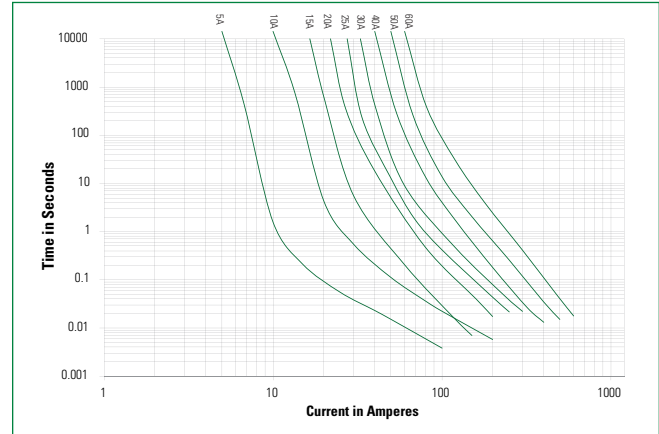
828 Series

High Voltage Cartridge Fuses

Temperature Re-rating curve



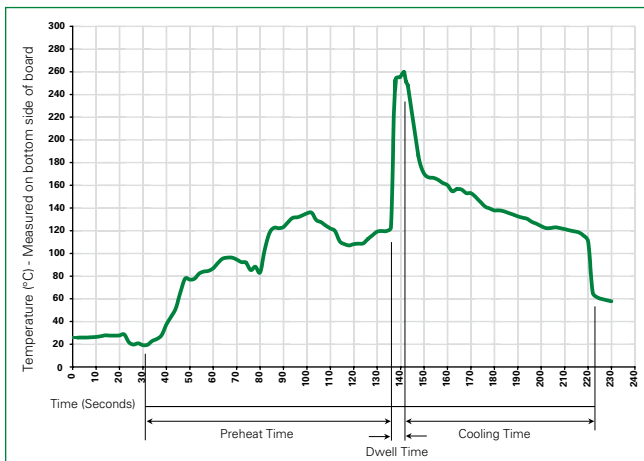
Average Time Current Curves



Product Characteristics

Materials	Body: Glass fiber Cap: Tin plated copper alloy/Ni plated copper alloy
Mechanical Shock	MIL-STD-202 Method 213
Vibration	MIL-STD-202 Method 204
Thermal Shock	JESD22-A104
Solderability	JESD22-B102E Method 1
Resistance to Solder Heat	MIL-STD-202 Method 210
Operating Temperature	-55°C to 125°C
Product Marking	Brand logo, current and voltage ratings

Soldering Parameters–Wave Soldering



Wave Parameter	Lead-Free Recommendation
Preheat: (Depends on Flex Activation Temperature)	(Typical Industry Recommendation)
Temperature Minimum	100 °C
Temperature Maximum	150 °C
Preheat Time	60–180 seconds
Solder Pot Temperature	260 °C Maximum
Solder Dwell Time	2–5 seconds

Recommended Hand-Solder Parameters:

Solder Iron Temperature: 350 °C +/- 5 °C
Heating Time: 5 seconds max.

Note: These devices are not recommended for IR or Convection Reflow process.

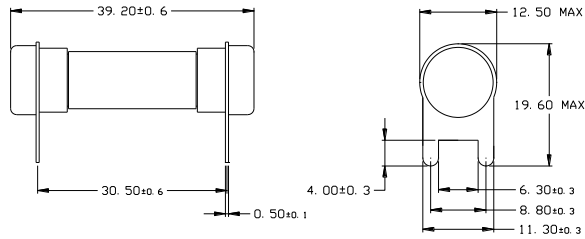
828 Series

High Voltage Cartridge Fuses

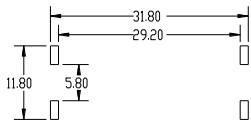
Dimensions (mm)

Through-hole (Option Code TH)

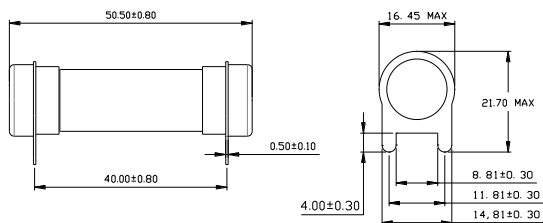
5A - 30A



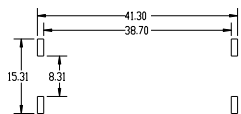
Recommended PCB layout



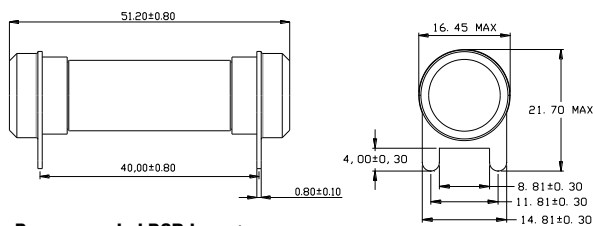
40A - 50A



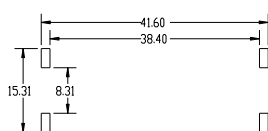
Recommended PCB layout



60A

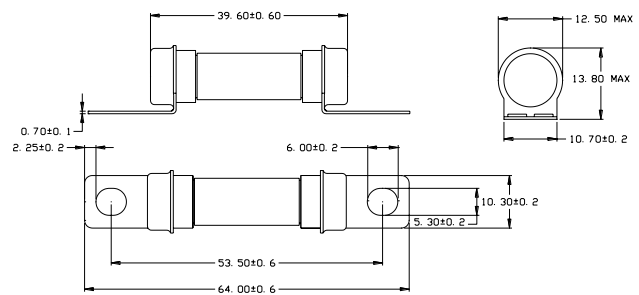


Recommended PCB layout

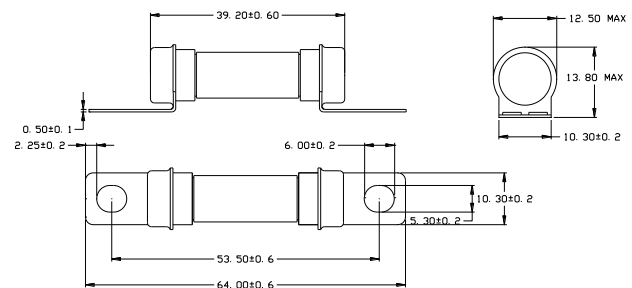


Bolt Down (Option Code ISO)

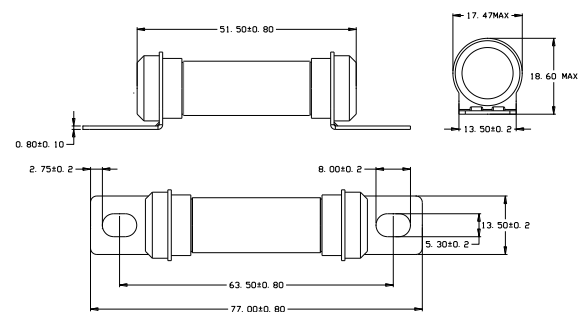
5A - 10A



15A - 30A



40A - 60A

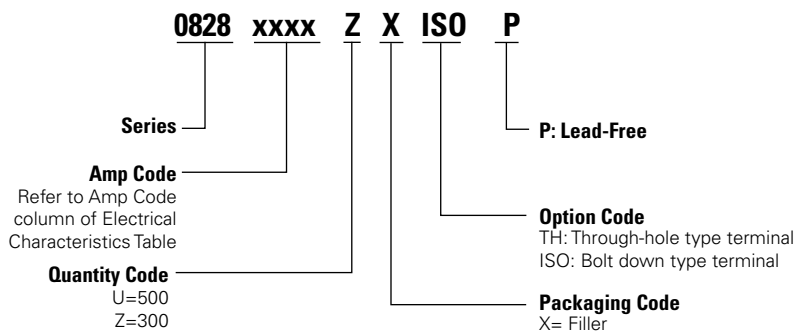


All dimensions in mm

828 Series

High Voltage Cartridge Fuses

Part Numbering System



Packaging

Packaging Option	Packaging Specification	Quantity	Quantity & Packaging Code	Reel Size
828 5A-30A Through Hole Version	NA	500	UXTH	N/A
828 40A-60A Through Hole Version	NA	300	ZXTH	N/A
828 5A-60A Bolt Down Version	NA	300	ZXISO	N/A

Disclaimer Notice - Information furnished is believed to be accurate and reliable. However, users should independently evaluate the suitability of and test each product selected for their own applications. Littelfuse products are not designed for, and may not be used in, all applications. Read complete Disclaimer Notice at <http://www.littelfuse.com/disclaimer-electronics>.