

Class RK5 Fuses

FLSR Series

600 V ac • Dual Element • Time Delay • $\frac{1}{10}$ –600 A



Description

The FLSR series dual-element, time-delay UL Class RK5 fuses are the most widely used fuse class. They offer superior performance and excellent protection for all types of circuits, especially those with motors. Precision manufactured parts ensure an accurate, consistent response to overloads and short-circuits. The FLSR fuses are also available in an indicating version, see the FLSR_ID series.

Features & Benefits

FEATURES	BENEFITS
Excellent short-circuit protection	Improves safety through faster response to fault currents
Dual-element design	Provides advanced short-circuit and overload protection
Current-limiting	Restricts fault currents to provide a high degree of circuit protection

Applications

- Service entrance switches
- Transformers
- Switchboard mains and feeders
- Motor control central mains and motor branch circuits
- All general purpose circuits

Specifications

Voltage Rating	Ac: 600 V Dc: 300 V
Ampere Range	$\frac{1}{10}$ –600 A
Interrupting Ratings	Ac: 200 kA rms symmetrical; 300 kA rms symmetrical (Littelfuse self-certified) Dc: 20 kA
Applicable Standards	UL 248-12, Class RK5
Country of Origin	Mexico

Class RK5 Fuses

FLSR Series

Certification & Compliance

UL	UL Listed (File: E81895)
CSA	CSA Certified (File: LR29862)

Accessories

LFR60 series fuse holder

Ordering Information

AMPERE	CATALOG NUMBER	PRODUCT MARKING	PACK QUANTITY	ORDERING NUMBER	UPC	AGENCY APPROVALS	
						UL	CSA
1/10	FLSR.100	FLSR 1/10 A	10	FLSR.100T	07945817011	•	•
15/100	FLSR.150	FLSR 15/100 A	10	FLSR.150T	07945817013	•	•
2/10	FLSR.200	FLSR 2/10 A	10	FLSR.200T	07945817018	•	•
1/4	FLSR.250	FLSR 1/4 A	10	FLSR.250T	07945817019	•	•
3/10	FLSR.300	FLSR 3/10 A	10	FLSR.300T	07945800092	•	•
4/10	FLSR.400	FLSR 4/10 A	10	FLSR.400T	07945817023	•	•
1/2	FLSR.500	FLSR 1/2 A	10	FLSR.500T	07945817024	•	•
6/10	FLSR.600	FLSR 6/10 A	10	FLSR.600T	07945800093	•	•
8/10	FLSR.800	FLSR 8/10 A	10	FLSR.800T	07945800094	•	•
1	FLSR001	FLSR 1A	10	FLSR001.T	07945817031	•	•
1 1/6	FLSR1.12	FLSR 1 1/6 A	10	FLSR1.12T	07945817032	•	•
1 1/4	FLSR1.25	FLSR 1 1/4 A	10	FLSR1.25T	07945817034	•	•
1 2/10	FLSR01.4	FLSR 1 2/10 A	10	FLSR01.4T	07945817036	•	•
1 1/2	FLSR01.5	FLSR 1 1/2 A	10	FLSR01.5T	07945817037	•	•
1 5/10	FLSR01.6	FLSR 1 5/10 A	10	FLSR01.6T	07945817038	•	•
1 8/10	FLSR01.8	FLSR 1 8/10 A	10	FLSR01.8T	07945817040	•	•
2	FLSR002	FLSR 2A	10	FLSR002.T	07945817041	•	•
2 1/4	FLSR2.25	FLSR 2 1/4 A	10	FLSR2.25T	07945817042	•	•
2 1/2	FLSR02.5	FLSR 2 1/2 A	10	FLSR02.5T	07945817043	•	•
2 8/10	FLSR02.8	FLSR 2 8/10 A	10	FLSR02.8T	07945817046	•	•
3	FLSR003	FLSR 3A	10	FLSR003.T	07945817047	•	•
3 3/10	FLSR03.2	FLSR 3 3/10 A	10	FLSR03.2T	07945817049	•	•
3 1/2	FLSR03.5	FLSR 3 1/2 A	10	FLSR03.5T	07945817051	•	•
4	FLSR004	FLSR 4A	10	FLSR004.T	07945817053	•	•
4 1/2	FLSR04.5	FLSR 4 1/2 A	10	FLSR04.5T	07945817054	•	•
5	FLSR005	FLSR 5A	10	FLSR005.T	07945817055	•	•
5 5/10	FLSR05.6	FLSR 5 5/10 A	10	FLSR05.6T	07945817056	•	•
6	FLSR006	FLSR 6A	10	FLSR006.T	07945817058	•	•
6 1/4	FLSR6.25	FLSR 6 1/4 A	10	FLSR6.25T	07945817059	•	•
7	FLSR007	FLSR 7A	10	FLSR007.T	07945817061	•	•

Class RK5 Fuses

FLSR Series

Ordering Information

AMPERE	CATALOG NUMBER	PRODUCT MARKING	PACK QUANTITY	ORDERING NUMBER	UPC	AGENCY APPROVALS	
						UL	CSA
7½	FLSR07.5	FLSR 7 ½A	10	FLSR07.5T	07945817062	•	•
8	FLSR008	FLSR 8A	10	FLSR008.T	07945817063	•	•
9	FLSR009	FLSR 9A	10	FLSR009.T	07945817064	•	•
10	FLSR010	FLSR 10A	10	FLSR010.T	07945817065	•	•
12	FLSR012	FLSR 12A	10	FLSR012.T	07945817066	•	•
15	FLSR015	FLSR 15A	10	FLSR015.T	07945817068	•	•
17½	FLSR17.5	FLSR 17 ½A	10	FLSR17.5T	07945817069	•	•
20	FLSR020	FLSR 20A	10	FLSR020.T	07945817071	•	•
25	FLSR025	FLSR 25A	10	FLSR025.T	07945817072	•	•
30	FLSR030	FLSR 30A	10	FLSR030.T	07945817073	•	•
35	FLSR035	FLSR 35A	10	FLSR035.T	07945817074	•	•
40	FLSR040	FLSR 40A	10	FLSR040.T	07945817075	•	•
45	FLSR045	FLSR 45A	10	FLSR045.T	07945817076	•	•
50	FLSR050	FLSR 50A	10	FLSR050.T	07945817077	•	•
60	FLSR060	FLSR 60A	10	FLSR060.T	07945817078	•	•
70	FLSR070	FLSR 70A	5	FLSR070.V	07945817079	•	•
75	FLSR075	FLSR 75A	5	FLSR075.V	07945800217	•	•
80	FLSR080	FLSR 80A	5	FLSR080.V	07945817080	•	•
90	FLSR090	FLSR 90A	5	FLSR090.V	07945817081	•	•
100	FLSR100	FLSR 100A	5	FLSR100.V	07945817082	•	•
110	FLSR110	FLSR 110A	1	FLSR110.X	07945817083	•	•
125	FLSR125	FLSR 125A	1	FLSR125.X	07945817084	•	•
150	FLSR150	FLSR 150A	1	FLSR150.X	07945817086	•	•
175	FLSR175	FLSR 175A	1	FLSR175.X	07945817087	•	•
200	FLSR200	FLSR 200A	1	FLSR200.X	07945817088	•	•
225	FLSR225	FLSR 225A	1	FLSR225.X	07945817089	•	•
250	FLSR250	FLSR 250A	1	FLSR250.X	07945817090	•	•
300	FLSR300	FLSR 300A	1	FLSR300.X	07945817091	•	•
350	FLSR350	FLSR 350A	1	FLSR350.X	07945817092	•	•
400	FLSR400	FLSR 400A	1	FLSR400.X	07945817093	•	•
450	FLSR450	FLSR 450A	1	FLSR450.X	07945817095	•	•
500	FLSR500	FLSR 500A	1	FLSR500.X	07945817096	•	•
600	FLSR600	FLSR 600A	1	FLSR600.X	07945817098	•	•

Class RK5 Fuses

FLSR Series

Dimensions

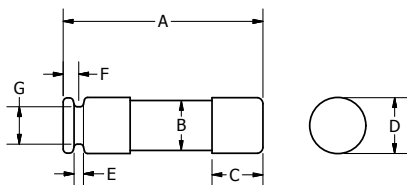


FIG. 1

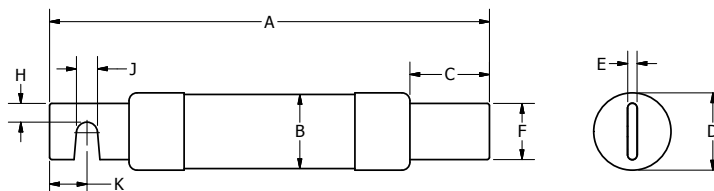


FIG. 2

AMPS	FIGURE NUMBER	DIMENSIONS INCHES (MM)									
		A	B	C	D	E	F	G	H	J	K
1/10-30	1	5 (127.0)	0.76 (19.2)	0.63 (15.9)	0.81 (20.7)	0.09 (2.4)	0.19 (4.7)	0.61 (15.5)	-	-	-
35-60	1	5.50 (139.7)	1 (25.1)	0.63 (15.9)	1.06 (27.0)	0.09 (2.4)	0.25 (6.4)	0.88 (22.2)	-	-	-
70-100	2	7.88 (200.0)	1.24 (31.5)	1.06 (27.0)	1.28 (32.6)	0.13 (3.2)	0.75 (19.1)	-	0.25 (6.4)	0.28 (7.1)	0.50 (12.7)
110-200	2	9.63 (244.5)	1.74 (44.2)	1.47 (37.3)	1.79 (45.4)	0.19 (4.8)	1.13 (28.6)	-	0.44 (11.1)	0.28 (7.1)	0.69 (17.5)
225-400	2	11.63 (295.3)	2.50 (63.1)	2 (50.8)	2.54 (64.6)	0.25 (6.4)	1.63 (41.3)	-	0.63 (15.9)	0.41 (10.3)	0.95 (24.0)
450-600	2	13.38 (339.7)	3 (76.0)	2.41 (61.1)	3.04 (77.3)	0.25 (6.5)	2 (50.8)	-	0.75 (19.1)	0.53 (13.5)	1.13 (28.6)

Current-Limiting Effects of FLSR Fuses

SHORT CIRCUIT CURRENT*	APPARENT RMS SYMMETRICAL CURRENT FOR VARIOUS FUSE RATINGS					
	30 A	60 A	100 A	200 A	400 A	600 A
5,000	1,250	2,100	3,200	5,000	5,000	5,000
10,000	1,600	2,850	4,300	7,250	10,000	10,000
15,000	1,800	3,400	5,000	8,500	13,500	15,000
20,000	2,250	3,800	5,500	9,500	15,750	19,000
25,000	2,450	4,100	5,700	10,250	17,000	21,000
30,000	2,700	4,500	6,400	10,750	18,000	23,000
35,000	2,900	4,800	6,700	11,500	19,000	24,250
40,000	3,000	5,000	7,250	12,000	19,500	27,000
50,000	3,400	5,250	7,750	13,000	21,000	29,000
60,000	3,600	5,750	8,100	14,000	22,000	30,500
80,000	3,900	6,250	9,000	15,000	24,000	33,000
100,000	4,300	6,750	9,750	16,500	26,000	35,000
150,000	4,500	7,600	11,100	19,000	28,000	38,000
200,000	4,600	8,400	12,250	21,500	30,000	40,000

*Prospective RMS Symmetrical Amperes Short-Circuit Current

Note: Data Derived from Peak Let-Thru Curves

Disclaimer Notice – Information furnished is believed to be accurate and reliable. However, users should independently evaluate the suitability of and test each product selected for their own applications. Littelfuse products are not designed for, and may not be used in, all applications. Read complete Disclaimer Notice at www.littelfuse.com/product-disclaimer.