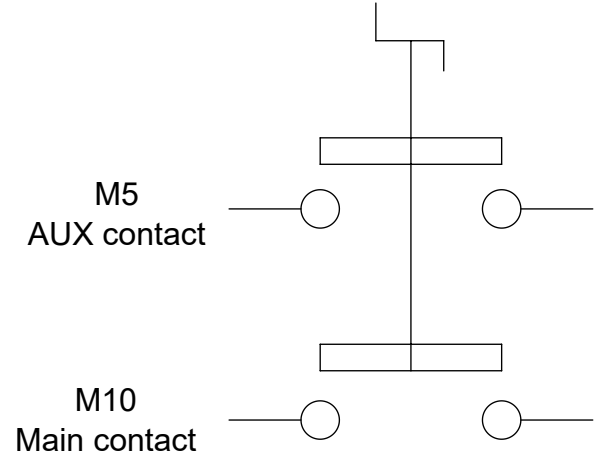
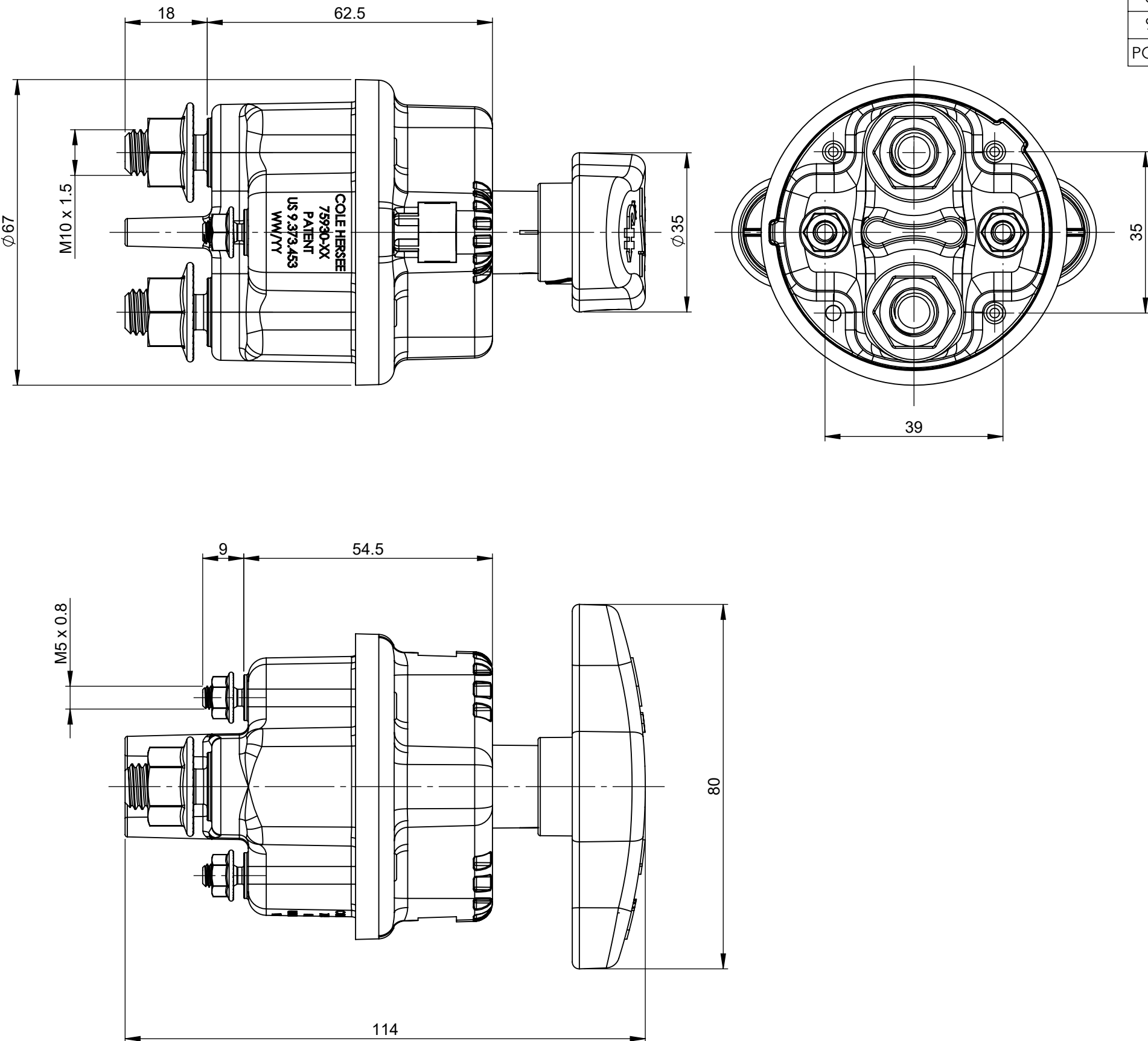
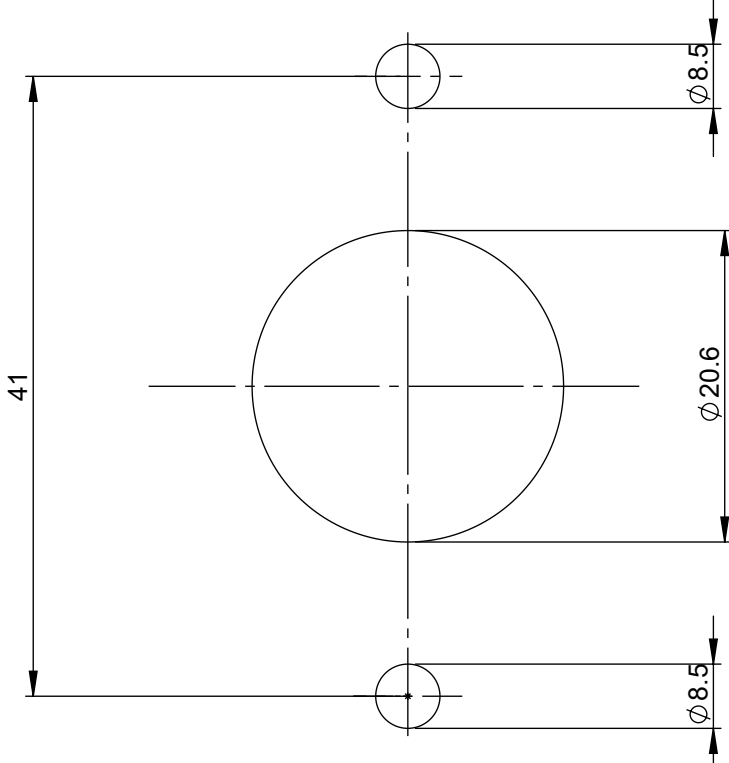


STATE OF SUPPLY: OFF POSITION

ELECTRICAL DIAGRAM



FIXING HOLES






REV.		DESCRIPTION		DATE		GCF / ECR		DESIGNED		APPROVED	
A		Initial release		23 Nov 2023				T.Bianchin		M.Tinto	

MASTER DISCONNECT SWITCH CONFIGURATION CHART			COMPLETE HANDLE LF SPARE PNS CHART		
PRODUCT NUMBER	HANDLE COLOR	PACKAGING	PRODUCT NUMBER	HANDLE COLOR	PACKAGING
75930-01-BP	RED	BLISTER	63989-A	RED	BULK
75930-02-BP	YELLOW	BLISTER	63988-A	YELLOW	BULK
75930-03-BP	BLACK	BLISTER	63990-A	BLACK	BULK
75930-01	RED	BULK			
75930-02	YELLOW	BULK			
75930-03	BLACK	BULK			
1	Complete handle	Thermoplastic reinforced PA66 class V-0, stainless steel	1	Pre-assembled	
2	Screw M8	Stainless steel	2	Included in the kit Not assembled	
3	Upper housing	Thermoplastic reinforced PA66 class V-0 colour black	1		
4	Nut M8 hex	Stainless steel	2	Included in the kit Not assembled	
5	Backplate	Thermoplastic reinforced PPA class V-0 colour black	1		
6	Nut M5 hex flange	Stainless steel	2	Pre-assembled	
7	Stud M5	Silver plated brass	2		
8	Nut M10 hex flange	Stainless steel	2	Pre-assembled	
9	Stud M10	Silver plated copper	2		
POS.	COMPONENT NAME	MATERIAL	Q.TY	NOTE	

CHARACTERISTICS
OPERATING TEMPERATURE: -40°C TO +85°C.
MAXIMUM CONTINUOUS CURRENT ON MAIN CONTACT:
- 200A WITH 90MM2 CABLES;
- 300A WITH 120MM2 CABLES.
MAXIMUM PEAK CURRENT ON MAIN CONTACT:
- 500A FOR 60SEC AND 1000A FOR 15SEC.
ANGLE AT WHICH IT DOES SWITCH ON: >25°.
CONTACTS OFFSET: MAIN CONTACT TURNS ON BEFORE AUX CONTACT; MAIN CONTACT TURNS OFF AFTER AUX CONTACT.
CONTINUOUS WORKING CURRENT ON AUX CONTACT: 10A.
MAXIMUM TEMPORARY CURRENT ON AUX CONTACT: 20A.
VOLTAGE RANGE: 9V TO 32V.
NUMBER OF MECHANICAL AND ELECTRICAL OPERATIONS: 5000.

INSTRUCTIONS
TORQUE FOR M5 CONNECTION: 2±0,5NM.
TORQUE FOR M10 CONNECTION: 18±2NM.
TORQUE FOR M8 MOUNTING SCREW: 14±2NM.
THE HANDLE SCREW TO BE SCREWED DOWN TO THE END WITH A TORQUE OF 0,6±0,2NM.
WALL THICKNESS: 0,8MM TO 8,5MM.

DIMENSIONS AND TOLERANCES IN MILLIMETERS, DEFINED ACCORDING TO ISO 1101-2017.								
linear dimensions								
0,5	>3	>6	>30	>120	>400	>1000		
3	6	30	120	400	1000	2000		
±0,1	±0,1	±0,2	±0,3	±0,5	±0,8	±1,2		
angle (for range of lengths)								
up to 10	>10	>50	>120	>400	>1000	>2000		
±1°	±0°30'	±0°20'	±0°20'	±0°10'	±0°10'	±0°10'		
●	FIT/ FUNCTION CRITICAL CHARACTERISTICS SYMBOL							
<S>	SAFETY/ COMPLIANCE CRITICAL CHARACTERISTICS SYMBOL							
CPK	DENOTES CPK DIMENSIONS MINIMUM CPK VALUE							
ST	DENOTES A CHARACTERISTIC THAT PROVIDES AN INDICATION OF PROCESS PERFORMANCE.PROCEDURE FOR MEASUREMENTAND TRACKINGTO BE DEFINED IN LITTELFUSE INSPECTION INSTRUCTIONS							
CP	DENOTES CP DIMENSIONS. -MINIMUM CP VALUE MUST BE WITHIN THE DIMENSIONAL LIMITATIONS SHOWN ON DRAWING AND INITIALLY LOCATED TO ALLOW FOR MAXIMUM TOOL LIFE							
NAME		DATE		<div>Littelfuse® Expertise Applied Answers Delivered</div>				
DRAWN		T. Bianchin					23 Nov 2023	
CHECKED		-					-	
		-					-	
		-					-	
FORM NO.: CVP-PE40-0013 REV A				TITLE MASTER DISCONNECT SWITCH				
FIRST ANGLE PROJECTION								
<div></div>				SIZE: DWG. NO. OUTLINE REV. A				
A2 OL-75930MKT, CHART				SHEET 1 OF 1				
DO NOT SCALE DRAWING				SCALE 1:1				