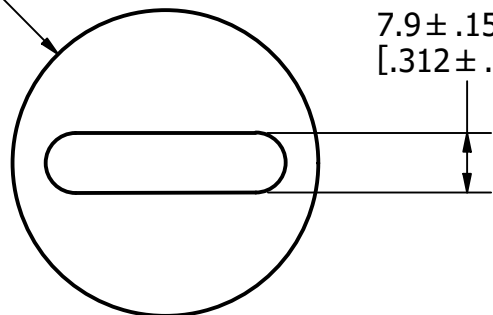


Ø40.5
[Ø1.593]

7.9 ± .15
[.312 ± .006]



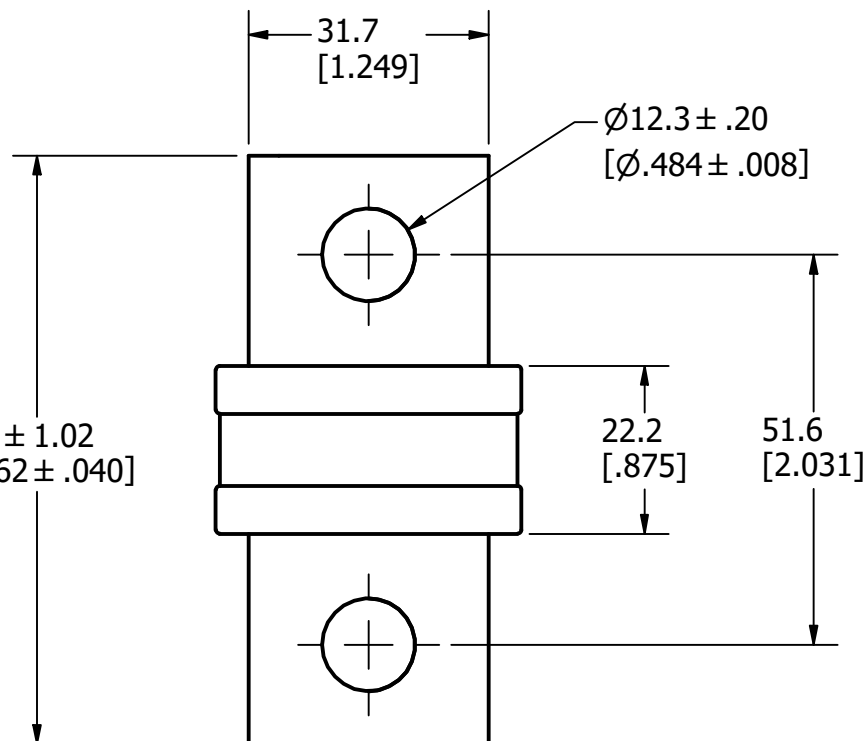
31.7
[1.249]

Ø12.3 ± .20
[Ø.484 ± .008]

77.8 ± 1.02
[3.062 ± .040]

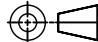

22.2
[.875]

51.6
[2.031]



REVISION		
REV	DATE	DESCRIPTION
A	8/11/22	525562GCP - RELEASE MRY

APPROXIMATE SHIPPING WEIGHT: 1 FUSE / 0.43 LBS.

1				
NO	COMPONENT NO	DESCRIPTION	QTY/M	U/M
BILL OF MATERIAL				
<S>	CRITICAL CHARACTERISTIC FOR PART SAFETY/COMPLIANCE			
●	DENOTES CRITICAL CHARACTERISTICS.			
CPK	DENOTES CPK DIMENSIONS, -MINIMUM CPK VALUE			
⬢ST	DENOTES A CHARACTERISTIC THAT PROVIDES AN INDICATION OF PROCESS PERFORMANCE. PROCEDURE FOR MEASUREMENT AND TRACKING TO BE DEFINED IN LITTELFUSE INSPECTION INSTRUCTIONS.			
CP	DENOTES CP DIMENSIONS, -MINIMUM CP VALUE MUST BE WITHIN THE DIMENSIONAL LIMITATIONS SHOWN ON DRAWING AND INITIALLY LOCATED TO ALLOW FOR MAXIMUM TOOL LIFE.			
MATL SPEC			FINISH	
DRW JMoler	DATE 8/11/2022	SCALE NTS	FINISH GOOD WT GRAMS/PIECE	
UNLESS OTHERWISE SPECIFIED, DIMENSIONS ARE IN MILLIMETERS, DIMENSIONS IN BRACKETS [] ARE INCHES DIMENSIONING AND DO NOT INCLUDE PLATING. TOLERANCING TO BE INTERPRETED IN ACCORDANCE WITH ANSI Y14.5M-1994				
3RD ANGLE PROJECTION 				
TITLE JLLN-P 450-600A OUTLINE				
 Littelfuse CHICAGO, ILLINOIS 60631		REVISION A	DRWG NO. OL-JLLN600-P	SHEET 1 OF 1