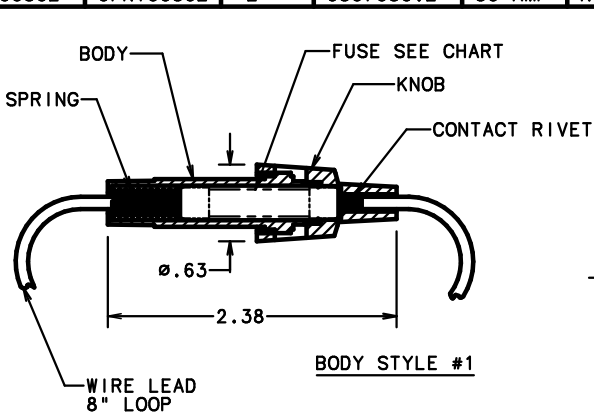
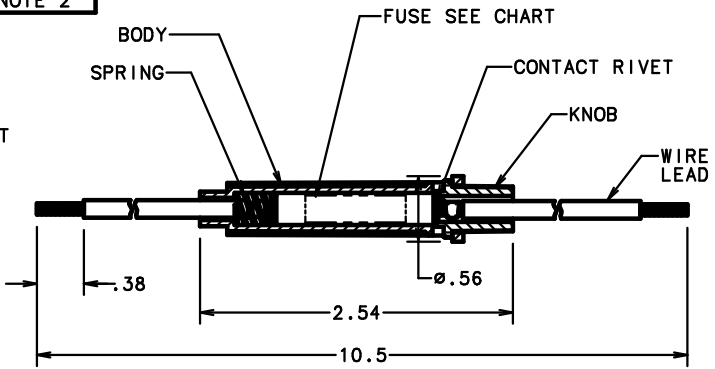


PART No.	BODY	BODY STYLE	FUSE PROVIDED	FUSE RATING	REMARKS
OFNY0001Z	OFNY0001Z	1	NONE	----	NOTE 1
OFNY0004Z	OFNY0001Z	1	0307004.Z	4 AMP	NOTE 1
OFNY0006Z	OFNY0001Z	1	0307006.Z	6 AMP	NOTE 1
OFNY00075Z	OFNY0001Z	1	0307007.5Z	7.5 AMP	NOTE 1
OFNY0009Z	OFNY0001Z	1	0307009.Z	9 AMP	NOTE 1
OFNY0014Z	OFNY0001Z	1	0307014.Z	14 AMP	NOTE 1
OFNY0020Z	OFNY0001Z	1	0307020.Z	20 AMP	NOTE 1
OFNY0030Z	OFNY0030Z	2	0307030.Z	30 AMP	NOTE 2



BODY STYLE #1



BODY STYLE #2

- NOTES:
- FOR OFNY0001:
 - MAX. RATING: 20 AMPS, 32 VOLTS AT A MAXIMUM OPERATING TEMPERATURE OF 180° F (82° C).
 - BODY MATERIAL: NYLON 6/6, BLACK
KNOB MATERIAL: NYLON 6/6, BLACK
SPRING MATERIAL: COATED STEEL
CONTACT RIVET MATERIAL: BRASS
WIRE LEAD MATERIAL: #14 GAUGE, STRANDED, BLACK
FUSEHOLDER IS SHIPPED WITH KNOB AND BODY ASSEMBLED (FUSE INSTALLED, IF REQUIRED) FORMING A LOOP.
 - FOR OFNY0030:
 - MAX. RATING: 30 AMPS, 32 VOLTS AT A MAXIMUM OPERATING TEMPERATURE OF 180° F (82° C).
 - BODY MATERIAL: NYLON, WHITE TRANSLUCENT
KNOB MATERIAL: NYLON 6/6, BLACK
SPRING MATERIAL: COATED STEEL
CONTACT RIVET MATERIAL: BRASS
WIRE LEAD MATERIAL: #12 GAUGE, STRANDED, ORANGE PVC, G.P. SAE TYPE 1
FUSEHOLDER IS SHIPPED WITH KNOB AND BODY ASSEMBLED (FUSE INSTALLED).

GENERAL NOTES:
1. TOTAL WEIGHT OF SHIPPING CARTON SHALL BE LIMITED TO 50 LBS. MAX.

NO	COMPONENT NO	DESCRIPTION	QTY/M	U/M
BILL OF MATERIAL				
MATERIAL SPEC		FINISH		
COPIES TO	DRW	DATE	SCALE	1=1
1	9	18	JMB	
2	10	19	CHK	
3	12	20	DATE	SUPER DRW
4	13	21	APPD	RAW STK WT
5	14	23		LBS/M
6	15	33	TOLERANCE UNLESS OTHERWISE SPECIFIED	
7	16	43	TWO PLACE DEC ±.01	
8	17	53	THREE PLACE DEC ±.005	
REVISION				
LTR	NO	DATE	BY	DESCRIPTION
F		3/21/03	BJJ	39728C- REVISE & REDRAWN ON NEW FORMAT 2/26/99 JMB
G				82904C - OBS. OFNY0075Z, OFNY0009Z

LifeLine Fuse
DES PLAINES, ILLINOIS 60016

FUSEHOLDER, IN LINE (FUSE OPTIONAL)

DRAWING NO. SERIES OUTLINE
OFNY0000Z

UNLESS OTHERWISE SPECIFIED, DIMENSIONS DO NOT INCLUDE PLATING.

CPK DENOTES CRITICAL CHARACTERISTICS.

MINIMUM CPK VALUE DENOTES CPK DIMENSIONS - MINIMUM CPK VALUE.

ST DENOTES A CHARACTERISTIC THAT PROVIDES AN INDICATION OF PROCESS PERFORMANCE. REFERENCE PROCEDURE FOR MEASUREMENT OF THIS CHARACTERISTIC IS LOCATED IN THE INSTRUCTIONS.

CPK DENOTES CP DIMENSIONS - MINIMUM CP VALUE.

MINIMUM CP VALUE DENOTES CP DIMENSIONAL LIMITATIONS TO WHICH THIS DIMENSION IS UNUSUALLY LOCATED TO FOR MAXIMUM TOOL LIFE.

UNCONTROLLED DOCUMENT