

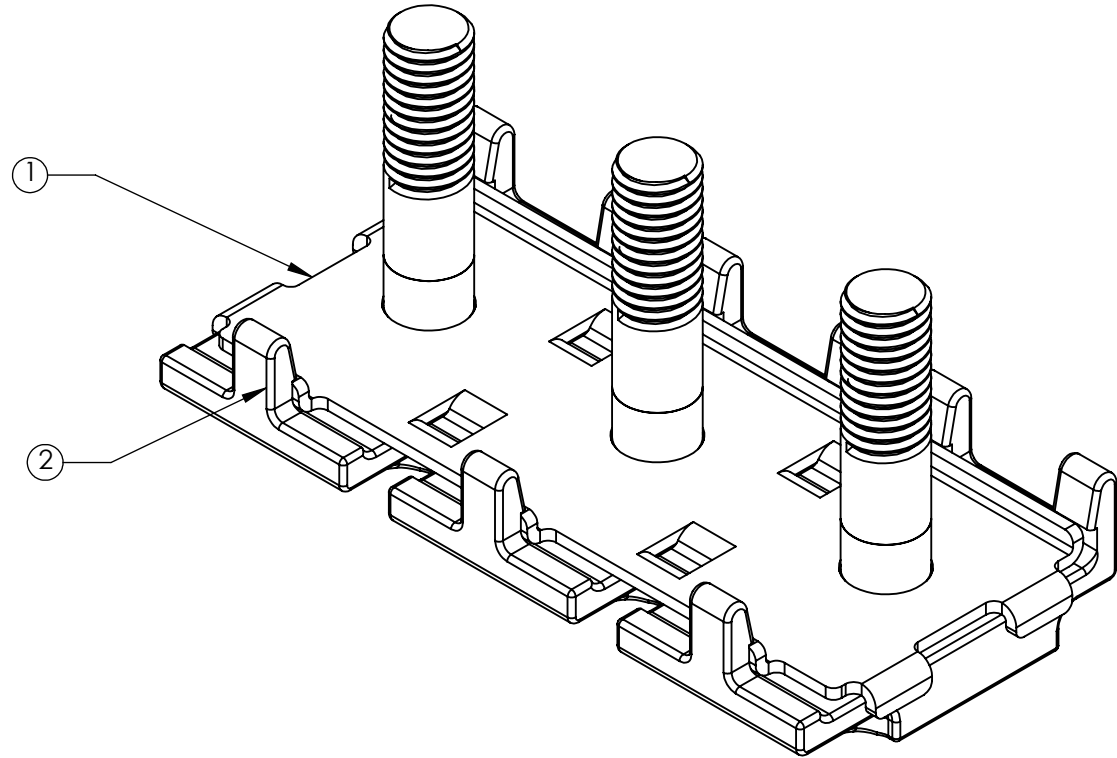
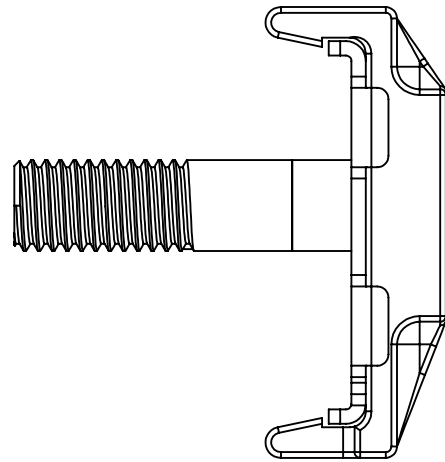
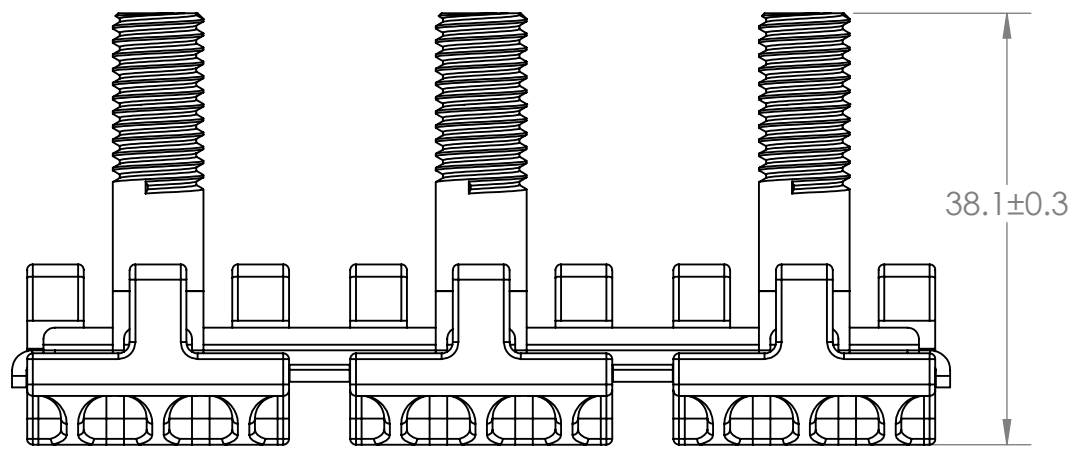
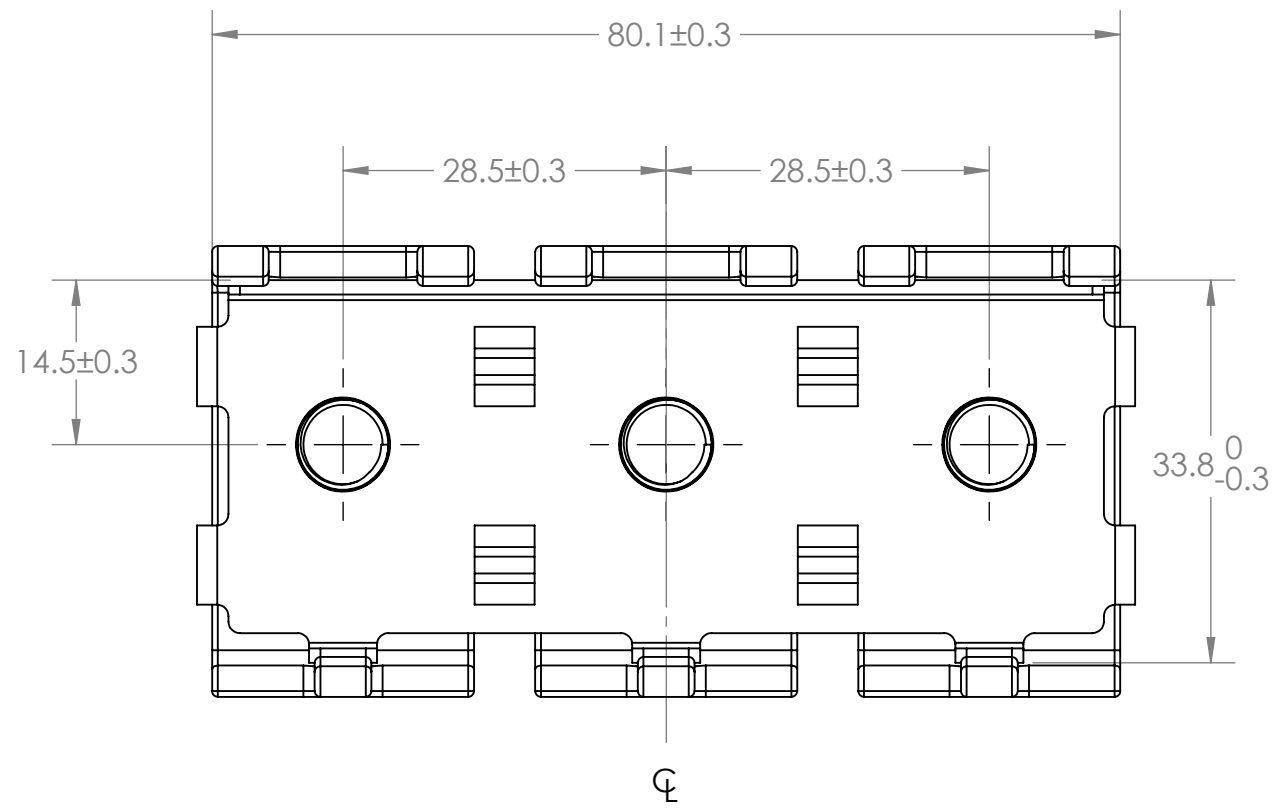
REVISIONS				
ZONE	REV.	DESCRIPTION	DATE	APPROVED
	A	PER EC#514694: INITIAL RELEASE	6/22/2015	J. LIU

D

C

B

A



BOM			
ITEM	DESCRIPTION	MATERIAL	QTY
1	FUSE HOLDER TERMINAL	ALLOY C19400 (ASTM #B465) 100% TIN OVER NICKEL	1
2	FUSE HOLDER - M8		3

DIMENSIONS ARE IN MM.  
DIMENSIONS AND TOLERANCES ARE DEFINED ACCORDING TO ANSI / ASME Y14.5M-1994  
  
THIS DRAWING AND THE INFORMATION CONTAINED WITHIN IT ARE CONFIDENTIAL AND MAY NOT BE COPIED OR DISCLOSED WITHOUT THE WRITTEN PERMISSION OF LITTELFUSE.

DRAWN	J. Liu	DATE	6/22/2015
CHECKED	-		-
-	-		-
-	-		-
-	-		-

THIRD ANGLE PROJECTION

Exporting Applied | Answers Delivered  
805 W ORCHARD DR., STE 6, BELLINGHAM, WA 98226  
Phone (360)738-9010 Fax (360)738-0372

**BUS BAR AND STUD ASSM-ZCASE  
HOLDER 3WAY**

SIZE **C** DWG. NO. **882-853** REV. **A**  
SCALE 1.5:1 SHEET 1 OF 1

D

C

B

A