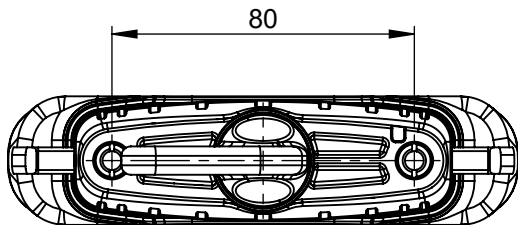
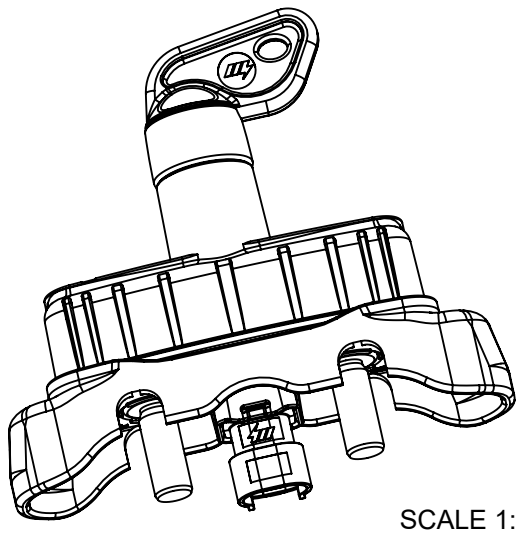
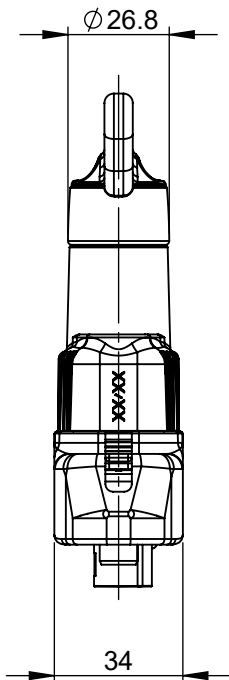
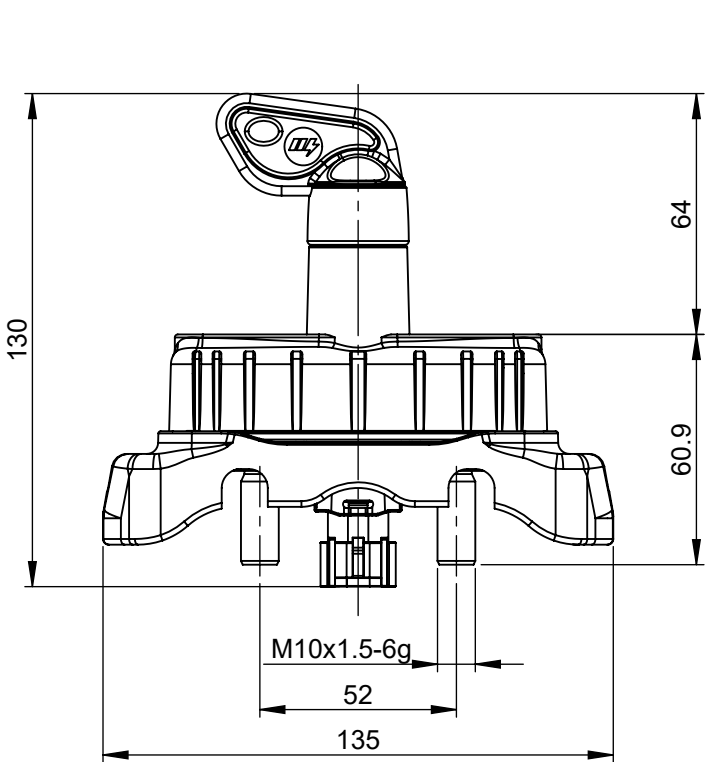
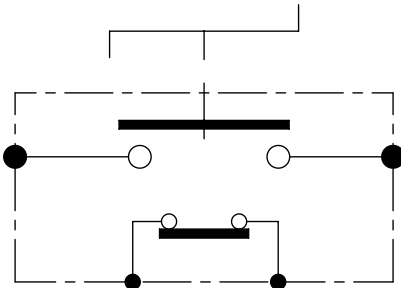


REVISIONS					
REV.	DESCRIPTION	DATE	GCF / ECR	DESIGNED	APPROVED
A	Initial release	10-Jun-22		L.Dal Molin	M.Tinto

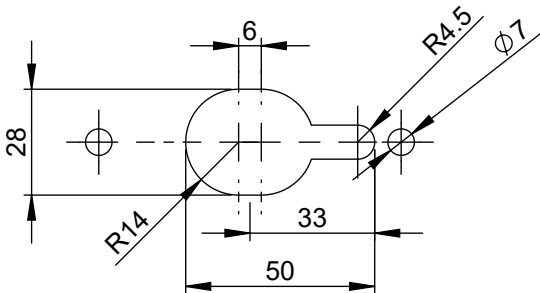




- CHARACTERISTICS
- Rated tension: 28.5V
 - Working tension range: from 8V to 34V
 - Maximum continuos current in the main contact: 250A at 23°C
 - Maximum current of short duration in the main contact: 1500A for 5sec at 23°C
 - Number of mechanical and electrical cycles: 20.000
 - Max key locking torque recommended: 7Nm
 - Screws recommended to fix M6 with locking torque: 10±1.5 Nm
 - Screwing torque on main contacts M10: 18±1 Nm

Electrical diagram



Fixing holes



DIMENSIONS AND TOLERANCES IN MILLIMETERS, DEFINED ACCORDING TO ISO 1101-2017.								
linear dimensions								
0,5 3	>3 6	>6 30	>30 120	>120 400	>400 1000	>1000 2000		
±0,2	±0,3	±0,5	±0,8	±1,2	±2	±3		
angle (for range of lengths)								
up to 10		>10 50	>50 120		>120 400			
±1°30'		±1°	±0°30'		±0°15'			
	FIT/ FUNCTION CRITICAL CHARACTERISTICS SYMBOL							
<S>	SAFETY/ COMPLIANCE CRITICAL CHARACTERISTICS SYMBOL							
CPK	DENOTES CPK DIMENSIONS MINIMUM CPK VALUE							
	DENOTES A CHARACTERISTIC THAT PROVIDES AN INDICATION OF PROCESS PERFORMANCE.PROCEDURE FOR MEASUREMENTAND TRACKINGTO BE DEFINED IN LITTELFUSE INSPECTION INSTRUCTIONS							
CP	DENOTES CP DIMENSIONS, -MINIMUM CP VALUE MUST BE WITHIN THE DIMENSIONAL LIMITATIONS SHOWN ON DRAWING AND INITIALLY LOCATED TO ALLOW FOR MAXIMUM TOOL LIFE							
NAME		DATE		 Littelfuse® Expertise Applied Answers Delivered				
DRAWN		L. Dal Molin					10-Jun-22	
CHECKED		-					-	
		-					-	
FORM NO: CVP-PE40-0013 REV A				TITLE				
FIRST ANGLE PROJECTION				IGC/100-D-V				
				SIZE: A3	DWG. NO.	OUTLINE		
DO NOT SCALE DRAWING				SCALE 1:2	OL-08080560	REV. A		
				SHEET 1 OF 1				