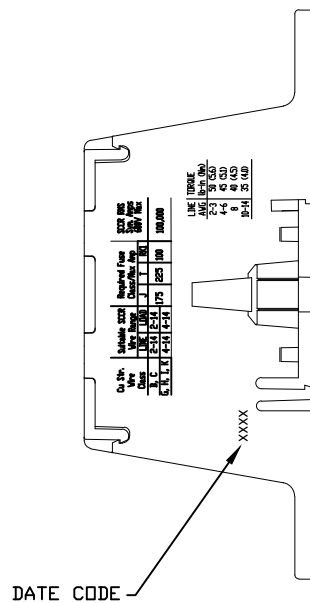
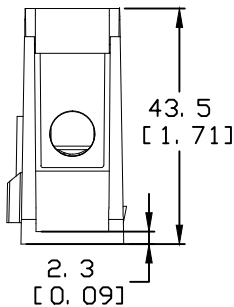
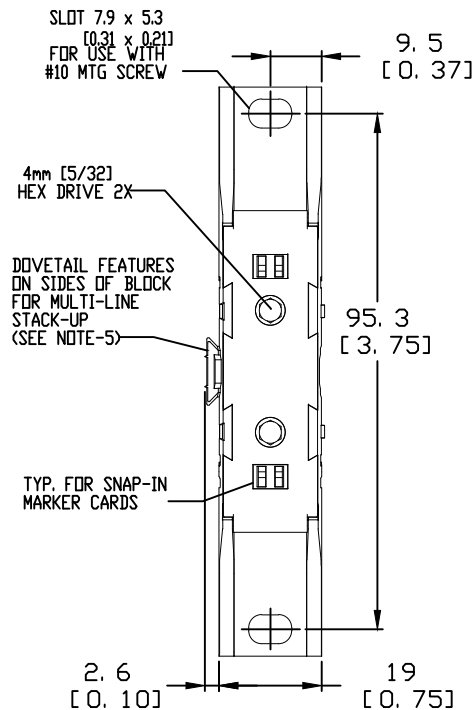
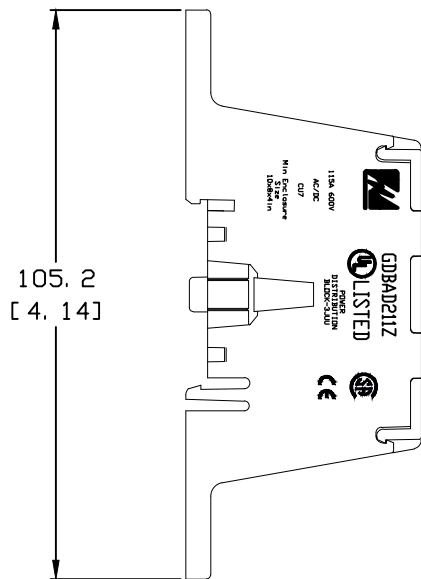


PART NUMBER

GDBAD211Z



REVISION			
REV	DATE	DESCRIPTION	
A	4/22/16	515747GCP - RELEASE PER EM2806 MRY	
B	1/30/17	516960ECP/D - UPDATE SIDE PRINTING MRY	

NOTES:

1. AGENCY INFORMATION:
UL FILE NO. E482231
CSA FILE NO. 700111
2. MATERIALS:
INSULATOR-HIGH IMPACT THERMOPLASTIC,
TEMP RATING 125°C (257°F)
CONNECTOR-ALUMINUM
3. TERMINATION:
LINE: 2-14 AWG
LOAD: 2-14 AWG
WIRE COMBINATIONS PER UL FILE
4. RATINGS:
600V
MAXIMUM AMP PER POLE-115A
BASED ON NEC WIRE RATING CODE, 75°C WIRE

PROVIDES SPACINGS FOR USE IN FEEDER CIRCUITS
AT 251-600V PER UL508A
5. FOR DIMENSIONS OF MULTILINE STACK-UPS, ADD 19.05 [0.75] TO OVERALL WIDTH, CENTERLINE SPACING OF 19.05 [0.75] POLE TO POLE.
6. TORQUE:
LINE/LOAD: 2-3 AWG 50 IN-LB
4-6 AWG 45 IN-LB
8 AWG 40 IN-LB
10-14 AWG 35 IN-LB

TOLERANCE (UNLESS OTHERWISE SPECIFIED):
1 PLACE ± 2.5mm [0.1]
2 PLACE ± 0.76mm [0.03]
3 PLACE ± 0.381mm [0.015]

●	DENOTES CRITICAL CHARACTERISTICS.		
CPK	DENOTES CPK DIMENSIONS, -MINIMUM CPK VALUE		
ST	DENOTES A CHARACTERISTIC THAT PROVIDES AN INDICATION OF PROCESS PERFORMANCE. PROCEDURE FOR MEASUREMENT AND TRACKING TO BE DEFINED IN LITTELFUSE INSPECTION INSTRUCTIONS.		
CP	DENOTES CP DIMENSIONS, -MINIMUM CP VALUE MUST BE WITHIN THE DIMENSIONAL LIMITATIONS SHOWN ON DRAWING AND INITIALLY LOCATED TO ALLOW FOR MAXIMUM TOOL LIFE.		
MATL SPEC		FINISH	
DRW myork	DATE 1/21/2016	SCALE NTS	FINISH GOOD WT GRAMS/PIECE
UNLESS OTHERWISE SPECIFIED, DIMENSIONS ARE IN MILLIMETERS, DIMENSIONS IN BRACKETS [] ARE INCHES DIMENSIONING AND DO NOT INCLUDE PLATING. TOLERANCING TO BE INTERPRETED IN ACCORDANCE WITH ANSI Y14.5M-1994			
3RD ANGLE PROJECTION			
TITLE 600V DISTRIBUTION BLOCK 115A OUTLINE			
Littelfuse® CHICAGO, ILLINOIS 60631		REVISION B	DRWG NO. OL-GDBAD21 SHEET 1 OF 1