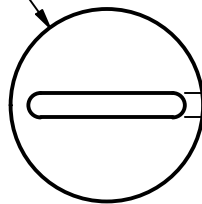
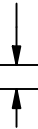


Ø50.80
[Ø2.000]

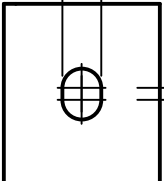
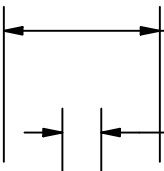


6.35 ± 0.08
[0.250 ± 0.003]



41.28 ± 0.89
[1.625 ± 0.035]

10.32 ± 0.13
[0.406 ± 0.005]

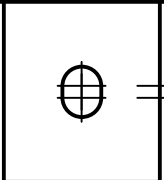


136.46
[5.373]

130.18
[5.125]

85.73 ± 0.76
[3.375 ± 0.030]

180.98 ± 2.29
[7.125 ± 0.090]



REVISION		
REV	DATE	DESCRIPTION
A	6/21/22	525355GCP - RELEASE MRY

APPROX. SHIPPING WEIGHT: 1 FUSE = 1.7 LB

1	NO	COMPONENT NO	DESCRIPTION	QTY/M	U/M
---	----	--------------	-------------	-------	-----

BILL OF MATERIAL

<S>	CRITICAL CHARACTERISTIC FOR PART SAFETY/COMPLIANCE
●	DENOTES CRITICAL CHARACTERISTICS.
CPK	DENOTES CPK DIMENSIONS, -MINIMUM CPK VALUE
⊠	DENOTES A CHARACTERISTIC THAT PROVIDES AN INDICATION OF PROCESS PERFORMANCE. PROCEDURE FOR MEASUREMENT AND TRACKING TO BE DEFINED IN LITTELFUSE INSPECTION INSTRUCTIONS.
CP	DENOTES CP DIMENSIONS, -MINIMUM CP VALUE MUST BE WITHIN THE DIMENSIONAL LIMITATIONS SHOWN ON DRAWING AND INITIALLY LOCATED TO ALLOW FOR MAXIMUM TOOL LIFE.

A

MATL SPEC	FINISH
-----------	--------

DRW Jeff Moler	DATE 6/16/2022	SCALE NTS	FINISH GOOD WT GRAMS/PIECE
-------------------	-------------------	--------------	-------------------------------

UNLESS OTHERWISE SPECIFIED, DIMENSIONS ARE IN MILLIMETERS, DIMENSIONS IN BRACKETS [] ARE INCHES DIMENSIONING AND DO NOT INCLUDE PLATING. TOLERANCING TO BE INTERPRETED IN ACCORDANCE WITH ANSI Y14.5M-1994

3RD ANGLE PROJECTION	
-------------------------	--

TITLE JLS 225-400A OUTLINE

Littelfuse CHICAGO, ILLINOIS 60631	REVISION A	DRWG NO. OL-0JLS400	SHEET 1 OF 1
----------------------------------------------	----------------------	-------------------------------	--------------