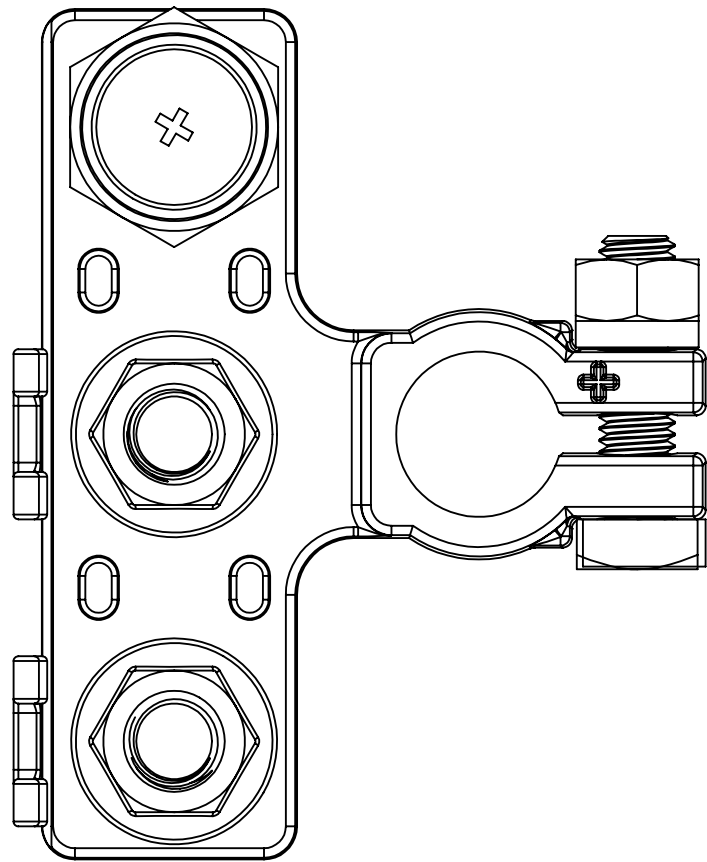
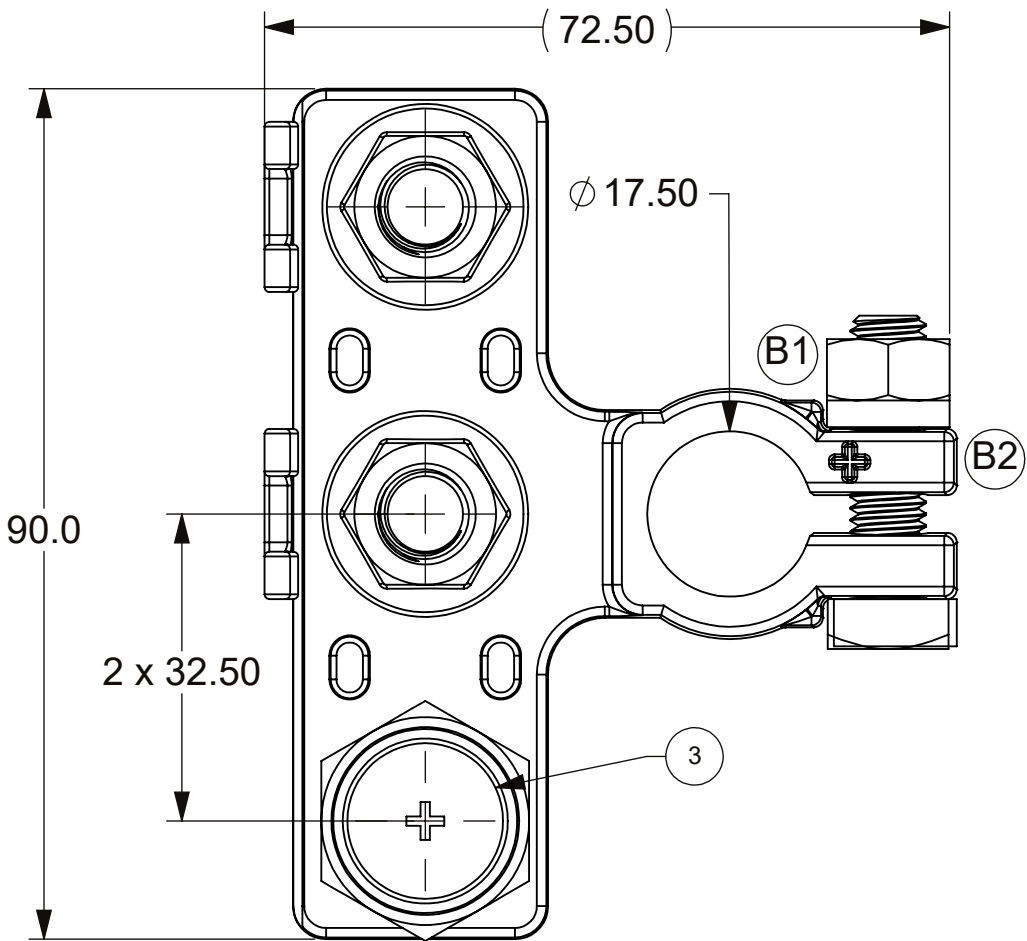


NOTES

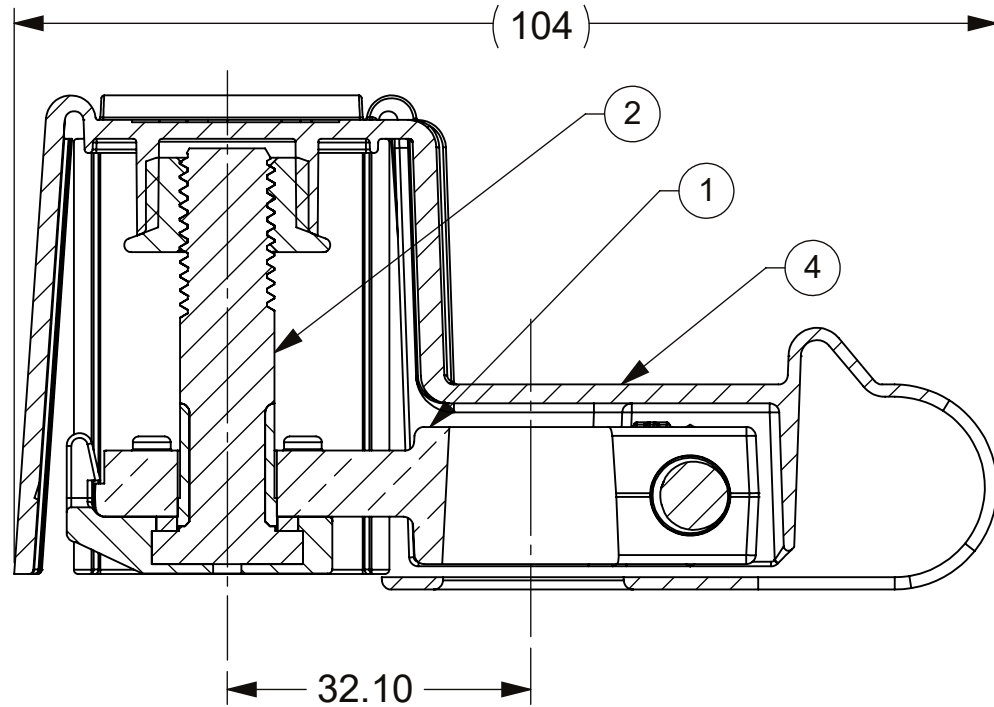
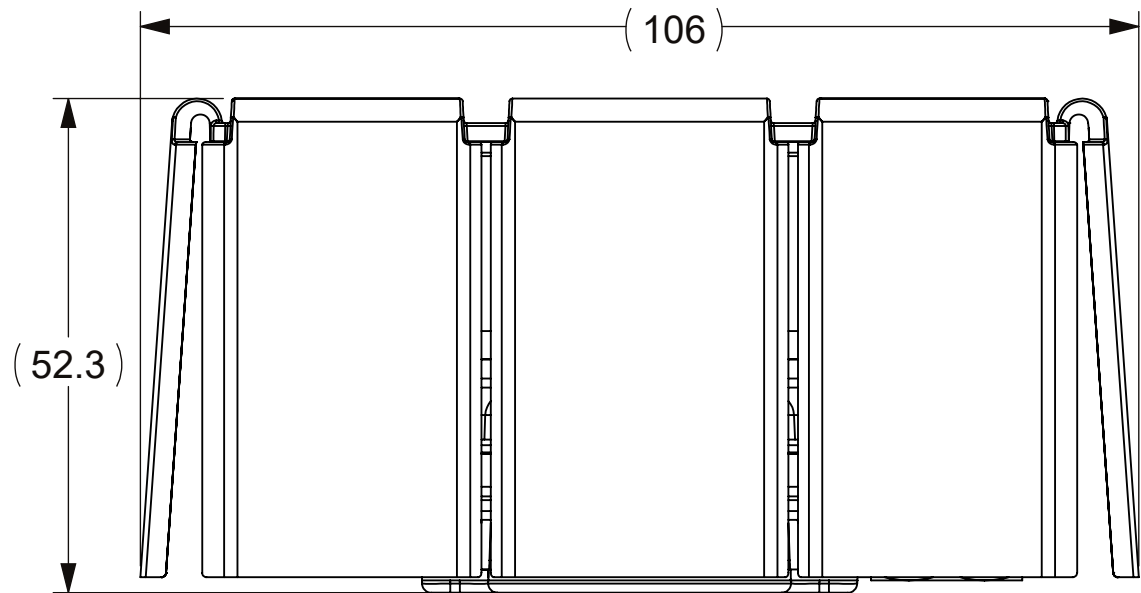
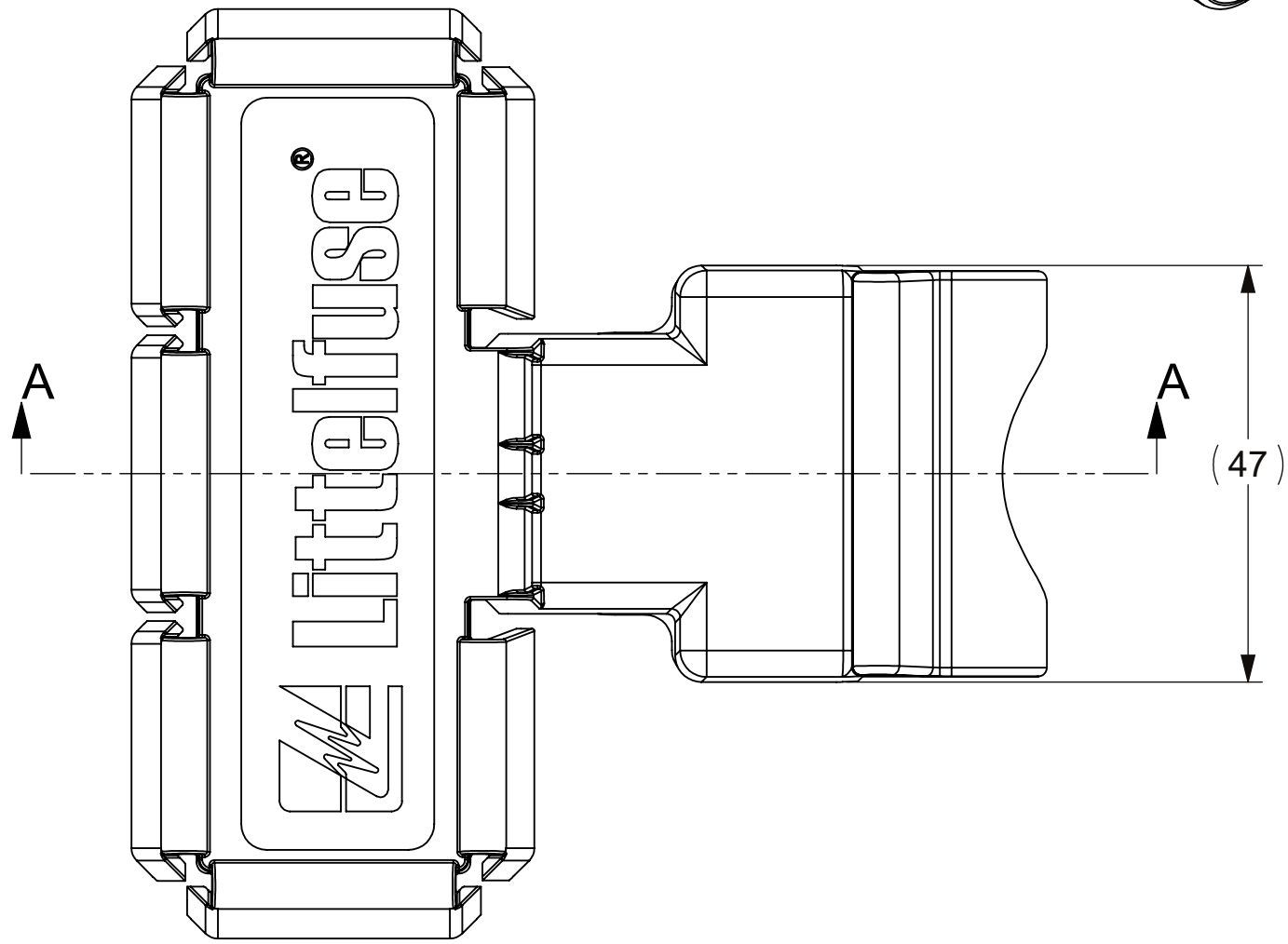
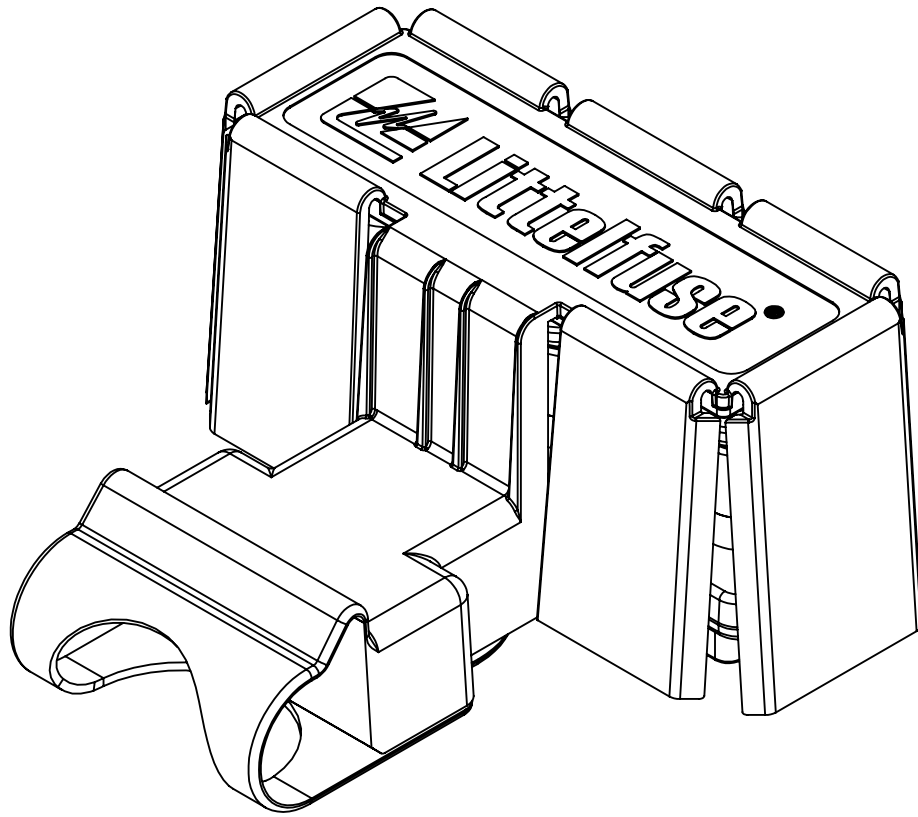
- MATERIAL:  
BASE: COPPER ALLOY PLATED WITH TIN OVER NICKEL  
BOLTS AND NUTS: 304 STAINLESS STEEL  
COVER: TPV; UL94, V0 RATED
- BMZS MUST BE USED WITH LITTELFUSE SUPPLIED  
M10 INSULATED BOLT ONLY (908-082)  
M10 BOLT TORQUE: 16±2 N·m  
M8 SHOULDER NUT TORQUE: 12±1 N·m  
MAXIMUM CONTINUOUS CURRENT: 325 A
- VOLTAGE RATING: 80 V
- OPERATING TEMPERATURE: -40°C TO 105°C
- STORAGE TEMPERATURE: -50°C TO 125°C



BATTERY POST ON THE RIGHT



BATTERY POST ON THE LEFT





SECTION A-A

REVISIONS				
ZONE	REV.	DESCRIPTION	DATE	APPROVED
	A	INITIAL RELEASE, GCF#524040	10/15/2021	R. OLSZEWSKI
	B	ECO-100086 1. NEW ANTIROTATIONAL FEATURE; 2. NEW PLUS SIGN; CHANGED NAME FROM BMZF TO BMZS B.CARR	2/23/2022	R. OLSZEWSKI

ITEM NO.	PART NUMBER	DESCRIPTION	QTY.
1	890011640	3 Position Base	1
2	908-082	M10 Insulated Stud	2
3	903-219	Female Battery Post	1
4	901-730	Cover, 3 Position BMZS	1

DIMENSIONS ARE SHOWN IN MILLIMETERS. DIMENSIONS AND TOLERANCES ARE DEFINED ACCORDING TO ANSI/ASME Y14.5-1994.	
●	FTI/ FUNCTION CRITICAL CHARACTERISTICS
<S>	SAFETY/ COMPLIANCE CRITICAL CHARACTERISTICS SYMBOL
CPK	DENOTES CPK DIMENSIONS MINIMUM CPK VALUE
(ST)	DENOTES A CHARACTERISTIC THAT PROVIDES AN INDICATION OF PROCESS PERFORMANCE. PROCEDURE FOR MEASUREMENT AND TRACKING TO BE DEFINED IN LITTELFUSE INSPECTION INSTRUCTIONS
CP	DENOTES CP DIMENSIONS. -MINIMUM CP VALUE MUST BE WITHIN THE DIMENSIONAL LIMITATIONS SHOWN ON DRAWING AND INITIALLY LOCATED TO ALLOW FOR MAXIMUM TOOL LIFE

NAME		DATE	 <b>Littelfuse®</b> Expertise Applied   Answers Delivered	
DRAWN		B.CARR		
CHECKED		S.CASTILLO	10/15/2021	
-		-		
-		-		
FORM NO. CVP-PE40-0005 REV B			TITLE BMZS STUDDED 2 POS KIT BULK	
THIRD ANGLE PROJECTION				
			SIZE C DWG. NO. OUTLINE OL-FHZ00862 REV. B	
DO NOT SCALE DRAWING				
SCALE 1:25:1			SHEET 1 OF 1	