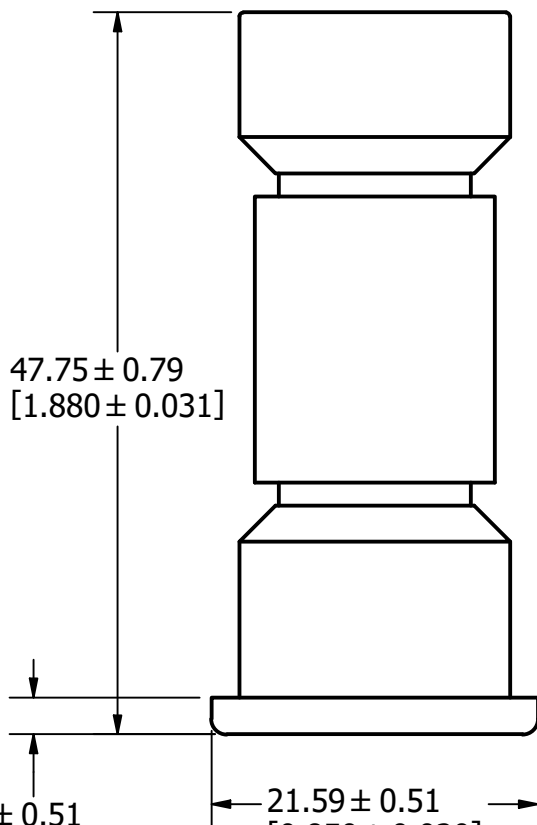


$\varnothing 17.91 \pm 0.13$   
 $[\varnothing 0.705 \pm 0.005]$




$47.75 \pm 0.79$   
 $[1.880 \pm 0.031]$

$2.44 \pm 0.51$   
 $[0.096 \pm 0.020]$

$21.59 \pm 0.51$   
 $[0.850 \pm 0.020]$

| REVISION |         |                         |
|----------|---------|-------------------------|
| REV      | DATE    | DESCRIPTION             |
| A        | 6/21/22 | 525330GCP - RELEASE MRY |

APPROX. SHIPPING WEIGHT: 10 FUSES = 0.60 LB

|   |  |               |                               |              |
|---|--|---------------|-------------------------------|--------------|
| 1   |  |               |                               |              |
| NO  | COMPONENT NO   | DESCRIPTION   |                               | QTY/M<br>U/M |
| BILL OF MATERIAL  |  |               |                               |              |
| <S>   | CRITICAL CHARACTERISTIC FOR PART SAFETY/COMPLIANCE   |               |                               |              |
| ●   | DENOTES CRITICAL CHARACTERISTICS.  |               |                               |              |
| CPK   | DENOTES CPK DIMENSIONS, -MINIMUM CPK VALUE   |               |                               |              |
| Ⓢ   | DENOTES A CHARACTERISTIC THAT PROVIDES AN INDICATION OF PROCESS PERFORMANCE. PROCEDURE FOR MEASUREMENT AND TRACKING TO BE DEFINED IN LITTELFUSE INSPECTION INSTRUCTIONS. |               |                               |              |
| CP  | DENOTES CP DIMENSIONS, -MINIMUM CP VALUE MUST BE WITHIN THE DIMENSIONAL LIMITATIONS SHOWN ON DRAWING AND INITIALLY LOCATED TO ALLOW FOR MAXIMUM TOOL LIFE.               |               |                               |              |
| MATL SPEC   |  | FINISH        |                               |              |
| DRW<br>Jeff Moler   | DATE<br>6/14/2022  | SCALE<br>NTS  | FINISH GOOD WT<br>GRAMS/PIECE |              |
| UNLESS OTHERWISE SPECIFIED, DIMENSIONS ARE IN MILLIMETERS, DIMENSIONS IN BRACKETS [ ] ARE INCHES DIMENSIONING AND DO NOT INCLUDE PLATING. TOLERANCING TO BE INTERPRETED IN ACCORDANCE WITH ANSI Y14.5M-1994 |  |               |                               |              |
| 3RD ANGLE<br>PROJECTION   |  |               |                               |              |
| TITLE<br>CCMR 35-60A OUTLINE  |  |               |                               |              |
|  <b>Littelfuse®</b><br>CHICAGO, ILLINOIS 60631   |  | REVISION<br>A | DRWG NO.<br>OL-CCMR060        | SHEET 1 OF 1 |