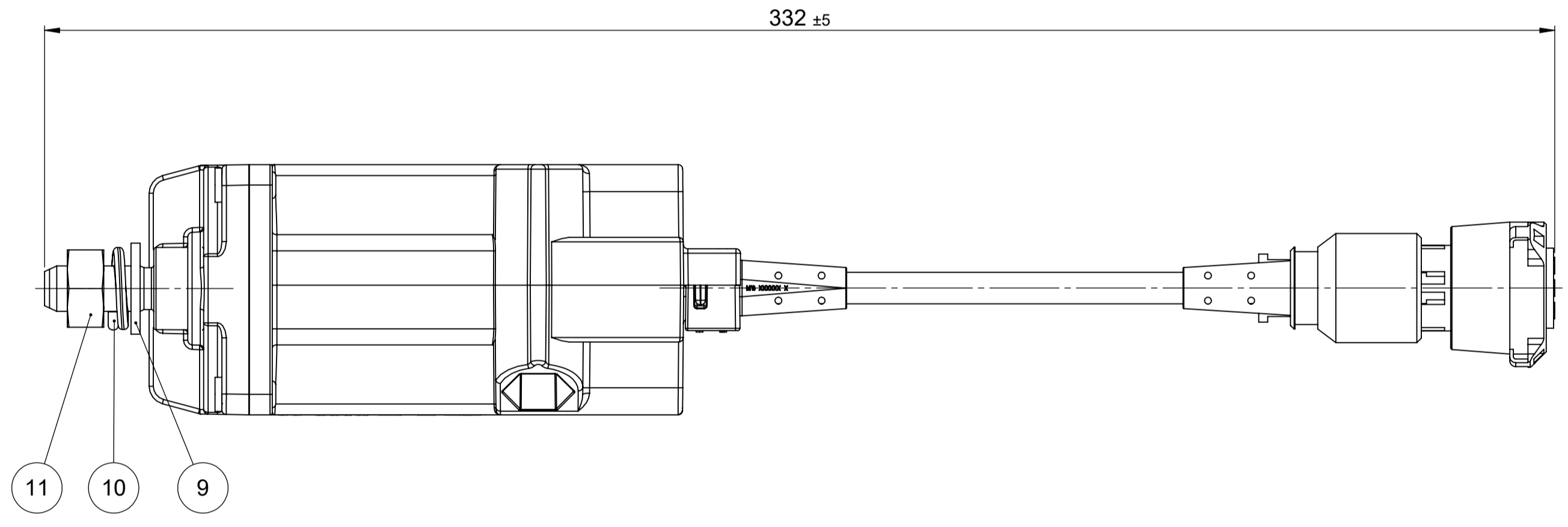
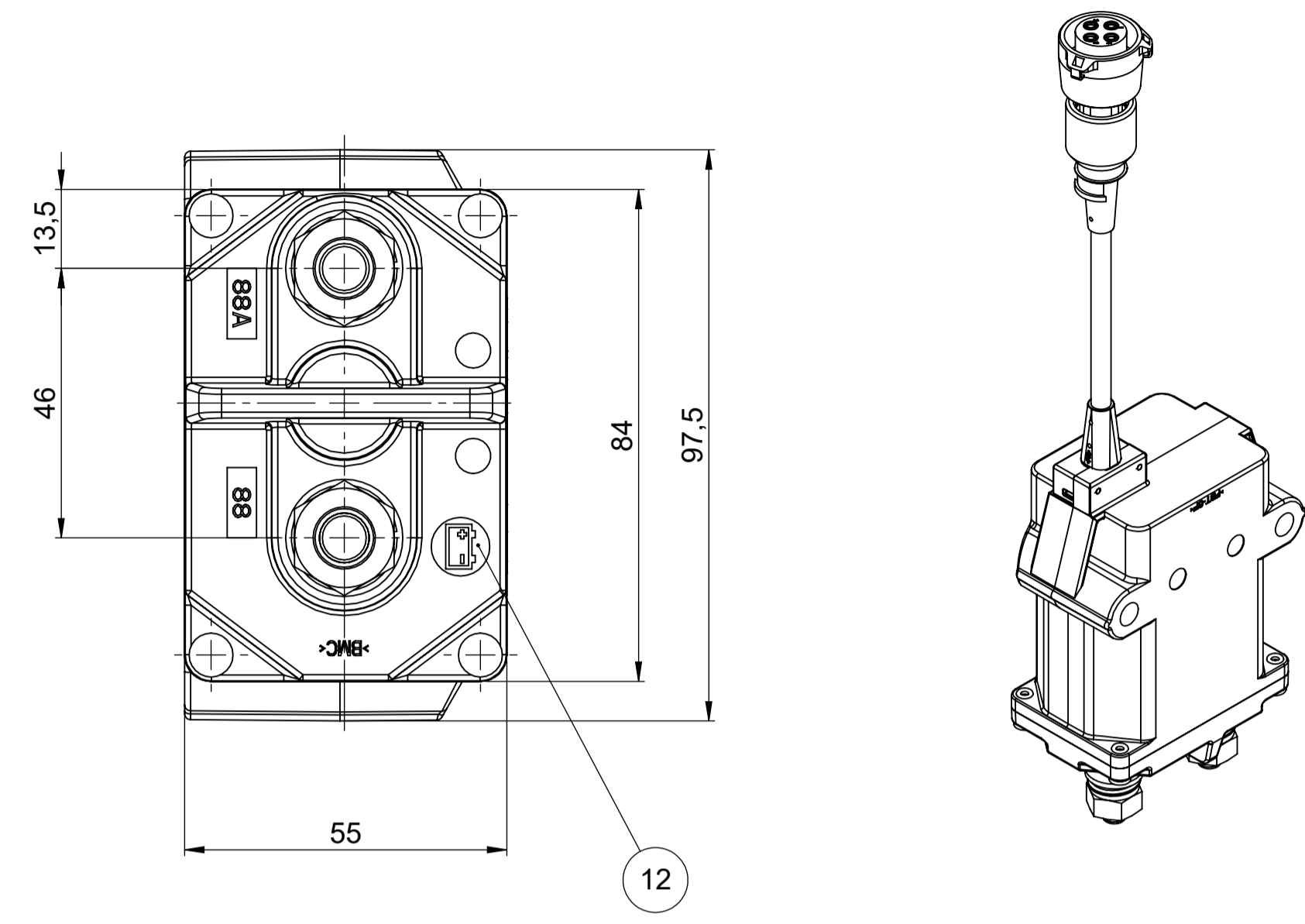
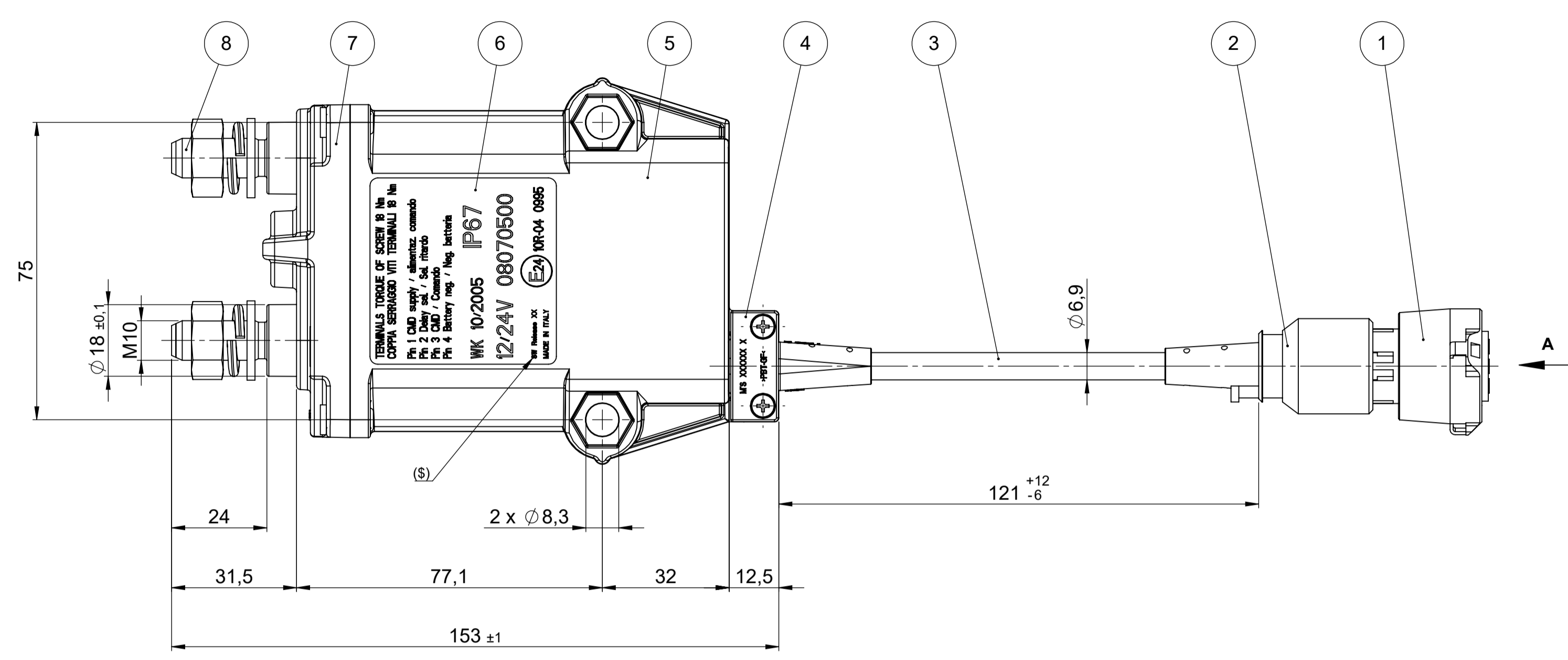


REV.	DESCRIPTION	REVISIONS		
		DATE	DESIGNED	APPROVED
A	FIRST ISSUE OF OUTLINE DRAWING	09-June-20	Gasparini	Tinto



**LEGEND**

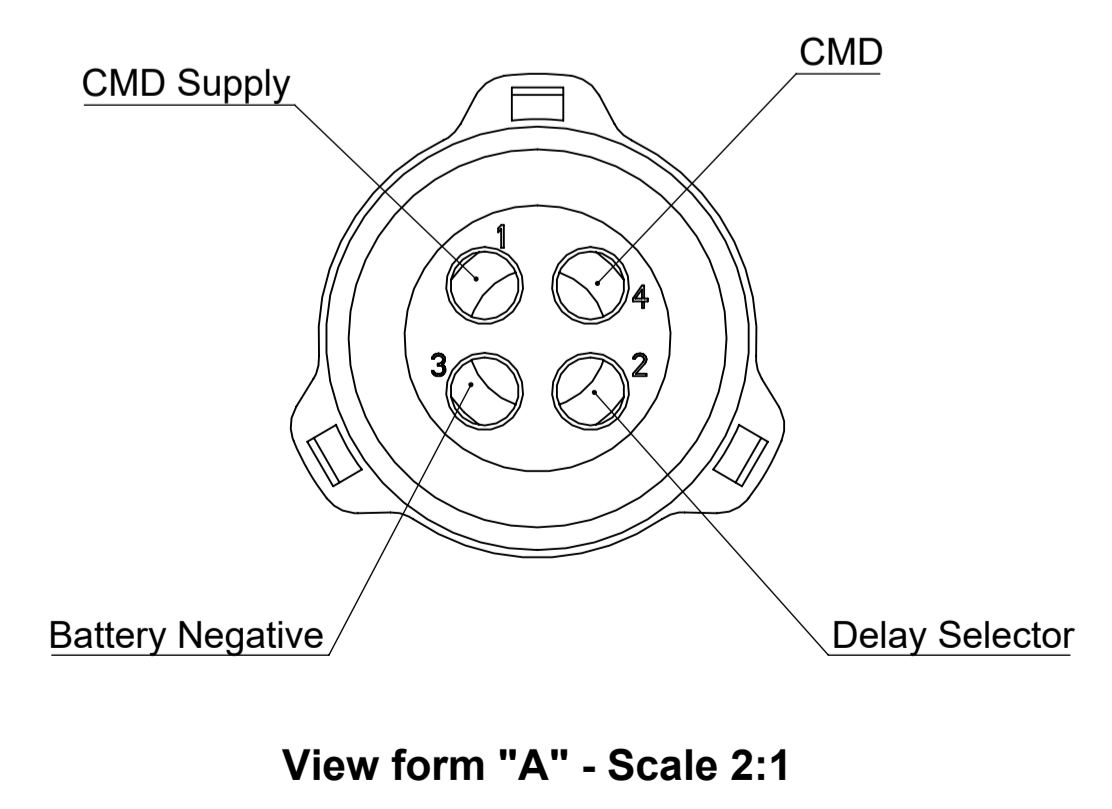
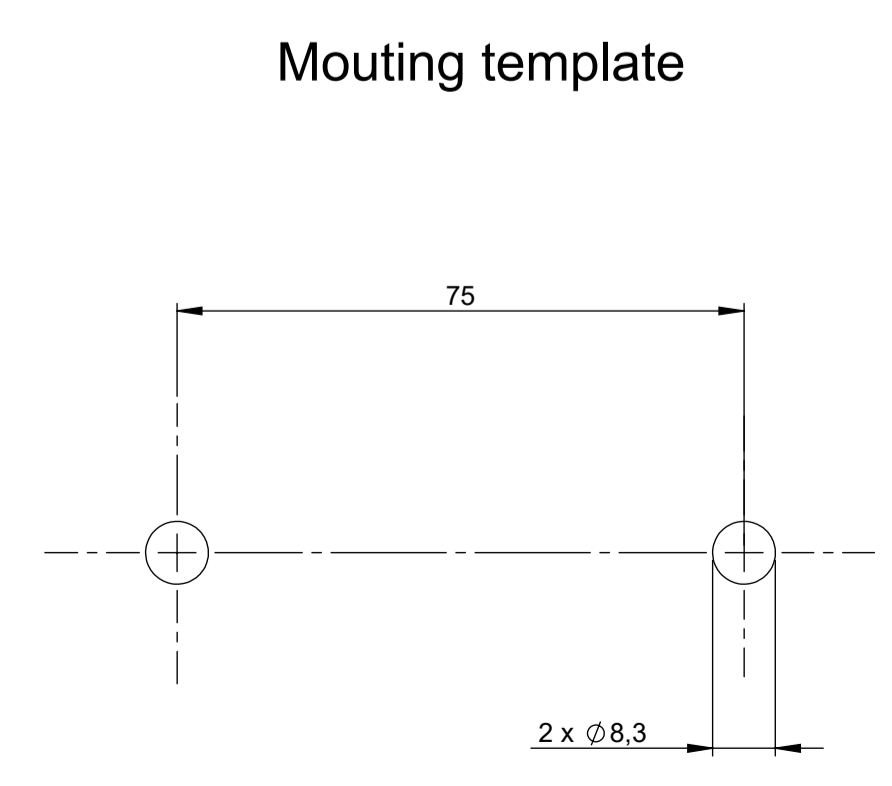
- 1) Plug connector 4 ways DIN 72585-1 ITT CANNON 121583-00 in thermoplastic PBT colour black
- 2) Protection for ITT CANNON connector 058-8578-100 in thermoplastic PBT colour black
- 3) 4 ways wiring 4x1 mm<sup>2</sup> in thermoplastic PVC colour black
- 4) Cable clamp in thermoplastic PBT colour black
- 5) Box in thermoplastic PBT colour black
- 6) Indestructible adhesive label with manufacturing week and year, P/N and pin-out connections
- 7) Studs holder cover in BMC colour black
- 8) M10 power studs in silver plated copper
- 9) Plane washer in stainless steel
- 10) Spring washer in stainless steel
- 11) M10 nut in stainless steel
- 12) Battery pole red label

**FEATURES**

- Max continuous current: 250A
- Number of electrical and mechanical cycles: 45.000
- ( $\$$ ): Software Revision

**NOTES**

- Supplying state: main bridge open
- Components ref.9,10 and 11 are supplied in the kit
- Locking torque nuts M10:18±1Nm
- Fix the device to the structure by means of M8 screws with locking torque 10±2Nm



View from "A" - Scale 2:1

DIMENSIONS AND TOLERANCES IN MILLIMETERS, DEFINED ACCORDING TO ISO 1101:2017.	
linear dimensions	
0,5	>3
3	>6
6	>30
30	>120
120	>400
400	>1000
1000	>2000
±0,2	±0,3
±0,5	±0,8
±1,2	±2
±3	±5
angle (for range of lengths)	
up to 10	>10
10	>50
50	>120
120	>400
400	>1000
±1°30'	±1°
±0°30'	±0°15'
<p>● FIT/FUNCTION CRITICAL CHARACTERISTICS SYMBOL</p> <p>&lt;S&gt; SAFETY/ COMPLIANCE CRITICAL CHARACTERISTICS SYMBOL</p> <p>CPK DENOTES CPK DIMENSIONS MINIMUM CPK VALUE</p> <p>(ST) DENOTES A CHARACTERISTIC THAT PROVIDES AN INDICATION OF PROCESS PERFORMANCE PROCEDURE FOR MEASUREMENT AND TRACKING TO BE DEFINED IN LITTELFUSE INSPECTION INSTRUCTIONS</p> <p>CP DENOTES CP DIMENSIONS. MINIMUM CP VALUE MUST BE WITHIN THE DIMENSIONAL LIMITATIONS SHOWN ON DRAWING AND INITIALLY LOCATED TO ALLOW FOR MAXIMUM TOOL LIFE</p>	
NAME	DATE
DRAWN L. De Masi	09/05/2019
CHECKED	
<p>Expertise Applied Answers Delivered</p>	
FORM NO. COP-RES-0013 REV.1	TITLE
FIRST ANGLE PROJECTION	General Electrical 12/24V Main Switch TGC/RME-M53 (+)
SIZE: A1	SCALE: 1:1
DO NOT SCALE DRAWING	SCALE: 1:1
	SHEET 1 OF 1

SAP drawing number:  
Material and treatments: