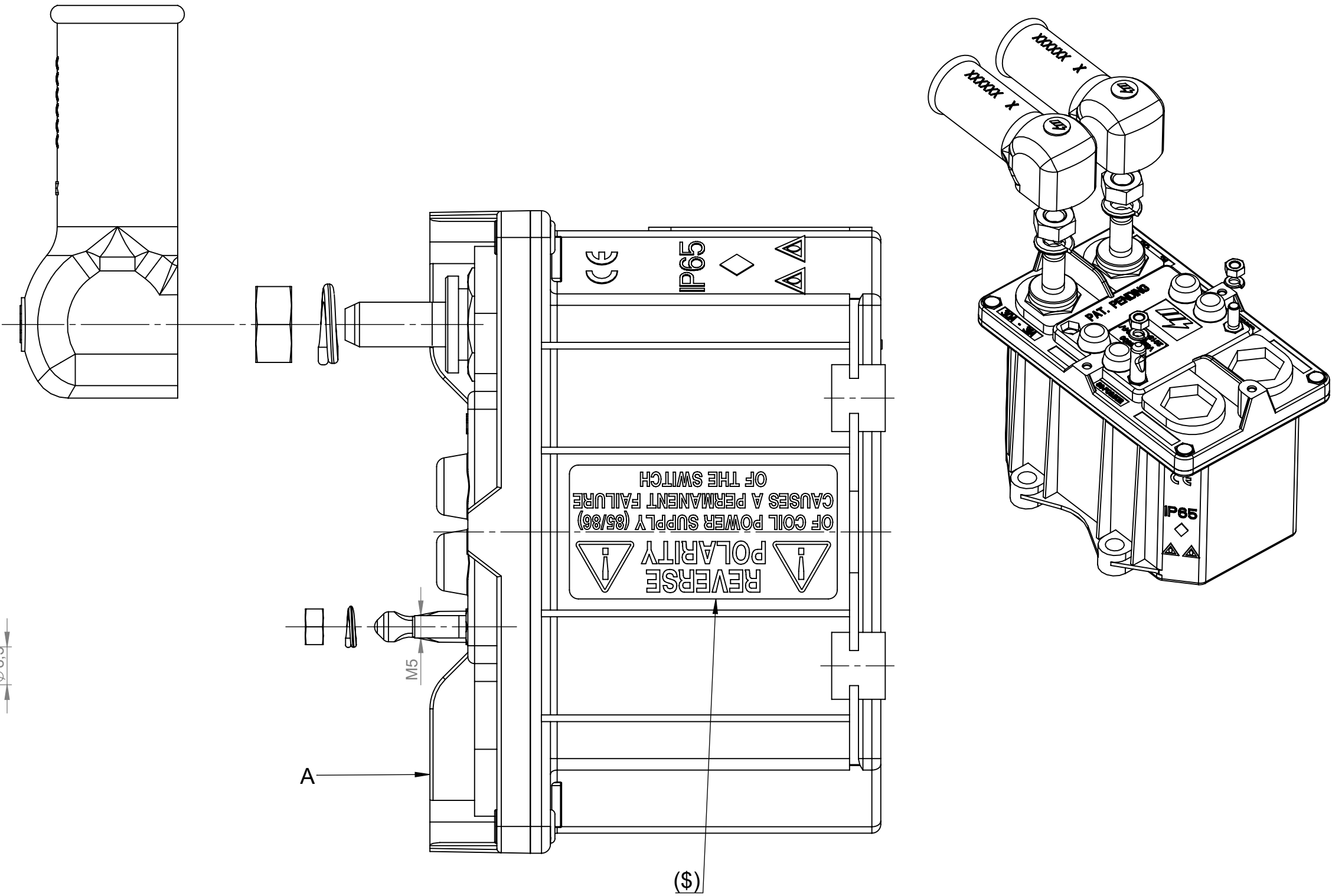
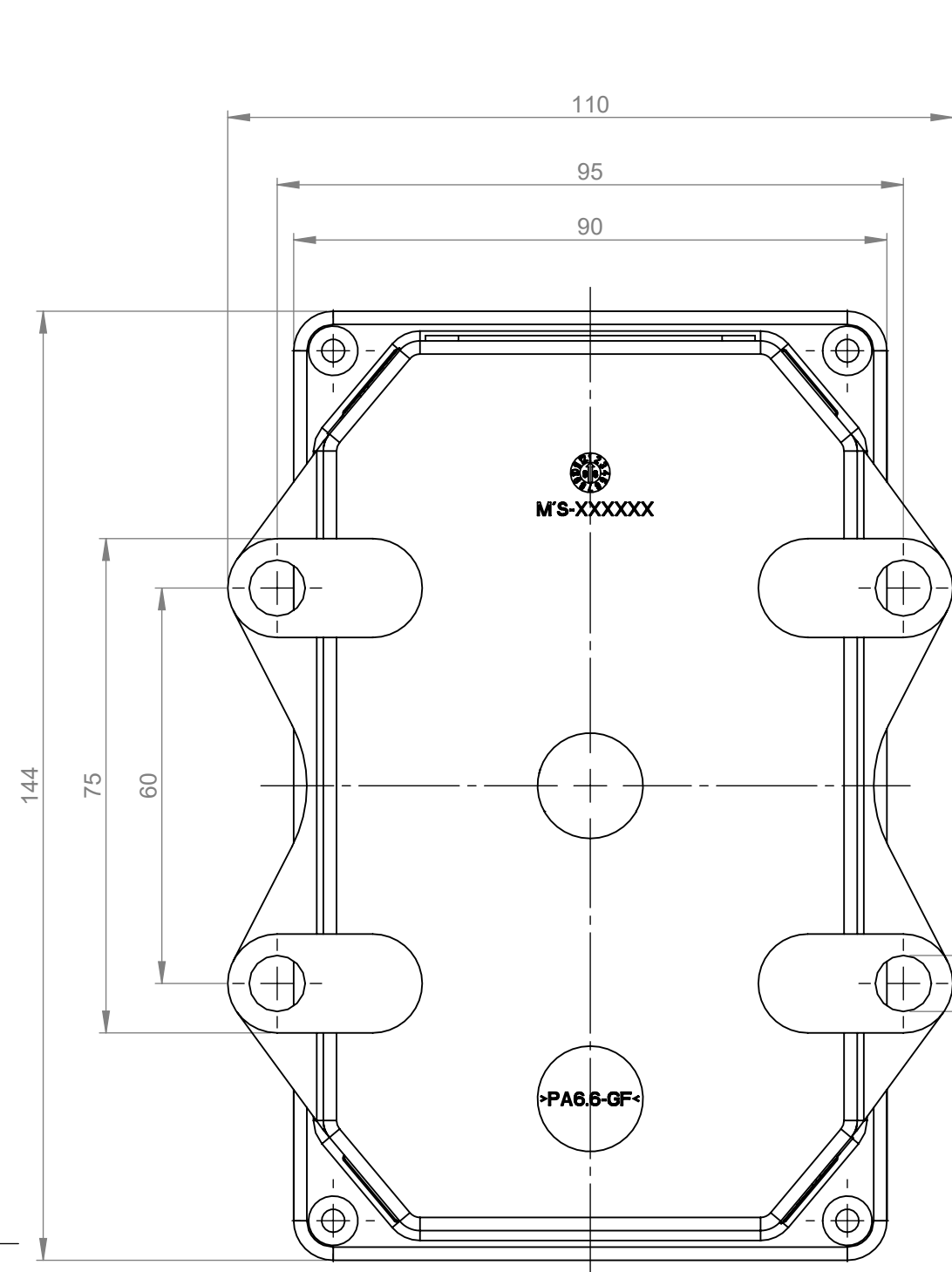


REVISIONS				
REV.	DESCRIPTION	DATE	DESIGNED	APPROVED
A	FIRST ISSUE OF OUTLINE DRAWING	25-June-2020	Gasparini	Tinto



MECHANICAL CHARACTERISTICS

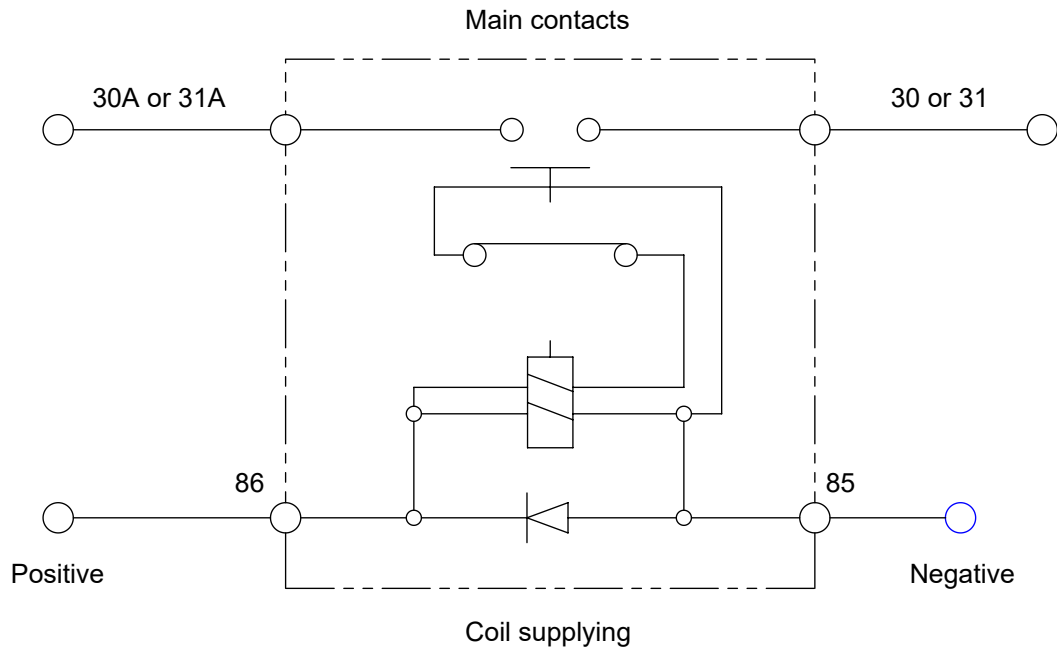
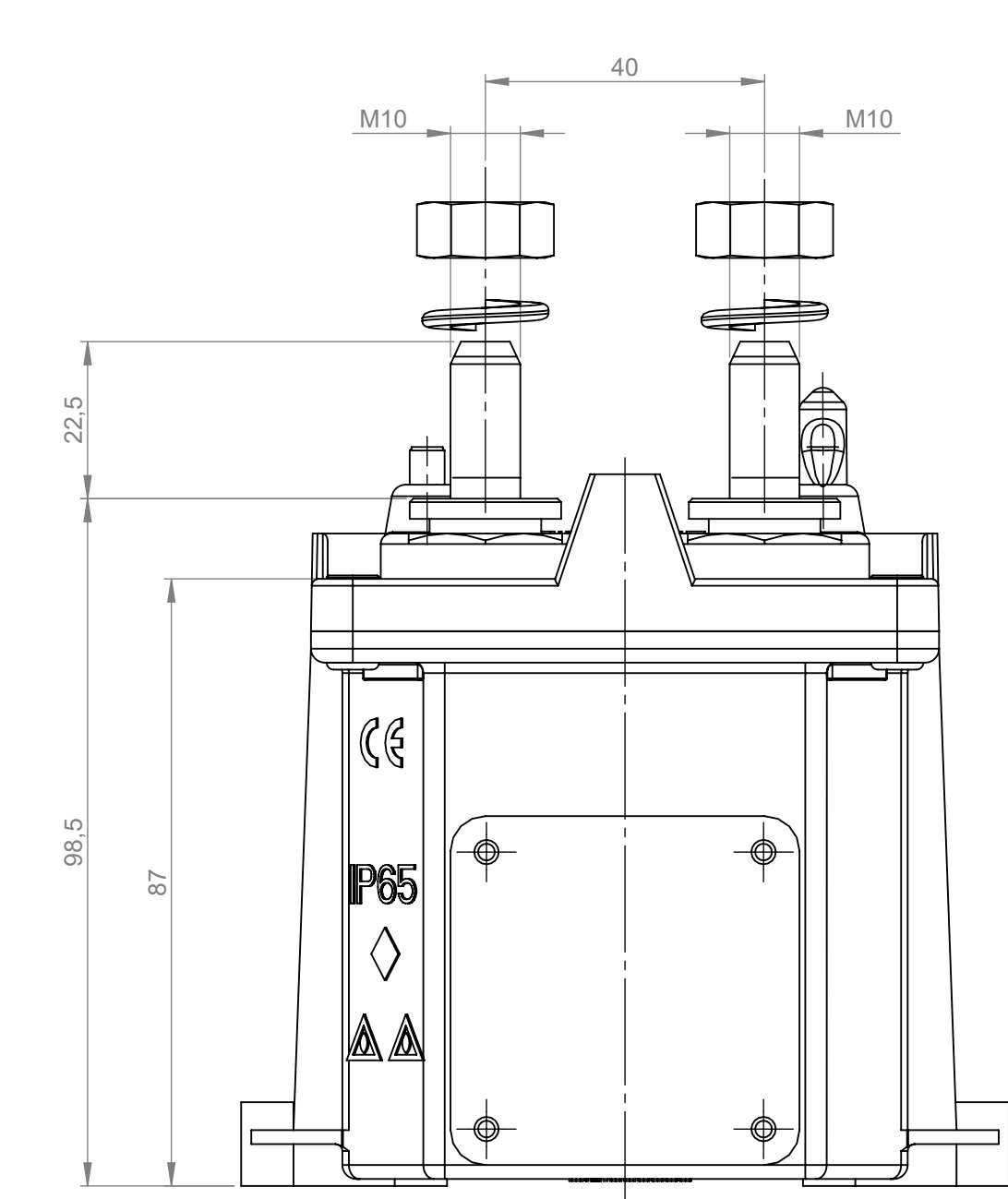
- Number of mechanical and electrical operations: 100.000
- Tightening troque nuts M10/M12: 20 Nm
- Tightening troque nuts M5/M6: 1.6±0.4 Nm

ELECTRICAL CHARACTERISTICS

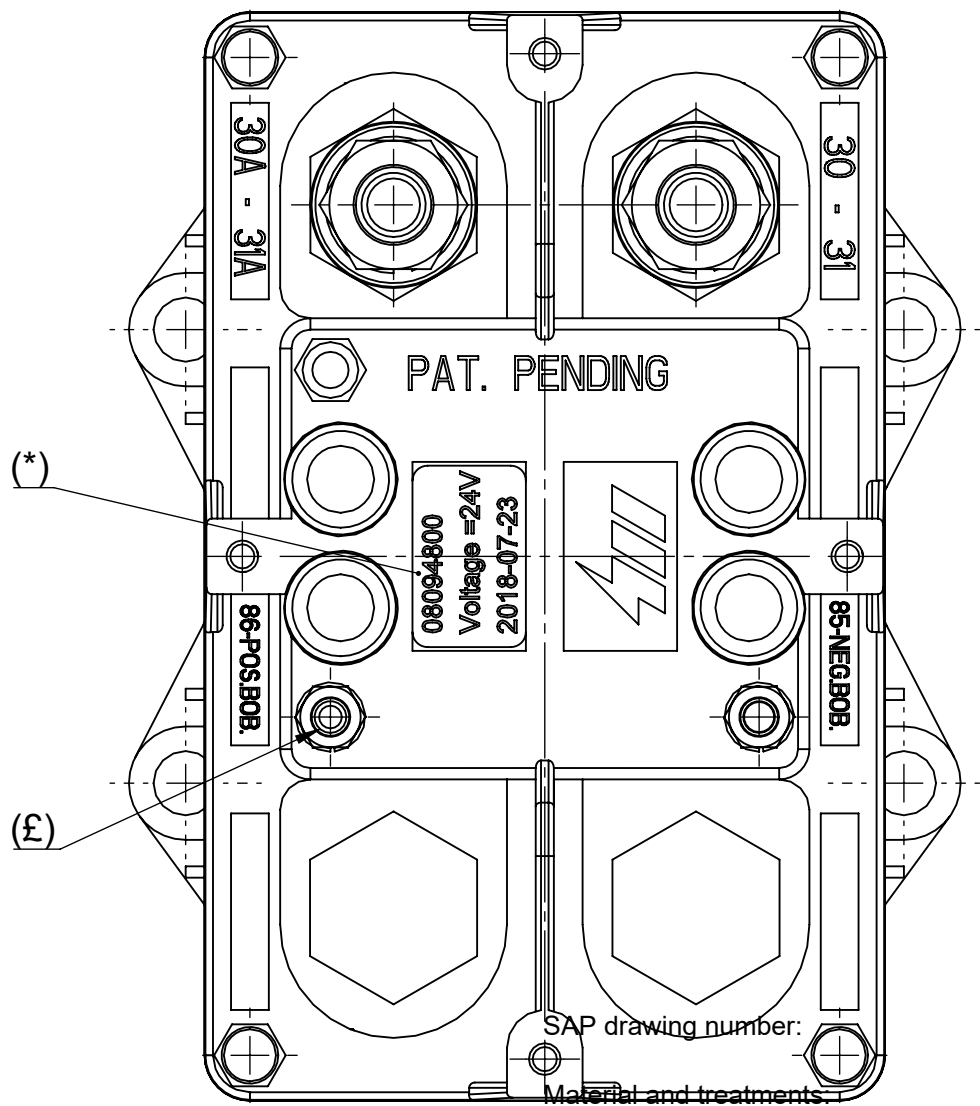
- Nominal voltage range: 12 ÷ 24 V
- Maximum continuos current on main contacts: 250A
- Maximum short time current on main contacts: 2000A at 23°C for 30 sec

PRESCRIPTIONS


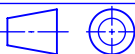
- (*): Manufacturing date according to LITTELFUSE Technical Standard
- (\$): To apply the label indifferently on one box side or the opposite
- (£): Cap for M5 pos. coil pin identification, to remove during TGC installation on vehicle
- It is recommended to fix the TGC to the structure by means of screws M8 UNI 5931:1984 and flat washers 8.4x17 UNI 6592:1969



Electrical diagram



View A

DIMENSIONS AND TOLERANCES IN MILLIMETERS, DEFINED ACCORDING TO ISO 1101-2017.							
linear dimensions							
0,5 3	>3 6	>6 30	>30 120	>120 400	>400 1000	>1000 2000	
±0,2	±0,3	±0,5	±0,8	±1,2	±2	±3	
angle (for range of lengths)							
up to 10	>10 50	>50 120	>120 400	>400 1000	>1000 2000	>2000 4000	
±1°30'	±1°	±0°30'	±0°15'	±0°15'	±0°15'	±0°15'	
●	FIT/ FUNCTION CRITICAL CHARACTERISTICS SYMBOL						
<S>	SAFETY/ COMPLIANCE CRITICAL CHARACTERISTICS SYMBOL						
CPK	DENOTES CPK DIMENSIONS MINIMUM CPK VALUE						
ST	DENOTES A CHARACTERISTIC THAT PROVIDES AN INDICATION OF PROCESS PERFORMANCE.PROCEDURE FOR MEASUREMENT AND TRACKING TO BE DEFINED IN LITTELFUSE INSPECTION INSTRUCTIONS						
CP	DENOTES CP DIMENSIONS. -MINIMUM CP VALUE MUST BE WITHIN THE DIMENSIONAL LIMITATIONS SHOWN ON DRAWING AND INITIALLY LOCATED TO ALLOW FOR MAXIMUM TOOL LIFE						
NAME		DATE		<div> Littelfuse®</div> <div>Expertise Applied Answers Delivered</div>			
DRAWN	L. Dal Molin		20/05/2019				
CHECKED	-		-				
-	-		-				
FORM NO.: CVP-PE40-0013 REV A				TITLE			
FIRST ANGLE PROJECTION				General Electrical Main Switch TGC/S			
		SIZE: A2		DWG. NO.: OL-08094800		OUTLINE REV. A	
DO NOT SCALE DRAWING		SCALE 1:1		SHEET 1 OF 1			