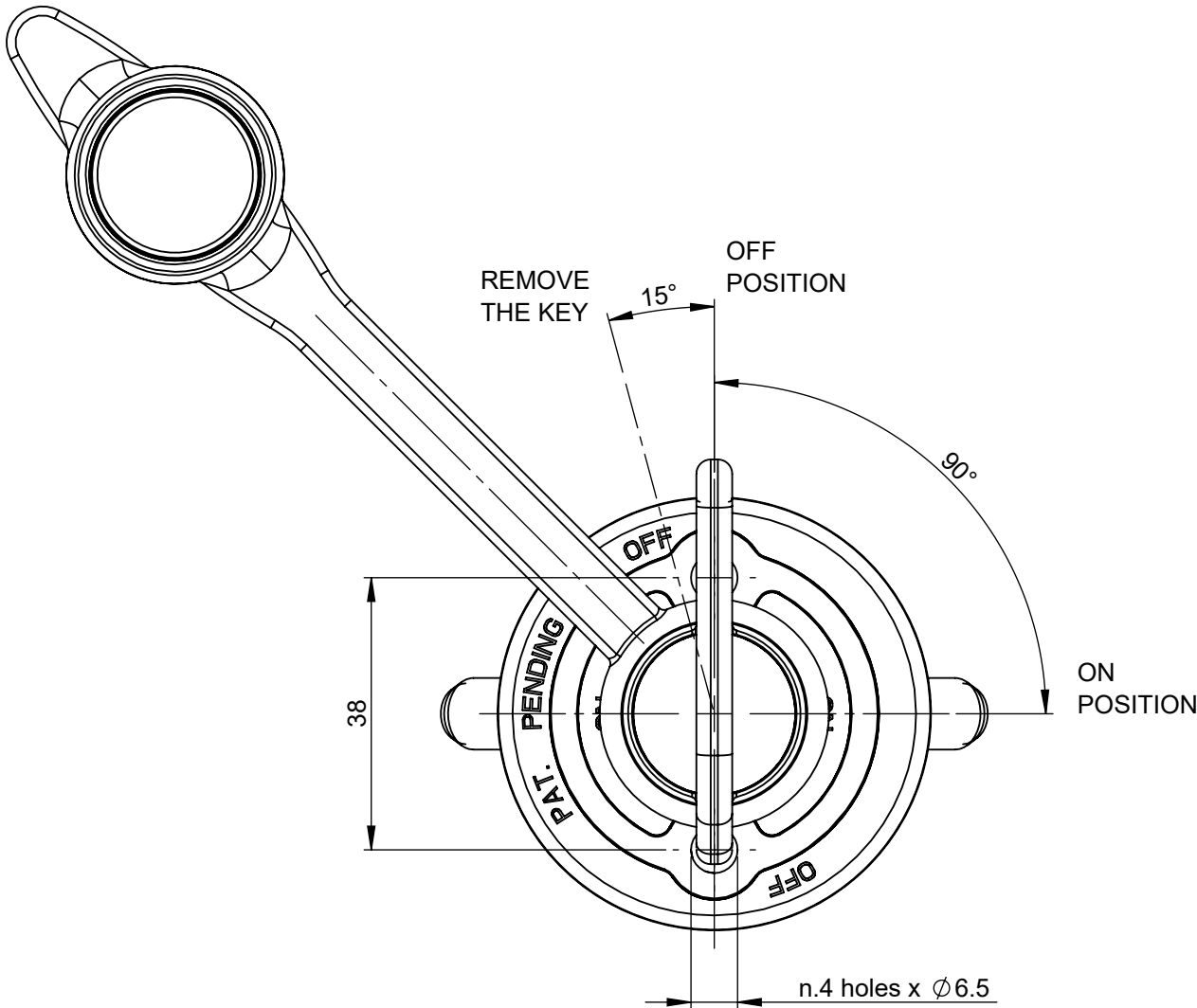
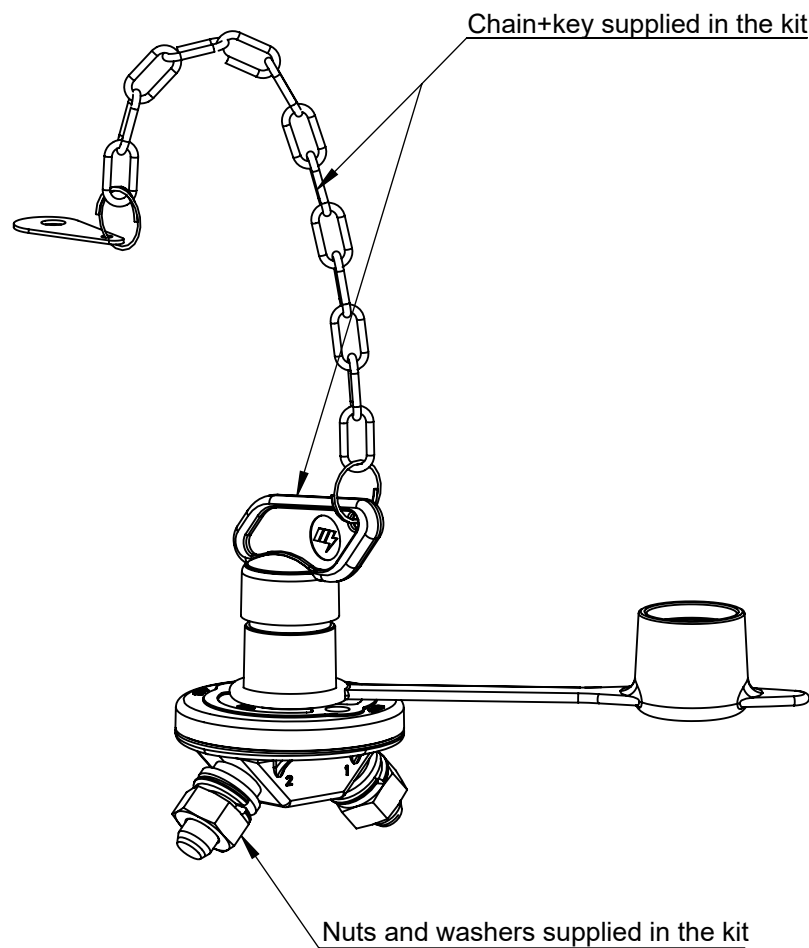
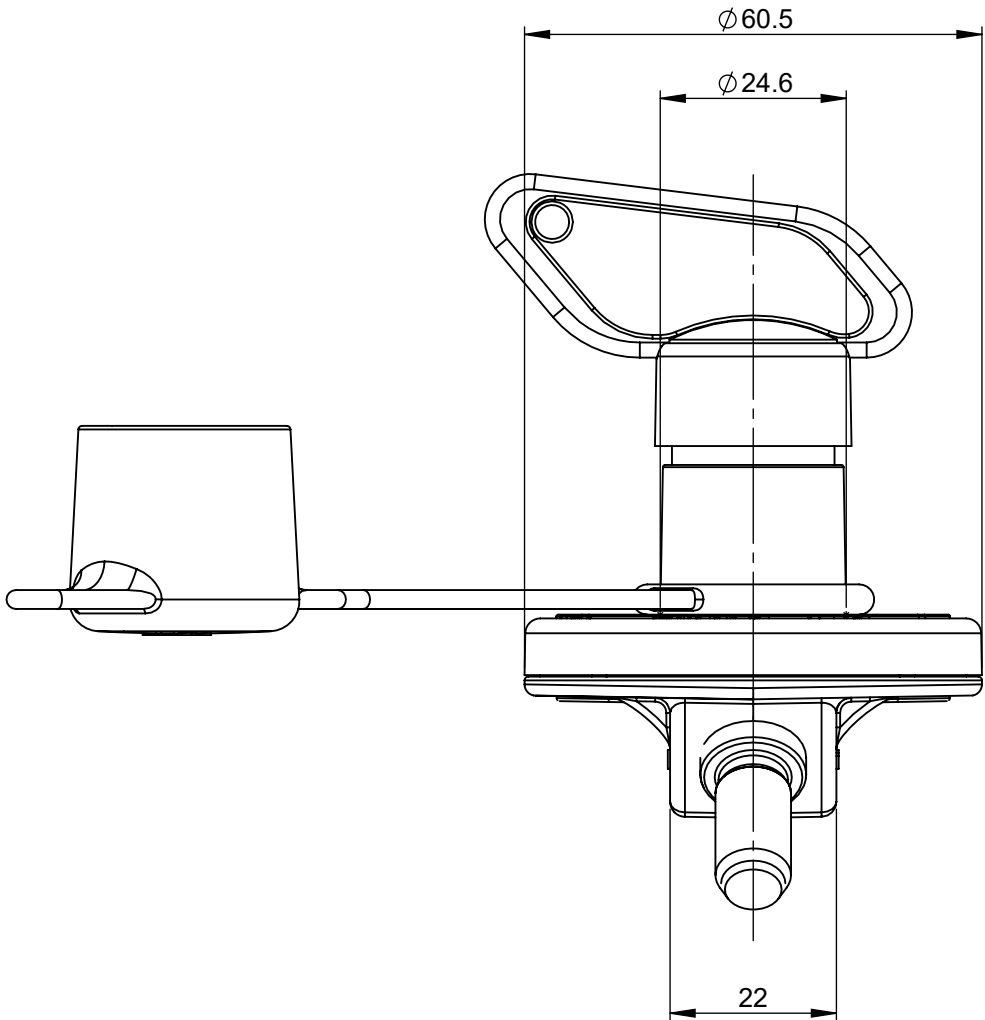
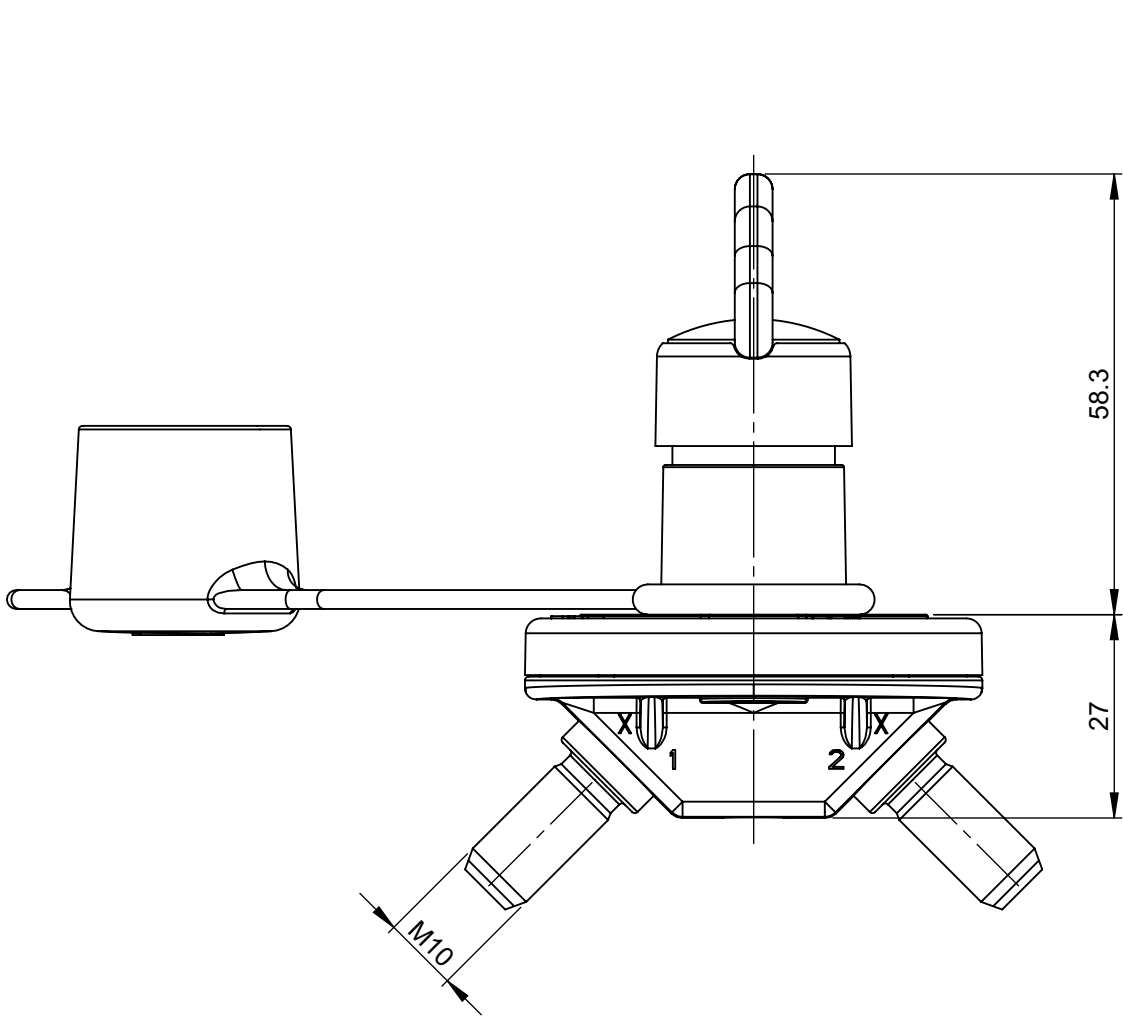
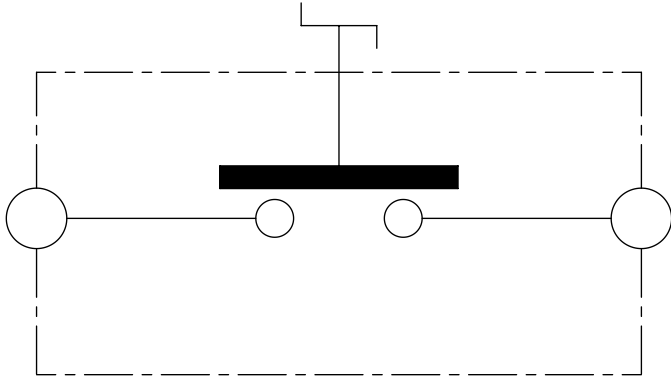


REVISIONS				
REV.	DESCRIPTION	DATE	GCF / ECR	DESIGNED
A	Initial release	22-Jun-22		L.Dal Molin
				APPROVED
				M.Tinto

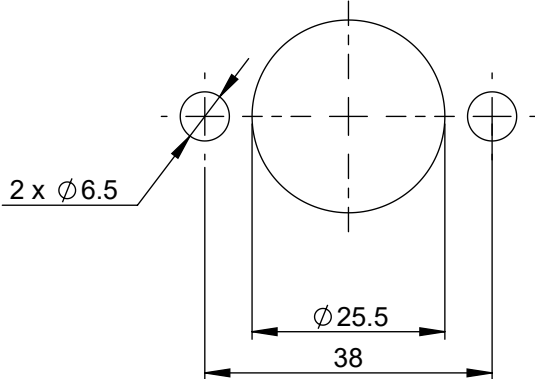



- CHARACTERISTICS AND PRESCRIPTION**
- Nominal voltage: 12-24V
 - Maximum direct current: 150A
 - Maximum short time current: 1200A for 5 sec at 23°C
 - Number of electrical and mechanical cycles: 5.000
 - M10 nuts tightening torque: 20 ± 2 Nm
 - Fix the device to th structure by screws and nuts M6 with tightening torque 3.3 ± 0.2 Nm

Electrical diagram



Fixing holes



DIMENSIONS AND TOLERANCES IN MILLIMETERS, DEFINED ACCORDING TO ISO 1101-2017.				
linear dimensions				
0,5 3	>3 6	>6 30	>30 120	>120 400
±0,2	±0,3	±0,5	±0,8	±1,2
angle (for range of lengths)				
up to 10	>10 50	>50 120	>120 400	>1000 2000
±1°30'	±1°	±0°30'	±0°15'	
●	FIT/ FUNCTION CRITICAL CHARACTERISTICS SYMBOL			
<S>	SAFETY/ COMPLIANCE CRITICAL CHARACTERISTICS SYMBOL			
CPK	DENOTES CPK DIMENSIONS MINIMUM CPK VALUE			
ST	DENOTES A CHARACTERISTIC THAT PROVIDES AN INDICATION OF PROCESS PERFORMANCE.PROCEDURE FOR MEASUREMENTAND TRACKINGTO BE DEFINED IN LITTELFUSE INSPECTION INSTRUCTIONS			
CP	DENOTES CP DIMENSIONS. -MINIMUM CP VALUE MUST BE WITHIN THE DIMENSIONAL LIMITATIONS SHOWN ON DRAWING AND INITIALLY LOCATED TO ALLOW FOR MAXIMUM TOOL LIFE			
	NAME	DATE	 Expertise Applied Answers Delivered	
DRAWN	L. Dal Molin	22-Jun-22		
CHECKED	-	-		
	-	-		
FORM NO: CVP-PE40-0013 REV A			TITLE	
FIRST ANGLE PROJECTION			MANUAL BDS IGC/175-C	
	SIZE:	DWG. NO.	OUTLINE	REV.
	A2	OL-08080380		A
DO NOT SCALE DRAWING			SCALE 1:1	SHEET 1 OF 1