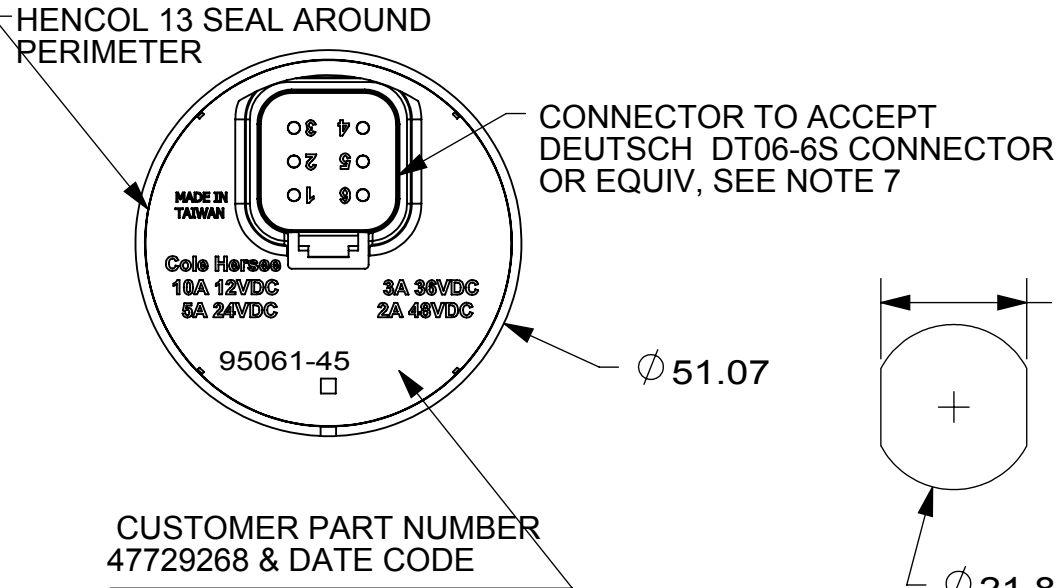
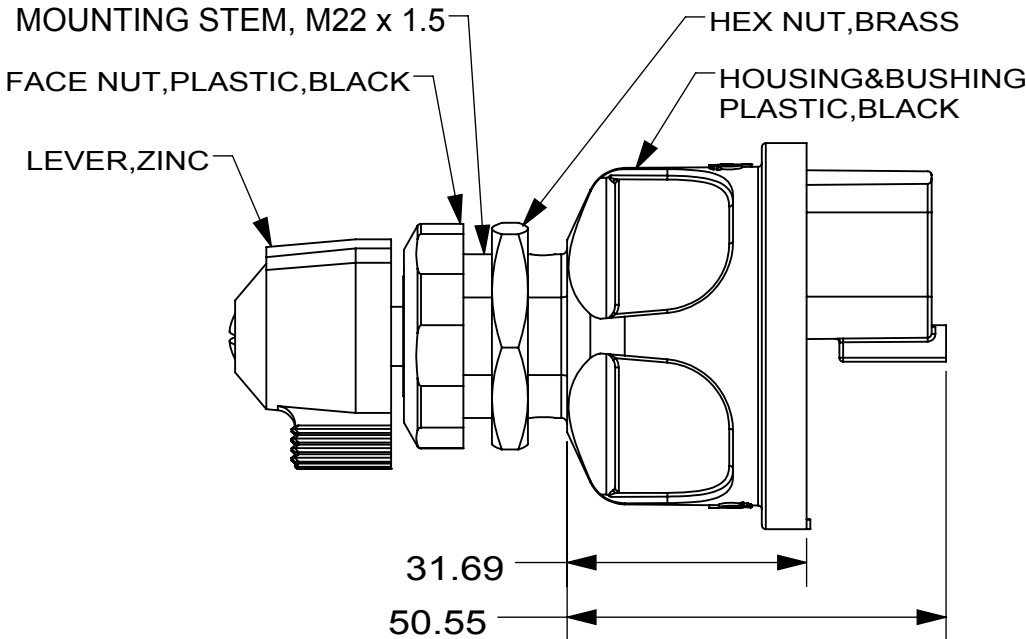
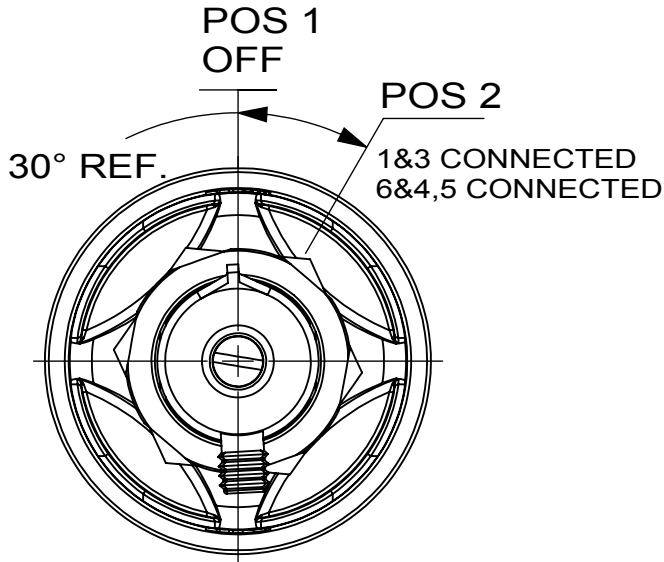


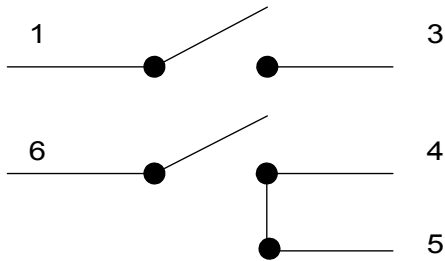
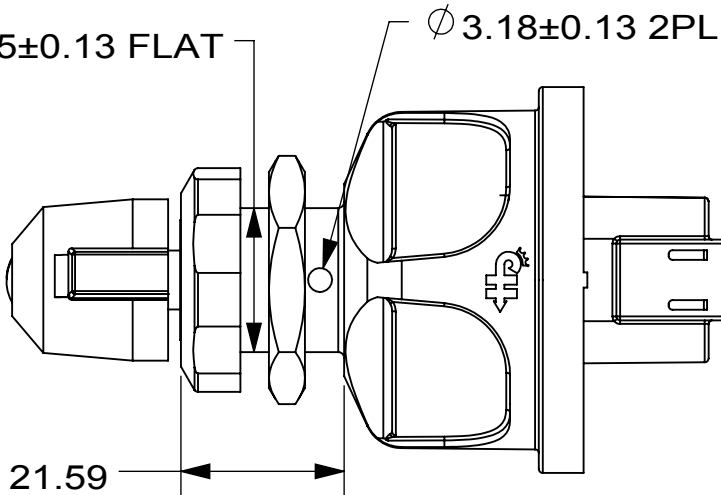
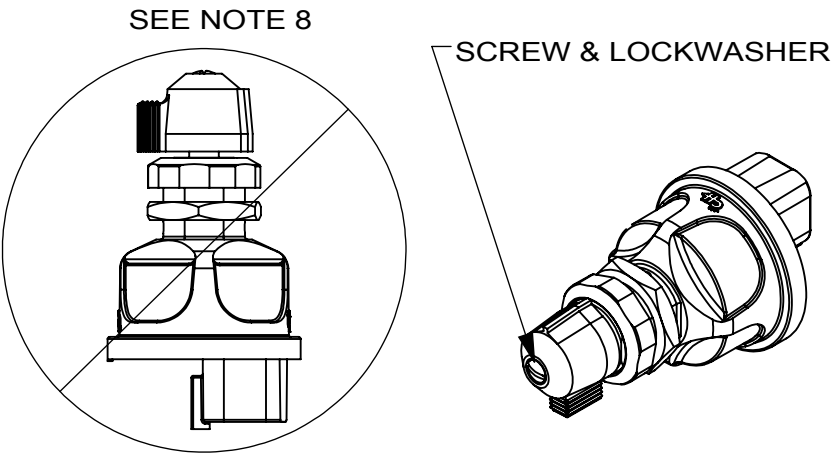
THIS DRAWING AND THE INFORMATION CONTAINED WITHIN IT ARE CONFIDENTIAL AND MAY NOT BE COPIED OR DISCLOSED WITHOUT THE WRITTEN PERMISSION OF LITTELFUSE.

REVISIONS				
ZONE	REV.	DESCRIPTION	DATE	APPROVED
	A	EC #511514-INITIAL RELEASE DRAWING	2015/03/12	
	B	EC #511804 CONVERSION FORMAT FROM CORE HERSEE TO LITTELFUSE	2015/04/16	
	C	EC #514382 ADD TIN PLATING ON INTERNAL CONTACT SURFACES AND SPECIFIC THE TWO CIRCUITS IN DETAIL	2015/06/04	
	D	EC #514928 CHANGE TWO DIMENSIONS AND CHANGE THE INNER SPRING FORCE FROM 200g TO 300g	2015/09/16	
	E	EC #518425 ADD NOTE 14	2017/10/27	
	F	EC #518548 ADD NOTE 15	2017/11/22	
	G	EC #518966 CORRECT A TYPO ON NOTES	2018/02/28	
	H	EC #519980 UPDATE NOTE 14	2018/10/10	



CUSTOMER PART NUMBER
47729268 & DATE CODE

PANEL
MOUNTING HOLE



SCHEMATIC

NOTES: (UNLESS OTHERWISE SPECIFIED)

1. TOLERANCES PLUS OR MINUS 0.38MM
2. CONTACT AREA SEALED TO IP67
3. BACK OF SWITCH SEALED WHEN MATING CONNECTOR IS INSTALLED
4. FOR RESISTIVE LOAD RATING SEE CHART OR BACK OF SWITCH
5. FOR PIN LOCATIONS SEE CHART
6. MATERIALS: HOUSING BLACK THERMOPLASTIC
INTERNAL CONTACT SURFACES TIN PLATED COPPER
CONNECTOR CONTACTS COPPER NICKEL PLATED
7. ALSO MATES WITH LITTELFUSE'S 31101 CONNECTOR ASSEMBLY
8. IF THE APPLICATION REQUIRES THE SWITCH TO BE MOUNTED WITH THE LEVER APPROACHING VERTICAL CONTACT THE FACTORY FOR A REVIEW OR POTENTIAL ALTERNATE PRODUCTS BEFORE THE DESIGN IS SET.
9. NUT TORQUE 5.7 Nm MAX
10. LIFE 25,000 CYCLES
11. ACTUATION TORQUE 0.26Nm AVE
12. MIN. CURRENT AT 24VDC IS 1.5mA. A LOW POWER CIRCUIT CANNOT SWITCH IN EXCESS OF RATING SEE CHART
13. USES A 300g SPRING FOR BOTH CONTACTS
14. THE ALTERNATE RATING FOR TERMINALS 1 & 3 IS 5A @ 24V OR 10A@12V. ONCE A POWER RATING LIKE THIS IS USED THE SWITCH CANNOT BE USED FOR LOW POWER RATING OF 1.5 - 10mA.
15. SWITCH TESTED TO SAE J259 FOR 5A @ 24VDC.


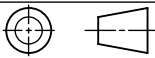
PIN NO.	CIRCUIT	12VDC RESIST. LOAD	24VDC RESIST. LOAD	36VDC RESIST. LOAD
1	BATTERY1		1.5~10mA	1.5~10mA
3	CIRCUIT1		1.5~10mA	1.5~10mA
4&5	CIRCUIT2	10 A	5 A	3 A
6	BATTERY2	10 A	5 A	3 A
PIN 4 & 5 CONNECTED TOGETHER INTERNALLY				

4	85025	LWSH SP 8 ZN15	1	
3	9524-14	SCW FIL 8-32X3/8 ZN15	1	
2	81254	LEVER	1	
1	95061-145	SW ROT IGN PLAST DP	1	
NO.	COMPONENT NO.	COMPONENT NAME	QTY/M	U/M

INTERPRET DRAWING TO ANSI/ASME Y14.5-1994.

●	FIT/ FUNCTION CRITICAL CHARACTERISTICS SYMBOL
<S>	SAFETY/ COMPLIANCE CRITICAL CHARACTERISTICS SYMBOL
CPK	DENOTES CPK DIMENSIONS MINIMUM CPK VALUE
ST	DENOTES A CHARACTERISTIC THAT PROVIDES AN INDICATION OF PROCESS PERFORMANCE.PROCEDURE FOR MEASUREMENTAND TRACKINGTO BE DEFINED IN LITTELFUSE INSPECTION INSTRUCTIONS
CP	DENOTES CP DIMENSIONS, -MINIMUM CP VALUE MUST BE WITHIN THE DIMENSIONAL LIMITATIONS SHOWN ON DRAWING AND INITIALLY LOCATED TO ALLOW FOR MAXIMUM TOOL LIFE

DIMENSION: MM TOLERANCES UNLESS OTHERWISE SPECIFIED
ONE PLACE DECIMAL ± 0.5 THREE PLACES DECIMAL ± 0.100
TWO PLACES DECIMAL ± 0.20 ANGULAR ± 2°

	NAME	DATE	 <div>Littelfuse®</div> <div>Expertise Applied Answers Delivered</div>		
DRAWN	J. LI	2015/03/11			
CHECKED	-	-			
	-	-			
	-	-			
FORM NO: CVP-PE40-0004 REV A			TITLE SW, ROT, IGN, PLSTC		
THIRD ANGLE PROJECTION					
					
DO NOT SCALE DRAWING			SIZE B	DWG. NO. 95061-45	REV. H
SCALE 1:1			SHEET 1 OF 1		