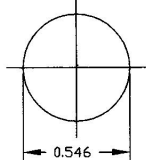
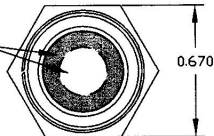


MOUNTING HOLE



LENS, SEE CHART

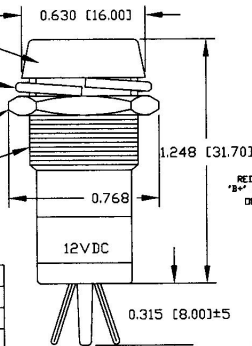


BEZEL, CHROME PLATED

WASHER

HEX NUT

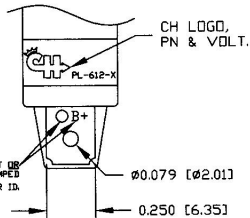
THREAD: M14, P1.0



12VDC

Revision Control Record

Rev.	Description of Change	ECN No.	Date
A	NEW PART	04302	08/18/04



RED PAINT DOT OR  
"B+" METAL STAMPED  
ON TERM. FOR ID.

NOTES:

1. ALL DIMENSIONS ARE REFERENCE.
2. WASHER AND HEX NUT NICKEL PLATED.
3. PILOT LIGHT FITS UP TO .281" THICK PANEL

PT NO	LENS COLOR	BULB
PL-612-R	RED	12V, LED
PL-612-G	GREEN	12V, LED
PL-612-B	BLUE	12V, LED
PL-612-A	AMBER	12V, LED

**Tolerances:** Unless otherwise specifically noted, the following are default tolerances:  
 • 3-place Decimal Dimensions  $\pm .007$   
 • 3-place Decimal Dimensions  $\pm .008$   
 • Angular Dimensions  $\pm 1.0$  Deg.  
 • Metric: Refer to equivalent English Dimension Tolerance  
 >>> NOTE: All tolerances are Non-Cumulative. <<<

**Dimensional Units:** All dimensions are expressed in inches except those shown in brackets (xxx) are expressed in millimeters.

"BFC" or an Asterisk (\*) = Non-Toleranced Reference Dimension, shown for identification purposes only.

**PROPRIETARY INFORMATION:** This Engineering Drawing, and the information contained herein, is proprietary to Cole Horse Company and may not be disclosed, re-produced, or in any other way transferred or communicated to any other party without the express written consent of an authorized representative of Cole Horse Company.

**DESIGN CONTROL:** It is the responsibility of the individual using / referencing this drawing to assure that the noted design revision level agrees with the revision level of the Controlled Document (Master Drawing). This is a NON-CONTROLLED DOCUMENT unless otherwise specifically noted.

DO NOT SCALE - Dimensional variation may occur during printing / reproduction.

Special Characteristics:

- ⊠ Critical Characteristics, relating to Safety and/or Regulatory Compliance
- X Significant Characteristics relating to Process Control (SPC)
- ⊙ Key Characteristics relating to Form - Fit - Function as defined by Cole Horse Company and/or the Customer

(Note that the identification of any Characteristics as being "Special" does not alter the requirement that ALL specified dimensions & tolerances must be met.)

**Cole Horse Co.**



20 Old Colony Ave., South Boston, MA, 02127  
 Phs 617-288-2100 Web: www.colehorse.com

Description:

**PILOT LIGHT, L.E.D**

Drawing / Part No.:

**PL-612, CHART**

Current Rev.:

**A**

Used On or Ref:

Scale: **2:1**

Drawn By: **GA**

Date Drawn: **04/14/04**

Responsible Engineer: **GA**

Pg. 1 of 1