

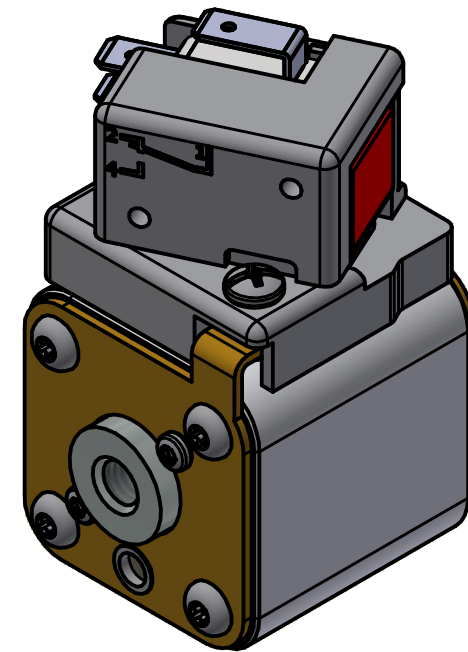
MOUNTING SPECS:

STUD SIZE: M8x1.25 - 6H ∇ 6.0[0.24]

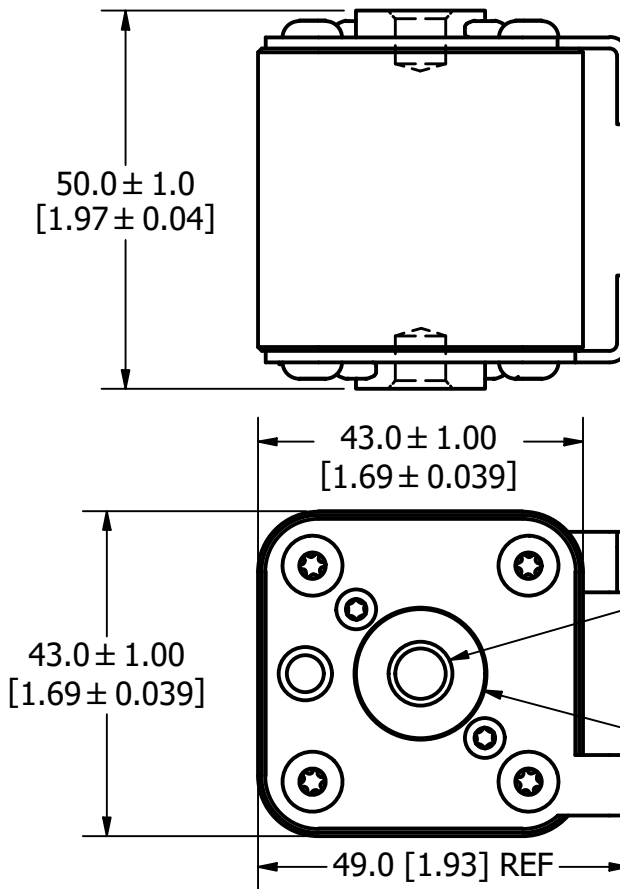
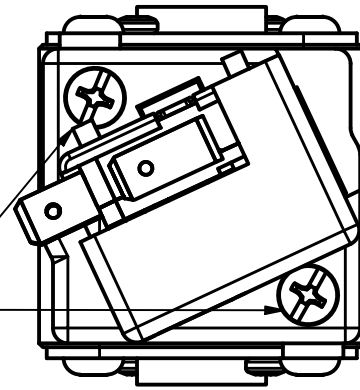
STUD TORQUE: 13-20Nm

REVISION		
REV	DATE	DESCRIPTION
A	03/16/2017	517373GCP - RELEASED -TV
B	10/19/2017	518344ECP - REVISE MOUNTING SPEC NOTES -TV
C	8/30/18	519782ECP/D - CHG STUD TORQUE MRY
D	5/5/22	525159ECP/C - UPDATE HEIGHT, ADD TOLERANCES MRY
E	5/19/22	525232ECP/D - UPDATE LENGTH DIMENSION MRY
F	7/14/22	525433ECP/D - CHANGE HEIGHT DIMENSION FORMAT MRY
G	1/9/23	526835ECP/G - ADDED VIEW WITHOUT MICRO-SWITCH JTM

FUSE WITH MICRO-SWITCH

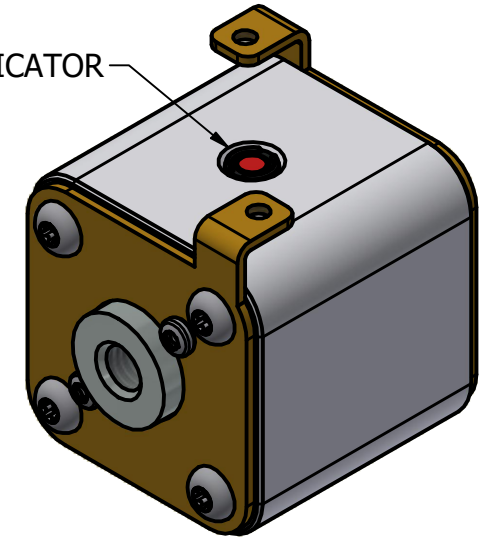


M4x0.7 THREAD
10.00[.394]
STUD LENGTH



FUSE

INTERNAL INDICATOR



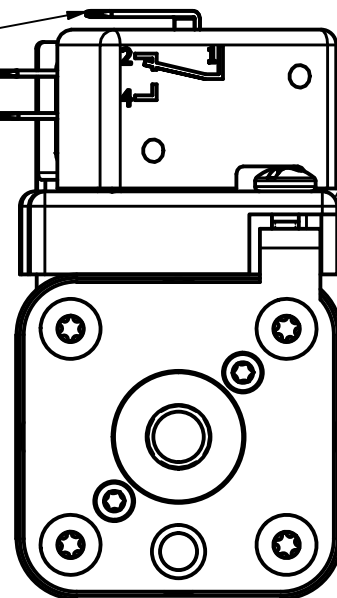
43.0 ± 1.00
[1.69 ± 0.039]

SEE STUD SIZE

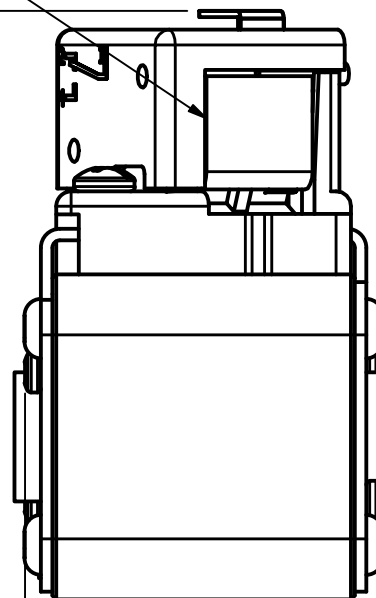
Ø17
[0.7]

VISUAL INDICATOR

1/4" Q.C.
TERMINAL



77.9 ± 1.50
[3.07 ± 0.059]



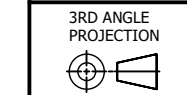
FUSE WITH MICRO-SWITCH

●	DENOTES CRITICAL CHARACTERISTICS.
CPK	DENOTES CPK DIMENSIONS, -MINIMUM CPK VALUE
ST	DENOTES A CHARACTERISTIC THAT PROVIDES AN INDICATION OF PROCESS PERFORMANCE. PROCEDURE FOR MEASUREMENT AND TRACKING TO BE DEFINED IN LITTELFUSE INSPECTION INSTRUCTIONS.
CP	DENOTES CP DIMENSIONS, -MINIMUM CP VALUE MUST BE WITHIN THE DIMENSIONAL LIMITATIONS SHOWN ON DRAWING AND INITIALLY LOCATED TO ALLOW FOR MAXIMUM TOOL LIFE.

B

MATL SPEC		FINISH	
DRW TVESELSK	DATE 12/31/1969	SCALE NTS	FINISH GOOD WT GRAMS/PIECE

UNLESS OTHERWISE SPECIFIED, DIMENSIONS ARE IN MILLIMETERS, DIMENSIONS IN BRACKETS [] ARE INCHES DIMENSIONING AND DO NOT INCLUDE PLATING. TOLERANCING TO BE INTERPRETED IN ACCORDANCE WITH ANSI Y14.5M-1994

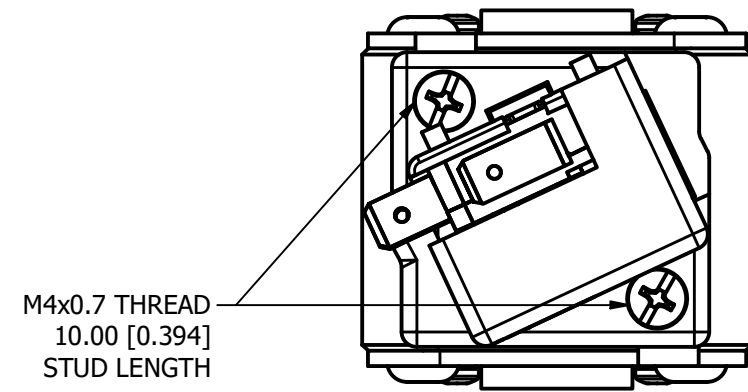


TITLE SQUARE BODY 30 CASE SIZE - METRIC THREAD OUTLINE

<p>CHICAGO, ILLINOIS 60631</p>	REVISION	DRWG NO.	SHEET 1 OF 1
	G	OL-PSR030FL0000	

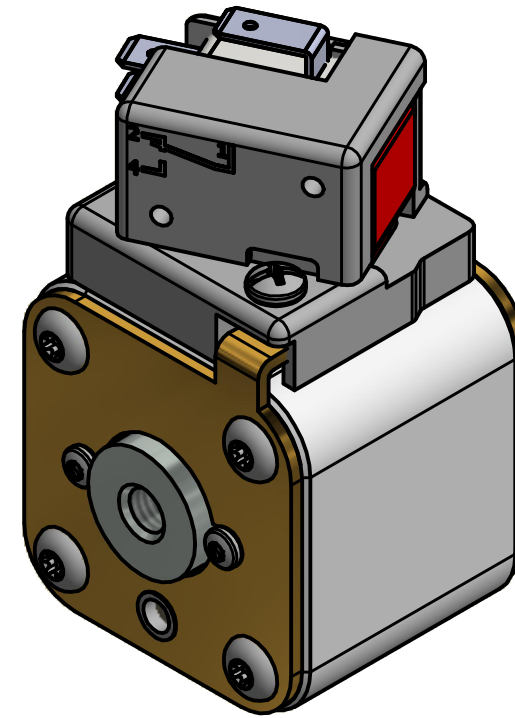
MOUNTING SPECS:
 STUD SIZE: M8x1.25 - 6H ∇ 8.0[0.31]
 STUD TORQUE: 13-20Nm

REVISION		
REV	DATE	DESCRIPTION
A	08/11/2017	518016GCP - RELEASED -TV
B	10/19/2017	518344ECP - REVISE MOUNTING SPEC NOTES -TV
C	8/30/18	519782ECP/D - CHG STUD TORQUE MRY
D	5/5/22	525159ECP/D - CHANGE HEIGHT, ADD TOLERANCES MRY
E	5/19/22	525232ECP/D - UPDATE LENGTH DIMENSION MRY
F	7/14/22	525433ECP/D - CHANGE HEIGHT DIMENSION FORMAT MRY
G	1/12/24	526835ECP/D - ADDED VIEW WITHOUT MICRO-SWITCH JTM



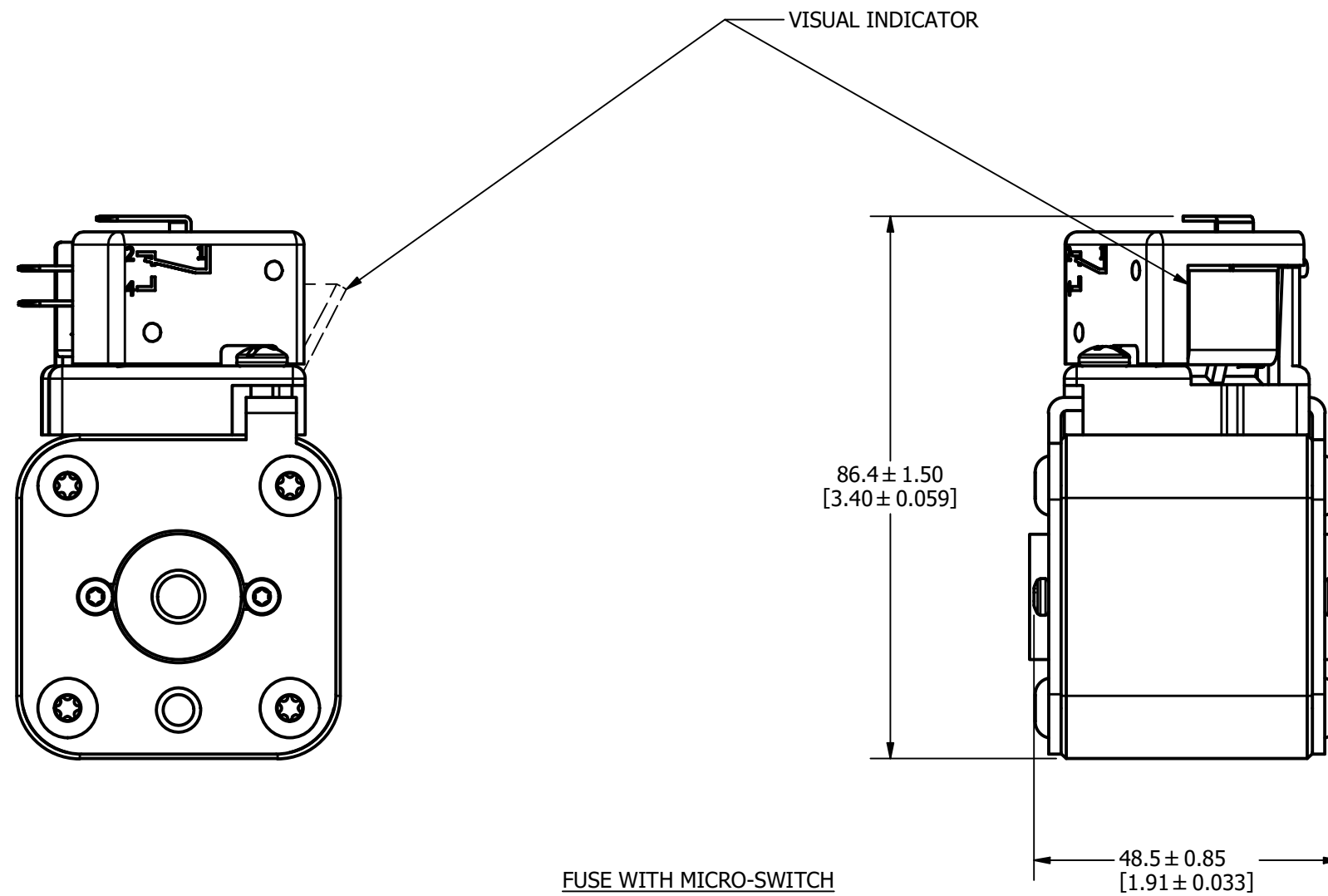
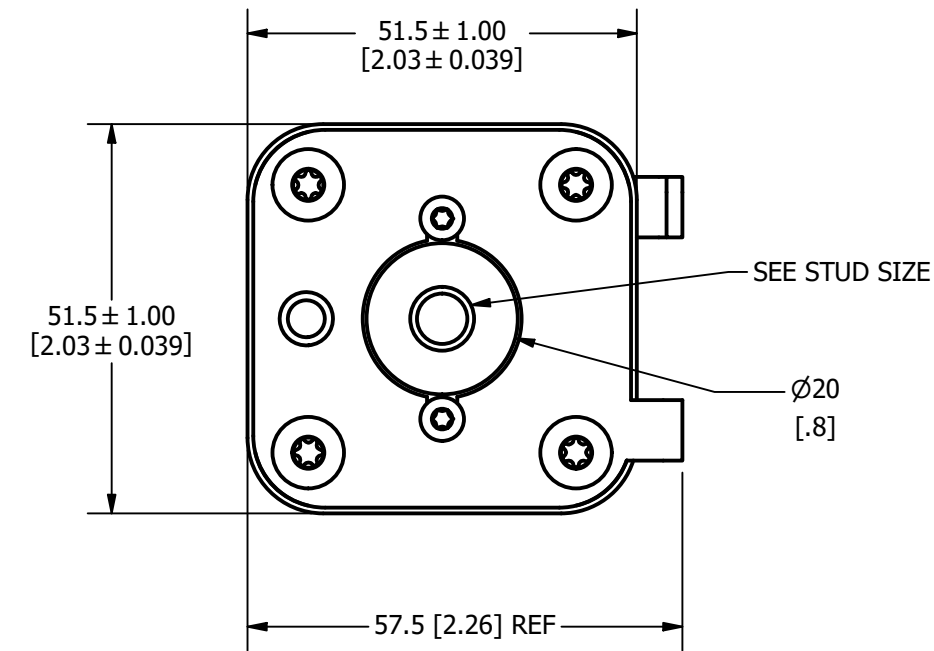
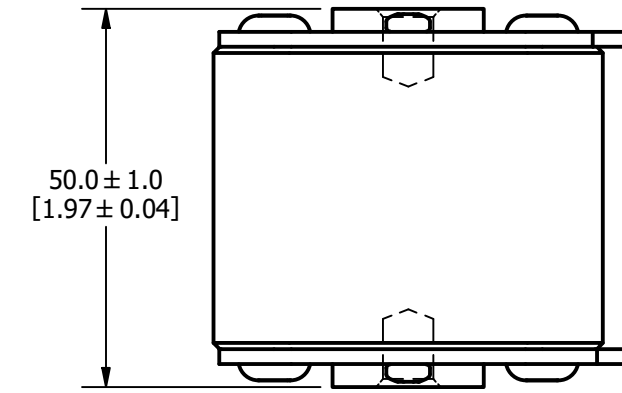
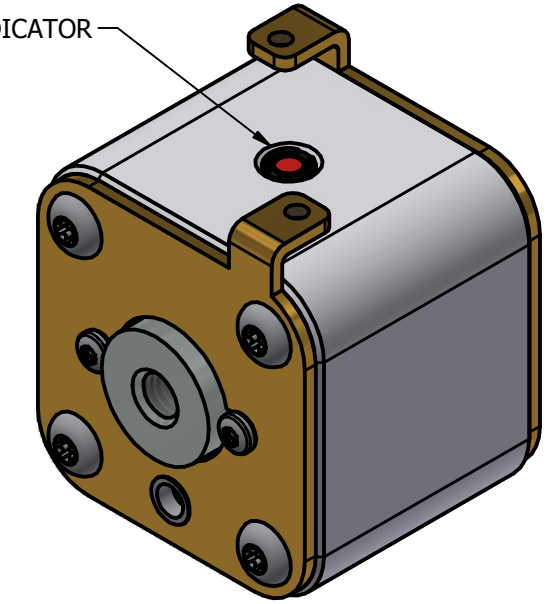
M4x0.7 THREAD
 10.00 [0.394]
 STUD LENGTH

FUSE WITH MICRO-SWITCH



FUSE

INTERNAL INDICATOR

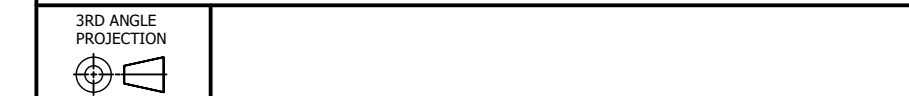


FUSE WITH MICRO-SWITCH

●	DENOTES CRITICAL CHARACTERISTICS.
CPK	DENOTES CPK DIMENSIONS, -MINIMUM CPK VALUE
(ST)	DENOTES A CHARACTERISTIC THAT PROVIDES AN INDICATION OF PROCESS PERFORMANCE. PROCEDURE FOR MEASUREMENT AND TRACKING TO BE DEFINED IN LITTELFUSE INSPECTION INSTRUCTIONS.
CP	DENOTES CP DIMENSIONS, -MINIMUM CP VALUE. MUST BE WITHIN THE DIMENSIONAL LIMITATIONS SHOWN ON DRAWING AND INITIALLY LOCATED TO ALLOW FOR MAXIMUM TOOL LIFE.

MATL SPEC	FINISH		
DRW TVESELSK	DATE 1/12/2024	SCALE NTS	FINISH GOOD WT GRAMS/PIECE

UNLESS OTHERWISE SPECIFIED, DIMENSIONS ARE IN MILLIMETERS, DIMENSIONS IN BRACKETS [] ARE INCHES DIMENSIONING AND DO NOT INCLUDE PLATING. TOLERANCING TO BE INTERPRETED IN ACCORDANCE WITH ANSI Y14.5M-1994



TITLE SQUARE BODY 31 CASE SIZE - METRIC THREAD OUTLINE

REVISION		
REV	DATE	DESCRIPTION
A	03/16/2016	517373GCP - RELEASED -TV
B	10/19/2017	518344ECP - REVISE MOUNTING SPEC NOTES -TV
C	8/30/18	519782ECP/D - CHG STUD TORQUE MRY
D	5/5/22	525159ECP/D - CHANGE HEIGHT, ADD TOLERANCES MRY
E	5/19/22	525232ECP/D - UPDATE LENGTH DIMENSION MRY
F	7/14/22	525433ECP/D - CHANGE HEIGHT DIMENSION FORMAT MRY
G	1/12/24	526835ECP/D - ADDED VIEW WITHOUT MICRO-SWITCH JTM

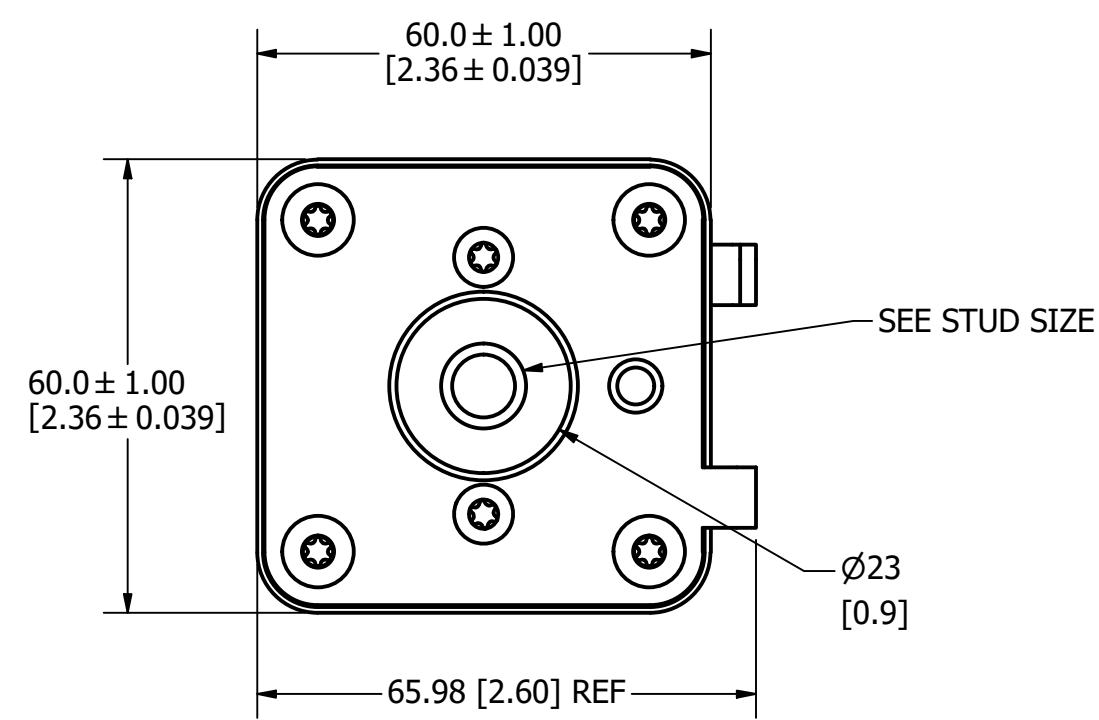
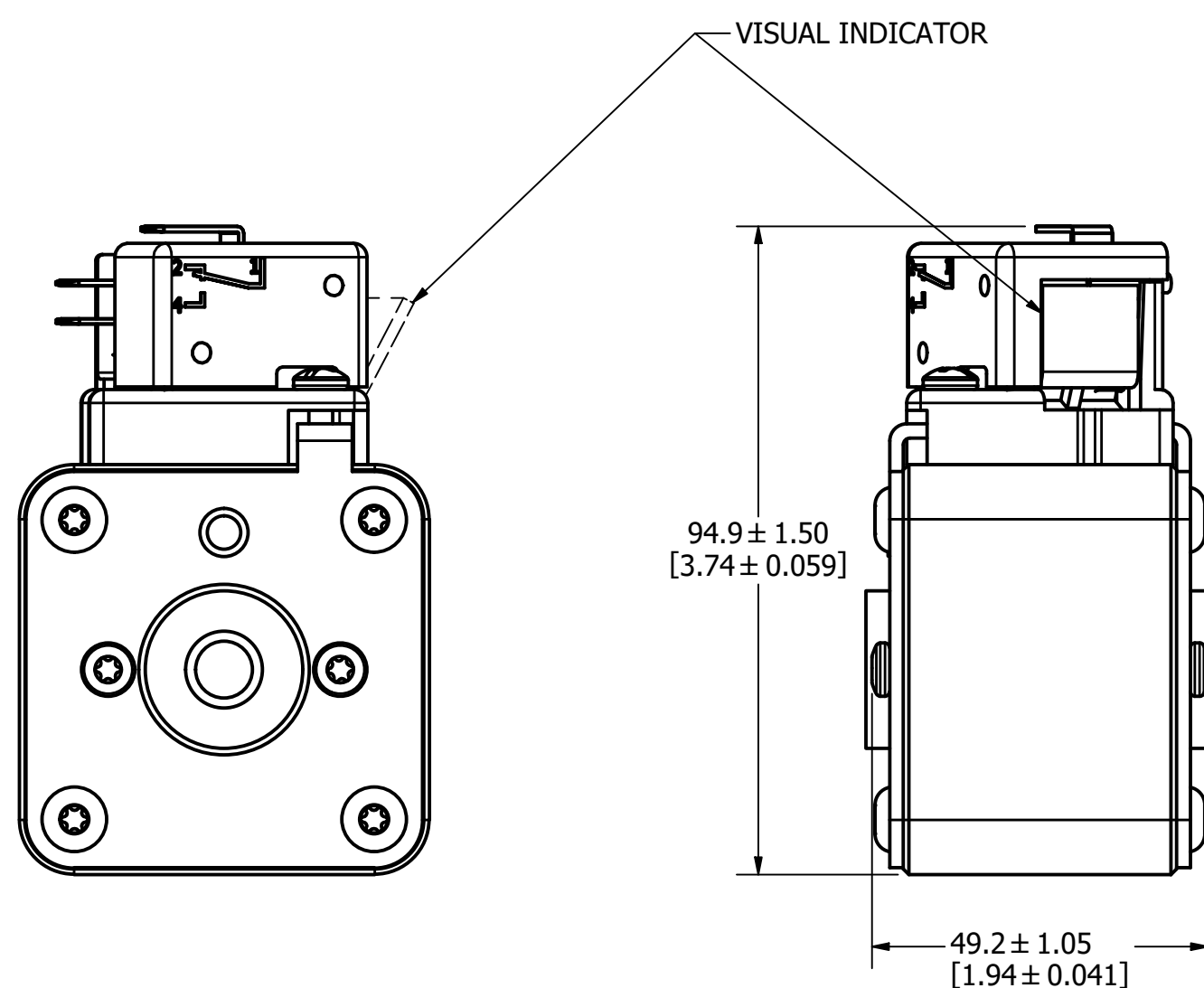
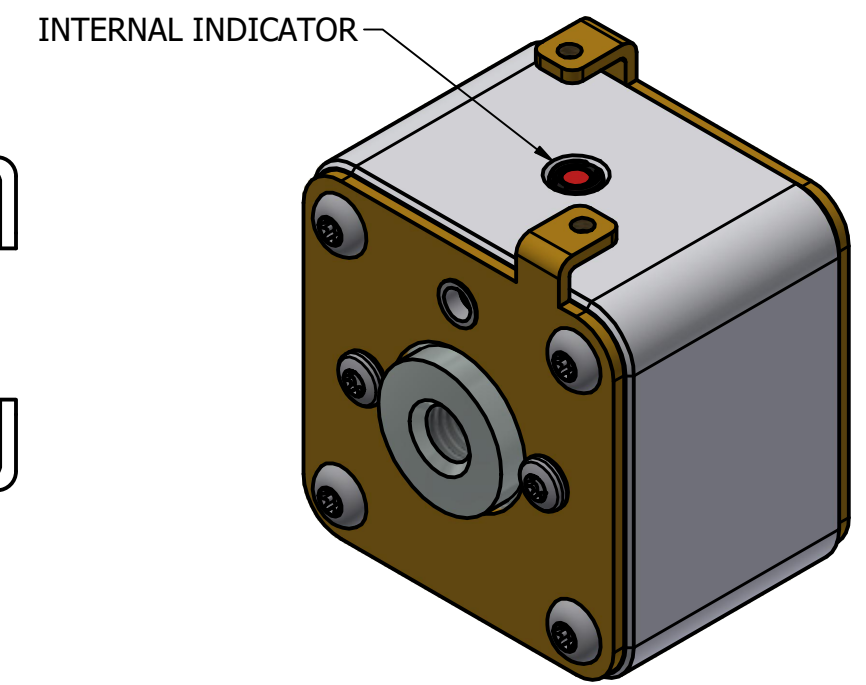
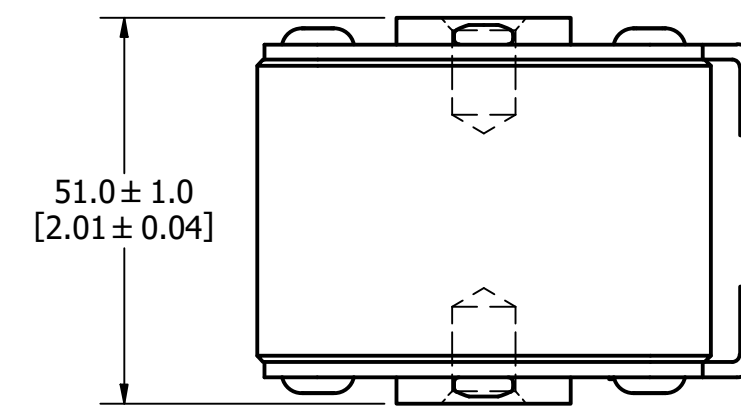
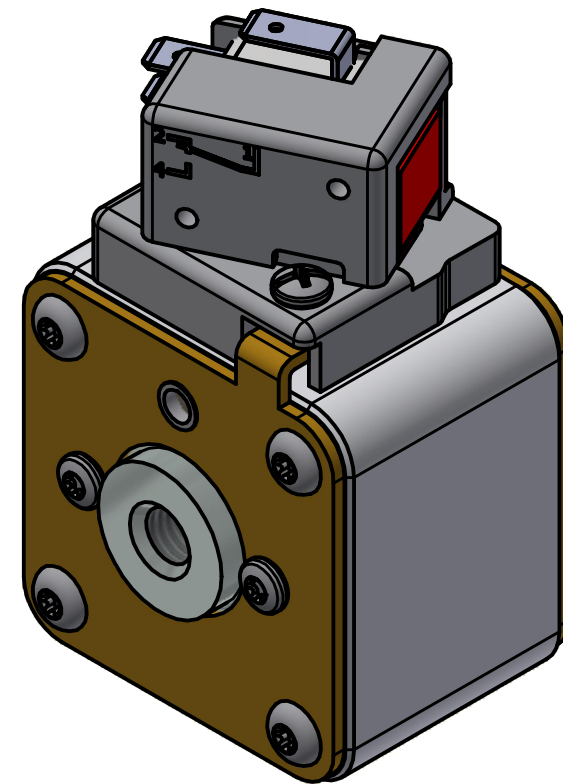
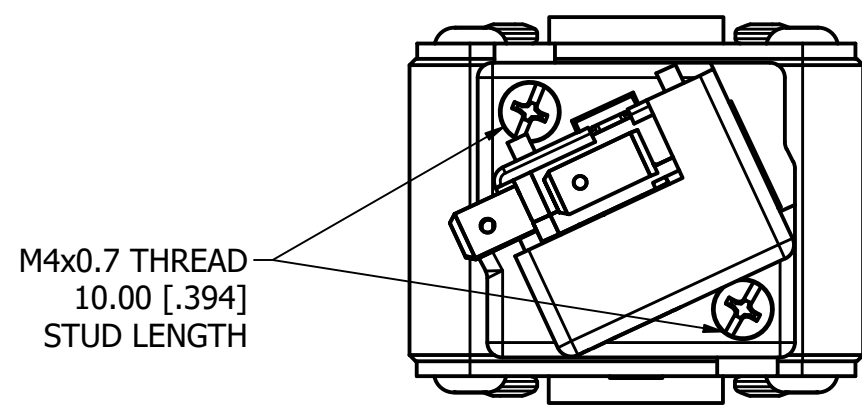
MOUNTING SPECS:

STUD SIZE: M10x1.5 - 6H ∇ 11.5 [0.45]

STUD TORQUE: 26-35Nm

FUSE WITH MICRO-SWITCH

FUSE

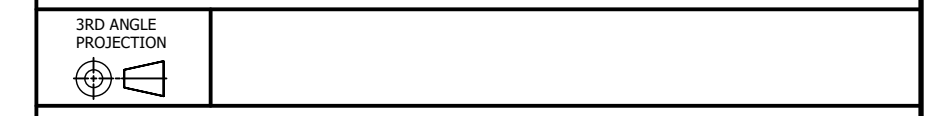


FUSE WITH MICRO-SWITCH

●	DENOTES CRITICAL CHARACTERISTICS.
CPK	DENOTES CPK DIMENSIONS, -MINIMUM CPK VALUE
(ST)	DENOTES A CHARACTERISTIC THAT PROVIDES AN INDICATION OF PROCESS PERFORMANCE. PROCEDURE FOR MEASUREMENT AND TRACKING TO BE DEFINED IN LITTELFUSE INSPECTION INSTRUCTIONS.
CP	DENOTES CP DIMENSIONS, -MINIMUM CP VALUE MUST BE WITHIN THE DIMENSIONAL LIMITATIONS SHOWN ON DRAWING AND INITIALLY LOCATED TO ALLOW FOR MAXIMUM TOOL LIFE.

MATL SPEC	FINISH		
DRW TVESELSK	DATE 1/12/2024	SCALE NTS	FINISH GOOD WT GRAMS/PIECE

UNLESS OTHERWISE SPECIFIED, DIMENSIONS ARE IN MILLIMETERS, DIMENSIONS IN BRACKETS [] ARE INCHES DIMENSIONING AND DO NOT INCLUDE PLATING. TOLERANCING TO BE INTERPRETED IN ACCORDANCE WITH ANSI Y14.5M-1994



TITLE SQUARE BODY 32 CASE SIZE - METRIC THREAD OUTLINE

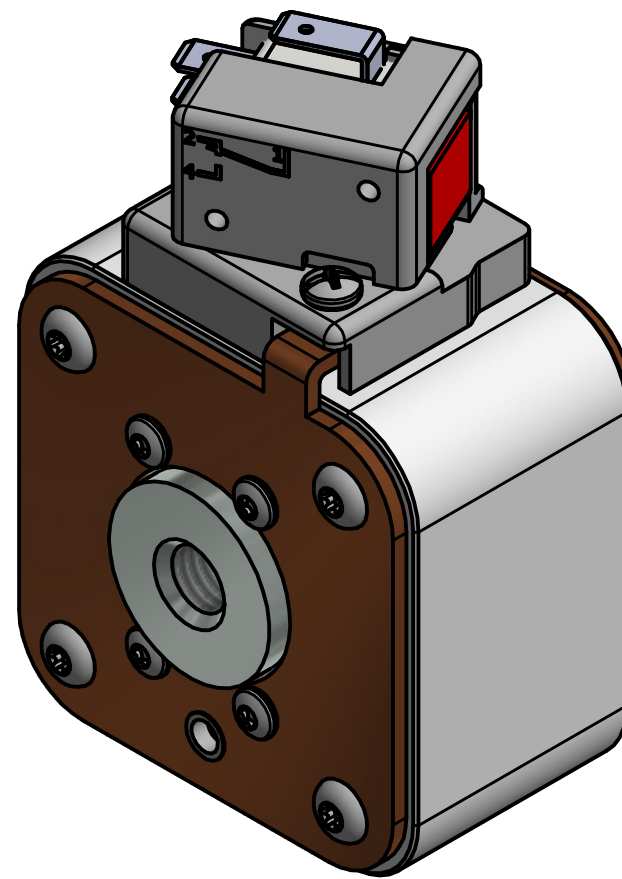
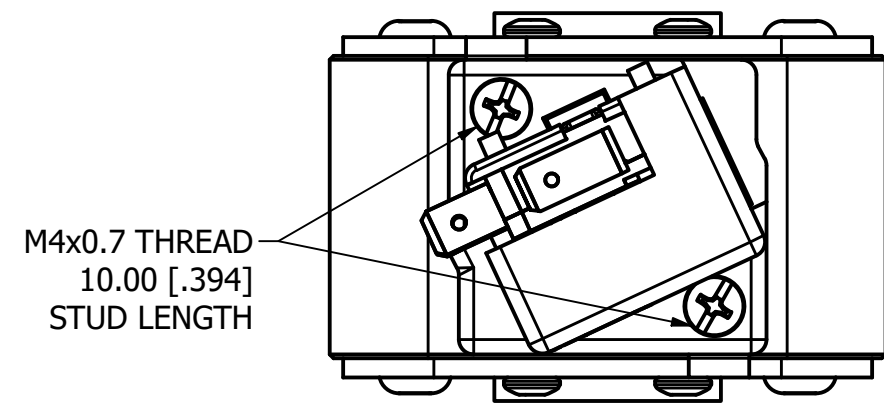
MOUNTING SPECS:

STUD SIZE: M12x1.75-6H ∇ 13.0[0.51]

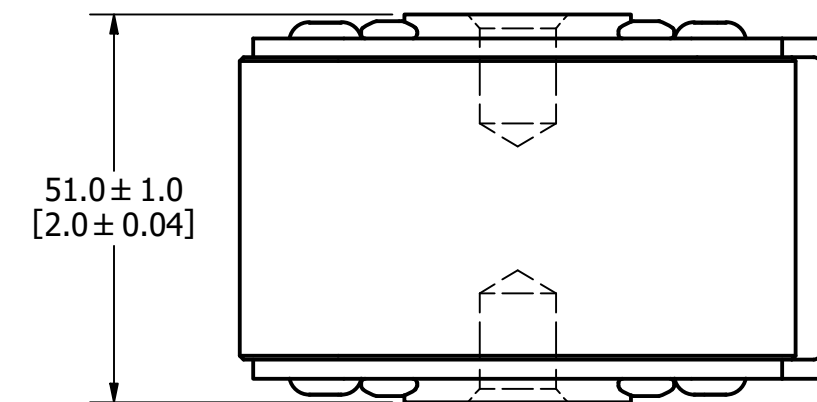
STUD TORQUE: 45-55Nm

REVISION		
REV	DATE	DESCRIPTION
A	03/16/2016	517373GCP - RELEASED -TV
B	10/19/2017	518344ECP - REVISE STUD SIZE NOTES -TV
C	8/30/18	519782ECP/D - CHG STUD TORQUE MRY
D	5/5/22	525159ECP/D - CHANGE HEIGHT, ADD TOLERANCES MRY
E	5/19/22	525232ECP/D - UPDATE LENGTH DIMENSION MRY
F	7/14/22	525433ECP/D - CHANGE HEIGHT DIMENSION FORMAT MRY
G	1/17/24	526835ECP/D - ADDED VIEW WITHOUT MICRO-SWITCH JTM

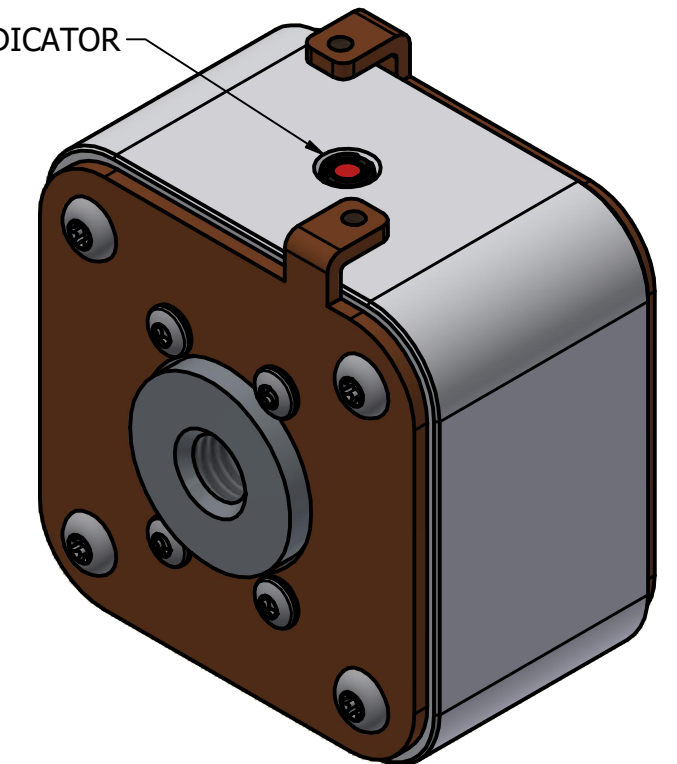
FUSE WITH MICRO-SWITCH



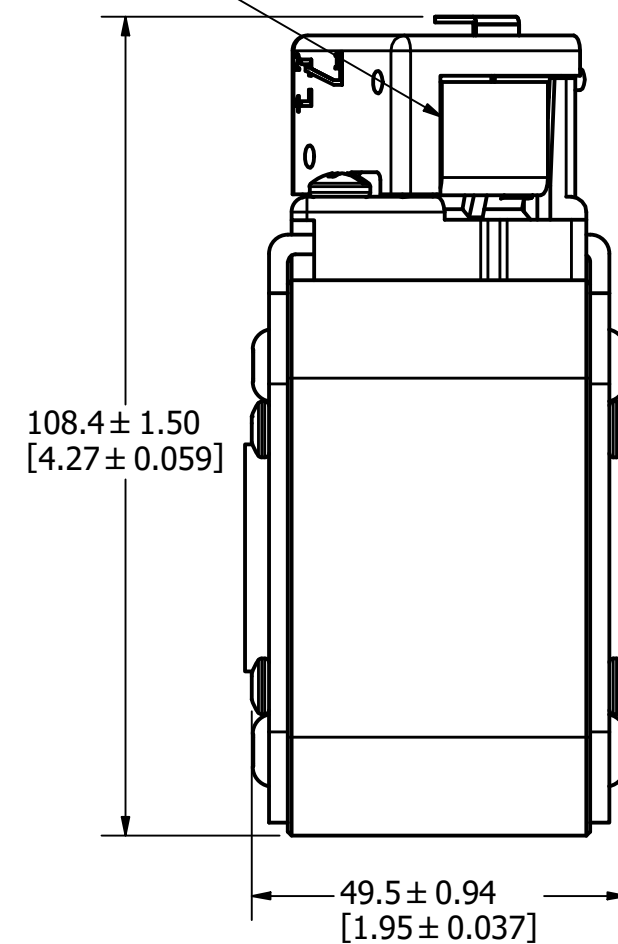
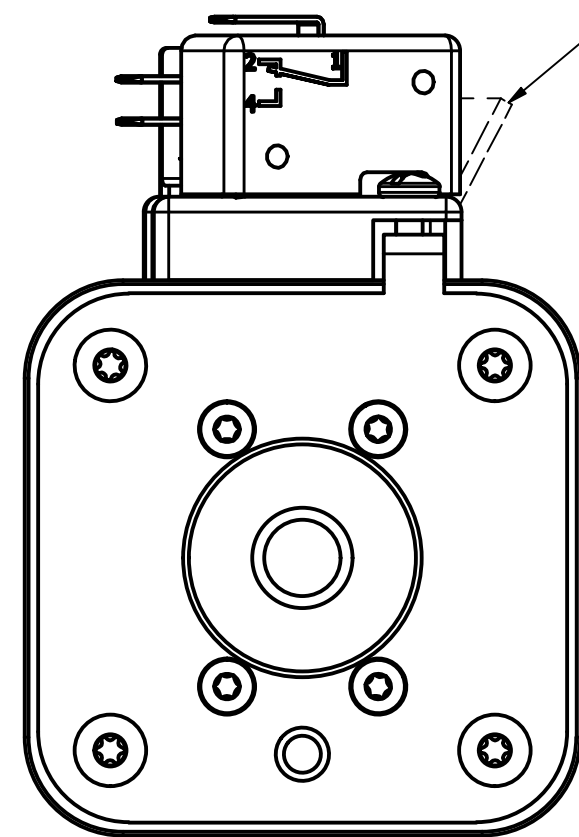
FUSE



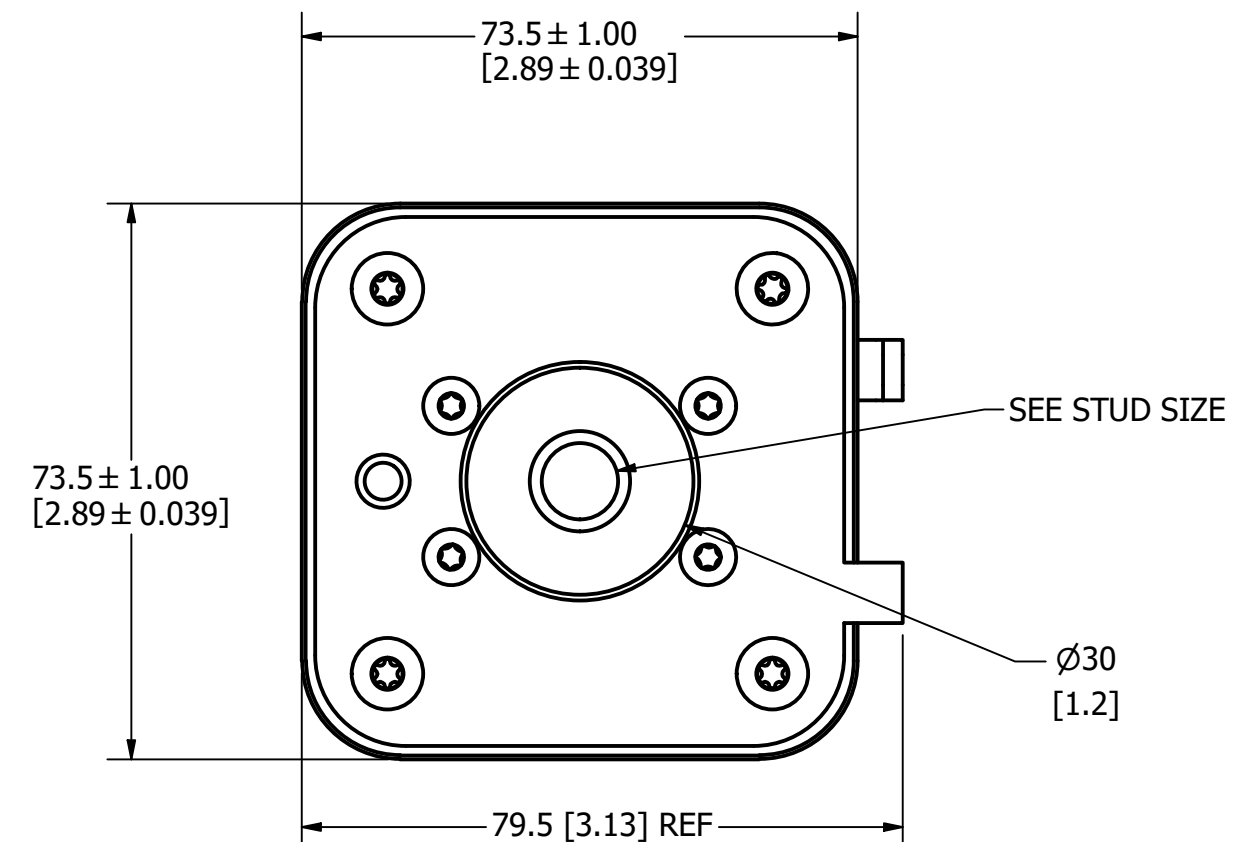
INTERNAL INDICATOR



VISUAL INDICATOR



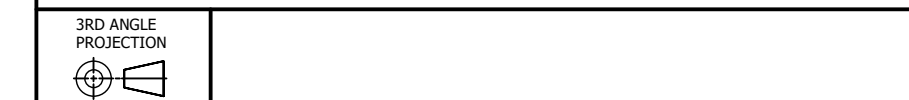
FUSE WITH MICRO-SWITCH



●	DENOTES CRITICAL CHARACTERISTICS.
CPK	DENOTES CPK DIMENSIONS, -MINIMUM CPK VALUE
(ST)	DENOTES A CHARACTERISTIC THAT PROVIDES AN INDICATION OF PROCESS PERFORMANCE. PROCEDURE FOR MEASUREMENT AND TRACKING TO BE DEFINED IN LITTELFUSE INSPECTION INSTRUCTIONS.
CP	DENOTES CP DIMENSIONS, -MINIMUM CP VALUE MUST BE WITHIN THE DIMENSIONAL LIMITATIONS SHOWN ON DRAWING AND INITIALLY LOCATED TO ALLOW FOR MAXIMUM TOOL LIFE.

MATL SPEC	FINISH
DRW TVESELSK	SCALE NTS
DATE 1/17/2024	FINISH GOOD WT GRAMS/PIECE

UNLESS OTHERWISE SPECIFIED, DIMENSIONS ARE IN MILLIMETERS, DIMENSIONS IN BRACKETS [] ARE INCHES DIMENSIONING AND DO NOT INCLUDE PLATING. TOLERANCING TO BE INTERPRETED IN ACCORDANCE WITH ANSI Y14.5M-1994



TITLE SQUARE BODY 33 CASE SIZE - METRIC THREAD OUTLINE

Littelfuse CHICAGO, ILLINOIS 60631	REVISION G	DRWG NO. OL-PSR033FL0000	SHEET 1 OF 1
--	------------	--------------------------	--------------

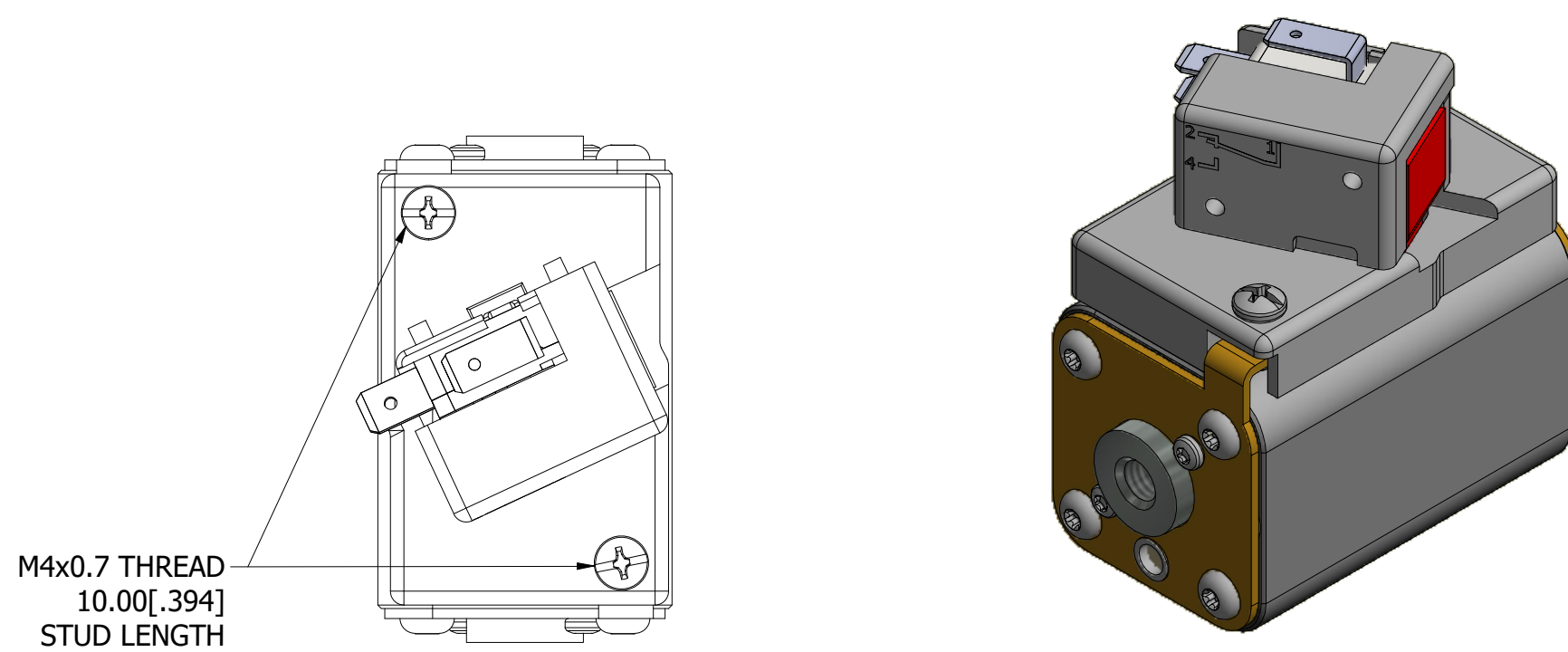
REVISION		
REV	DATE	DESCRIPTION
A	01/10/2019	518685GCP - RELEASED -TV
B	8/30/18	519782ECP/D - CHG STUD TORQUE MRY
C	5/5/22	525161ECP/D - CHANGE HEIGHT, ADD TOLERANCES MRY
D	5/19/22	525232ECP/D - UPDATE LENGTH DIMENSION MRY
E	7/14/22	525433ECP/D - CHANGE HEIGHT DIMENSION FORMAT MRY
F	10/24/23	526836ECP/D - ADD VIEW W/O MICROSWITCH MRY

MOUNTING SPECS

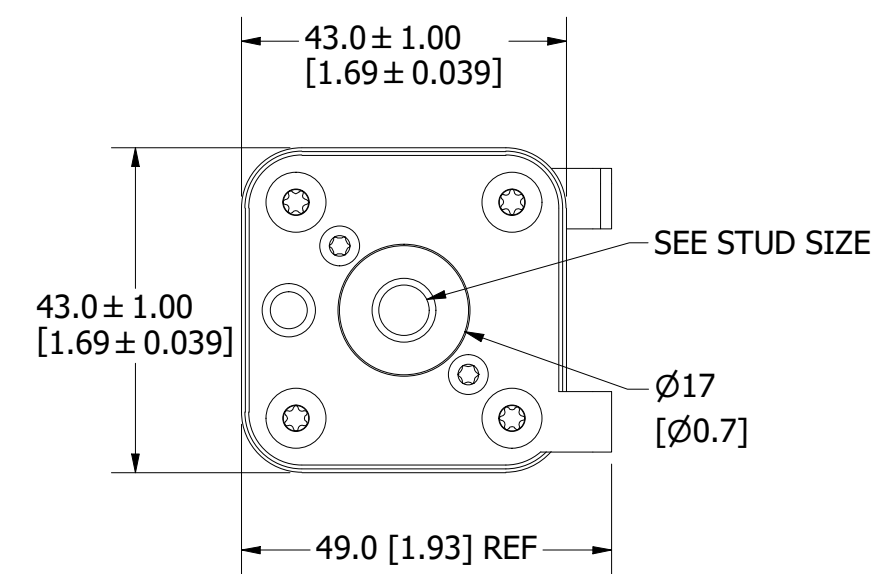
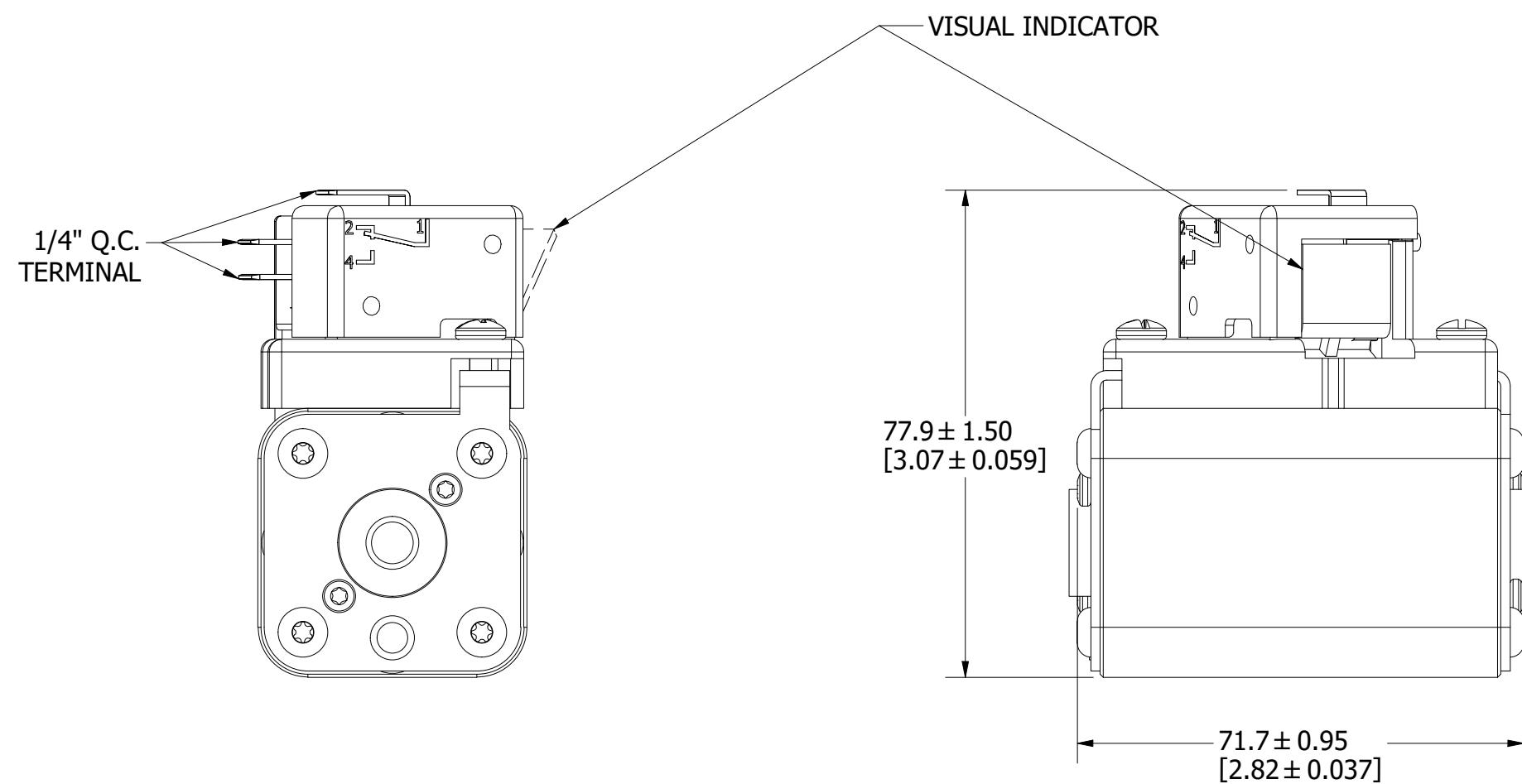
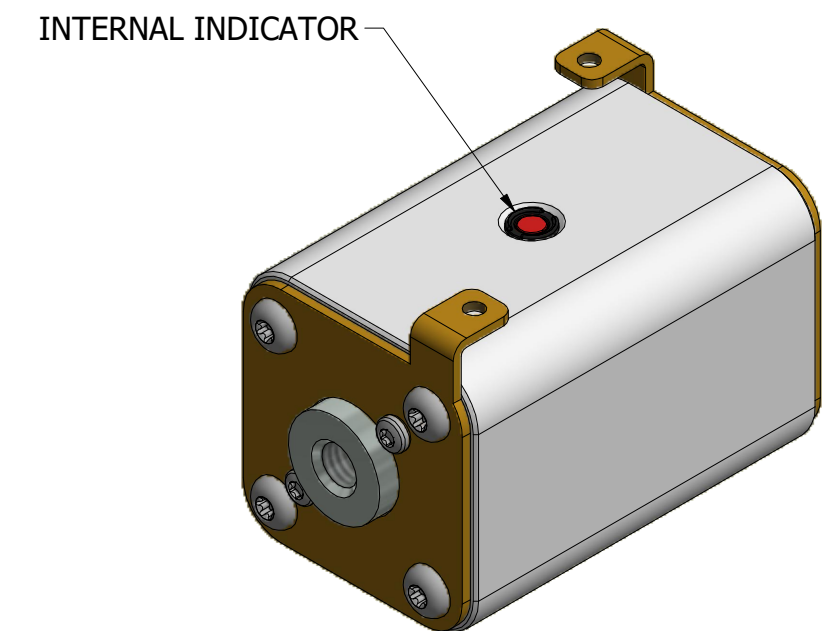
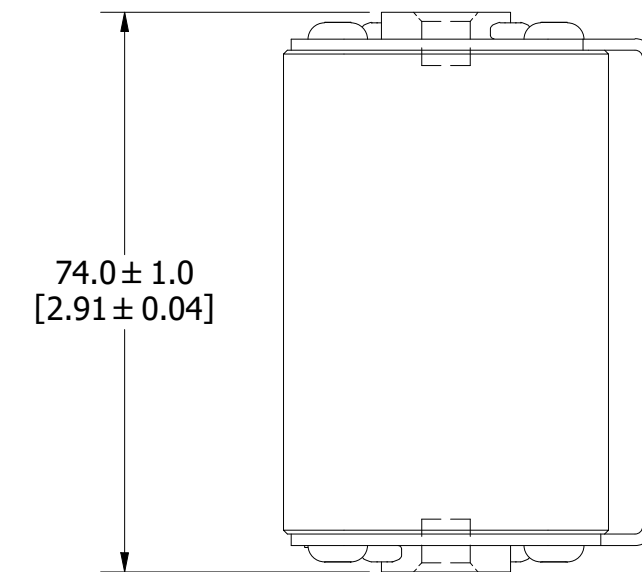
STUD SIZE: M8x1.25-6H ∇ 6.0 [0.24]

STUD TORQUE: 13-20Nm

FUSE WITH MICROSWITCH



FUSE



FUSE WITH MICROSWITCH

●	DENOTES CRITICAL CHARACTERISTICS.
CPK	DENOTES CPK DIMENSIONS, -MINIMUM CPK VALUE
(ST)	DENOTES A CHARACTERISTIC THAT PROVIDES AN INDICATION OF PROCESS PERFORMANCE. PROCEDURE FOR MEASUREMENT AND TRACKING TO BE DEFINED IN LITTELFUSE INSPECTION INSTRUCTIONS.
CP	DENOTES CP DIMENSIONS, -MINIMUM CP VALUE MUST BE WITHIN THE DIMENSIONAL LIMITATIONS SHOWN ON DRAWING AND INITIALLY LOCATED TO ALLOW FOR MAXIMUM TOOL LIFE.

MATL SPEC	FINISH		
DRW TVESELSK	DATE 11/6/2013	SCALE NTS	FINISH GOOD WT GRAMS/PIECE

UNLESS OTHERWISE SPECIFIED, DIMENSIONS ARE IN MILLIMETERS, DIMENSIONS IN BRACKETS [] ARE INCHES DIMENSIONING AND DO NOT INCLUDE PLATING. TOLERANCING TO BE INTERPRETED IN ACCORDANCE WITH ANSI Y14.5M-1994



TITLE SQUARE BODY 70 CASE SIZE - METRIC THREAD OUTLINE

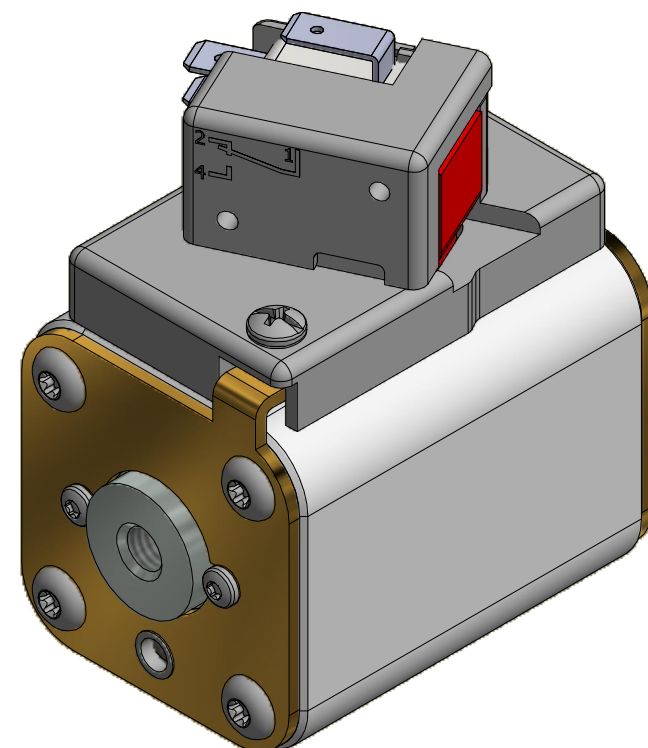
MOUNTING SPECS

STUD SIZE: M8x1.25 - 6H ∇ 8.0[0.31]

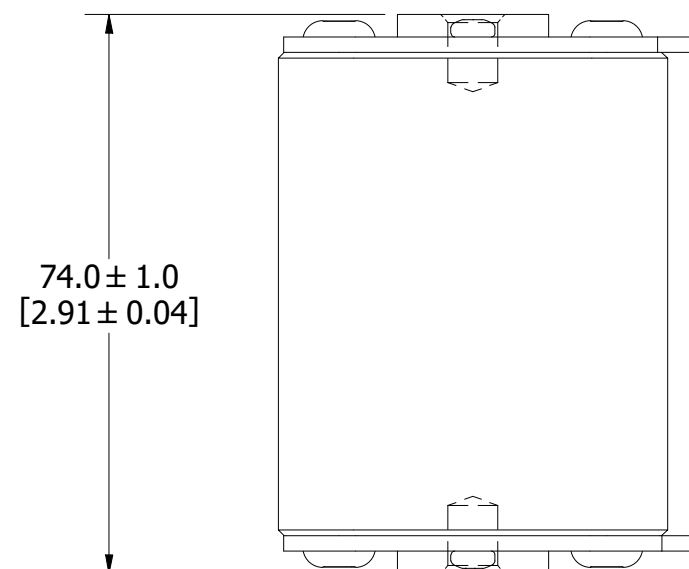
STUD TORQUE: 13-20Nm

REVISION		
REV	DATE	DESCRIPTION
A	03/16/2016	517373GCP - RELEASED -TV
B	10/19/2017	518344ECP - REVISE MOUNTING SPEC NOTES -TV
C	8/30/18	519782ECP/D - CHG STUD TORQUE MRY
D	5/5/22	525161ECP/D - CHANGE HEIGHT, ADD TOLERANCES MRY
E	5/19/22	525232ECP/D - UPDATE LENGTH DIMENSION MRY
F	7/14/22	525433ECP/D - CHANGE HEIGHT DIMENSION FORMAT MRY
G	10/24/23	526836ECP/D - ADD VIEW W/O MICROSWITCH MRY

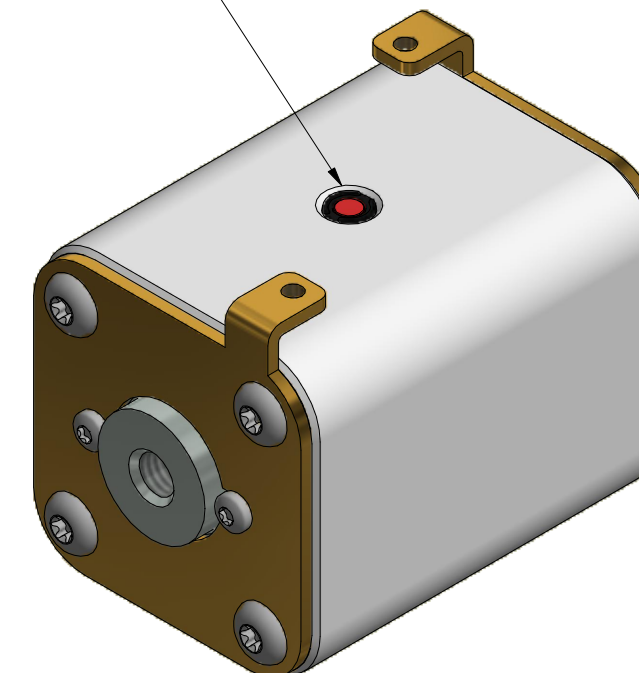
FUSE WITH MICROSWITCH



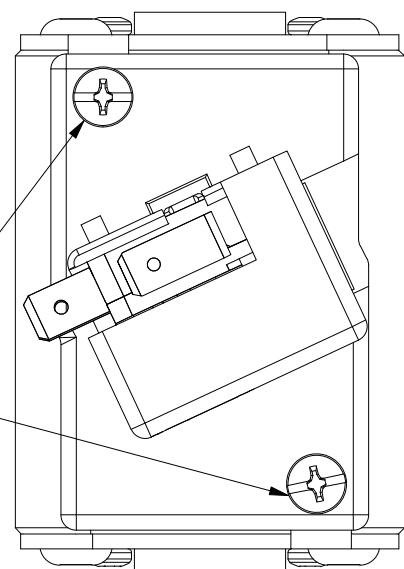
FUSE



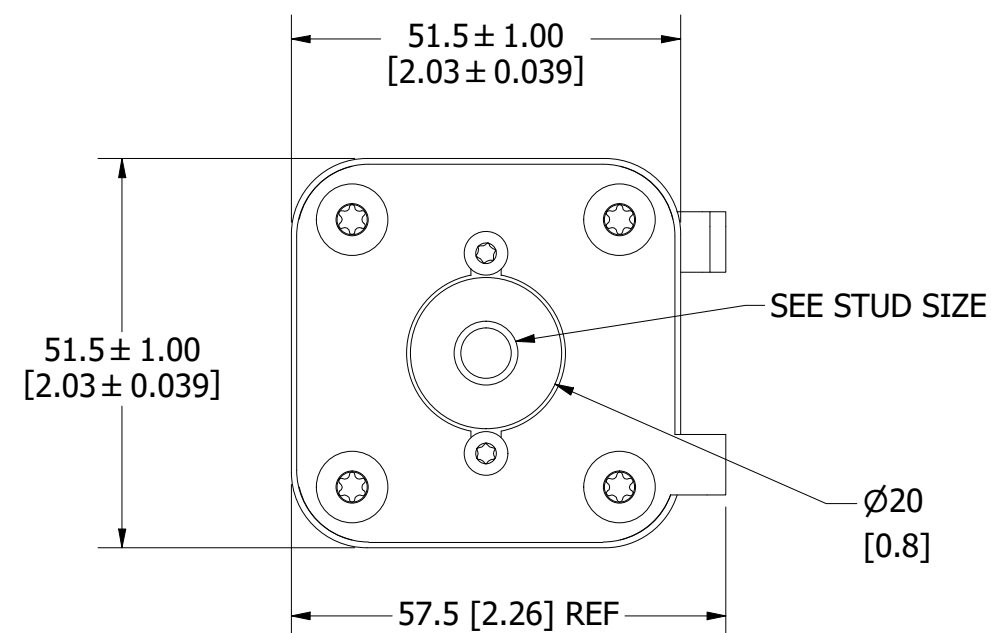
INTERNAL INDICATOR



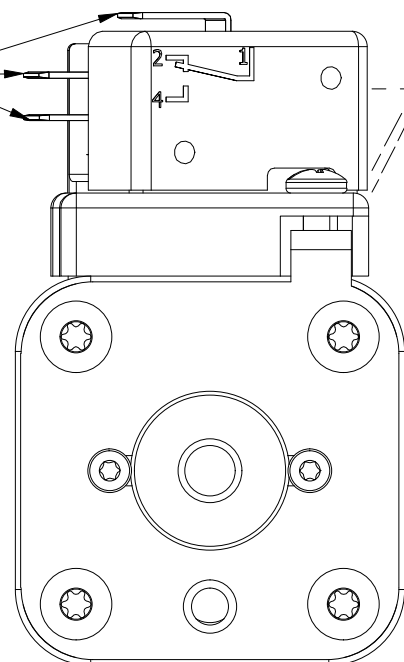
M4x0.7 THREAD
10.00[.394]
STUD LENGTH



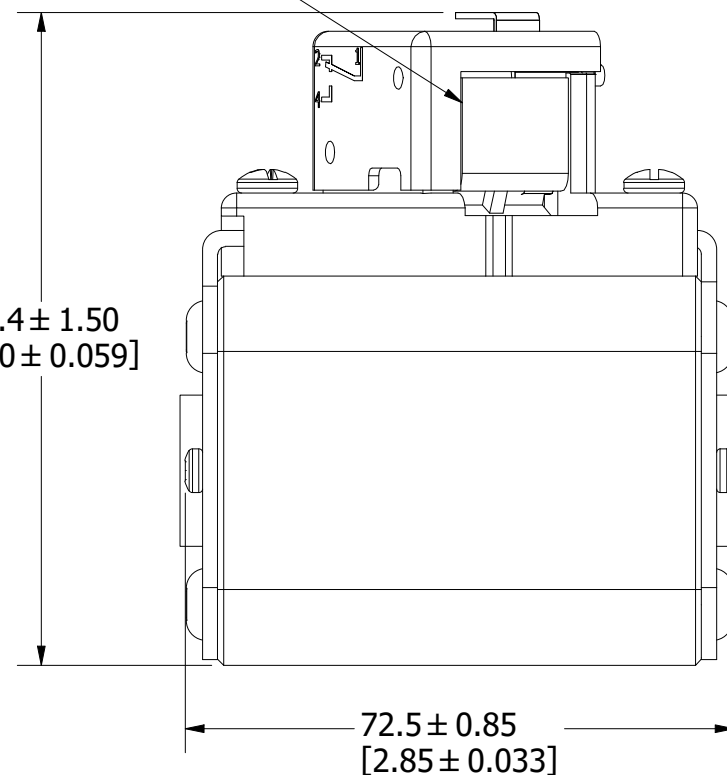
VISUAL INDICATOR



1/4" Q.C.
TERMINAL



86.4 ± 1.50
[3.40 ± 0.059]



FUSE WITH MICROSWITCH

●	DENOTES CRITICAL CHARACTERISTICS.
CPK	DENOTES CPK DIMENSIONS, -MINIMUM CPK VALUE
(ST)	DENOTES A CHARACTERISTIC THAT PROVIDES AN INDICATION OF PROCESS PERFORMANCE. PROCEDURE FOR MEASUREMENT AND TRACKING TO BE DEFINED IN LITTELFUSE INSPECTION INSTRUCTIONS.
CP	DENOTES CP DIMENSIONS, -MINIMUM CP VALUE MUST BE WITHIN THE DIMENSIONAL LIMITATIONS SHOWN ON DRAWING AND INITIALLY LOCATED TO ALLOW FOR MAXIMUM TOOL LIFE.

MATL SPEC	FINISH
-----------	--------

DRW TVESELSK	DATE 11/6/2013	SCALE NTS	FINISH GOOD WT GRAMS/PIECE
-----------------	-------------------	--------------	-------------------------------

UNLESS OTHERWISE SPECIFIED, DIMENSIONS ARE IN MILLIMETERS, DIMENSIONS IN BRACKETS [] ARE INCHES DIMENSIONING AND DO NOT INCLUDE PLATING. TOLERANCING TO BE INTERPRETED IN ACCORDANCE WITH ANSI Y14.5M-1994



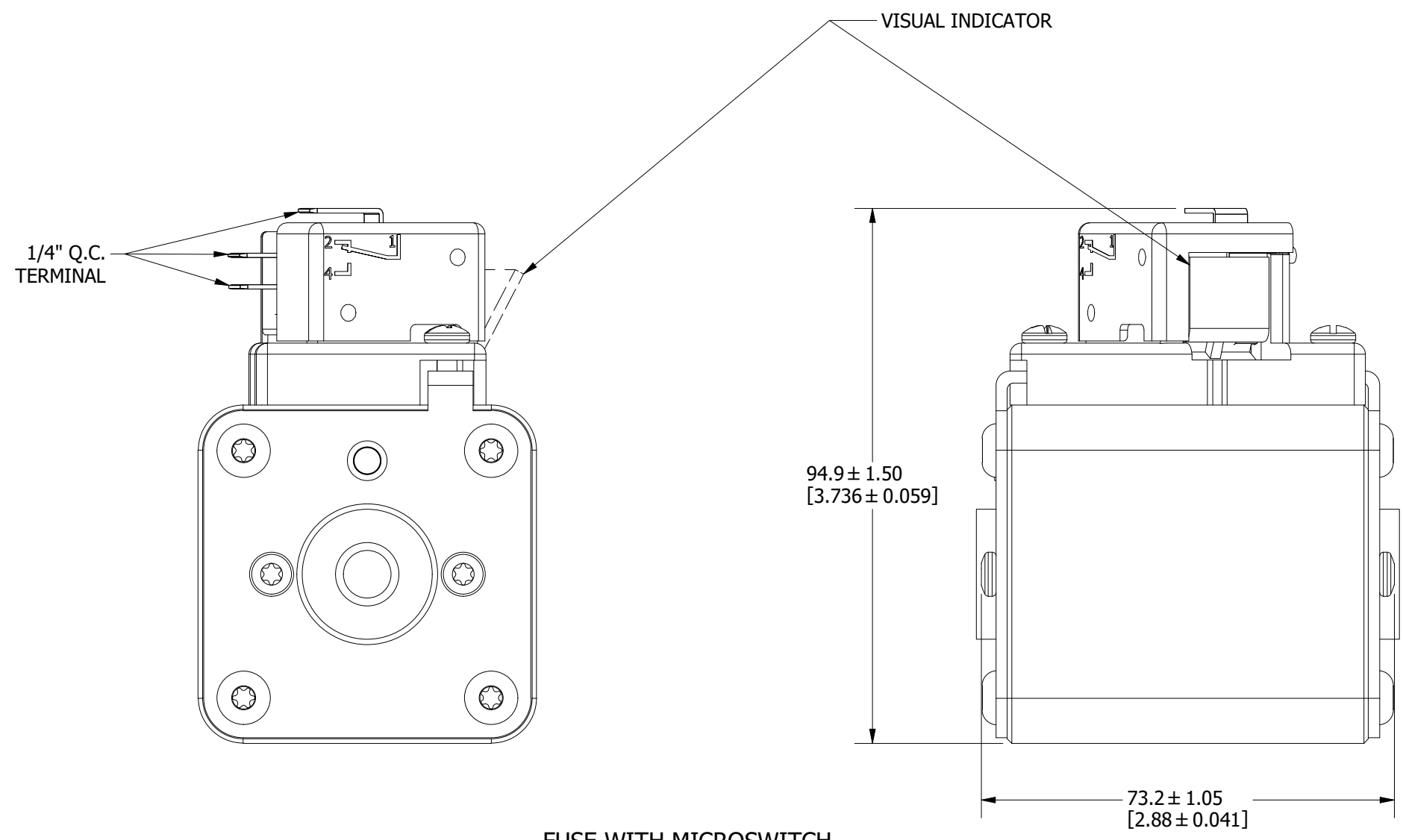
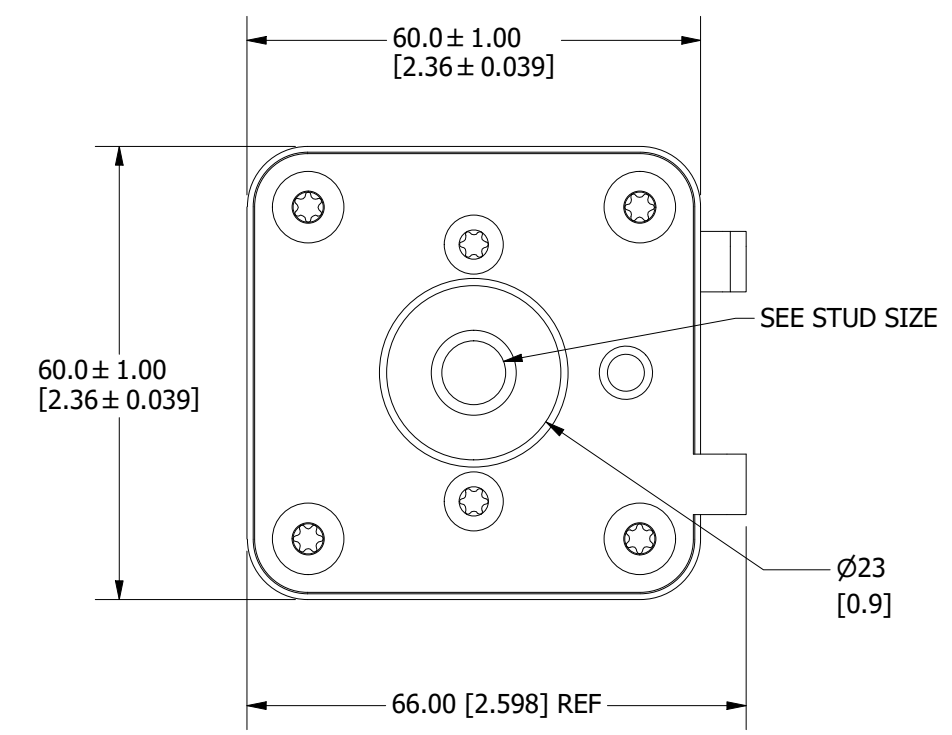
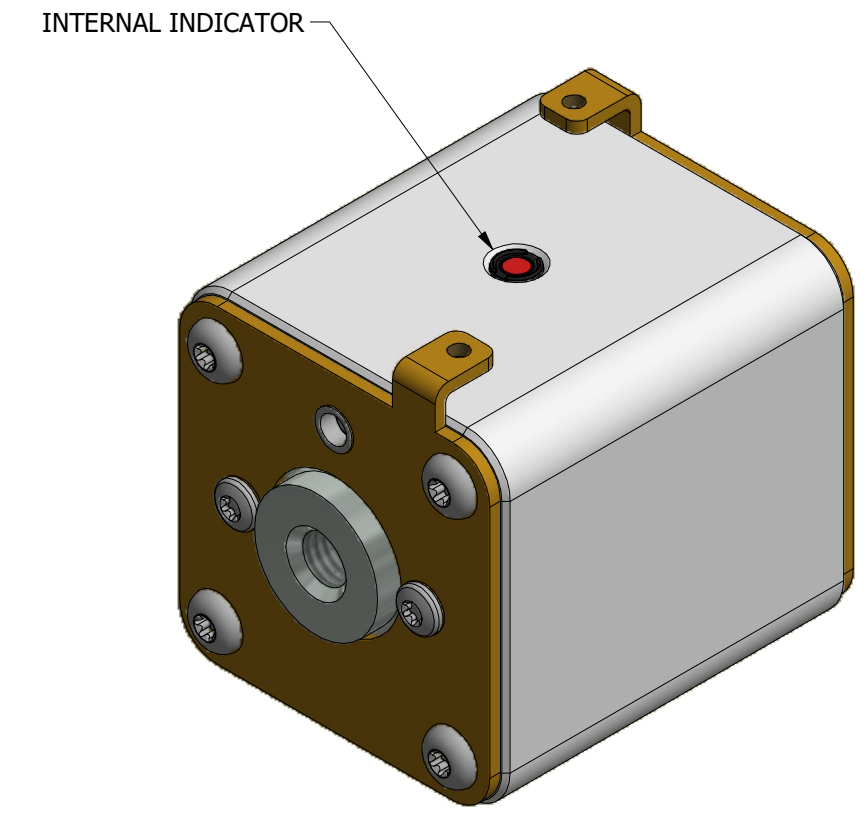
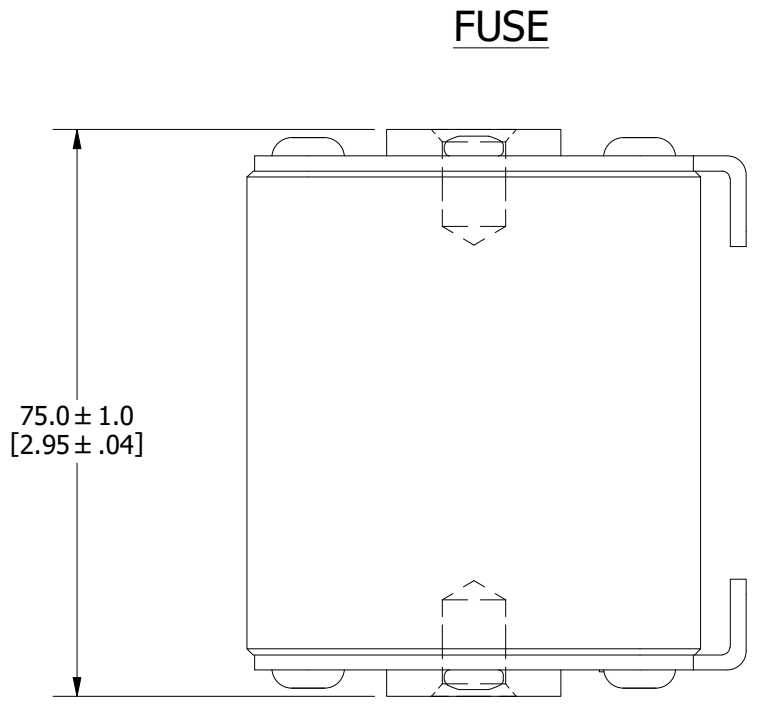
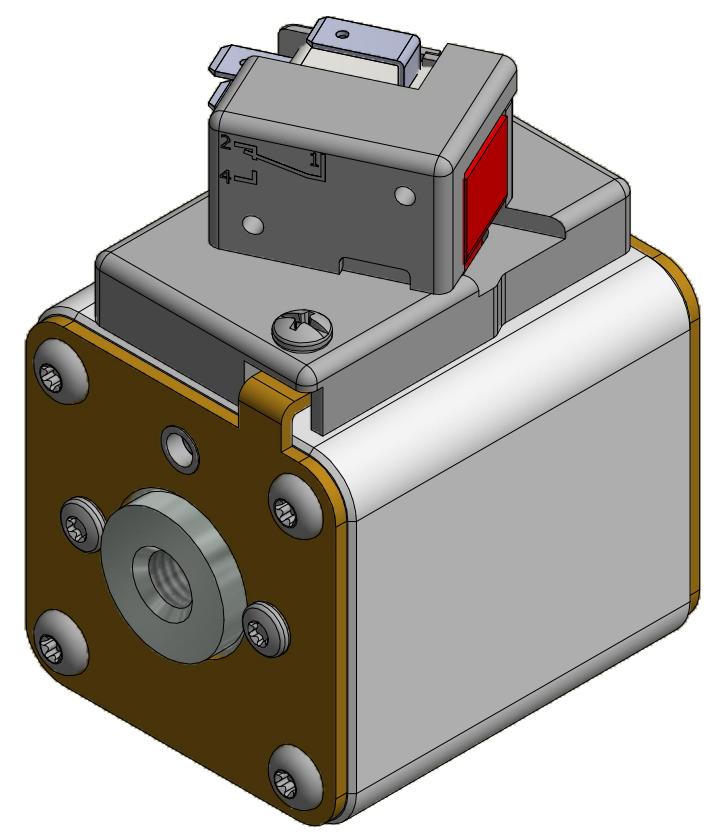
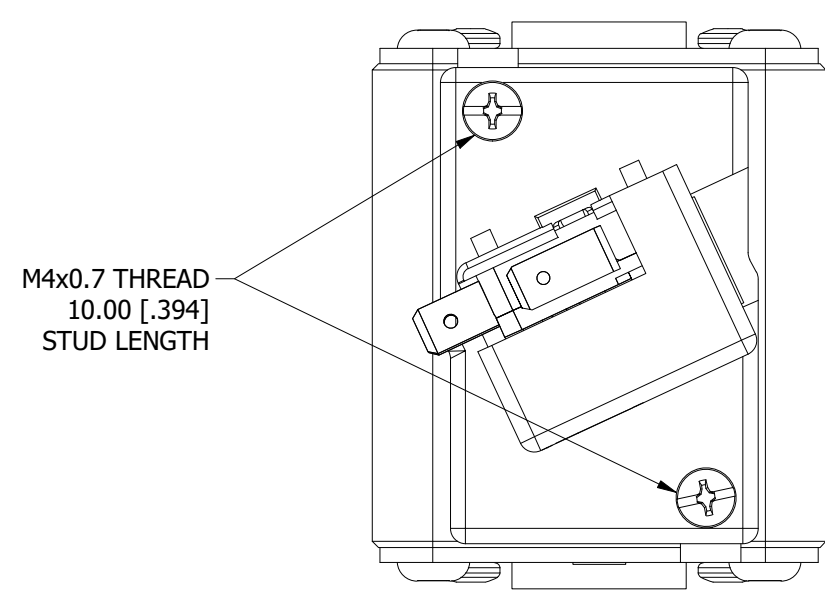
TITLE SQUARE BODY 71 CASE SIZE - METRIC THREAD OUTLINE

CHICAGO, ILLINOIS 60631	REVISION G	DRWG NO. OL-PSR071FL0000	SHEET 1 OF 1
-------------------------	---------------	-----------------------------	--------------

REVISION		
REV	DATE	DESCRIPTION
A	03/16/2016	517373GCP - RELEASED -TV
B	10/19/2017	518344ECP - REVISE STUD SIZE NOTES -TV
C	01/16/2018	518709ECP - CORRECT DIM -TV
D	8/30/18	519782ECP/D - CHG STUD TORQUE MRY
E	5/5/22	525161ECP/D - CHANGE HEIGHT, ADD TOLERANCES MRY
F	5/19/22	525232ECP/D - UPDATE LENGTH DIMENSION MRY
G	7/14/22	525433ECP/D - CHANGE HEIGHT DIMENSION FORMAT MRY
H	10/24/23	526836ECP/D - ADD VIEW W/O MICROSWITCH MRY

MOUNTING SPECS:
 STUD SIZE: M10x1.5-6H ∇ 11.5[0.45]
 STUD TORQUE: 26-35Nm

FUSE WITH MICROSWITCH



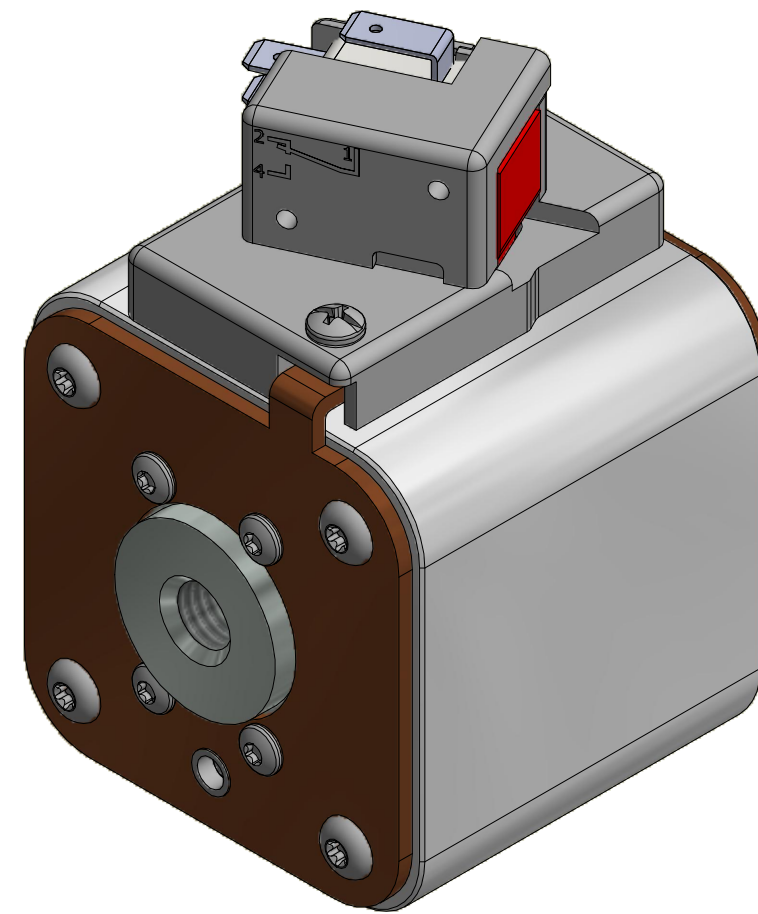
FUSE WITH MICROSWITCH

●	DENOTES CRITICAL CHARACTERISTICS.		
CPK	DENOTES CPK DIMENSIONS, -MINIMUM CPK VALUE		
(ST)	DENOTES A CHARACTERISTIC THAT PROVIDES AN INDICATION OF PROCESS PERFORMANCE. PROCEDURE FOR MEASUREMENT AND TRACKING TO BE DEFINED IN LITTELFUSE INSPECTION INSTRUCTIONS.		
CP	DENOTES CP DIMENSIONS, -MINIMUM CP VALUE MUST BE WITHIN THE DIMENSIONAL LIMITATIONS SHOWN ON DRAWING AND INITIALLY LOCATED TO ALLOW FOR MAXIMUM TOOL LIFE.		
MATL SPEC	FINISH		
DRW TVESELSK	DATE 2/15/2016	SCALE NTS	FINISH GOOD WT GRAMS/PIECE
UNLESS OTHERWISE SPECIFIED, DIMENSIONS ARE IN MILLIMETERS, DIMENSIONS IN BRACKETS [] ARE INCHES DIMENSIONING AND DO NOT INCLUDE PLATING. TOLERANCING TO BE INTERPRETED IN ACCORDANCE WITH ANSI Y14.5M-1994			
3RD ANGLE PROJECTION			
TITLE SQUARE BODY 72 CASE SIZE - METRIC THREAD OUTLINE			
Littelfuse® CHICAGO, ILLINOIS 60631		REVISION H	DRWG NO. OL-PSR072FL0000 SHEET 1 OF 1

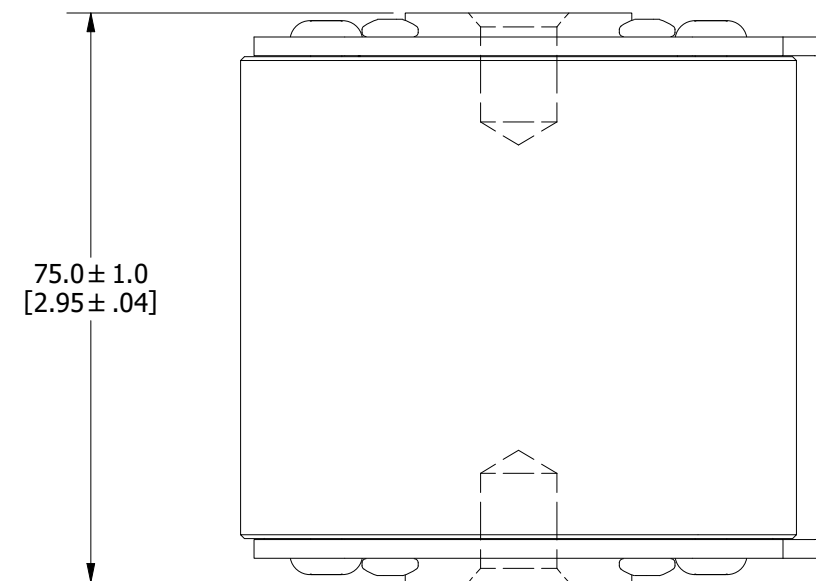
REVISION		DESCRIPTION
REV	DATE	
A	01/10/2018	518685GCP - RELEASED -TV
B	8/30/18	519782ECP/D - CHG STUD TORQUE MRY
C	5/5/22	525161ECP/D - CHANGE HEIGHT, ADD TOLERANCES MRY
D	5/19/22	525232ECP/D - UPDATE LENGTH DIMENSION MRY
E	7/14/22	525433ECP/D - CHANGE HEIGHT DIMENSION FORMAT MRY
F	10/24/23	526836ECP/D - ADD VIEW W/O MICROSWITCH MRY

MOUNTING SPECS:
 STUD SIZE: M12x1.75-6H ∇ 13.0 [0.51]
 STUD TORQUE: 45-55Nm

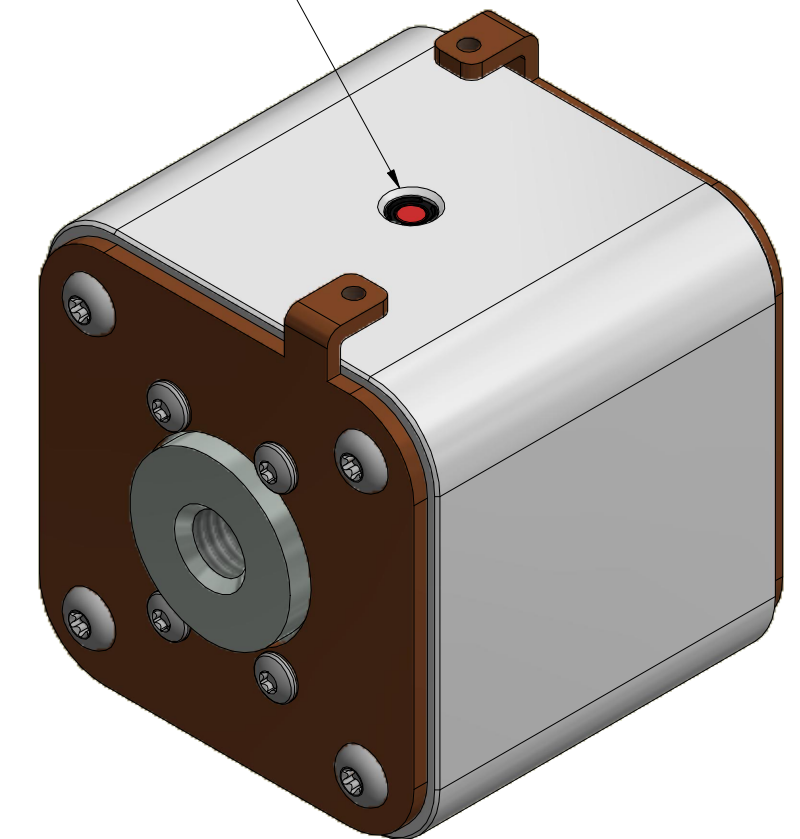
FUSE WITH MICROSWITCH



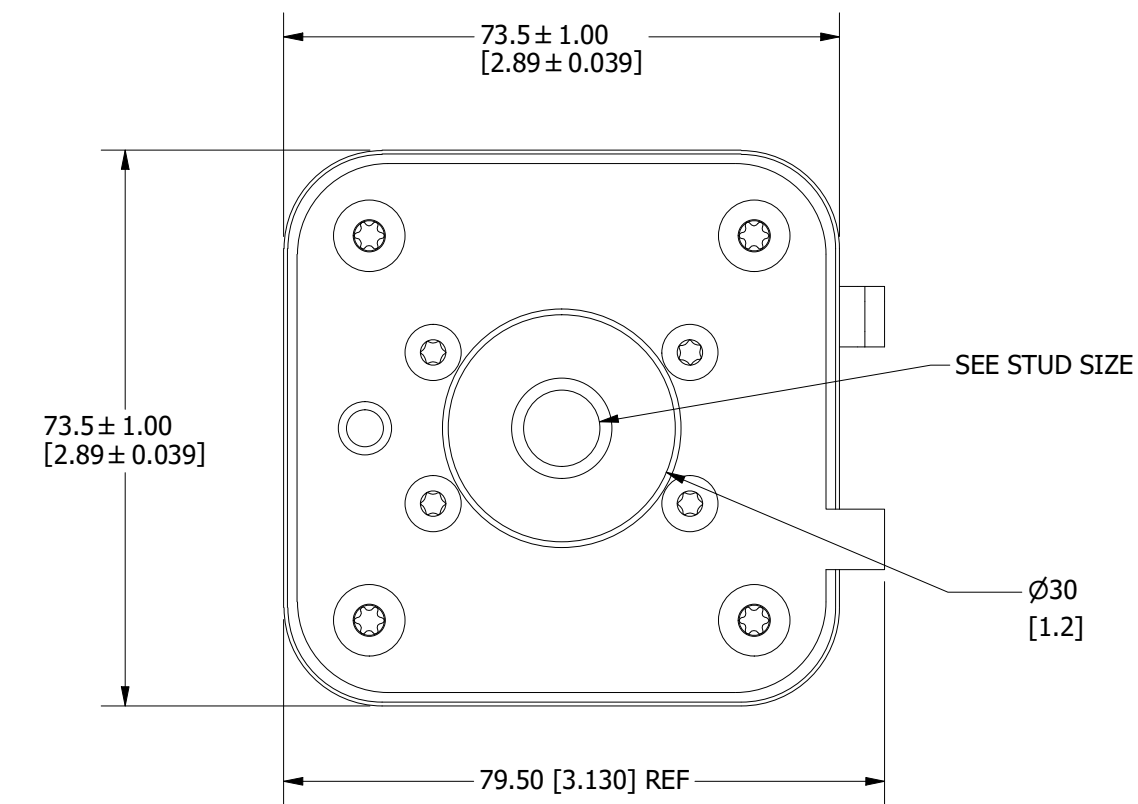
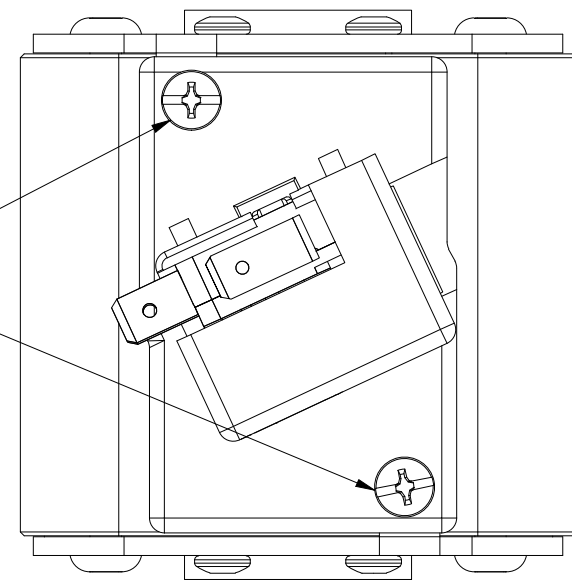
FUSE



INTERNAL INDICATOR

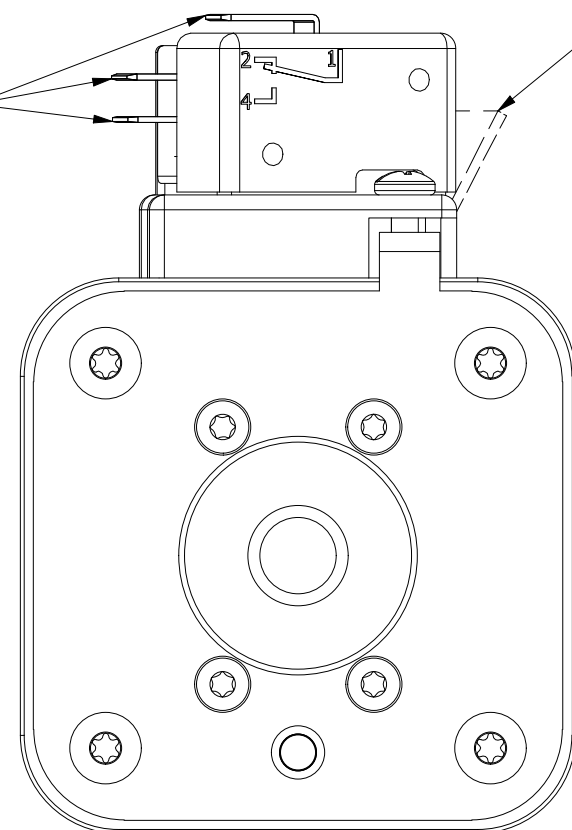


M4x0.7 THREAD
 10.00 [.394]
 STUD LENGTH

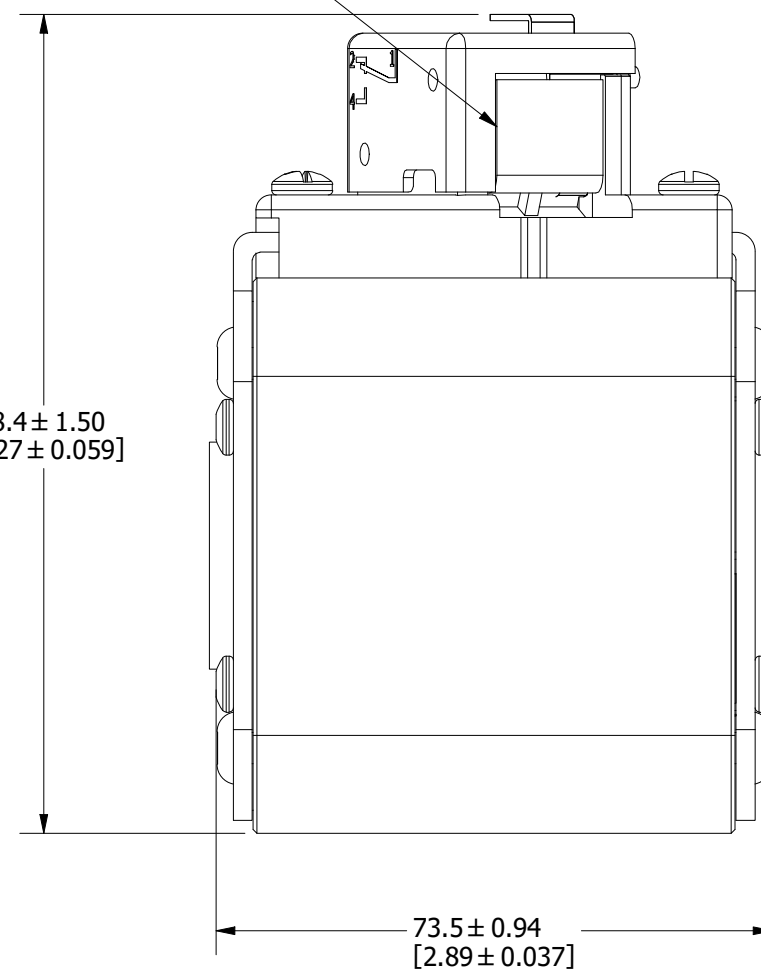


VISUAL INDICATOR

1/4" Q.C.
 TERMINAL



108.4 ± 1.50
 [4.27 ± 0.059]



FUSE WITH MICROSWITCH

●	DENOTES CRITICAL CHARACTERISTICS.
CPK	DENOTES CPK DIMENSIONS, -MINIMUM CPK VALUE
ST	DENOTES A CHARACTERISTIC THAT PROVIDES AN INDICATION OF PROCESS PERFORMANCE. PROCEDURE FOR MEASUREMENT AND TRACKING TO BE DEFINED IN LITTELFUSE INSPECTION INSTRUCTIONS.
CP	DENOTES CP DIMENSIONS, -MINIMUM CP VALUE MUST BE WITHIN THE DIMENSIONAL LIMITATIONS SHOWN ON DRAWING AND INITIALLY LOCATED TO ALLOW FOR MAXIMUM TOOL LIFE.

MATL SPEC	FINISH
DRW TVESELSK	DATE 2/4/2016
SCALE NTS	FINISH GOOD WT GRAMS/PIECE

UNLESS OTHERWISE SPECIFIED, DIMENSIONS ARE IN MILLIMETERS, DIMENSIONS IN BRACKETS [] ARE INCHES DIMENSIONING AND DO NOT INCLUDE PLATING. TOLERANCING TO BE INTERPRETED IN ACCORDANCE WITH ANSI Y14.5M-1994



TITLE SQUARE BODY 73 CASE - METRIC THREAD OUTLINE