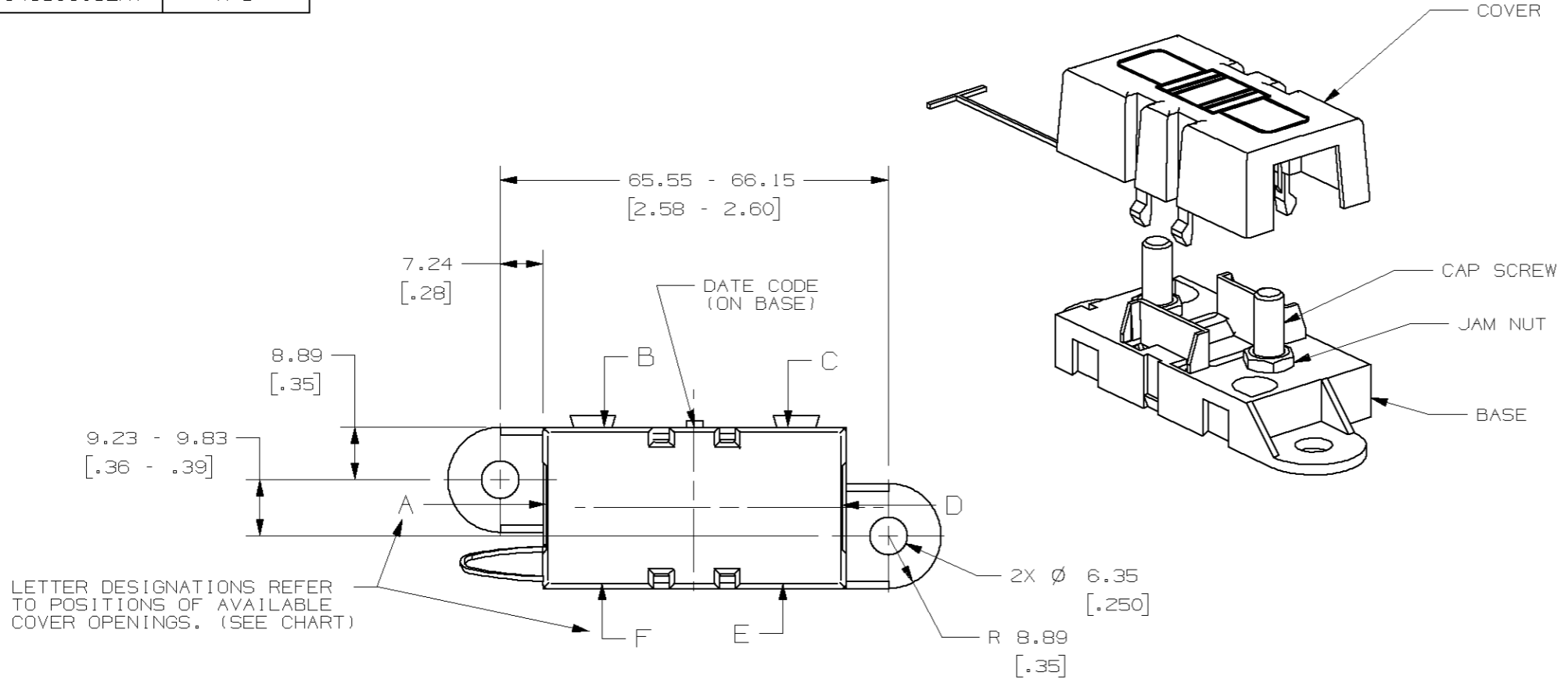
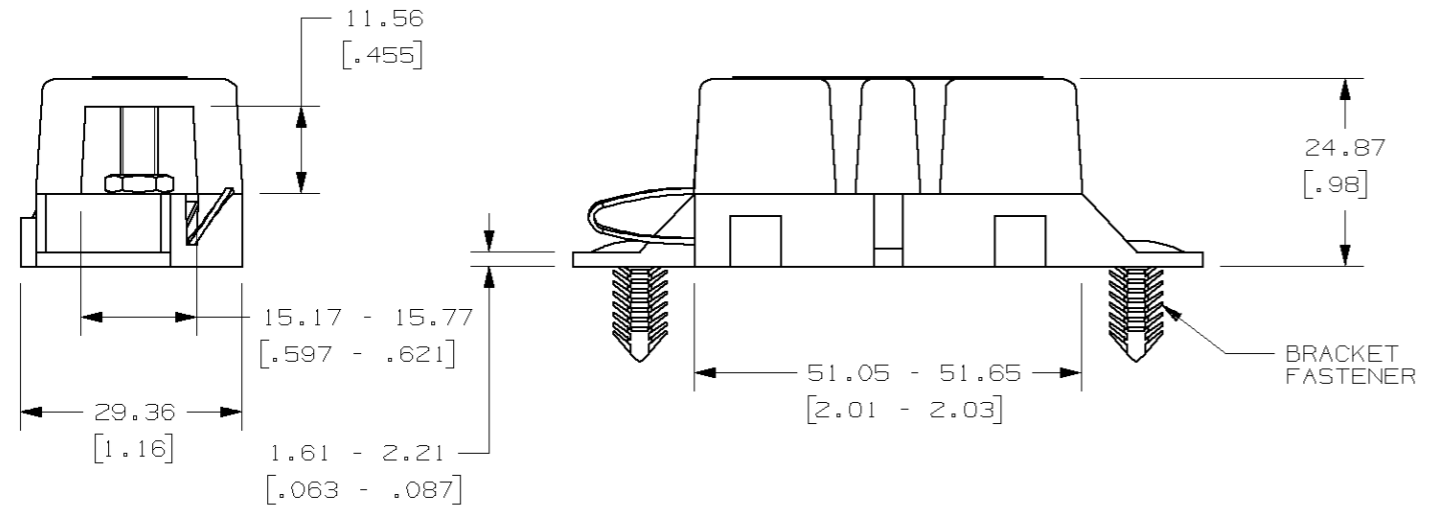


PART NUMBER	COVER OPENINGS
04980913ZXT	A D



LETTER DESIGNATIONS REFER TO POSITIONS OF AVAILABLE COVER OPENINGS. (SEE CHART)



NOTES:

- TAB OF COVER TIE IS INSERTED INTO HOLE IN BASE.
- TORQUE REQUIRED FOR TOP NUT (NOT SHOWN) TO BE 4.0 - 5.0 NEWTON METERS (35-44 IN-LBS).
- CAP SCREW AND JAM NUT - M5 X 0.8 STEEL, ZINC PLATE WITH TRIVALENT CHROMATE, LEACHED AND SEALED, INTEGRAL TORQUE CONTROL LUBRICANT FINISH. (MEETS 96 HR. ASTM STD. B-117 SALT SPRAY REQ.).
- HOLDER MEETS L/F VALIDATION TEST SPEC. VS-005004.

METRIC

UNLESS OTHERWISE SPECIFIED, DIMENSIONS ARE IN MILLIMETERS. DIMENSIONS IN BRACKETS [] ARE INCHES
 UNLESS OTHERWISE SPECIFIED, DIMENSIONS DO NOT INCLUDE PLATING.
 © DENOTES CRITICAL CHARACTERISTICS.
 CPK DENOTES CPK DIMENSIONS, -MINIMUM CPK VALUE
 (ST) DENOTES A CHARACTERISTIC THAT PROVIDES AN INDICATION OF PROCESS PERFORMANCE. PROCEDURE FOR MEASUREMENT AND TRACKING TO BE DEFINED IN LITTELFUSE INSPECTION INSTRUCTIONS
 CP DENOTES CP DIMENSIONS, -MINIMUM CP VALUE MUST BE WITHIN THE DIMENSIONAL LIMITATIONS SHOWN ON DRAWING AND INITIALLY LOCATED TO ALLOW FOR MAXIMUM TOOL LIFE

NO COMPONENT NO		DESCRIPTION	QTY/M	U/M
BILL OF MATERIAL				
MATERIAL SPEC		FINISH		
COPIES TO	18	DATE	05/25/05	SCALE
1	9	CHK		SUPER DR
2	10	APPD		FINISH GOOD WT
3	12	GRAMS/PIECE		
4	13	TOLERANCE UNLESS OTHERWISE SPECIFIED		
5	14	ONE PLACE DEC +/- .25		
6	15	THREE PLACE DEC +/- .100		
7	16	ANGULAR +/- 1°		
8	17	3RD ANGLE PROJECTION		
18	18	TITLE		
19	19	MIDI FUSE HOLDER		
20	20	WITH WIDE OPENINGS		
21	21	REVISION		
22	22	DRWG. NO.		
23	23	OUTLINE		
24	24	04980913ZXT		
25	25	DES PLAINES, ILLINOIS 60016		