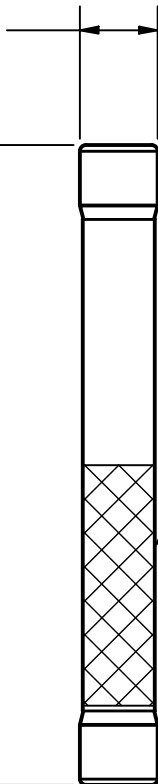


$\varnothing 10.31 \begin{matrix} +0.36 \\ -0.10 \end{matrix}$
 $[0.406 \begin{matrix} +0.014 \\ -0.004 \end{matrix}]$

84.65 ± 0.89
 $[3.333 \pm 0.035]$



LABEL LOCATION

REVISION		
REV	DATE	DESCRIPTION
A	9/10/19	521205GCP - RELEASE MRY
B	11/2/22	525830ECP/D - ADD LABEL LOCATION MRY

<S>	CRITICAL CHARACTERISTIC FOR PART SAFETY/COMPLIANCE
●	DENOTES CRITICAL CHARACTERISTICS.
CPK	DENOTES CPK DIMENSIONS, -MINIMUM CPK VALUE
ST	DENOTES A CHARACTERISTIC THAT PROVIDES AN INDICATION OF PROCESS PERFORMANCE. PROCEDURE FOR MEASUREMENT AND TRACKING TO BE DEFINED IN LITTELFUSE INSPECTION INSTRUCTIONS.
CP	DENOTES CP DIMENSIONS, -MINIMUM CP VALUE MUST BE WITHIN THE DIMENSIONAL LIMITATIONS SHOWN ON DRAWING AND INITIALLY LOCATED TO ALLOW FOR MAXIMUM TOOL LIFE.

A

MATL SPEC		FINISH	
DRW myork	DATE 8/12/2019	SCALE NTS	FINISH GOOD WT GRAMS/PIECE

UNLESS OTHERWISE SPECIFIED, DIMENSIONS ARE IN MILLIMETERS, DIMENSIONS IN BRACKETS [] ARE INCHES DIMENSIONING AND DO NOT INCLUDE PLATING. TOLERANCING TO BE INTERPRETED IN ACCORDANCE WITH ANSI Y14.5M-1994

3RD ANGLE
PROJECTION



TITLE

SPXV-M SERIES OUTLINE


Littelfuse[®]
 CHICAGO, ILLINOIS 60631

REVISION

B

DRWG NO.

OL-SPXV000M

SHEET 1 OF 1