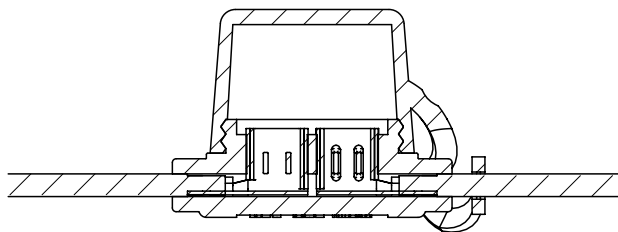
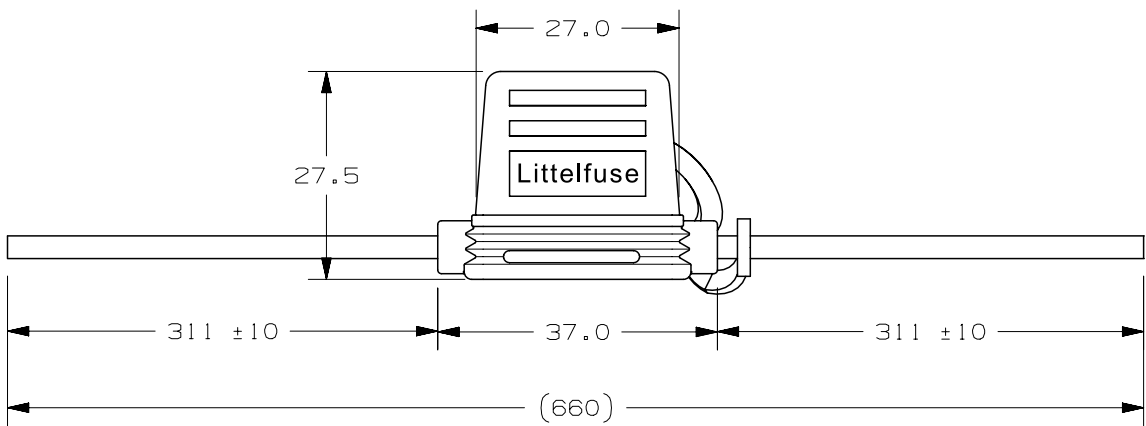
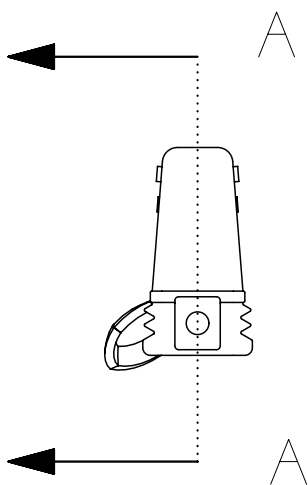
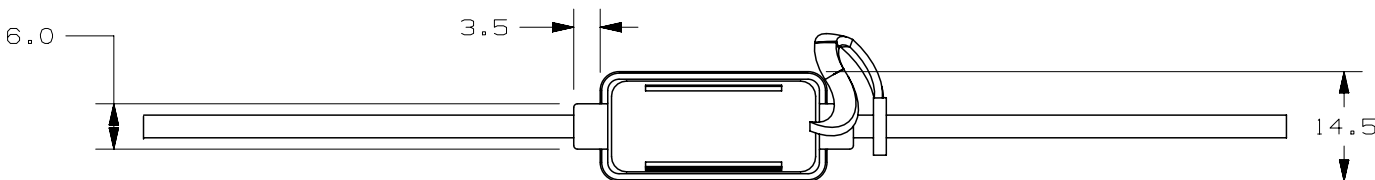


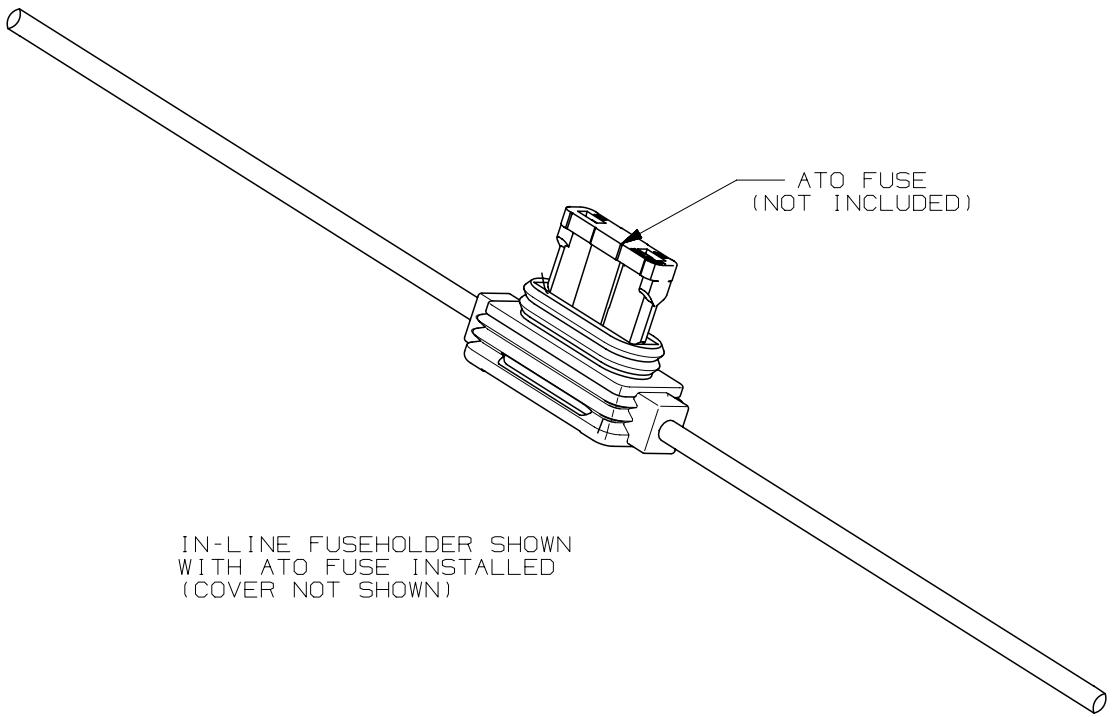
LTR	DATE	REVISION	CHK	APD
A	12/03/13	509876ERA-NEW RELEASED FYUE		
B	11/Jul/18	516095ECA-REMOVE SUPPLIER MATERIAL MODEL NUMBER FYUE		

INSPECTION NOTES:
1. INSPECT STRIPPED WIRE FOR CUT STRANDS (CONFORMS WITH IPC-A-610 STD.)
2. NO DAMAGE TO WIRE INSULATION
3. NO SHORT SHOTS ON MOLDING
4. FLASH OR GATING NOT TO EXCEED 0.13

NOTES:
1. HOLDER MATERIAL: BLACK TPV
2. CONTACTS: C2680 BRASS TIN-PLATED
3. WIRE: PE-X FLR2X-B YELLOW DIN72551 SEC. 2.5mm²
4. CRIMP: MUST MEET SAE/USCAR 21 STANDARD
5. RATING: MAX. 25A, 32Vdc
6. TEMPERATURE RANGE: -40° C TO 125° C
7. MAX CONTACT TEMPERATURE: 95° C
8. WEIGHT: 28 GRAMS
9. SHIPPED WITH COVER IN OPEN POSITION




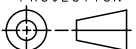



SECTION A - A



IN-LINE FUSEHOLDER SHOWN WITH ATO FUSE INSTALLED (COVER NOT SHOWN)

METRIC
ASSEMBLY

UNLESS OTHERWISE SPECIFIED, DIMENSIONS ARE IN MILLIMETERS. DIMENSIONS IN BRACKETS [] ARE INCHES			
UNLESS OTHERWISE SPECIFIED, DIMENSIONS DO NOT INCLUDE PLATING.			
	DENOTES CRITICAL CHARACTERISTICS.		
CPK	DENOTES CPK DIMENSIONS, -MINIMUM CPK VALUE		
	DENOTES A CHARACTERISTIC THAT PROVIDES AN INDICATION OF PROCESS PERFORMANCE. PROCEDURE FOR MEASUREMENT AND TRACKING TO BE DEFINED IN LITTELFUSE INSPECTION INSTRUCTIONS		
CP	DENOTES CP DIMENSIONS, -MINIMUM CP VALUE MUST BE WITHIN THE DIMENSIONAL LIMITATIONS SHOWN ON DRAWING AND INITIALLY LOCATED TO ALLOW FOR MAXIMUM TOOL LIFE		
COPIES TO		MATL SPEC	
		SEE NOTES	
1 9 18	FINISH		
2 10 19	SEE NOTES		
3 12 20			
4 13 21	DRW FYUE	DATE 11/28/13	SCALE 1:1
5 14 23	CHK	DATE	SUPER DR
6 15 33	APPD	DATE	FINISH GOOD WT
7 16 43	GRAMS/PIECE		
8 17 53			
TOLERANCE UNLESS OTHERWISE SPECIFIED			
ONE PLACE DEC +/- .3		THREE PLACE DEC +/- .100	
TWO PLACE DEC +/- .25		ANGULAR +/- 1°	
3RD ANGLE PROJECTION	TITLE		
	ATO IN-LINE FUSEHOLDER		
		REVISION B	DRWG. NO. SFHA0001ZXJ OUTLINE
DES PLAINES, ILLINOIS 60016			

CAD GENERATED DRAWING - NO PENCIL CHANGES ALLOWED