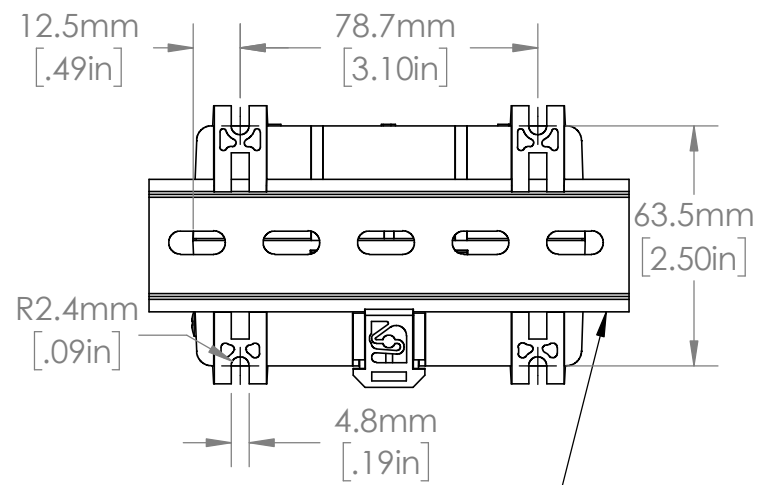
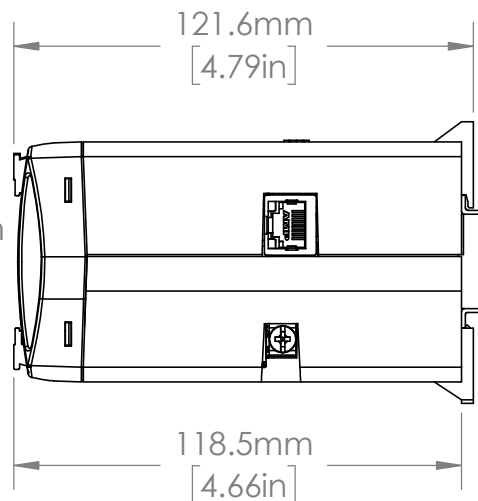
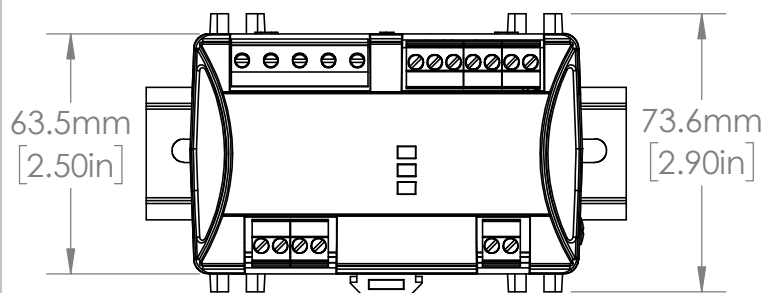
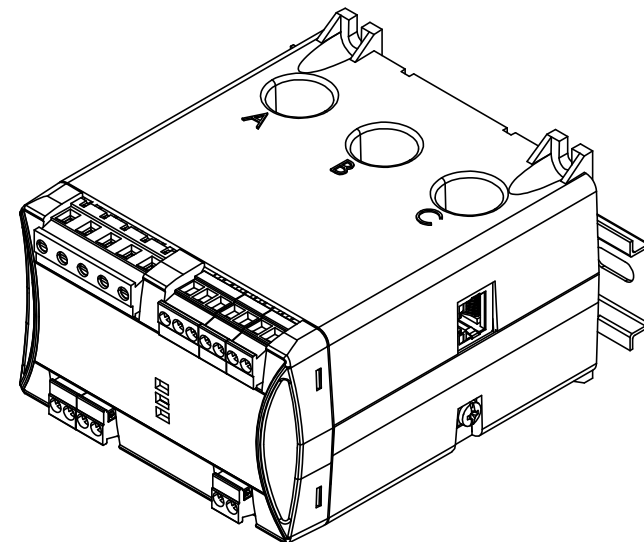
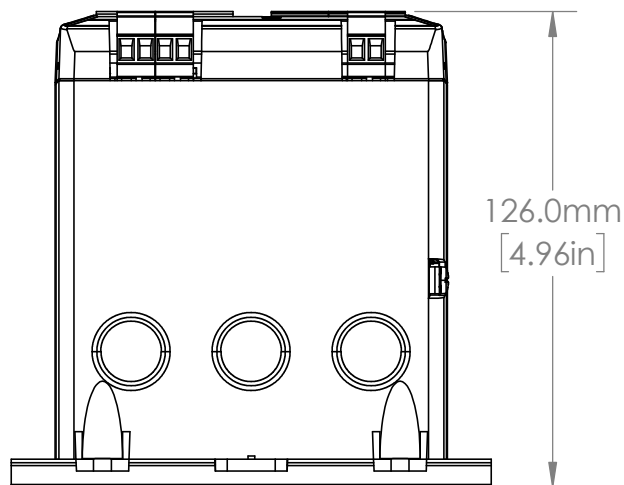


R8.0mm
[.31in]



EN550022 (35.0 x 7.5 mm)
DIN RAIL SHOWN



126.0mm
[4.96in]

UNLESS NOTED OTHERWISE
DIMENSIONS ARE IN INCHES
TOLERANCES:
TWO PLACE DECIMAL ±0.01
NOT DRAWN TO SCALE



MATERIAL	
NAME	DATE
DRAWN BY J.MOLER	7/28/22



DESCRIPTION:
STANDARD MOTOR PROTECTION

PART NUMBER:
MP8000 SERIES

REV
A

WEIGHT:

SHEET 1 OF 1