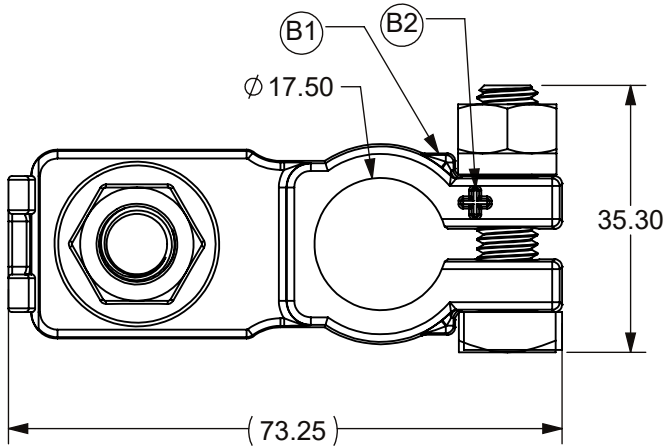


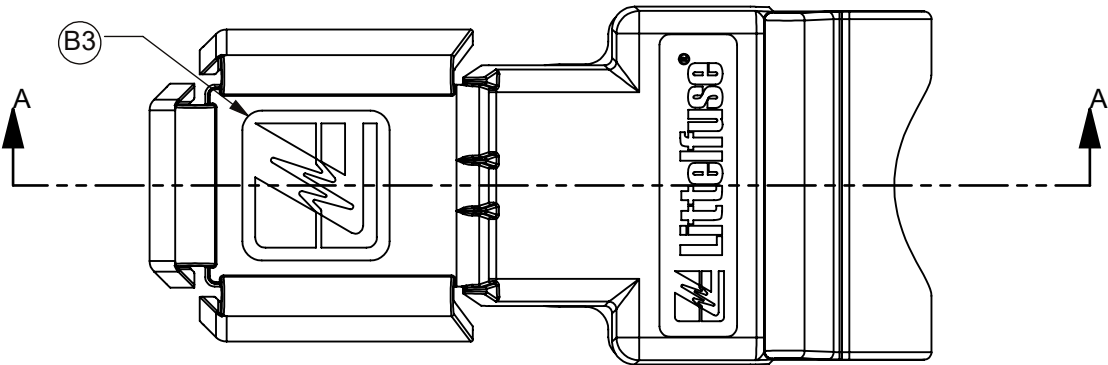
THIS DRAWING AND THE INFORMATION CONTAINED WITHIN IT ARE CONFIDENTIAL AND MAY NOT BE COPIED OR DISCLOSED WITHOUT THE WRITTEN PERMISSION OF LITTELFUSE.

NOTES

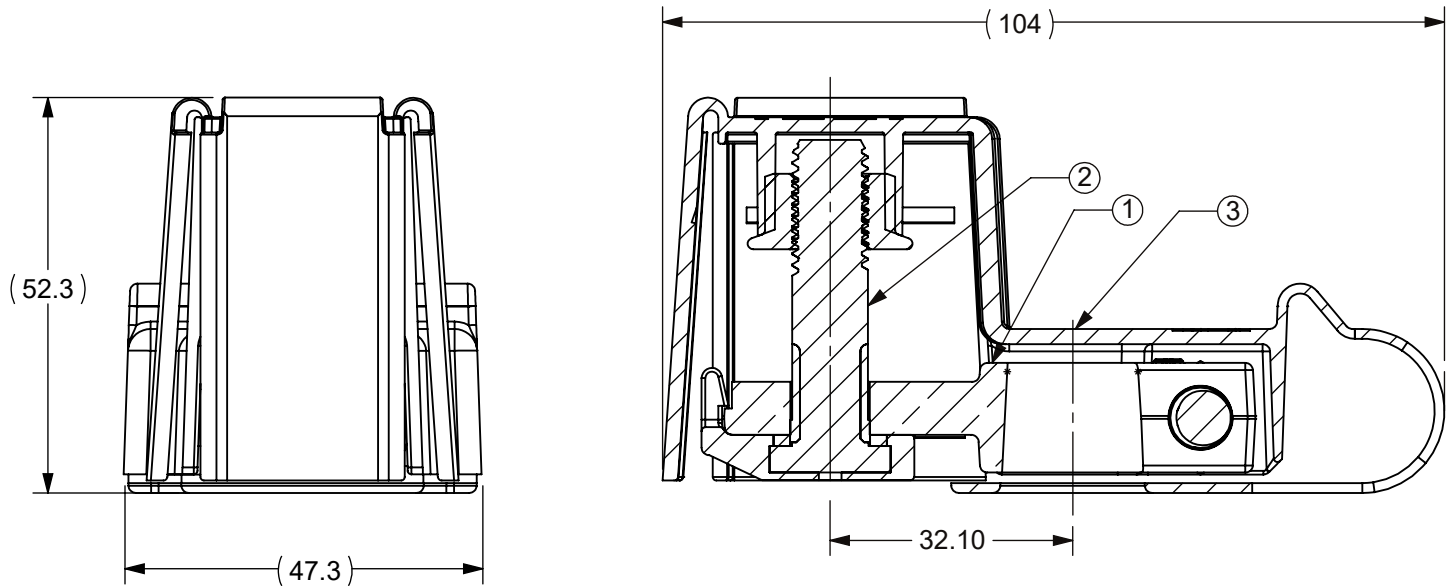
1. MATERIAL:
BASE: COPPER ALLOY PLATED WITH TIN OVER NICKEL
BOLTS AND NUTS: 304 STAINLESS STEEL
COVER: TPV; UL94, V0 RATED
BMZS MUST BE USED WITH LITTELFUSE SUPPLIED
2. M10 INSULATED BOLT ONLY (908-082)
M10 BOLT TORQUE: 16±2 N·m
3. M8 SHOULDER NUT TORQUE: 12±1 N·m
4. MAXIMUM CONTINUOUS CURRENT: 250 A
5. VOLTAGE RATING: 80 V
6. OPERATING TEMPERATURE: -40°C TO 105°C
7. STORAGE TEMPERATURE: -50°C TO 125°C



SHOWN WITHOUT COVER
FOR REFERENCE

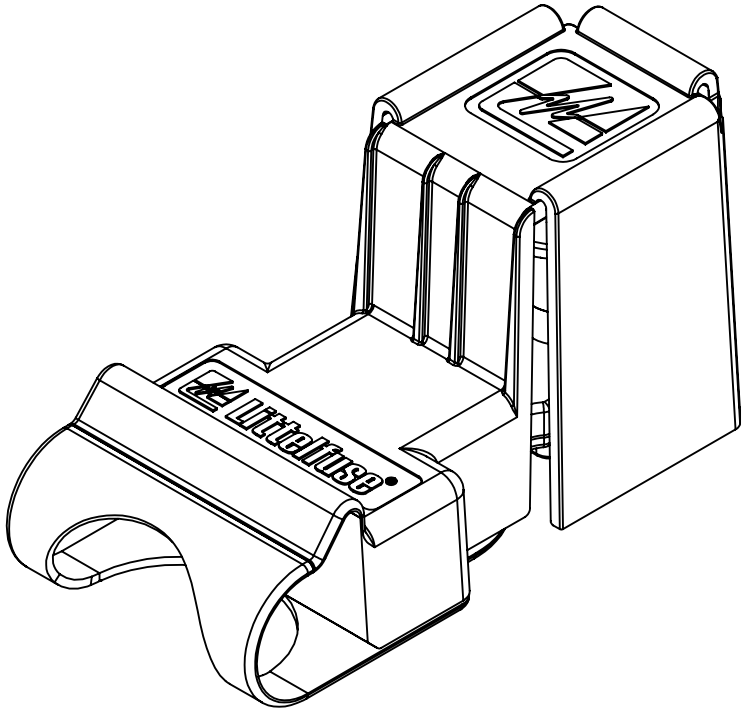


SECTION A-A



REVISIONS


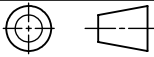
ZONE	REV.	DESCRIPTION	DATE	APPROVED
	A	INITIAL RELEASE, GCF#524040	10/21/21	R. OLSZEWSKI
	B	ECO-100086 1. NEW ANTIROTATIONAL FEATURE; 2. NEW PLUS SIGN; 3. NEW LOGO; CHANGED NAME FROM BMZF TO BMZS B.CARR	2/23/22	R. OLSZEWSKI



ITEM NO.	PART NUMBER	DESCRIPTION	QTY.
1	890011630	1 Position Base	1
2	908-082	M10 Insulated Stud	1
3	901-731	Cover, 1 Position BMZS	1

DIMENSIONS ARE SHOWN IN MILLIMETERS. DIMENSIONS AND TOLERANCES ARE DEFINED ACCORDING TO ANSI/ASME Y14.5-1994.

●	FIT/ FUNCTION CRITICAL CHARACTERISTICS
<S>	SAFETY/ COMPLIANCE CRITICAL CHARACTERISTICS SYMBOL
CPK	DENOTES CPK DIMENSIONS MINIMUM CPK VALUE
ST	DENOTES A CHARACTERISTIC THAT PROVIDES AN INDICATION OF PROCESS PERFORMANCE.PROCEDURE FOR MEASUREMENTAND TRACKINGTO BE DEFINED IN LITTELFUSE INSPECTION INSTRUCTIONS
CP	DENOTES CP DIMENSIONS. -MINIMUM CP VALUE MUST BE WITHIN THE DIMENSIONAL LIMITATIONS SHOWN ON DRAWING AND INITIALLY LOCATED TO ALLOW FOR MAXIMUM TOOL LIFE

NAME		DATE		<div></div> <div>Littelfuse®</div> <div>Expertise Applied Answers Delivered</div>			
DRAWN	B.CARR	9/27/2021					
CHECKED	S.CASTILLO	10/21/2021					
	-	-					
	-			TITLE BMZS STUDDED 1 POS KIT BULK			
FORM NO: CVP-PE40-0003 REV B							
THIRD ANGLE PROJECTION							
<div></div>							
DO NOT SCALE DRAWING				SIZE B	DWG. NO. OUTLINE	OL-FHZ00861	REV. B
SCALE 1:1						SHEET 1 OF 1	