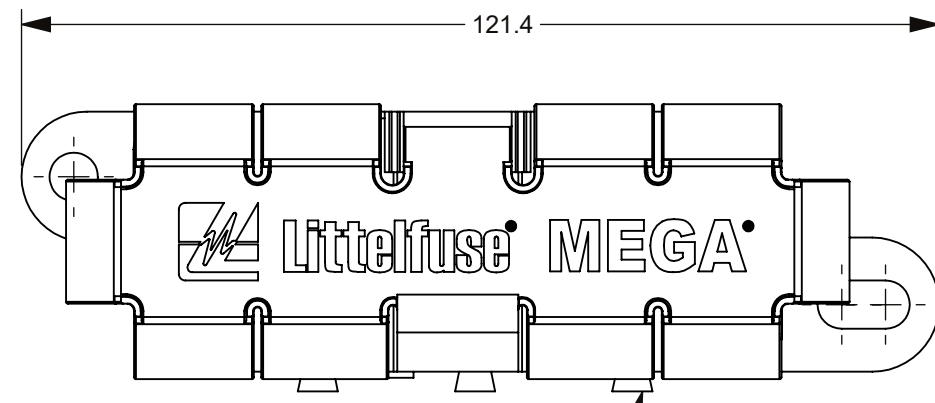
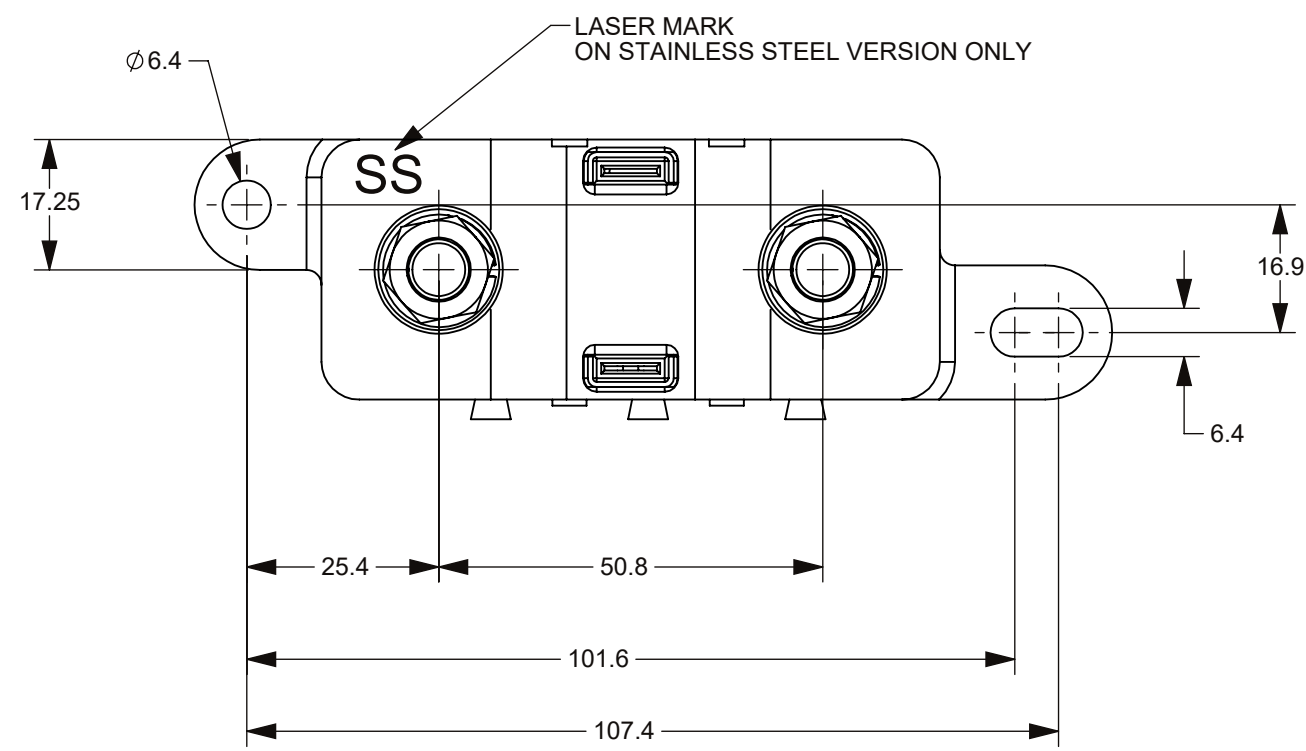
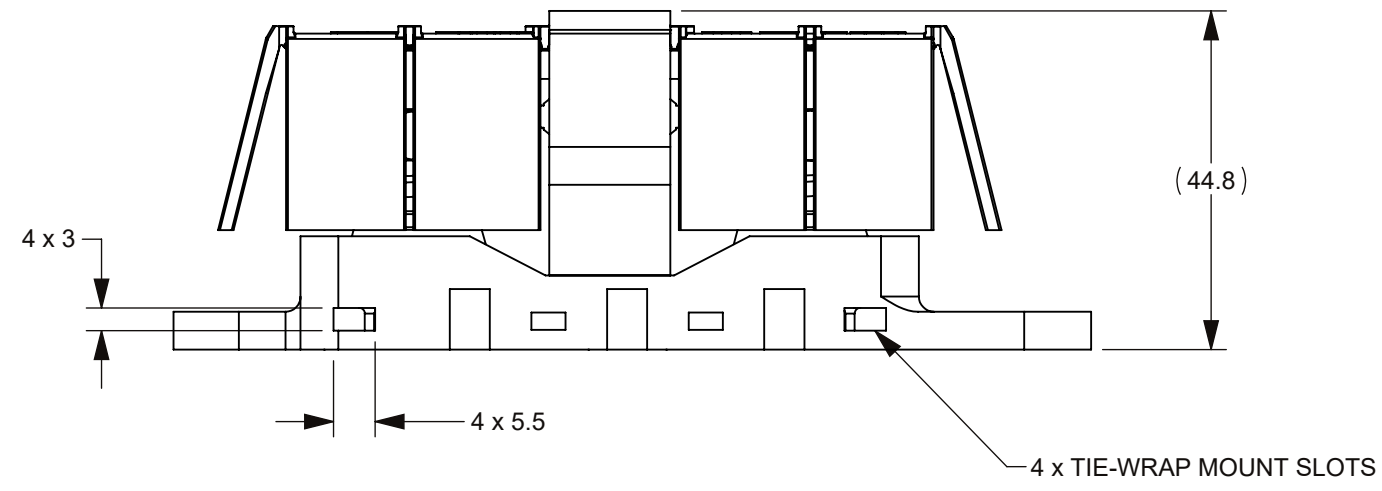
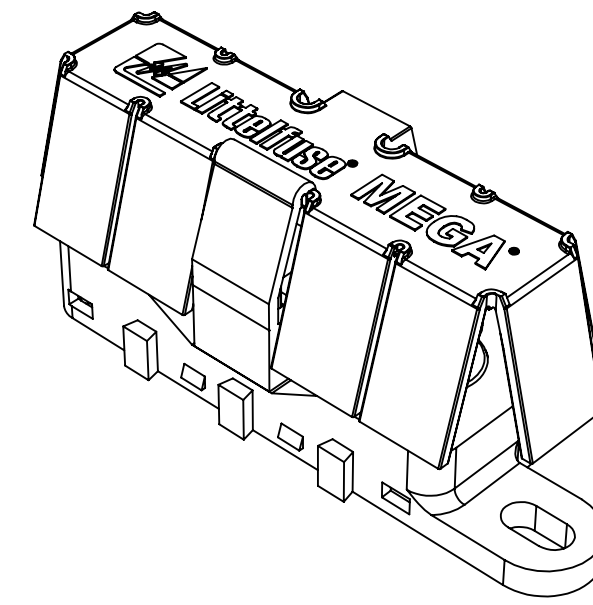


THIS DRAWING AND THE INFORMATION CONTAINED WITHIN IT ARE CONFIDENTIAL AND MAY NOT BE COPIED OR DISCLOSED WITHOUT THE WRITTEN PERMISSION OF LITTELFUSE.

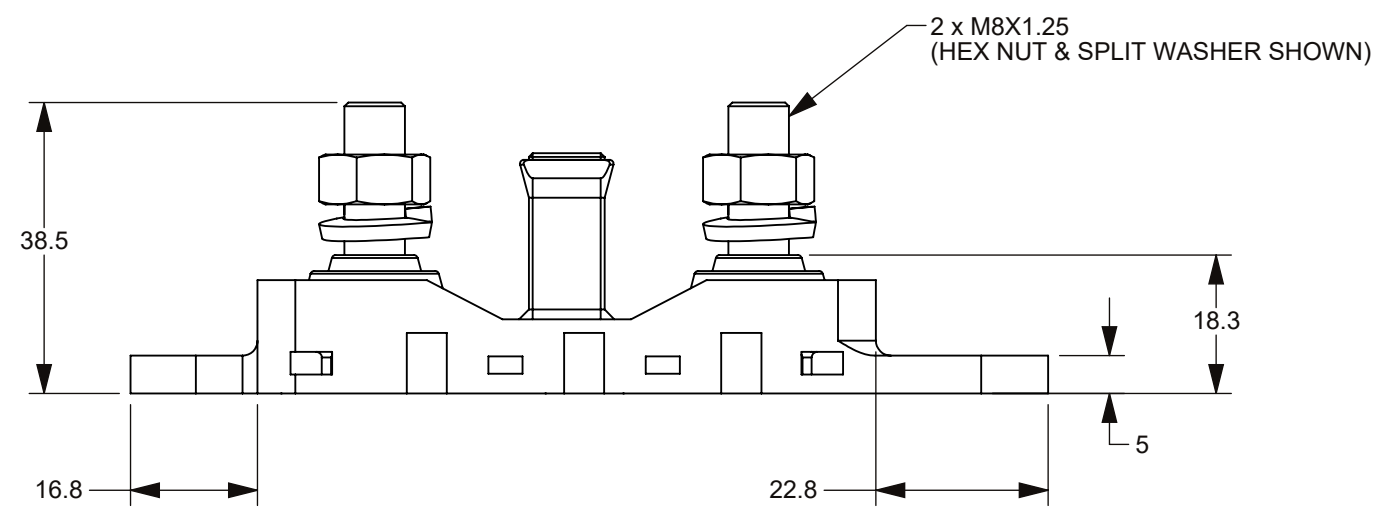
REVISIONS				
ZONE	REV.	DESCRIPTION	DATE	APPROVED
	A	510069ERA - RELEASE FYUE	02/07/2014	
	B	ECR #522133 STUD AND HARDWARE MATERIAL CHANGE FROM ZINC-PLATED STEEL TO STAINLESS STEEL JLI	03/25/2020	



DOVETAIL FEATURES USED TO INTERLOCK MULTIPLE HOLDERS



- NOTES:
- 1) BASE: UL94V-0 GLASS-FILLED PPA, BLACK
M8 STUDS: STAINLESS STEEL
HEX NUTS & SPLIT WASHERS: STAINLESS STEEL
COVER: UL94V-0 ELASTOMER, RED
 - 2) MAX FUSE RATING: 500A
 - 3) M8 STUD TORQUE: 25Nm MINIMUM
MOUNTING TORQUE (W/ M6 BOLTS & WASHERS): 5Nm
 - 4) TEMPERATURE RATING: -40 °C TO 125 °C
 - 5) WIRE SIZE: 8mm² TO 30mm²



DIMENSIONS ARE SHOWN IN MILLIMETERS. DIMENSIONS AND TOLERANCES ARE DEFINED ACCORDING TO ANSI/ASME Y14.5-1994.			
●	FIT FUNCTION CRITICAL CHARACTERISTICS SYMBOL		
<S>	SAFETY/ COMPLIANCE CRITICAL CHARACTERISTICS SYMBOL		
CPK	DENOTES CPK DIMENSIONS MINIMUM CPK VALUE		
(ST)	DENOTES A CHARACTERISTIC THAT PROVIDES AN INDICATION OF PROCESS PERFORMANCE PROCEDURE FOR MEASUREMENT AND TRACKING TO BE DEFINED IN LITTELFUSE INSPECTION INSTRUCTIONS		
CP	DENOTES CP DIMENSIONS - MINIMUM CP VALUE MUST BE WITHIN THE DIMENSIONAL LIMITATIONS SHOWN ON DRAWING AND INITIALLY LOCATED TO ALLOW FOR MAXIMUM TOOL LIFE		
DIMENSION: MM TOLERANCES UNLESS OTHERWISE SPECIFIED			
ONE PLACE DECIMAL ± 0.5		THREE PLACES DECIMAL ± 0.100	
TWO PLACES DECIMAL ± 0.20		ANGULAR ± 2°	
DRAWN	NAME	DATE	<p>Littelfuse Expertise Applied Answers Delivered</p>
CHECKED	FYUE	02/07/2014	
FORM NO: CVP-PE40-0006 REV A		TITLE	
THIRD ANGLE PROJECTION		HOLDER MEGA FUSE WITH RED FLEX COVER	
SIZE	DWG. NO.	OUTLINE	REV.
C	OL-02981028HXFC-RED	B	B
DO NOT SCALE DRAWING		SCALE 1:1	SHEET 1 OF 1

PART NO.	DESCRIPTION	MATERIAL (STUD & HARDWARE)
02981028HXFCCR	COVER ONLY	
02981028HXFC-RED	ASSEMBLY	STAINLESS STEEL