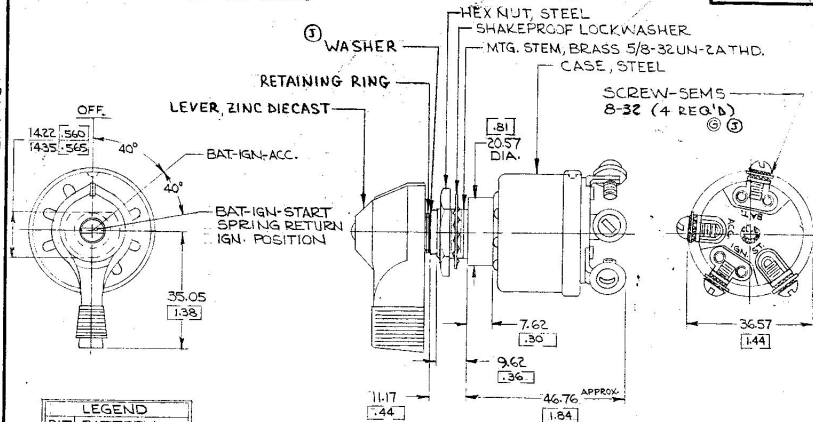


APPLICABLE SAE STANDARD OR  
RECOMMENDED PRACTICE SAE J259

95591

EX-14734

COLE-HERSEE CO.



NOTE:

① ALL STEEL PARTS PLATED

2. SILVERED CONTACTS

3. 0" RING SEALED AT MTG. STEM

DIMENSIONS: MILLIMETERS [INCHES]

Confidential Property of Cole Hersee

DO NOT SCALE

LET	WAS	DATE	BY	LET	WAS	DATE	BY	MATERIAL	DRAWN	CHECKED	APPR'D.	SCALE	DATE DRAWN
								—	H.F.	U.I.		FULL	5-16-67
				J	ECN 02328	7/10/62	N.L.	FINISH					DATE BLUEPRINT
				H	CALLER SINE/2523A	11/17/62	T.H.	—	<b>COLE-HERSEE COMPANY</b>				
				G	REV./19238	2-20-73	KG	TOLERANCES FRACTIONAL ± DECIMAL ±.01	BOSTON, MASS. 02127, U.S.A.				
				F	REDRAWN	12-27-75	KG		<b>IGN. START SWITCH</b>				95591