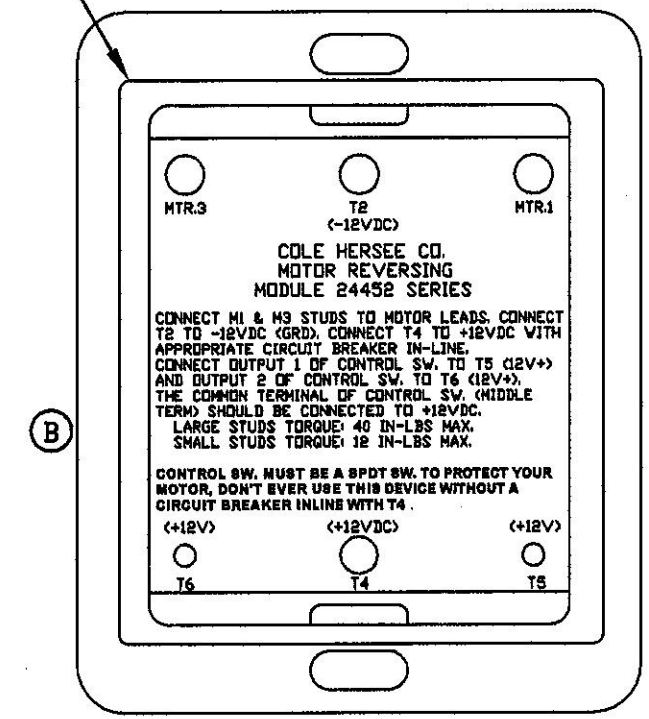
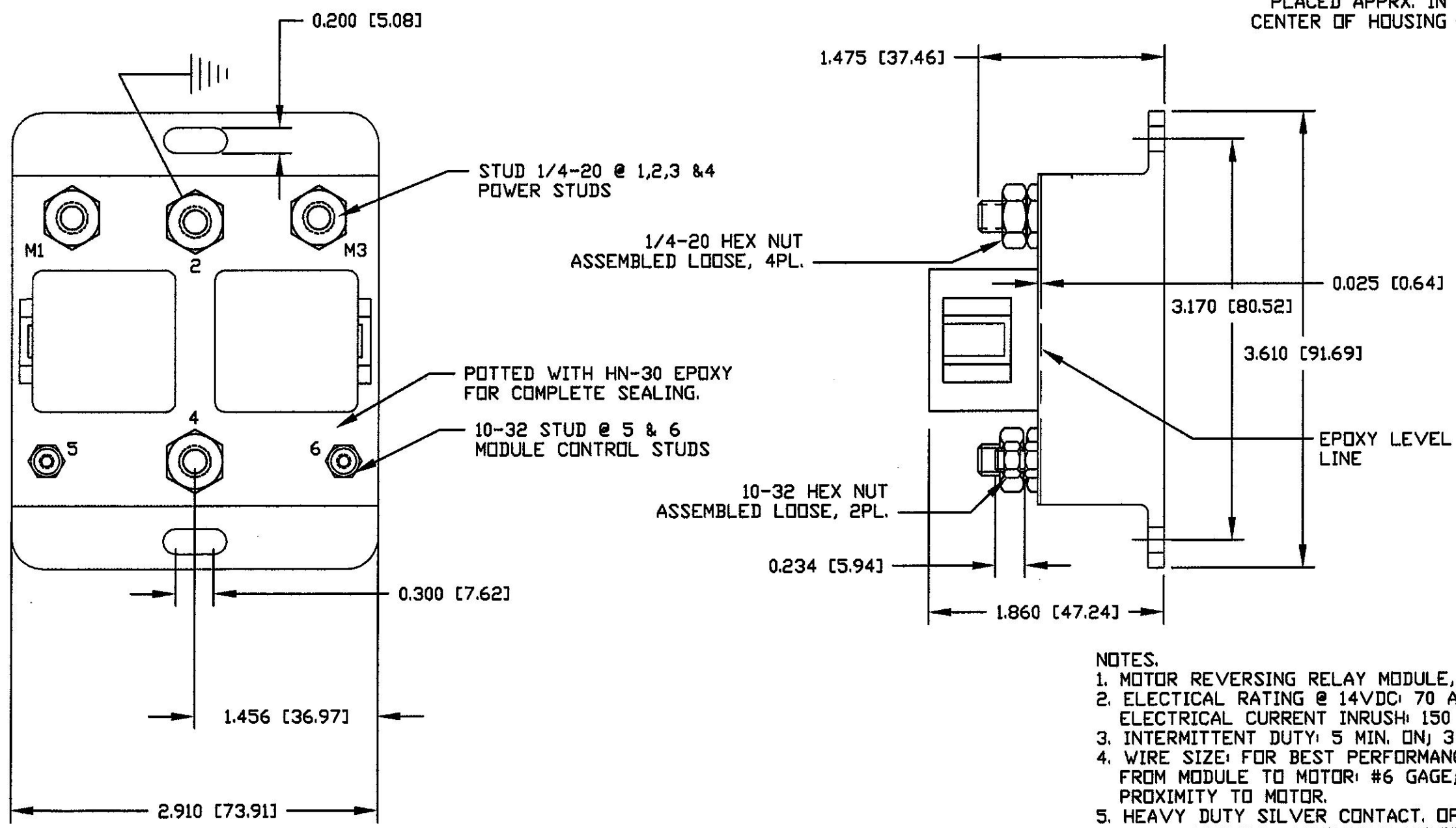


Revision Control Record

| Rev. | Description of Change | ECN No. | Date |
|------|-----------------------|---------|----------|
| A | PRODUCT RELEASE | 06212 | 5/15/06 |
| B | LABEL ADDED | 06371 | 11/15/06 |



- NOTES.**
1. MOTOR REVERSING RELAY MODULE, WITH DYNAMIC BRAKE CAPABILITY.
 2. ELECTRICAL RATING @ 14VDC: 70 AMP INTERMITTENT; 50A CONTINUOUS. ELECTRICAL CURRENT INRUSH: 150 AMPS.
 3. INTERMITTENT DUTY: 5 MIN. ON; 3 MIN. OFF. RELAY PULL-IN VOLTAGE: 7.8VDC MIN.
 4. WIRE SIZE: FOR BEST PERFORMANCE, RECOMMENDED WIRE SIZE FOR CONNECTION FROM MODULE TO MOTOR: #6 GAGE; #8 GAGE MIN. WHEN MOUNTING MODULE IN CLOSE PROXIMITY TO MOTOR.
 5. HEAVY DUTY SILVER CONTACT. OPERATIONAL LIFE: 25,000 CYCLES MINIMUM.
 6. ENVIRONMENTAL: VIBRATION RESISTANCE: 10-55HZ, DOUBLE AMPLITUDE 1.5MM. IP 67 FOR COMPLETE PROTECTION AGAINST DIRT AND MOISTURE PENETRATION.
 7. OPERATING TEMP: -40°C TO 85°C.
 8. IGNITION PROTECTED.
 9. ALL HARDWARE TIN PLATED TO PREVENT CORROSION.
 10. STUD WIRING TORQUE: 1/4-20 STUDS, 40 IN-LBS MAX. 10/32 STUDS: 12 IN-LBS MAX.
 11. ALL DIMENSIONS ARE REFERENCE.

MODULE WIRING CHART

| STUDS | FUNCTION |
|---------|----------------------------|
| M1 & M3 | MOTOR LEADS |
| 2 | GROUND (B-, 12VDC) |
| 4 | POSITIVE (B+, 12VDC) |
| 5 | FORWARD (CONT. OR MOM. B+) |
| 6 | REVERSE (CONT. OR MOM. B+) |

| | | | | | | | | | | | | |
|--|---------|---|-----|--|------------|---|----------|-----------------------|------------|-------|---------------|---|
| <p>Tolerances - Unless otherwise specifically noted, the following are default tolerances:</p> <ul style="list-style-type: none"> • 2-place Decimal Dimensions $\pm .02"$ • 3-place Decimal Dimensions $\pm .005"$ • Angular Dimensions ± 1.0 Deg. • Metric: Refer to equivalent English Dimension Tolerance <p>*** NOTE: All tolerances are Non-Cumulative. ***</p> | | <p>PROPRIETARY INFORMATION - This Engineering Drawing, and the information contained herein, is proprietary to Cole Hersee Company and may not be disclosed, re-produced, or in any other way transmitted or communicated to any other party without the express written consent of an authorized representative of Cole Hersee Company.</p> | | <p>Special Characteristics:</p> <ul style="list-style-type: none"> ⊠ Critical Characteristic, relating to Safety and/or Regulatory Compliance ⓧ Significant Characteristic relating to Process Control (SPC) Ⓚ Control Dimension relating to Form - Fit - Function as defined by Cole Hersee Company and/or the Customer <p>(Note that the identification of any Characteristic as being "Special" does not alter the requirement that ALL specified dimensions & tolerances must be met.)</p> | | <p>Cole Hersee Co. 20 Old Colony Ave., South Boston, MA, 02127 Phn: 617-268-2100 Web: www.colehersee.com</p> | | | | | | |
| <p>Dimensional Units - All dimensions are expressed in inches except those shown in brackets (mm) are expressed in millimeters</p> <p>"REF" or an Asterisk (*) = Non-Toleranced Reference Dimension, shown for clarification purposes only.</p> | | <p>DESIGN CONTROL - It is the responsibility of the individual using/referencing this drawing to ensure that the noted design revision level agrees with the revision level of the Controlled Document (Master Drawing). This is a NON-CONTROLLED DOCUMENT unless otherwise specifically noted.</p> | | <p>DO NOT SCALE - Dimensional variation may occur during printing/ reproduction.</p> | | <p>Description: REVERSING RELAY MODULE</p> | | | | | | |
| Used On or Ref: | EX28178 | Scale: | 1:1 | Drawn By: | G. AUGUSTE | Date Drawn: | 10/16/06 | Responsible Engineer: | G. AUGUSTE | Pg. 1 | Current Rev.: | B |