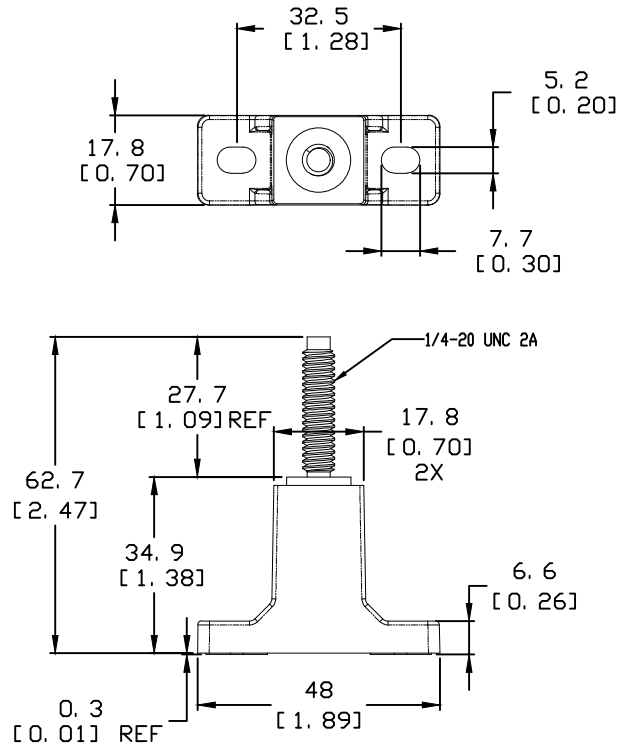
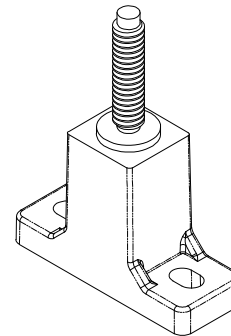


REVISION		
REV	DATE	DESCRIPTION
A	5/17/16	515753GCP - RELEASE PER EM2797 MRY
B	9/2/21	523764ECP/D - UPDATE TORQUE NOTES MRY

NOTES:

1. AGENCY INFORMATION:
UL FILE NO. E14721
 2. COMPLETE ASSEMBLY INCLUDES:
(1) BASE W/ INSERT MOLDED STUD
(1) STEEL NUT (BAGGED SEPARATELY)
(1) STEEL BELLEVILLE WASHER (BAGGED SEPARATELY)
 3. MATERIAL: INSULATION: 35-45% GLASS/MINERAL
REINFORCED THERMOPLASTIC
FLAMMABILITY RATING: V-0 PER UL94
TEMPERATURE RATING 125°C (257°F) MIN.

HARDWARE (STUD, NUT & WASHER): STEEL, ZINC PLATED
 4. APPLICATION TORQUE: 75 IN-LB ± 10%
PANEL MOUNTING: #10 FASTENER, 12 IN-LB (1.3 N-m) MAX
- TOLERANCE (UNLESS OTHERWISE SPECIFIED):
1 PLACE ± 2.5mm [0.1]
2 PLACE ± 0.76mm [0.03]
3 PLACE ± 0.381mm [0.015]



●	DENOTES CRITICAL CHARACTERISTICS.		
CPK	DENOTES CPK DIMENSIONS, -MINIMUM CPK VALUE		
Ⓢ	DENOTES A CHARACTERISTIC THAT PROVIDES AN INDICATION OF PROCESS PERFORMANCE. PROCEDURE FOR MEASUREMENT AND TRACKING TO BE DEFINED IN LITTELFUSE INSPECTION INSTRUCTIONS.		
CP	DENOTES CP DIMENSIONS, -MINIMUM CP VALUE MUST BE WITHIN THE DIMENSIONAL LIMITATIONS SHOWN ON DRAWING AND INITIALLY LOCATED TO ALLOW FOR MAXIMUM TOOL LIFE.		
MATL SPEC		FINISH	
DRW myork	DATE 1/6/2015	SCALE NTS	FINISH GOOD WT GRAMS/PIECE
UNLESS OTHERWISE SPECIFIED, DIMENSIONS ARE IN MILLIMETERS, DIMENSIONS IN BRACKETS [] ARE INCHES DIMENSIONING AND DO NOT INCLUDE PLATING. TOLERANCING TO BE INTERPRETED IN ACCORDANCE WITH ANSI Y14.5M-1994			
3RD ANGLE PROJECTION			
TITLE 1000V 400A FUSE HOLDER OUTLINE			
Littelfuse® CHICAGO, ILLINOIS 60631		REVISION B	DRWG NO. OL-LSCR101
			SHEET 1 OF 1