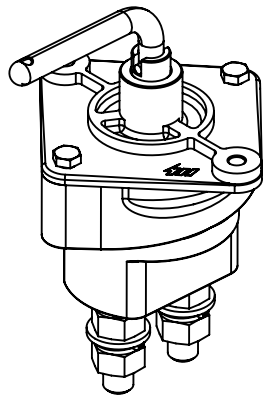
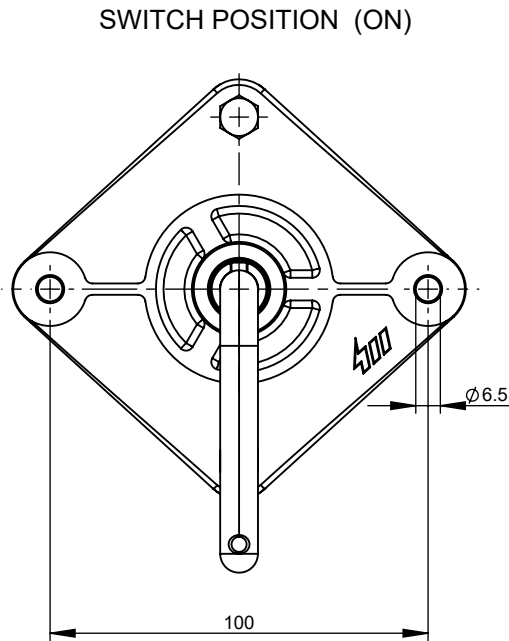
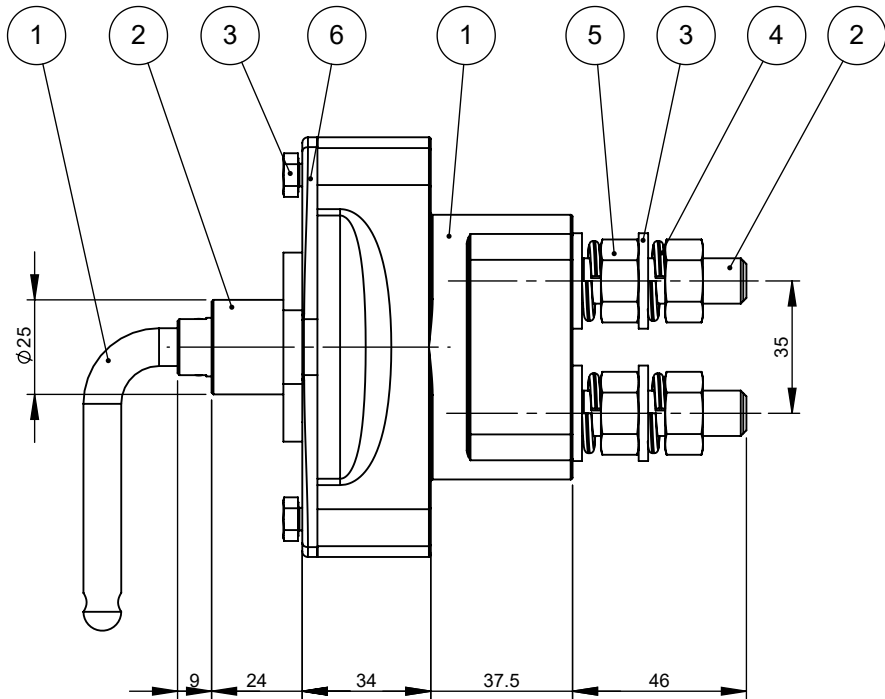
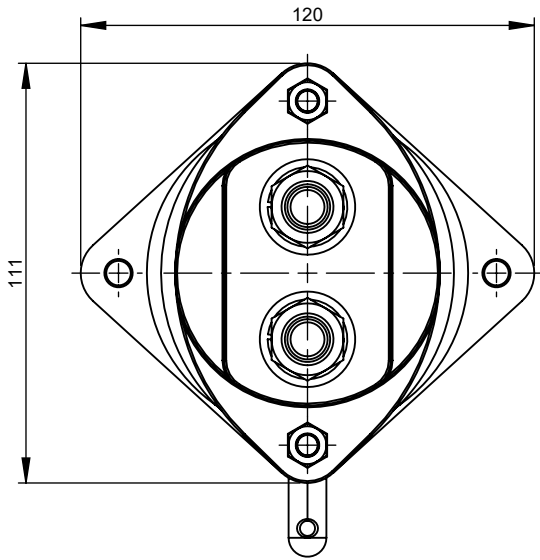
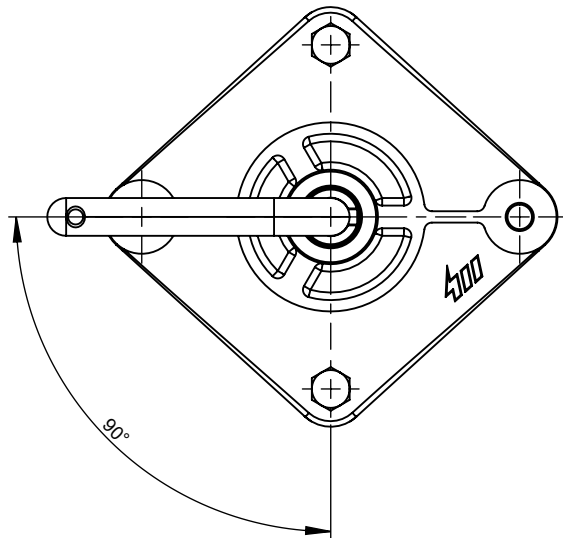
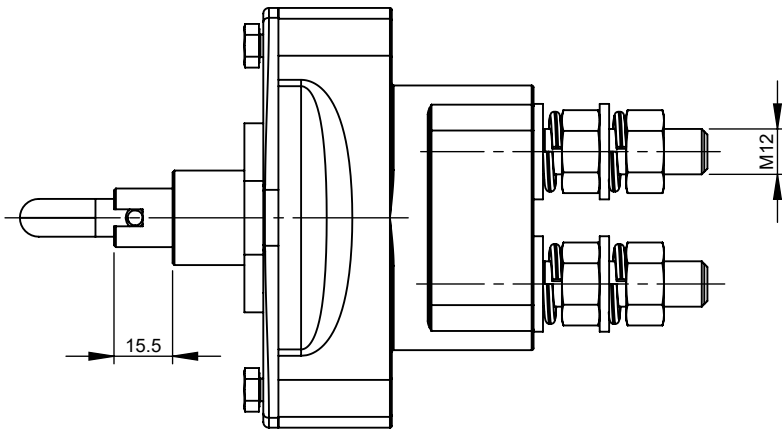


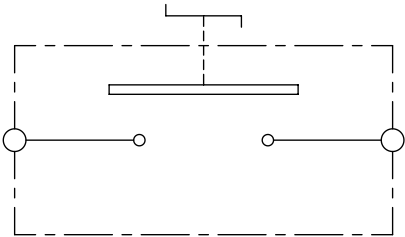
REVISIONS				
REV.	DESCRIPTION	DATE	DESIGNED	APPROVED
A	Initial release	07-Jul-22	L.Dal Molin	M.Tinto



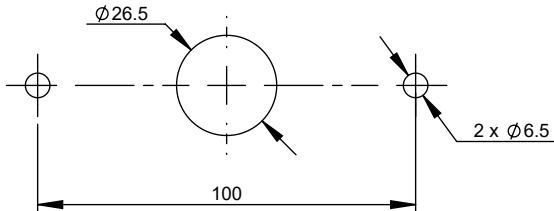
SCALE 1:3



Electrical Diagram




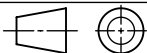


Fixing Holes



CHARACTERISTICS AND PRESCRIPTIONS

- Rated voltage: 12V-24V
- Voltage limit operation: 16V ÷ 32V
- Maximum continuous current in the main contact: 350A at 23°C
- Maximum current of short duration in the main contact: 2500A for 5sec at 23°C
- Number of electrical operations: 5000
- Number of mechanical operations: 5000
- Fix the M6 screws: 8 ± 1 Nm

DIMENSIONS AND TOLERANCES IN MILLIMETERS, DEFINED ACCORDING TO ISO 1101-2017.								
linear dimensions								
0,5 3	>3 6	>6 30	>30 120	>120 400	>400 1000	>1000 2000		
±0,2	±0,3	±0,5	±0,8	±1,2	±2	±3		
angle (for range of lengths)								
up to 10	>10 50	>50 120	>120 400					
±1°30'	±1°	±0°30'	±0°15'					
	FIT/ FUNCTION CRITICAL CHARACTERISTICS SYMBOL							
<S>	SAFETY/ COMPLIANCE CRITICAL CHARACTERISTICS SYMBOL							
CPK	DENOTES CPK DIMENSIONS MINIMUM CPK VALUE							
	DENOTES A CHARACTERISTIC THAT PROVIDES AN INDICATION OF PROCESS PERFORMANCE.PROCEDURE FOR MEASUREMENTAND TRACKINGTO BE DEFINED IN LITTELFUSE INSPECTION INSTRUCTIONS							
CP	DENOTES CP DIMENSIONS, -MINIMUM CP VALUE MUST BE WITHIN THE DIMENSIONAL LIMITATIONS SHOWN ON DRAWING AND INITIALLY LOCATED TO ALLOW FOR MAXIMUM TOOL LIFE							
NAME		DATE		 Expertise Applied Answers Delivered				
DRAWN		L. Dal Molin					07-Jun-22	
CHECKED		-					-	
FORM NO: CVP-PE40-0013 REV A		TITLE						
FIRST ANGLE PROJECTION		MANUAL BDS IGC-350						
		SIZE: A3	DWG. NO.	OUTLINE OL-08098500	REV. A			
DO NOT SCALE DRAWING		SCALE 1:2			SHEET 1 OF 1			