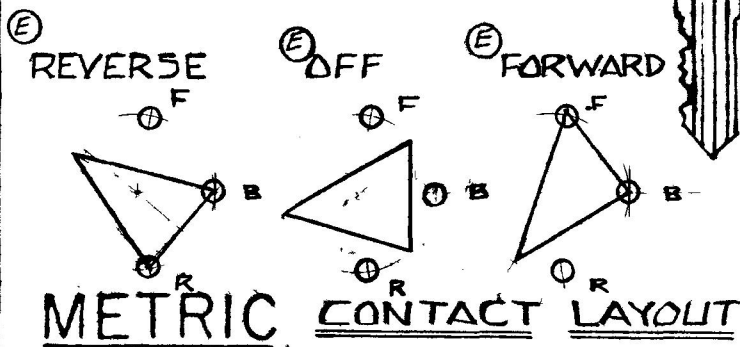
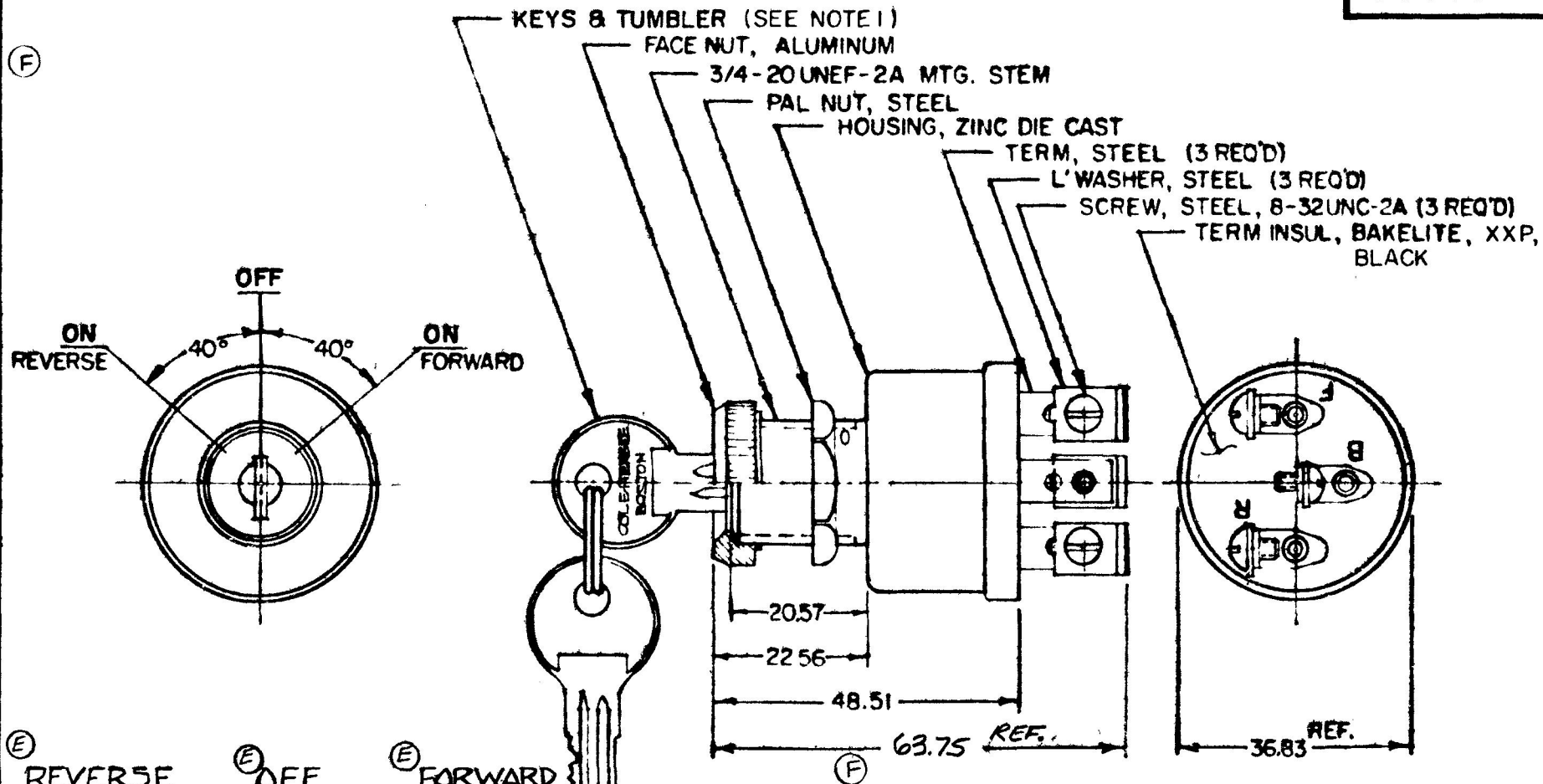


WM
 .25
 .57
 .88
 1.23
 1.51
 1.75
 FN
 .010
 .810
 .900
 1.450
 1.910
 2.510

95593



- NOTE:
1. SUPPLIED IN SETS OF 10 MATING KEYS & CYLINDERS, CH-501 THRU CH-506, -510, -512, -516 & CH-523
 2. ADAPTER FACE NUT PERMITS ASSEMBLY OF SWITCH TO 3/4 & 7/8 DIA PANEL HOLES
 3. ALL STEEL PARTS PLATED

EX-14784

DO NOT SCALE

LET	WAS	DATE	BY	LET	WAS	DATE	BY	MATERIAL NOTED	DRAWN	CHECKED	APPRV D	SCALE	DATE DRAWN	
									GAK	11-14-79		1:1	5-25-67	
				G	FOR ZINC 25239	10/23/72	JH	FINISH NOTED	 20 OLD COLON AVENUE SOUTH BOSTON, MA U.S.A. 02127				DATE BLUEPRINT	
				I	69.51/11806	11/29/65	VB	TOLERANCES					3 POSITION REVERSING SWITCH	95593
				E	ADDED VIEWS	4-7-83	VB	DECIMAL ± .010 METRIC ± .25						
				D	REDRAWN	11-9-79	RR							

CH 188(4 78)