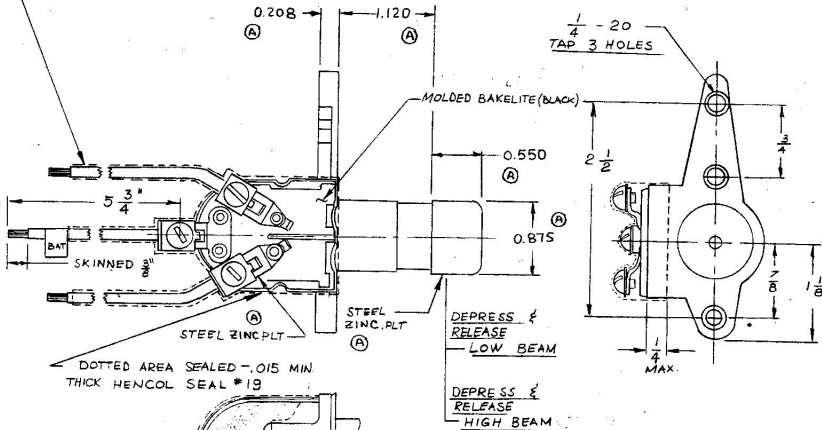


7700

#16 GA. BLACK PLASTIC COVERED WIRE



BOTTOM VIEW OF SWITCH
SHOWING AREA SEALED

Confidential Property of Cole Hersee

DO NOT SCALE

LET.	WAS	DATE	BY	LET	WAS	DATE	BY	MATERIAL	DRAWN	CHECKED	APPROV'D.	SCALE	DATE DRAWN
								NOTED	MK	Z		1:1	10-6-86
								FINISH					DATE BLUEPRINT
								TOLERANCES	 Cole Hersee Co. <small>MANUFACTURING DIVISION, 3000 BOSTON ST., WILMINGTON, DE.</small>				
								DECIMAL ± 0.15 METRIC ± 0.10					DIMMER SWITCH