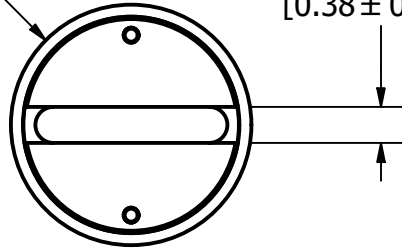


Ø63.5 ± 0.38
[Ø2.50 ± 0.015]

9.5 ± 0.08
[0.38 ± 0.003]



50.8 ± 0.89
[2.00 ± 0.035]

13.5 ± 0.13
[0.53 ± 0.005]

203.2 ± 2.29
[8.00 ± 0.090]

152.0 ± 1.52
[5.98 ± 0.060]

95.3 ± 0.76
[3.75 ± 0.030]

17.9 ^{+1.57}_{-0.00}
[0.70 ^{+0.062}_{-0.000}]

REVISION				
REV	DATE	DESCRIPTION		
A	10/14/22	525789GCP - RELEASE MRY		

1	NO	COMPONENT NO	DESCRIPTION	QTY/M	U/M
BILL OF MATERIAL					
<S>	CRITICAL CHARACTERISTIC FOR PART SAFETY/COMPLIANCE				
●	DENOTES CRITICAL CHARACTERISTICS.				
CPK	DENOTES CPK DIMENSIONS, -MINIMUM CPK VALUE				
⬡	DENOTES A CHARACTERISTIC THAT PROVIDES AN INDICATION OF PROCESS PERFORMANCE. PROCEDURE FOR MEASUREMENT AND TRACKING TO BE DEFINED IN LITTELFUSE INSPECTION INSTRUCTIONS.				
CP	DENOTES CP DIMENSIONS, -MINIMUM CP VALUE MUST BE WITHIN THE DIMENSIONAL LIMITATIONS SHOWN ON DRAWING AND INITIALLY LOCATED TO ALLOW FOR MAXIMUM TOOL LIFE.				
MATL SPEC			FINISH		
DRW	DATE		SCALE	FINISH GOOD WT	
JMOLER	10/13/2022		NTS	GRAMS/PIECE	
UNLESS OTHERWISE SPECIFIED, DIMENSIONS ARE IN MILLIMETERS, DIMENSIONS IN BRACKETS [] ARE INCHES DIMENSIONING AND DO NOT INCLUDE PLATING. TOLERANCING TO BE INTERPRETED IN ACCORDANCE WITH ANSI Y14.5M-1994					
3RD ANGLE PROJECTION					
TITLE SPFJ 450A OUTLINE					
Littelfuse CHICAGO, ILLINOIS 60631			REVISION	DRWG NO.	SHEET 1 OF 1
			A	OL-SPFJ450	