

05903300 & 05903500 RELAYS

12V/24V • Relays Continuous Use



05903300
12V



05903500
24V

Specifications

Max Operating Voltage:	12V-24V
Max Continuous Current:	200A-100A
Intermittent Current:	500A-250A at 1 sec
Operating Temp:	-40 °C to +100 °C
Ingress Protection:	IP67
Contacts:	Silver-plated Copper
Terminals:	M6 Tin-plated Brass

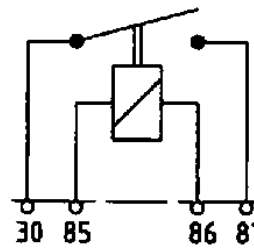
Applications

- Heavy trucks
- Commercial vehicles

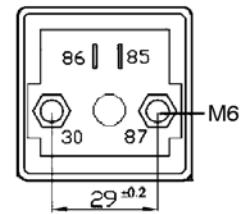
Web Resources

Download technical resources at:
littelfuse.com/relays

Electrical diagram



Mounting diagram

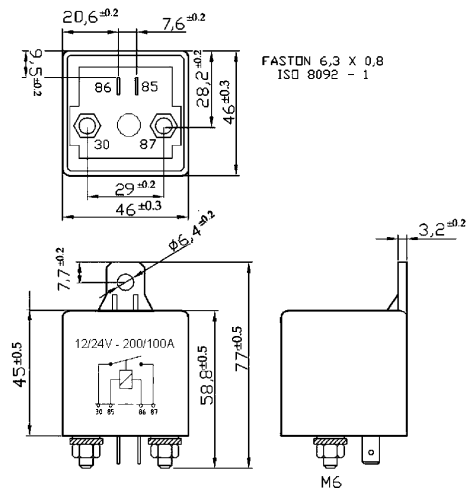


Description

05903300 A remote control switch for automotive users. Commonly used as a starter, with intermittent action it allows to draw 200A. While used for continuous working purposes a maximum of 120A can be loaded. It works on closing the circuit load with a 12V rated voltage.

05903500 A remote control switch for automotive users. Commonly used as a starter, with intermittent working or continuous working it allows to draw 100A. It works on closing the circuit load with a 24V rated voltage.

Dimensions in millimeters



Features and Benefits

- These relays switches are available in version 12V and 24V
- Available in heavy duty 100A and 200A versions.
- Brass contact nuts.

Ordering Information

PART NUMBER	VOLTAGE	AMPERAGE	IP PROTECTION	TERMINAL
05903300	12V DC	200A	IP67	M6 Tin-plated brass
05903500	24V DC	100A	IP67	M6 Tin-plated brass