

## 08098900 BATTERY DISCONNECT SWITCHES

350A • SPST • IP65 • M12 Studs • Removable or Fixed Handle



### Description

Manual Battery Disconnect Switch features a removable or fixed handle depending on part number selected.

**08098900** - base unit with removable handle

**08098980** - switch with removable handle with black boot and chain

**08098981** - switch with fixed handle and black boot

### Features/Benefits

- 350A continuous current rating
- Waterproof and dustproof to IP65

### Specifications

<b>Max Operating Voltage:</b>	24V DC
<b>Max Continuous Current:</b>	350A
<b>Intermittent Current:</b>	2500A at 3 sec
<b>Operating Temp:</b>	-40°C to +80°C
<b>Ingress Protection:</b>	IP65 IP69K (08098981)
<b>Contacts:</b>	Silver-Plated Copper
<b>Terminals:</b>	M12 (zinc-plated steel)

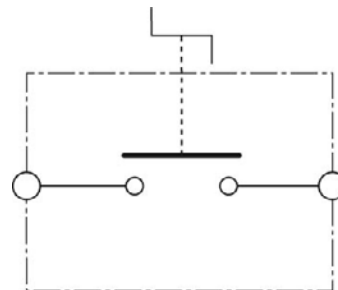
### Applications

- Heavy Truck
- Off-Road
- Emergency Vehicles
- Material Handling
- Mining
- Agricultural
- Marine
- Construction

### Web Resources

Download 2D prints and additional technical resources at:  
[littelfuse.com/ManualBatterySwitches](http://littelfuse.com/ManualBatterySwitches)

### Electrical Diagram



### Ordering Information

PART NUMBERS		VOLTAGE	AMPERAGE	CIRCUITRY	MOUNTING	INGRESS	NOTES
BULK	BOXED						
08098900	08098900-BX	12-24V DC	350A	SPST	Flange Mount	IP65	Removable Handle
08098980	08098980-BX	12-24V DC	350A	SPST	Flange Mount	IP65	Removable Handle w/ Chain Cap to Cover when Key is Removed
08098981	08098981-BX	12-24V DC	350A	SPST	Flange Mount	IP65/IP69K	Fixed Handle w/ Black Boot

# 08098900 BATTERY DISCONNECT SWITCHES

## Dimensions in millimeters

