

# Automotive ASMD Series

## Surface Mount



### Additional Information



Resources



Accessories



Samples

### Description

Helping to reduce weight of wire harnesses. PPTC devices distributed in a circuit can allow the use of smaller wire sizes with the resulting harnesses. Forego looping back and forth around a fuse box and place your protection wherever you see fit. The solid state composition of PPTC devices helps provide reliability.

### Features

- Products meet applicable automotive industry standards
- Compatible with high-volume electronics assembly
- Resettable solution against overcurrent and short-circuit
- AEC-Q200 qualified, RoHS compliant, and ISO/TS16949 certified
- Surface-mount form factor
- Expertise from the world's leading resettable overcurrent protection manufacturer
- Wide range of dedicated automotive surface-mount and radial-leaded resettable overcurrent devices
- High performance transient voltage protection devices

### Applications

- Automotive and industrial transportation
- Actuators and medium motors
- Trace protection
- Harness/junction box protection
- Powered outputs
- Electronic control modules
- Telematics/Infotainment

### Electrical Characteristics

Part Number	Ordering Part Number	$I_H(A)@$ ( $R_{1MAX}$ )	$I_H(A)@$ ( $R_{nMAX}$ )	$I_T$ (A)	$V_{MAX}$ (V <sub>DC</sub> )	$I_{MAX}$ (A)	$P_{D Typ}$ (W)	Max Time-to-trip		$R_{MIN}$ ( $\Omega$ )	$R_{1MAX}$ ( $\Omega$ )	$R_{nMAX}$ ( $\Omega$ )
								(A)	(s)			
<b>ASMD – 2920 Size</b>												
ASMD030F	RF1631-000	0.23	0.23	0.59	60	10	1.1	1.15	12.0	0.980	4.800	4.800
ASMD050F	RF1632-000	0.37	0.37	0.98	60	10	1.7	1.95	20.0	0.290	1.400	1.400
ASMD075F	RF1633-000	0.60	0.60	1.48	30	40	1.1	3.00	20.0	0.290	1.000	1.000
ASMD100F	RF1634-000	0.90	0.90	2.16	30	40	1.1	4.50	20.0	0.098	0.480	0.480
ASMD125F	RF1636-000	1.04	1.04	2.46	16	40	1.1	5.20	20.0	0.057	0.250	0.250
<b>ASMD - 3425 Size</b>												
ASMD150F	RF1637-000	1.27	1.27	2.95	16	40	1.2	6.35	25.0	0.049	0.250	0.250
ASMD150F/33	RF4269-000	1.20	1.20	2.88	33	40	1.9	6.00	14.0	0.068	0.230	0.230
ASMD185F	RF1378-000	1.85	1.85	3.70	16	40	1.5	9.25	11.3	0.032	0.126	0.126
ASMD200F	RF1638-000	1.73	1.73	3.93	16	40	1.2	8.65	30.0	0.050	0.120	0.120
ASMD250F	RF1639-000	1.97	1.97	5.00	16	40	1.2	9.85	30.0	0.035	0.085	0.085

#### Notes:

- $I_H$  : Hold current: maximum current device will pass without interruption in 25°C, unless otherwise specified
- $I_T$  : Trip current: minimum current that will switch the device from low-resistance to high-resistance in 25°C still air, unless otherwise specified.
- $V_{MAX}$  : Maximum voltage device can withstand without damage at rated current.
- $I_{MAX}$  : Maximum fault current device can withstand without damage at rated voltage.

- $P_D$  : Power dissipated from device when in the tripped state in 25°C still air, unless otherwise specified.
- $R_{MIN}$  : Minimum resistance of device as supplied at 25°C, unless otherwise specified.
- $R_{1MAX}$  : Maximum resistance of device when measured one hour post reflow, unless otherwise specified.
- $R_{nMAX}$  : Maximum functional resistance of device after being subjected to the stresses described in PS400 at 25°C, unless otherwise specified.

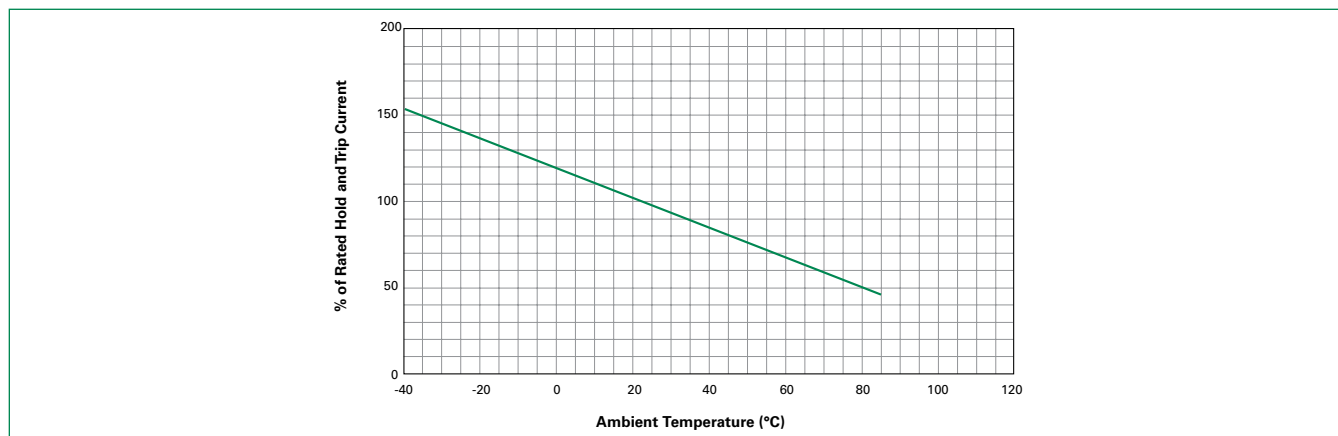
# Automotive ASMD Series

## Surface Mount

### Temperature Derating

Maximum Ambient Temperature										
Part Number	-40°C	-20°C	0°C	20°C	25°C	40°C	50°C	60°C	70°C	85°C
Hold Current (A)										
ASMD – 2920 Size										
ASMD030F	0.35	0.31	0.27	0.23	0.22	0.19	0.17	0.15	0.13	0.11
ASMD050F	0.59	0.53	0.46	0.39	0.37	0.33	0.29	0.26	0.23	0.18
ASMD075F	0.91	0.81	0.71	0.60	0.58	0.50	0.45	0.40	0.35	0.28
ASMD100F	1.37	1.22	1.06	0.90	0.86	0.76	0.68	0.60	0.52	0.41
ASMD125F	1.58	1.40	1.23	1.04	1.00	0.87	0.78	0.70	0.60	0.48
ASMD - 3425 Size										
ASMD150F	1.93	1.70	1.50	1.27	1.22	1.07	0.95	0.85	0.74	0.58
ASMD150F/33	1.96	1.73	1.50	1.26	1.20	1.03	0.91	0.80	0.68	0.51
ASMD185F	2.93	2.58	2.30	1.93	1.85	1.62	1.44	1.30	1.12	0.88
ASMD200F	2.63	2.34	2.04	1.73	1.66	1.45	1.30	1.16	1.00	0.80
ASMD250F	3.00	2.66	2.32	1.97	1.89	1.65	1.48	1.32	1.14	0.91

### Temperature Derating Curve



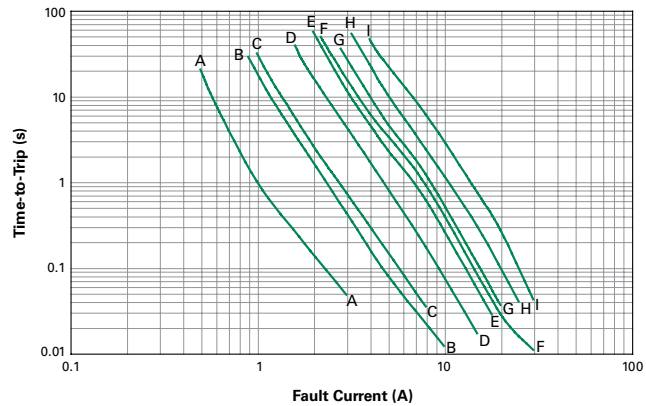
# Automotive ASMD Series

## Surface Mount

### Typical Time-to-Trip Curves at 25°C

#### ASMD

- A = ASMD030F
- B = ASMD050F
- C = ASMD075F
- D = ASMD100F
- E = ASMD125F
- F = ASMD150F, ASMD150F/33
- G = ASMD185F
- H = ASMD200F
- I = ASMD250F



**Note:** The average time current curves and Temperature Derating curve performance is affected by a number of variables, and these curves provided as guidance only. Customer must verify the performance in their application.

### Physical Specifications

<b>Terminal Pad Material</b>	98%+ Tin-plated Brass
<b>Soldering Characteristics</b>	Solderability per ANSI-J-STD-002 Category 1
<b>Solder Heat Withstand</b>	per IEC 60068-2-20, Test Tb, Section 5, Method 1a
<b>Flammability Resistance</b>	per IEC 60695-11-5 Needle Flame Test for 20 seconds
<b>Recommended Storage Conditions</b>	40°C max, 70% RH max; Devices May Not Meet Specified Ratings if Storage Conditions are Exceeded
<b>Operation Temperature</b>	-40°C~85°C

**Note:** See PS400 for other physical specifications.

### Environmental Specifications

Test	Conditions	Resistance Change
<b>Passive Aging</b>	60°C, 1000 hrs	±3% Typical
	85°C, 1000 hrs	±5% Typical
<b>Humidity Aging</b>	85°C, 85% R.H., 100 hrs	±1.2% Typical
<b>Thermal Shock</b>	85°C, -40°C 20 times	-33% Typical
	125°C, -55°C 10 times	-33% Typical
<b>Solvent Resistance</b>	Freon	No change
	Trichloroethane	No change
	Hydrocarbons	No change

**Note:** See PS400 for other environmental specifications.

<b>Moisture Resistance Level</b>	Level 2a, J-STD-020
<b>Storage Conditions</b>	40°C max, 70% RH max; devices should remain in original sealed bags prior to use. Devices may not meet specified values if these storage conditions are exceeded.

# Automotive ASMD Series

## Surface Mount

### Dimension Figures

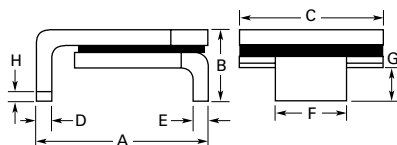


Figure 1

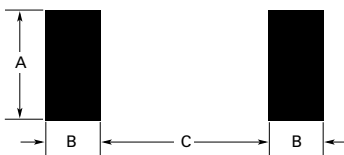
### Dimensions

Part Number	Dimensions in Millimeters (Inches)																Figure
	A		B		C		D		E		F		G		H		
	Min	Max	Min	Max	Min	Max	Min	Max	Min	Max	Min	Max	Min	Max	Min	Max	
<b>ASMD – 2920 Size</b>																	
ASMD030F	6.73 (0.265)	7.98 (0.314)	—	3.18 (0.125)	4.8 (0.19)	5.44 (0.214)	0.56 (0.022)	0.71 (0.028)	0.56 (0.022)	0.71 (0.028)	2.16 (0.085)	2.41 (0.095)	0.66 (0.026)	1.37 (0.054)	0.43 (0.017)	—	1
ASMD050F	6.73 (0.265)	7.98 (0.314)	—	3.18 (0.125)	4.8 (0.19)	5.44 (0.214)	0.56 (0.022)	0.71 (0.028)	0.56 (0.022)	0.71 (0.028)	2.16 (0.085)	2.41 (0.095)	0.66 (0.026)	1.37 (0.054)	0.43 (0.017)	—	1
ASMD075F	6.73 (0.265)	7.98 (0.314)	—	3.18 (0.125)	4.8 (0.19)	5.44 (0.214)	0.56 (0.022)	0.71 (0.028)	0.56 (0.022)	0.71 (0.028)	2.16 (0.085)	2.41 (0.095)	0.66 (0.026)	1.37 (0.054)	0.43 (0.017)	—	1
ASMD100F	6.73 (0.265)	7.98 (0.314)	—	3.00 (0.118)	4.8 (0.19)	5.44 (0.214)	0.56 (0.022)	0.71 (0.028)	0.56 (0.022)	0.71 (0.028)	2.16 (0.085)	2.41 (0.095)	0.66 (0.026)	1.37 (0.054)	0.43 (0.017)	—	1
ASMD125F	6.73 (0.265)	7.98 (0.314)	—	3.00 (0.118)	4.8 (0.19)	5.44 (0.214)	0.56 (0.022)	0.71 (0.028)	0.56 (0.022)	0.71 (0.028)	2.16 (0.085)	2.41 (0.095)	0.66 (0.026)	1.37 (0.054)	0.43 (0.017)	—	1
<b>ASMD - 3425 Size</b>																	
ASMD150F	8.00 (0.315)	9.40 (0.370)	—	3.00 (0.118)	6.0 (0.24)	6.71 (0.264)	0.56 (0.022)	0.71 (0.028)	0.56 (0.022)	0.71 (0.028)	3.68 (0.145)	3.94 (0.155)	0.66 (0.026)	1.37 (0.054)	0.43 (0.017)	—	1
ASMD150F/33	8.00 (0.315)	9.40 (0.370)	—	3.00 (0.118)	6.0 (0.24)	6.71 (0.264)	0.56 (0.022)	0.71 (0.028)	0.56 (0.022)	0.71 (0.028)	3.68 (0.145)	3.94 (0.155)	0.66 (0.026)	1.37 (0.054)	0.43 (0.017)	—	1
ASMD185F	8.00 (0.315)	9.40 (0.370)	—	3.00 (0.118)	6.0 (0.24)	6.71 (0.264)	0.56 (0.022)	0.71 (0.028)	0.56 (0.022)	0.71 (0.028)	3.68 (0.145)	3.94 (0.155)	0.66 (0.026)	1.37 (0.054)	0.43 (0.017)	—	1
ASMD200F	8.00 (0.315)	9.40 (0.370)	—	3.00 (0.118)	6.0 (0.24)	6.71 (0.264)	0.56 (0.022)	0.71 (0.028)	0.56 (0.022)	0.71 (0.028)	3.68 (0.145)	3.94 (0.155)	0.66 (0.026)	1.37 (0.054)	0.43 (0.017)	—	1
ASMD250F	8.00 (0.315)	9.40 (0.370)	—	3.00 (0.118)	6.0 (0.24)	6.71 (0.264)	0.56 (0.022)	0.71 (0.028)	0.56 (0.022)	0.71 (0.028)	3.68 (0.145)	3.94 (0.155)	0.66 (0.026)	1.37 (0.054)	0.43 (0.017)	—	1

# Automotive ASMD Series

## Surface Mount

### Recommended Pad Layout



### Packaging and Marking Information

Part Number	Tape and Reel Quantity	Standard Package	Part Marking	Recommended Pad Layout Figures [mm (in)]		
				Dimension A (Min*/Nom)	Dimension B (Nom)	Dimension C (Nom)
<b>ASMD – 2920 Series</b>						
ASMD030F	2,000	10,000	030F	3.1 (0.12)	2.3 (0.09)	5.1 (0.201)
ASMD050F	2,000	10,000	050F	3.1 (0.12)	2.3 (0.09)	5.1 (0.201)
ASMD075F	2,000	10,000	075F	3.1 (0.12)	2.3 (0.09)	5.1 (0.201)
ASMD100F	2,000	10,000	100F	3.1 (0.12)	2.3 (0.09)	5.1 (0.201)
ASMD125F	2,000	10,000	125F	3.1 (0.12)	2.3 (0.09)	5.1 (0.201)
<b>ASMD - 3425 Size</b>						
ASMD150F	1,500	7,500	150F	4.6 (0.18)	2.3 (0.09)	6.1 (0.240)
ASMD150F/33	1,500	7,500	153F	4.6 (0.18)	2.3 (0.09)	6.1 (0.240)
ASMD185F	1,500	7,500	185A	4.6 (0.18)	2.3 (0.09)	6.1 (0.240)
ASMD200F	1,500	7,500	200F	4.6 (0.18)	2.3 (0.09)	6.1 (0.240)
ASMD250F	1,500	7,500	250F	4.6 (0.18)	2.3 (0.09)	6.1 (0.240)

\* These devices are intended for use in automotive applications.

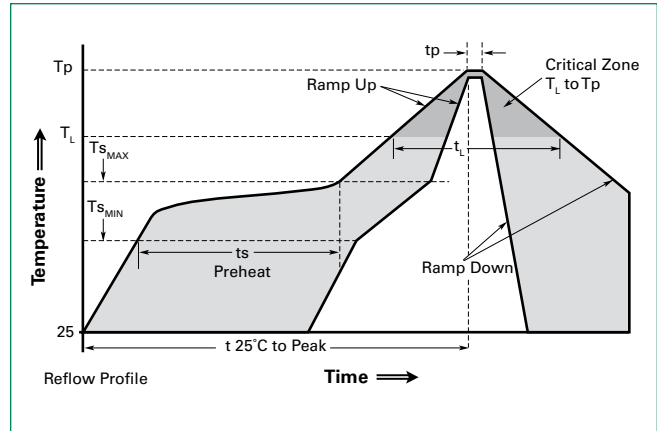
# Automotive ASMD Series

## Surface Mount

### Solder Reflow Recommendations

<b>Profile Feature</b>	Pb-Free Assembly
<b>Average ramp up rate (Ts<sub>MAX</sub> to Tp)</b>	3°C/s max
<b>Preheat</b>	
• Temperature min (Ts <sub>MIN</sub> )	150°C
• Temperature max (Ts <sub>MAX</sub> )	200°C
• Time (ts <sub>MIN</sub> to ts <sub>MAX</sub> )	60-120 s
<b>Time maintained above:</b>	
• Temperature (T <sub>L</sub> )	217°C
• Time (t <sub>L</sub> )	60-150 s
<b>Peak/Classification temperature (Tp)</b>	260°C
<b>Time within 5°C of actual peak temperature</b>	
Time (tp)	30 s max
<b>Ramp down rate</b>	3°C/s max
<b>Time 25°C to peak temperature</b>	8 min max

**Note:** All temperatures refer to topside of the package, measured on the package body surface.



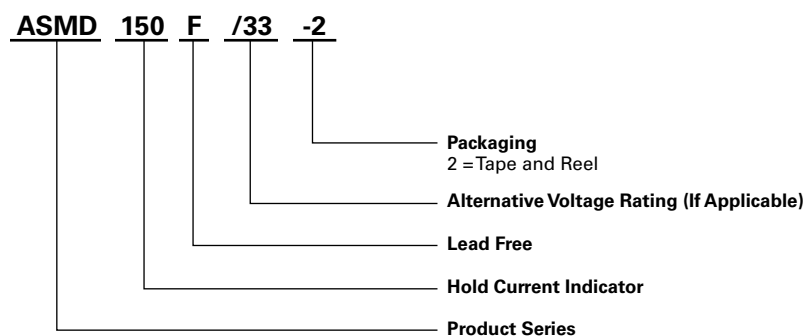
#### Solder Reflow

- Recommended reflow method: IR, hot air, nitrogen.
- Recommended maximum paste thickness: 0.25mm (0.010in)
- Devices can be cleaned using standard methods and aqueous solvents.
- Experience has shown the optimum conditions for forming acceptable solder fillets occur when a reasonable amount of solder paste is placed underneath each device's termination. As such, we request that customers comply with our recommended solder pad layouts.
- Customer should validate that the solder paste amount and reflow recommendations meet its application.
- We request that customer board layouts refrain from placing raised features (e.g. vias, nomenclature, traces, etc.) underneath PolySwitch devices. It is possible that raised features could negatively impact solderability performance of our devices.

#### Rework

- Standard industry practices. (Please also avoid direct contact to the device.)

### Part Ordering Number System



# Automotive ASMD Series

## Surface Mount

### Tape and Reel Specifications

Description	ASMD EIA 481-2	
	ASMD030F ASMD050F ASMD075F ASMD100F ASMD125F	ASMD150F ASMD150F/33 ASMD185F ASMD200F ASMD250F
<b>W</b>	16.0 ± 0.30	16.0 ± 0.30
<b>P<sub>0</sub></b>	4.0 ± 0.10	4.0 ± 0.10
<b>P<sub>1</sub></b>	8.0 ± 0.10	12.0 ± 0.10
<b>P<sub>2</sub></b>	2.0 ± 0.10	2.0 ± 0.10
<b>A<sub>0</sub></b>	5.6 ± 0.23	6.9 ± 0.23
<b>B<sub>0</sub></b>	8.1 ± 0.15	9.6 ± 0.15
<b>B<sub>1</sub> max</b>	12.1	12.1
<b>D<sub>0</sub></b>	1.5 + 0.10/ -0.00	1.5 + 0.10/ -0.00
<b>F</b>	7.50 ± 0.10	7.50 ± 0.10
<b>E<sub>1</sub></b>	1.75 ± 0.10	1.75 ± 0.10
<b>E<sub>2</sub> min</b>	14.25	14.25
<b>T max</b>	0.4	0.4
<b>T<sub>1</sub> max</b>	0.1	0.1
<b>K<sub>0</sub></b>	3.2 ± 0.15	3.4 ± 0.15
<b>A max</b>	330	330
<b>N min</b>	50	50
<b>W<sub>1</sub></b>	16.4 + 2.0/-0.00	16.4 + 2.0/-0.00
<b>W<sub>2</sub> max</b>	22.4	22.4

# Automotive ASMD Series

## Surface Mount

### Tape and Reel Diagrams

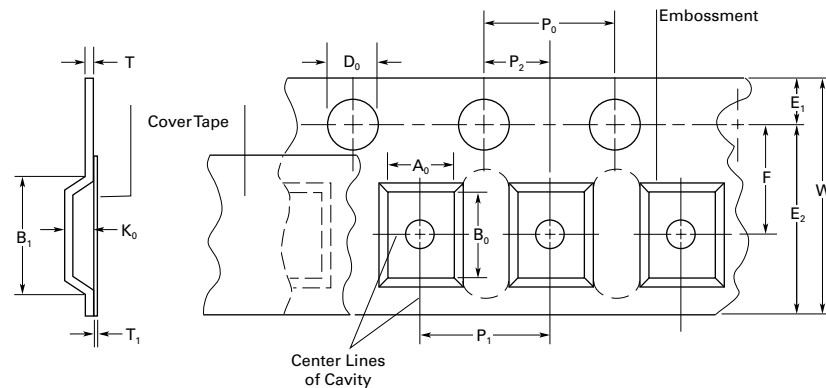


Figure 1

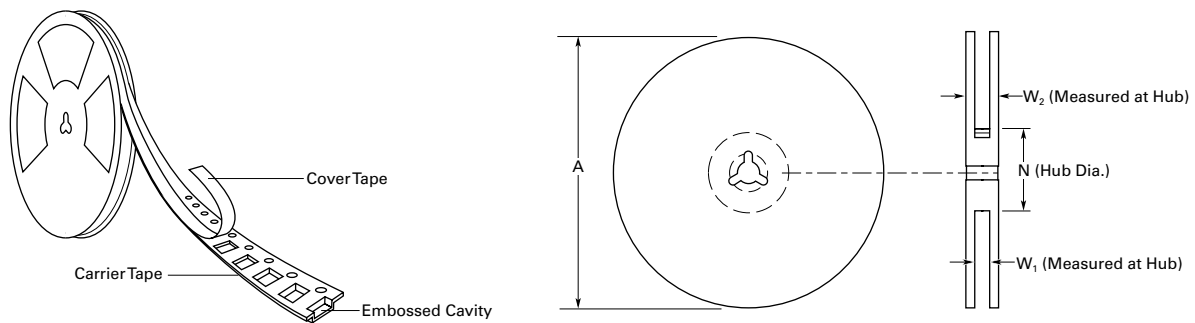


Figure 2

#### Warning

- Users should independently evaluate the suitability of and test each product selected for their own application.
- Operation beyond the maximum ratings or improper use may result in device damage and possible electrical arcing and flame.
- These devices are intended for protection against damage caused by occasional overcurrent or overtemperature fault conditions and should not be used when repeated fault conditions or prolonged trip events are anticipated.
- Contamination of the PPTC material with certain silicone-based oils or some aggressive solvents can adversely impact the performance of the devices.
- Device performance can be impacted negatively if devices are handled in a manner inconsistent with recommended electronic, thermal, and mechanical procedures for electronic components.
- PPTC devices are not recommended for installation in applications where the device is constrained such that its PTC properties are inhibited, for example in rigid potting materials or in rigid housings, which lack adequate clearance to accommodate device expansion.
- Operation in circuits with a large inductance can generate a circuit voltage ( $Ldi/dt$ ) above the rated voltage of the device.

**Disclaimer Notice** - Information furnished is believed to be accurate and reliable. However, users should independently evaluate the suitability of and test each product selected for their own applications. Littelfuse products are not designed for, and may not be used in, all applications. Read complete Disclaimer Notice at [www.littelfuse.com/disclaimer-electronics](http://www.littelfuse.com/disclaimer-electronics).