

Protection Relays

ELCT SERIES

Current Transformer



Description

The ELCT series is a sensitive current transformer with integrated flux conditioner used with Littelfuse relays to detect low levels of earth-leakage current.

Accessories



CBLTP
Twisted-pair wire for connection to CT.
Order in desired length in meters.

Ordering Information

ORDERING NUMBER	TURNS RATIO	WINDOW SIZE, ID	WEIGHT
ELCT5-31	100:1	31mm (1.22 in)	127.0 g (0.28 lbs)
ELCT5-88	100:1	88mm (3.46 in)	635.0 g (1.40 lbs)
ELCT30-31	600:1	31mm (1.22 in)	131.5 g (0.29 lbs)
ELCT30-88	600:1	88mm (3.46 in)	680.4 g (1.50 lbs)

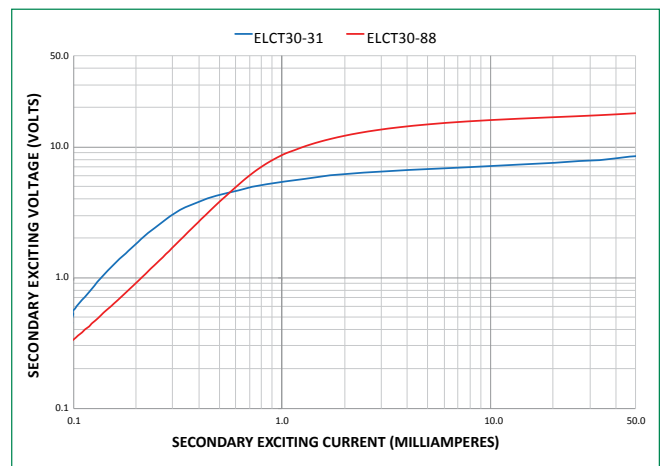
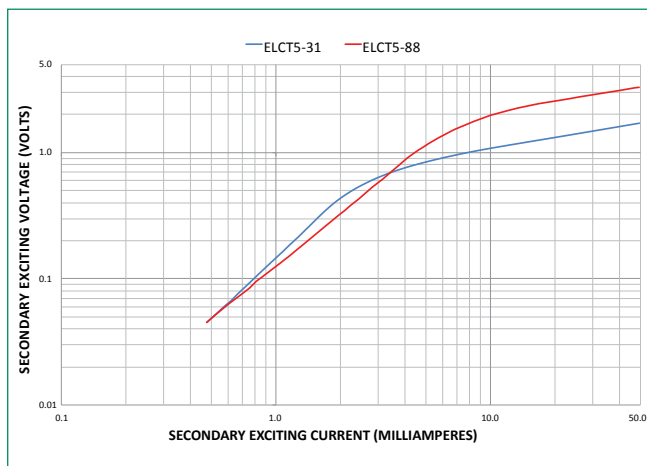
Specifications

Current Rating	ELCT5: 5:0.05 A ELCT30: 30:0.05 A
Accuracy	ELCT5: 3% @ 0.01 VA ELCT30: 3% @ 0.06 VA
Frequency	50 to 400 Hz
Insulation Level	600 V
Operating Temperature	-40 to 55 °C (-40 to 131 °F)
Application	SE-701
Wire Gauge	0.05–3.3mm ² (12–30 AWG)
Tightening Torque	0.5 N-m
Certification	UL, cUL, CE
Compliance	RoHS, IEC 61869-2, ANSI/IEEE C57.13

Note: One frequency response may be extended for specific product families

Recommended Relay

Series: SE-330
SE-704 (ELCT30-series)



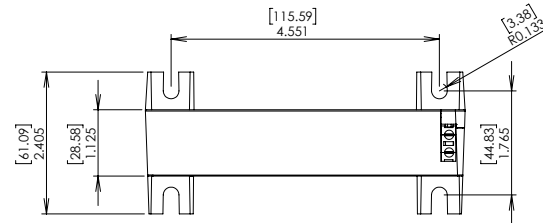
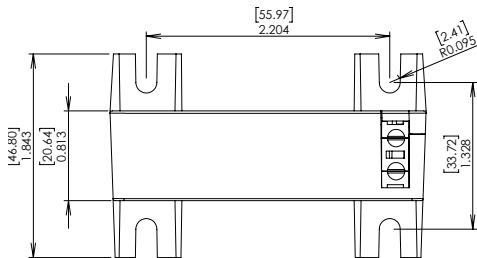
Protection Relays

ELCT SERIES

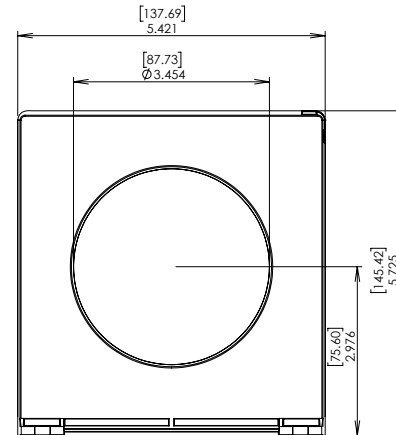
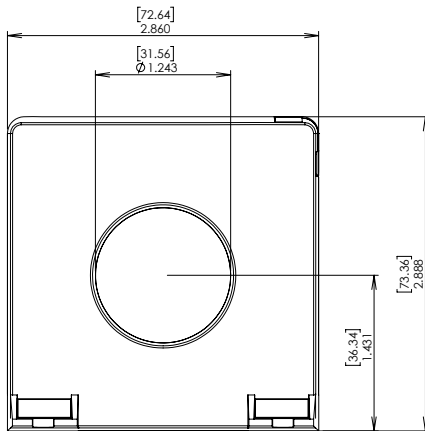
Dimensions and Mounting Diagram

Inches [millimeters]

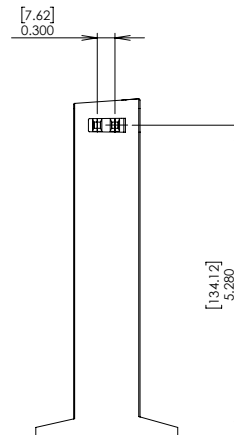
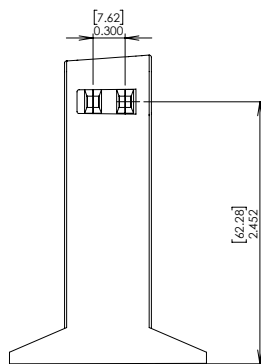
Mount the ELCT5-31 and ELCT30-31 using M5 or #10 screws.
 Mount the ELCT5-88 and ELCT30-88 using M6 or 1/4" screws.



TOP VIEW AND MOUNTING DETAIL



FRONT VIEW



ELCT5-31 and ELCT30-31

SIDE VIEW

ELCT5-88 and ELCT30-88

Disclaimer Notice – Information furnished is believed to be accurate and reliable. However, users should independently evaluate the suitability of and test each product selected for their own applications. Littelfuse products are not designed for, and may not be used in, all applications. Read complete Disclaimer Notice at www.littelfuse.com/product-disclaimer.