

Telecommunications Fuses

TLN Series

170 V dc • Current-Limiting • 1–600 A



Description

The fast-acting, current-limiting TLN series fuses are specifically designed for the protection of telecommunications DC power distribution circuits. These telecom fuses are available from 1 to 600 A rated at 170 V dc with an interrupting rating of 100 kA to fulfill your circuit protection needs. The TLN fuses are available in cartridge and round body blade styles, and their dimensions are similar to the 250 V Class R fuses.

Features & Benefits

| FEATURES | BENEFITS |
|------------------------------|---|
| Current-limiting | Reduces damage caused by heating and magnetic effects of short-circuit currents |
| Fast-acting | Provides protection for equipment requiring fast overload protection |
| POWR-GARD® technology | Ensures quality overcurrent protection |

Applications

- Telecommunications DC power distribution systems

Specifications

| | |
|----------------------------|----------|
| Voltage Rating | 170 V dc |
| Interrupting Rating | 100 kA |
| Ampere Range | 1–600 A |

Certification & Compliance

| | |
|-----------|------------------------------|
| UL | UL Recognized (File: E71611) |
|-----------|------------------------------|

Accessories

LFR25 series fuse holders

Telecommunications Fuses

TLN Series

Ordering Information

| AMPERE | CATALOG NUMBER | PRODUCT MARKING | PACK QUANTITY | ORDERING NUMBER | UPC |
|--------|----------------|-----------------|---------------|-----------------|-------------|
| 1 | TLN001 | TLN 1 | 10 | OTLN001.T | 07945806092 |
| 3 | TLN003 | TLN 3 | 10 | OTLN003.T | 07945806093 |
| 5 | TLN005 | TLN 5 | 10 | OTLN005.T | 07945806094 |
| 6 | TLN006 | TLN 6 | 10 | OTLN006.T | 07945806095 |
| 10 | TLN010 | TLN 10 | 10 | OTLN010.T | 07945806096 |
| 15 | TLN015 | TLN 15 | 10 | OTLN015.T | 07945806097 |
| 20 | TLN020 | TLN 20 | 10 | OTLN020.T | 07945806098 |
| 25 | TLN025 | TLN 25 | 10 | OTLN025.T | 07945806099 |
| 30 | TLN030 | TLN 30 | 10 | OTLN030.T | 07945806100 |
| 35 | TLN035 | TLN 35 | 10 | OTLN035.T | 07945806101 |
| 40 | TLN040 | TLN 40 | 10 | OTLN040.T | 07945806102 |
| 45 | TLN045 | TLN 45 | 10 | OTLN045.T | 07945806103 |
| 50 | TLN050 | TLN 50 | 10 | OTLN050.T | 07945806104 |
| 60 | TLN060 | TLN 60 | 10 | OTLN060.T | 07945806105 |
| 70 | TLN070 | TLN 70 | 5 | OTLN070.V | 07945806106 |
| 80 | TLN080 | TLN 80 | 5 | OTLN080.V | 07945806107 |
| 90 | TLN090 | TLN 90 | 5 | OTLN090.V | 07945806108 |
| 100 | TLN100 | TLN 100 | 5 | OTLN100.V | 07945806109 |
| 110 | TLN110 | TLN 110 | 1 | OTLN110.X | 07945806110 |
| 125 | TLN125 | TLN 125 | 1 | OTLN125.X | 07945806111 |
| 150 | TLN150 | TLN 150 | 1 | OTLN150.X | 07945806112 |
| 175 | TLN175 | TLN 175 | 1 | OTLN175.X | 07945806113 |
| 200 | TLN200 | TLN 200 | 1 | OTLN200.X | 07945806114 |
| 225 | TLN225 | TLN 225 | 1 | OTLN225.X | 07945806115 |
| 250 | TLN250 | TLN 250 | 1 | OTLN250.X | 07945806116 |
| 300 | TLN300 | TLN 300 | 1 | OTLN300.X | 07945806117 |
| 350 | TLN350 | TLN 350 | 1 | OTLN350.X | 07945806118 |
| 400 | TLN400 | TLN 400 | 1 | OTLN400.X | 07945806119 |
| 450 | TLN450 | TLN 450 | 1 | OTLN450.X | 07945806120 |
| 500 | TLN500 | TLN 500 | 1 | OTLN500.X | 07945806121 |
| 600 | TLN600 | TLN 600 | 1 | OTLN600.X | 07945806122 |

Replaces competitors' TPN and TGN Series.

Telecommunications Fuses

TLN Series

Dimensions Inches (mm)

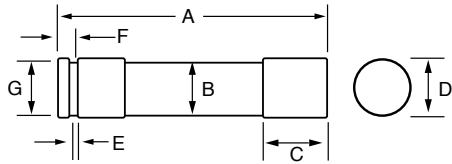


FIG. 1

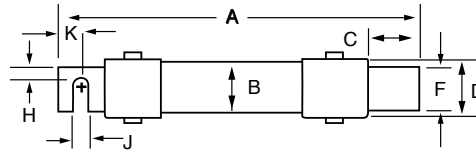


FIG. 2

Figure 1

| AMPS | DIMENSIONS INCHES (MM) | | | | | | | | | |
|-------|------------------------|---------------|---------------|-----------------|---------------|---------------|---------------|---|---|---|
| | A | B | C | D | E | F | G | H | J | K |
| 1-30 | 2 (50.8) | 1/2 (12.7) | 1/2 (12.7) | 9/16 (14.3) | 5/64 (2.0) | 5/32 (4.0) | 3/8 (9.5) | — | — | — |
| 35-60 | 3 (76.2) | 3/4 (19.1) | 5/8 (15.9) | 13/16 (20.6) | 3/32 (2.4) | 3/16 (4.8) | 5/8 (15.9) | — | — | — |

Figure 2

| AMPS | DIMENSIONS INCHES (MM) | | | | | | | | | |
|---------|------------------------|-----------------|-------------------|-------------------|---------------|-----------------|-------------------|----------------|-----------------|------------------|
| | A | B | C | D | E | F | G | H | J | K |
| 70-100 | 5/8 (149.2) | 1 (25.4) | 1 1/16 (27.0) | 1 1/16 (27.0) | 1/8 (3.2) | 3/4 (19.1) | 1 1/4 (31.6) | 1/4 (6.4) | 3/32 (7.1) | 1/2 (12.7) |
| 110-200 | 7/8 (181.0) | 1 1/2 (38.1) | 1 19/32 (37.3) | 1 19/32 (40.5) | 3/16 (4.8) | 1 1/8 (28.6) | 1 27/32 (46.8) | 7/16 (11.1) | 9/32 (7.1) | 1 1/16 (17.5) |
| 225-400 | 8 7/8 (219.1) | 2 (50.8) | 1 15/16 (49.2) | 2 3/32 (53.2) | 1/4 (6.4) | 1 5/8 (41.3) | 2 11/32 (59.5) | 5/8 (15.9) | 13/32 (10.3) | 15/16 (23.8) |
| 450-600 | 10 3/8 (263.5) | 2 1/2 (63.5) | 2 3/8 (60.3) | 2 19/32 (65.9) | 1/4 (6.4) | 2 (50.8) | 2 27/32 (72.2) | 3/4 (19.1) | 17/32 (13.5) | 1 1/8 (28.6) |

Disclaimer Notice – Information furnished is believed to be accurate and reliable. However, users should independently evaluate the suitability of and test each product selected for their own applications. Littelfuse products are not designed for, and may not be used in, all applications. Read complete Disclaimer Notice at www.littelfuse.com/product-disclaimer.