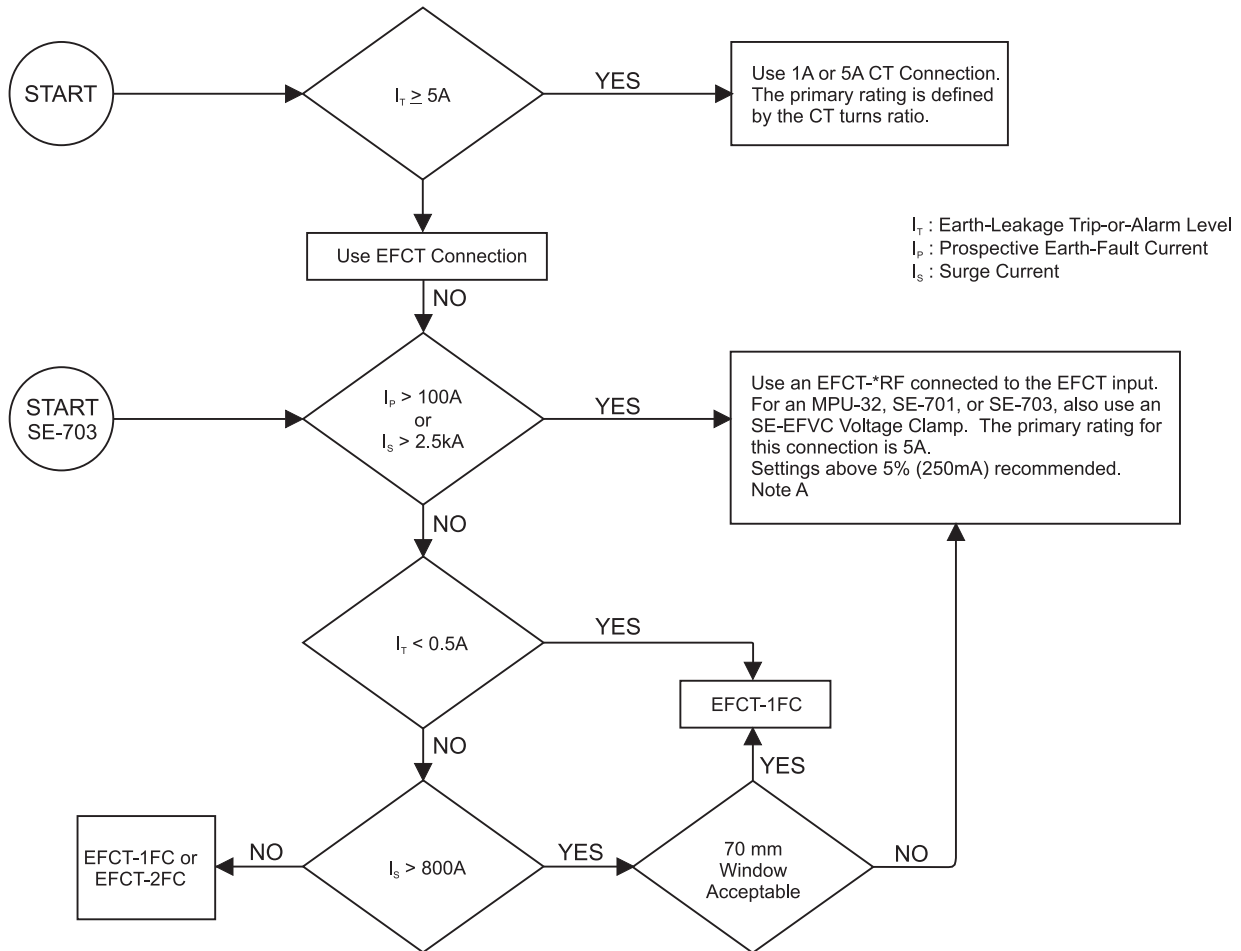


# EARTH-FAULT-CT SELECTION FLOWCHART

Applicable Monitors: MPU-32, MPS, SE-330, SE-701, SE-703



$I_t$  : Earth-Leakage Trip-or-Alarm Level  
 $I_p$  : Prospective Earth-Fault Current  
 $I_s$  : Surge Current

Note A: EFCT-5RF, 60 mm Window diameter.  
EFCT-6RF, 85mm Window diameter.  
EFCT-7RF, 112 mm Window diameter.  
EFCT-8RF, 140 mm Window diameter.  
EFCT-9RF, 160 mm Window diameter.  
EFCT-10RF, 200 mm Window diameter.  
Other 500:5 or 100:1 CT's may work, but the user should test to verify performance.

Note B: EFCT-1FC: CT complete with flux conditioner, 70 mm Window.  
EFCT-2FC: CT complete with flux conditioner, 140 mm Window.

See Monitoring Neutral-Grounding Resistor paper for ground-fault settings in resistance-grounded applications.