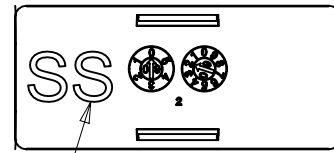
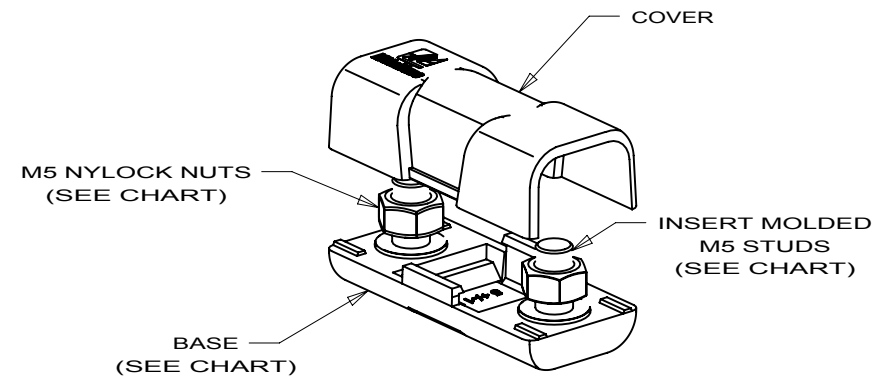
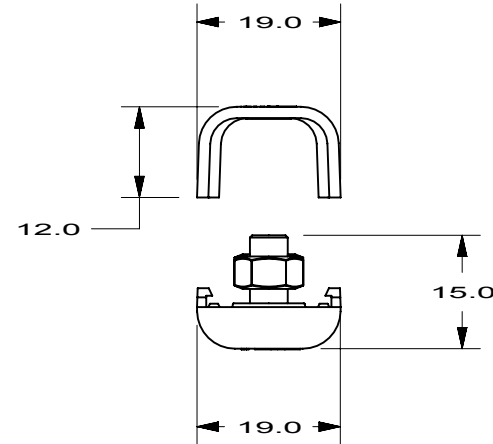
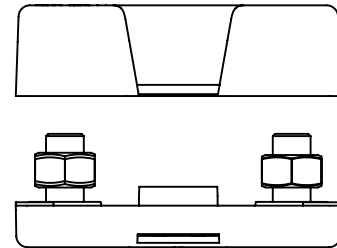
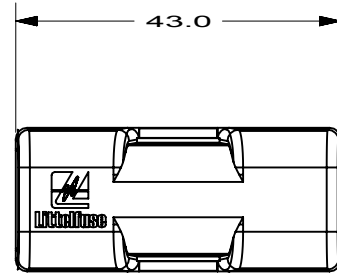
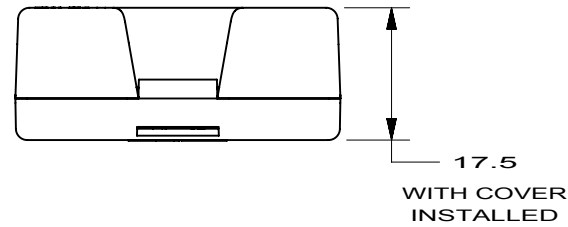


PART NUMBER	COMPONENTS			MARKING ON BASE
	COVER PART #	BASE PART #	HARDWARE	
04980921GXM5	498921-1	498921-2	ZINC-PLATED NYLOCK NUT	NONE
04980921GXM5-SS	498921-1	498921-3	STAINLESS-STEEL NYLOCK NUT	SS



MARKING
(SEE CHART)



- NOTES:
- MATERIAL:
BASE/COVER: UL94V-0 GLASS FILLED NYLON
STUDS: SEE CHART
NUTS: SEE CHART WITH NYLOK INSERTS
 - TORQUE RATING: 5 ± 1 Nm
 - FUSE RATING: 30-200A
 - WIRE SIZE: 14-4 AWG (2.5mm^2 - 20mm^2)
 - TEMPERATURE RATING: -40°C TO 125°C
 - PARTS ARE SHIPPED BULK WITH NUTS
FINGER TIGHTENED AND COVER UNINSTALLED.

METRIC
ASSEMBLY

UNLESS OTHERWISE SPECIFIED, DIMENSIONS ARE IN MILLIMETERS.
DIMENSIONS IN BRACKETS [] ARE INCHES

UNLESS OTHERWISE SPECIFIED, DIMENSIONS DO NOT INCLUDE PLATING.

CPK	DENOTES CPK DIMENSIONS. -MINIMUM CPK VALUE
ST	DENOTES A CHARACTERISTIC THAT PROVIDES AN INDICATION OF PROCESS PERFORMANCE. PROCEDURE FOR MEASUREMENT AND TRACKING TO BE DEFINED IN LITTELFUSE INSPECTION INSTRUCTIONS
CP	DENOTES CP DIMENSIONS. -MINIMUM CP VALUE MUST BE WITHIN THE DIMENSIONAL LIMITATIONS SHOWN ON DRAWING AND INITIALLY LOCATED TO ALLOW FOR MAXIMUM TOOL LIFE

BILL OF MATERIAL

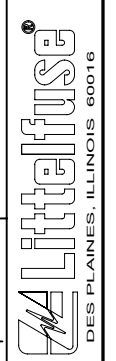
LTR	DATE	REVISION	CHK	APD	COPIES TO		MATERIAL SPEC	FINISH	SCALE	SUPER DR	FINISH GOOD WT	GRAMS/PIECE
					1	2						
A	05/20/10	SA289-RELEASE	GMB			18			1:1			
B	09/28/10	500860ERA-RELEASE 04980921GXM5-SS	GMB			19						
C	06/14/12	503912ECA-OBSOLETE 04980921GXM5-SS	FYUE			20						
						21						
						22						
						23						
						24						
						25						
						26						
						27						
						28						
						29						
						30						
						31						
						32						
						33						
						34						
						35						
						36						
						37						
						38						
						39						
						40						
						41						
						42						
						43						
						44						
						45						
						46						
						47						
						48						
						49						
						50						

TOLERANCES UNLESS OTHERWISE SPECIFIED (REF. ISO 2768-mK)

DIMENSION	0.5 - 3	3 - 6	6 - 30	30 - 120	120 - 400
TOLERANCE	± 0.1	± 0.1	± 0.2	± 0.3	± 0.5

3RD ANGLE PROJECTION

TITLE HOLDER MIDI, M5 NUT
WINSERT & COVER



REVISION C
DRWG. NO. OL-04980921GXM5
OUTLINE