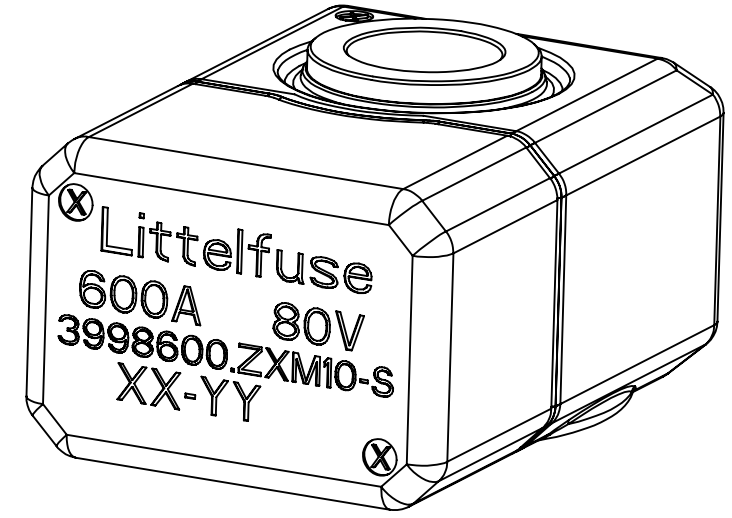
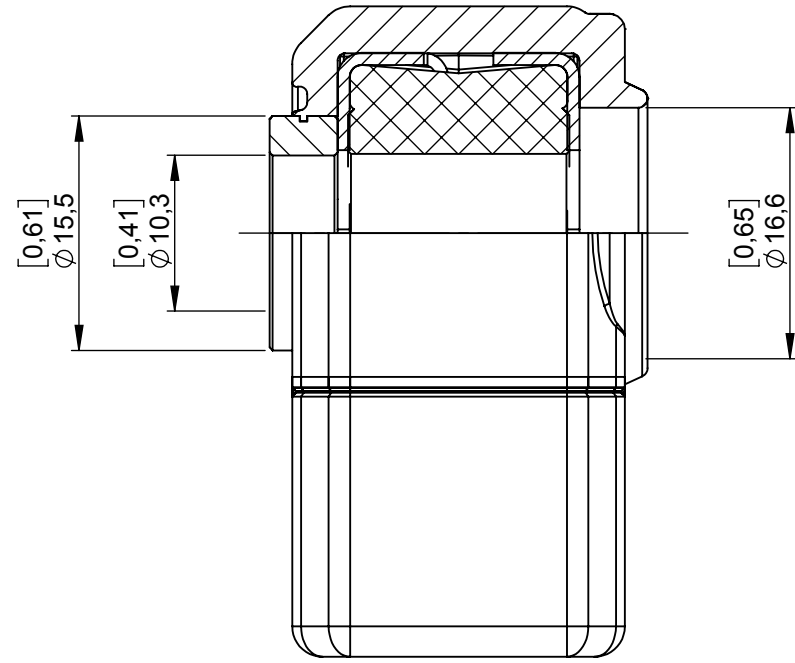
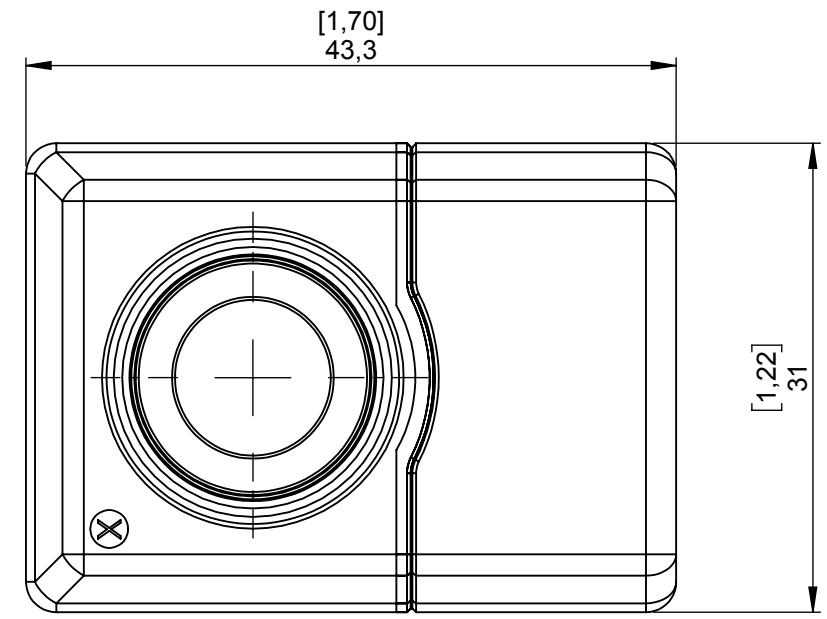
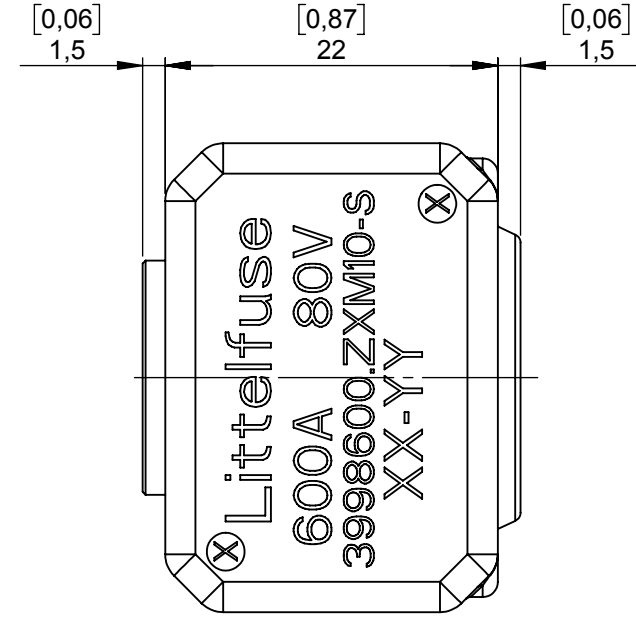


THIS DRAWING AND THE INFORMATION CONTAINED WITHIN IT ARE CONFIDENTIAL AND MAY NOT BE COPIED OR DISCLOSED WITHOUT THE WRITTEN PERMISSION OF LITTELFUSE.

REV	DATE	DESCRIPTION	GCF NUMB.	DESIGNED	CHECKED
D	07/01/2019	added sheet		M. Tinto	C. Crovetti



SAP drawing number
Material and treatments:

DIMENSIONS AND TOLERANCES IN MILLIMETERS, DEFINED ACCORDING TO ISO 1101-2017.						
●	FIT/ FUNCTION CRITICAL CHARACTERISTICS SYMBOL					
<S>	SAFETY/ COMPLIANCE CRITICAL CHARACTERISTICS SYMBOL					
CPK	DENOTES CPK DIMENSIONS MINIMUM CPK VALUE					
ST	DENOTES A CHARACTERISTIC THAT PROVIDES AN INDICATION OF PROCESS PERFORMANCE. PROCEDURE FOR MEASUREMENT AND TRACKING TO BE DEFINED IN LITTELFUSE INSPECTION INSTRUCTIONS					
CP	DENOTES CP DIMENSIONS, -MINIMUM CP VALUE MUST BE WITHIN THE DIMENSIONAL LIMITATIONS SHOWN ON DRAWING AND INITIALLY LOCATED TO ALLOW FOR MAXIMUM TOOL LIFE					

TOLERANCES UNLESS OTHERWISE SPECIFIED (REF.ISO2768-M) FOR METAL, REF SPI PLASTICS						
DIMENSION	0,5 - 3	3 - 6	6 - 30	30 - 120	120 - 400	ANGLE
TOLERANCES	±0.1	±0.1	±0.2	±0.3	±0.5	±0.5°

NAME	DATE	<p>Expertise Applied Answers Delivered</p>
DRAWN	D. Mantoan 07/06/2018	
CHECKED	-	
TITLE		ZCase 600A overmoulded
FORM NO: CVP-PE40-0013 REV A		
FIRST ANGLE PROJECTION		
SIZE: A3	DWG. NO. 3998600.ZXM10-S	REV. D
DO NOT SCALE DRAWING	SCALE 2:1	SHEET 1 OF 1