

Revision Control Record

Rev.	Description of Change	ECN No.	Date
P	REORAIN & REVISED NOTES	08680	11/25/08
R	ADDED 'X' & 'S' TO BACK VIEW	09671	12/06/08
S	BOM CHANGE	10163	4/20/10

Tolerances: Unless otherwise specifically noted, the following are default tolerances:

2-places ±.0005
3-places ±.0005
Angular ±.1

Notes: Shown in [] refers to equivalent English Dim for Metric; () refers to Metric Dim for English purposes only.

NOTE: All tolerances are Non-Cumulative.

FORM CHT-6 (2007) Used On or Ref.

PROPRIETARY INFORMATION
This Engineering Drawing, and the information contained herein, is proprietary to Cole Hersee Company and may not be disclosed, re-produced, or in any other way transferred or communicated to any other party without the express written consent of an authorized representative of Cole Hersee Company.

Special Characteristics:

Critical Characteristics, relating to Safety and/or Regulatory Compliance

Significant Characteristics relating to Process Control

Control Dimension relating to Form-Fit - Function as defined by Cole Hersee Company and/or the Customer



Cole Hersee Co.

38 Old Colony Ave., South Boston, MA, 02127
Phn: 617-288-2300 Web: www.colehersee.com

Description: **SWITCH, MASTER DISCONNECT**

Drawing / Part No.: **75903** Current Rev. **S**

Scale: 1:1

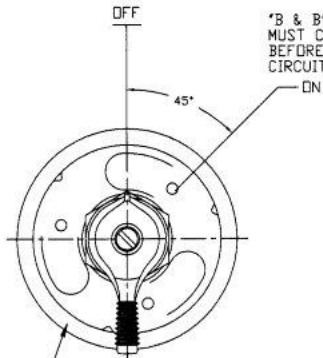
Drawn BY: JR

Date Drawn: 3/28/08

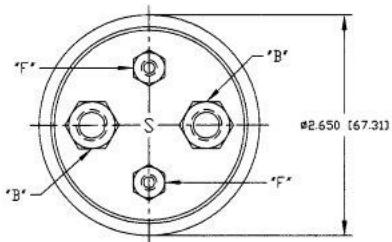
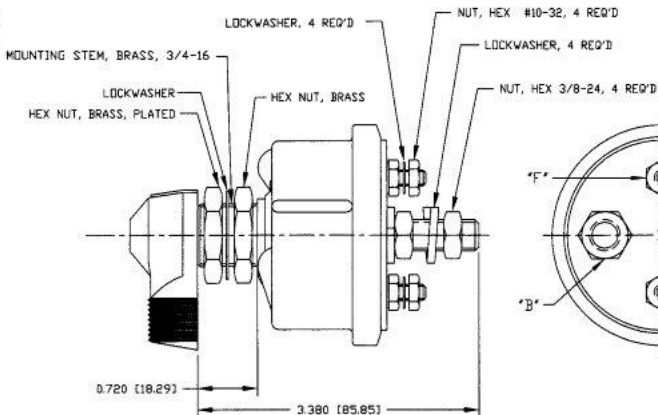
Pg. 1 of 1

'F & F' CIRCUIT
MUST OPEN
BEFORE 'B & B'
CIRCUIT

'B & B' CIRCUIT
MUST CLOSE
BEFORE 'F & F'
CIRCUIT



STAMP P/N AND DATE CODE
AT RANDOM LOCATIONS



NOTES:

1. ALL STEEL PARTS PLATED
2. ALL DIMENSIONS REFERENCE
3. FOR USE WITH ALTERNATOR OR GENERATOR SYSTEMS
4. RATINGS:
CONTINUOUS RATING:
6-12-24-36 VOLTS DC,
LARGE STUDS ('B' TERMINALS) 175 AMPS
SMALL STUDS ('F' TERMINALS) 20 AMPS
INTERMITTENT RATING:
6-12-24-36 VOLTS DC,
LARGE STUDS ('B' TERMINALS) 1000 AMPS
15 SEC 'ON', 5 MIN 'OFF'

Revision Control Record

Rev.	Description of Change	EOM No.	Date
R	PUT ON CAD	0502	6/28/05

TOLERANCES Unless otherwise specifically noted, the following are default tolerances:

- Typical Dimensional Tolerance = .015"
- Spring Dimensional Tolerance = .010"
- Spring Dimensional Tolerance = .005"
- Angular Dimensional Tolerance = 1/8 Deg.
- Holes: Refer to applicable English Dimensional Tolerances for HOLE. All dimensions are Hole-Coordinate, unless otherwise specified.

Dimensional Limits All dimensions are to be measured to feature except those shown in brackets and are measured in millimeters.

FORM, FIT AND FINISH - All dimensions are to be measured to feature unless otherwise specified.

Used On
or Ref:

Scale **1:1**

PROPRIETARY INFORMATION This Engineering Drawing, and the information contained herein, is proprietary to Cole Hersee Company and may not be disclosed, re-produced, or in any other way transmitted or communicated to any other party without the express written consent of an authorized representative of Cole Hersee Company.

LEGAL NOTICE It is the responsibility of the individual user of this drawing to ensure that the model design number listed herein agrees with the revision level of the Controlled Document (Master Drawing). This is a NON-CONFORMING DOCUMENT unless otherwise specifically noted.

DO NOT SCALE - Dimensional relations may occur during printing/ reproduction.

Drawn **JR**

Date **3/28/99**

Design/Review/Check/Approve

Checked: (Name/Title) holding a Safety and/or Regulatory Compliance

Approved: (Name/Title) holding a Process Control (PC)

Control Document (Name/Title) holding a Customer

Note that the identification of any characteristics or being "Special" does not alter the requirements that are specified elsewhere in this drawing.

Responsible **NA**

Pg. 1 of 1

Cole Hersee Co.
20 Old Colony Ave., South Boston, MA, 02127
Phone 617-268-2100 Web www.colehersee.com

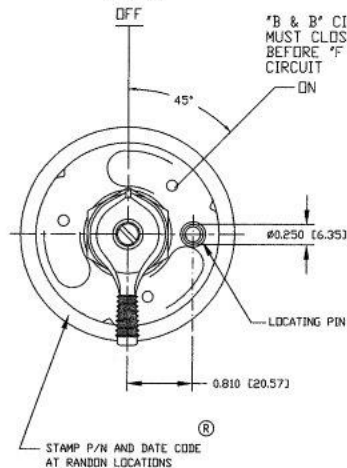
Description: **SW, MASTER DISCONNECT**

Drawing/
Part No. **75904**

Current Rev. **R**

'F' & 'F' CIRCUIT
MUST OPEN
BEFORE 'B' & 'B'
CIRCUIT

'B' & 'B' CIRCUIT
MUST CLOSE
BEFORE 'F' & 'F'
CIRCUIT



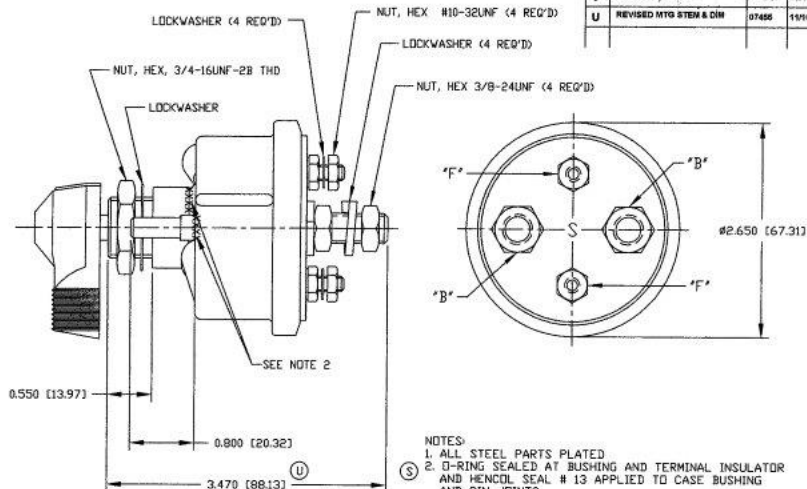
RATINGS:

CONTINUOUS RATING

6-12-24-36 VOLTS DC,
LARGE STUDS ('B' TERMINALS): 175 AMPS (T)
SMALL STUDS ('F' TERMINALS): 20 AMPS

INTERMITTENT RATING

6-12-24-36 VOLTS DC,
LARGE STUDS ('B' TERMINALS): 1000 AMPS (T)
15 SEC 'ON', 5 MIN 'OFF'



NOTES:

1. ALL STEEL PARTS PLATED
2. O-RING SEALED AT BUSHING AND TERMINAL INSULATOR AND HENCOL SEAL # 13 APPLIED TO CASE BUSHING AND PIN JOINTS
3. SILVER CONTACTS
4. ALL DIMENSIONS REFERENCE
5. FOR USE WITH ALTERNATOR OR GENERATOR SYSTEMS
6. SWITCH DESIGN TO MEET SAE J1455.4.4.3

Revision Control Record

Rev.	Description of Change	ECN No.	Date
R	ADDED NOTE WITH STAMP LOCATION	03186	4/6/02
S	REVISED NOTES	05142	3/21/04
T	REVISED RATING	05198	05/10/05
U	REVISED MTO STEM & CH	07455	11/6/07

Dimensions: Unless otherwise specifically noted, the following are SAE dimensions:
 * 2 unless otherwise specified
 * Surface Finish: Ra 3.2
 * All gear dimensions to 12.5 μm
 * Metric: Refer to applicable English-Metric Conversion Table
 * NOTE: All dimensions are ASME Y14.5-2009.

ASSEMBLY: All dimensions are expressed in inches except those shown in boldface (metric equivalents) in millimeters.

2D: All dimensions are in inches unless otherwise specified. All units are in inches unless otherwise specified.

Used On: **1:1**

PROPRIETARY INFORMATION: This engineering drawing, and the information contained herein, is the property of Cole Hersee Company and may not be disclosed, reproduced, or in any other way transmitted or disseminated in any other form without the express written consent of an authorized representative of Cole Hersee Company.

DESIGN CONTROL: It is the responsibility of the individual(s) preparing this drawing to ensure that the stated engineering standard and system are the minimum level of the applicable engineering standard. This is a NON-CONTROLLED DOCUMENT unless otherwise specifically noted.

2D/3D DATA: Dimensional values may occur during printing/ reproduction.

Drawn By: **JK**

Check for Revised Characteristics:
 * Critical Characteristics, including to verify customer Regulatory Compliance
 * Significant Characteristics, including to Process Control (SPC)
 * Critical Dimensional Tolerances to Parts - (P) - Permitted as defined by Cole Hersee Company and/or the Customer

Check for the Identification of any Characteristics as being "Fixed": Does not affect the inspection of all specified dimensions & tolerances (see table 6).

Responsible Engineer: **Pg. 1 of 1**

Cole Hersee Co.
 30 Old Colony Ave., South Boston, MA, 02127
 Phone 617-359-2100 Web: www.colehersee.com

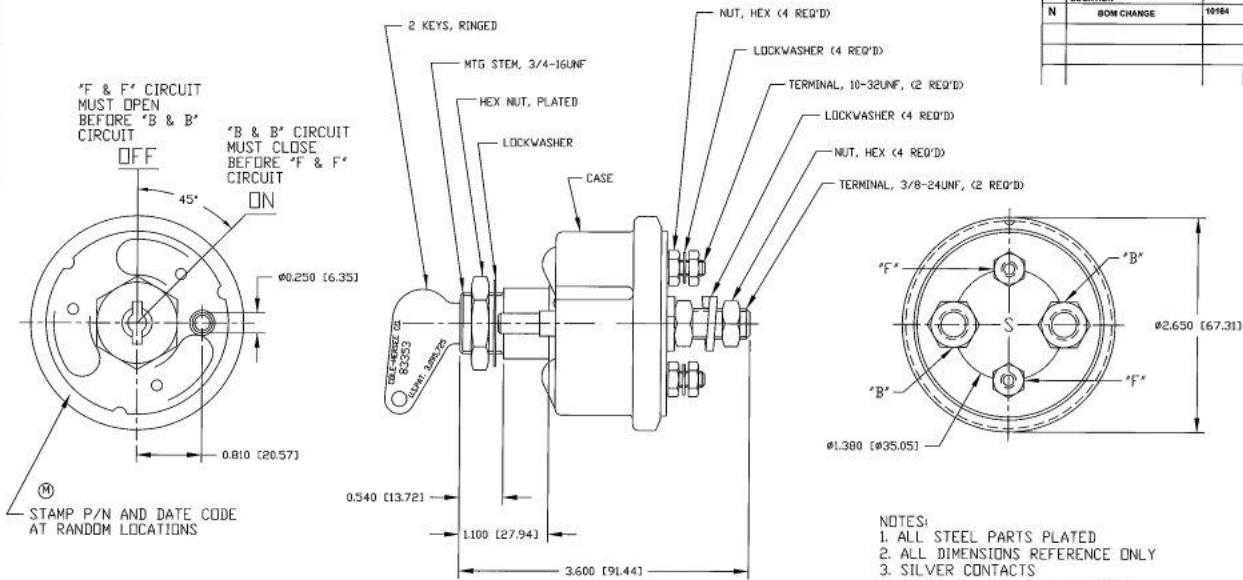
SW, MASTER DISCONNECT

Drawn/Part No.: **75904-01**

Current Rev.: **U**

Revision Control Record

Rev.	Description of Change	ECN No.	Date
M	ADDED NOTE WITH STAMP LOCATION	02168	4/9/02
N	BOM CHANGE	10184	4/30/10



NOTES:

1. ALL STEEL PARTS PLATED
2. ALL DIMENSIONS REFERENCE ONLY
3. SILVER CONTACTS
4. FOR USE WITH ALTERNATOR OR GENERATOR SYSTEMS

Tolerances: Unless otherwise specifically noted, the following are used:

- Surface Dimensional Tolerances: ±.005"
- Surface Dimensional Tolerances: ±.005"
- Angular Dimensions: ± 1.0 Deg
- Holes: Refer to applicable English Dimension Tables
- Note: All references are Non-Cumulative, etc.

Dimensional Units: All dimensions are expressed in inches unless otherwise is specifically noted as expressed in millimeters.

REF: (see Appendix 2) - Non-Tolerance Reference Dimensions, unless for identification purposes only.

Used On:

Scale: **1:1**

Drawn By: **CF**

Date Drawn: **6/27/69**

Responsible Engineer:

Pg. 1 of 1

Design/Engineering: This Engineering Drawing, and the information contained therein, is the property of Cole Hersee Company and shall not be disclosed, in any form or by any other means, without the express written consent of Cole Hersee Company.

DESIGN CENTER: It is the responsibility of the individual using this drawing, and the information contained therein, to verify that the design and dimensions of the product being manufactured conform to the design and dimensions of the product being manufactured.

DO NOT SCALE: Dimensional values may occur during parting/production.

For Additional Characteristics:

- Critical Characteristics, relating to Safety and/or Performance Characteristics
- Significant Characteristics relating to Process Control (IPC)

General Dimension relating to Face - F/A - Fluctuation as defined by Cole Hersee Customer and/or the Customer.

Note that the Size/Location of any Characteristics as being "Applied" does not allow the implement of that size/location dimension & tolerance (see the end).



Cole Hersee Co.

20 Old Colony Ave., South Boston, MA, 02127
Phone: 617-268-2100 Web: www.colehersee.com

Description:

SWITCH, MASTER DISCONNECT

Drawing / Part No.:

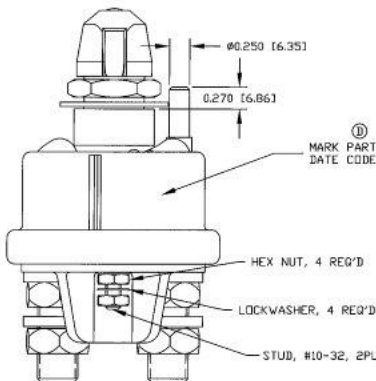
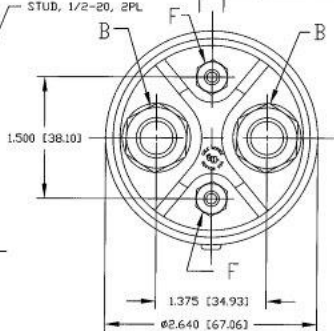
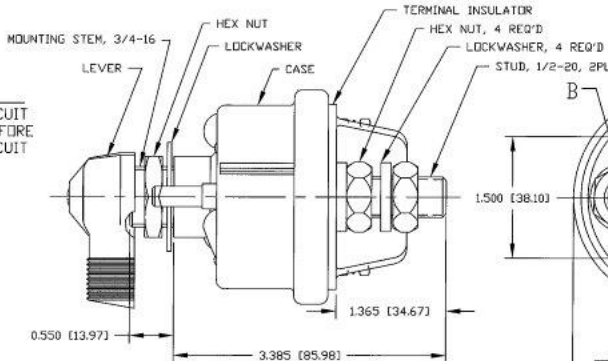
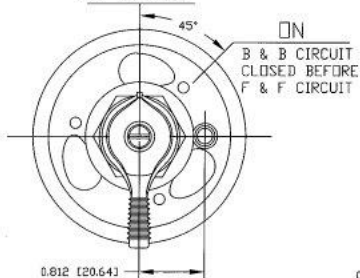
75904-02

Current Rev.:

N

©
D

OFF
F & F CIRCUIT
OPEN BEFORE
B & B CIRCUIT



① MARK PART NUMBER & DATE CODE ON THIS SURFACE

Revision Control Record			
Rev.	Description of Change	ECN No.	Date
B	BOM CHANGE	06273	08/17/06
C	RELOCATED DATE CODE	09162	3/28/08
D	MOVED DATE CODE TO SIDE OF CASE	10331	9/16/10

- NOTES:
1. ALL STEEL PARTS PLATED
 2. ALL DIMENSIONS ARE REFERENCE ONLY
 3. SEALS BETWEEN SHAFT & MOUNTING STEM CASE & TERMINAL INSULATOR & 1/2-20 STUDS
 4. RATING: 6, 12, 24, & 36 VOLTS DC
"B" STUDS: INTERMITTENT DUTY 2000 AMPS
30 SECONDS "ON", 3 MINUTES "OFF"
CONTINUOUS DUTY 300 AMPS
"F" STUDS: 20 AMPS

TOLERANCES - Unless otherwise specifically noted, the following are to be used:
- Fit and Finish: Subcontractor
- System Electrical Dimensions: ±0.005"
- System Electrical Dimensions: ±0.008"
- Angular Dimensions: ±1.0 Deg.
- Holes: Refer to applicable English Dimensional Tolerances (see NOTE). All tolerances are Non-Dimensional.

FINISHES - All dimensions are expressed in inches unless otherwise shown in brackets and are expressed in millimeters.

WELDING - See applicable drawings for welding specifications.

Used On: EX23570F
Scale: 1:1

ENGINEERING APPROVAL - This Engineering Drawing, and the other documents associated therewith, are prepared by Cole Hersee Company and may not be distributed, reproduced, or copied after they are modified for customer material or are other parts without the express written consent of our authorized representative or Cole Hersee Company.

REVISION CONTROL - It is the responsibility of the individual using a drawing to identify the revision to use and the correct engineering drawing to use with the revision level of the Customer Drawing. This is the responsibility of the individual using the drawing.

Drawn By: DPS
Date: 03/23/95

QUALITY CONTROL:

- ① Critical Characteristics - adding in Safety order/Regulatory Compliance
- ② Significant Characteristics relating to Process Control (PC)
- ③ Control Characteristics relating to Form - FFA - Functions as defined by Cole Hersee Company and/or the Customer.

Note that the identification of any Characteristics as being "Special" does not alter the requirement that ALL specified Characteristics be measured and controlled.

Responsible Engineer: NA
Pg. 1 of 1

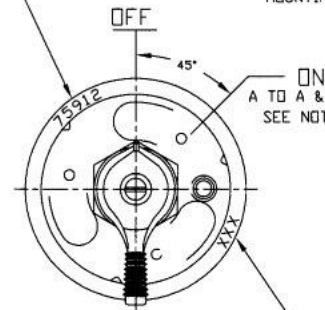
Cole Hersee Co.
20 Old Colony Ave., South Boston, MA, 02127
Phone: 617-268-2100 Web: www.colehersee.com

Designation: **MASTER DISCONNECT SW**
Drawing / Part No.: **75907**
D

Revision Control Record

Rev.	Description of Change	ECN No.	Date
A	RELEASED	04337	09/22/04
B	WAS 48 VDC, WIRING INFO	05154	04/05/05

PART NUMBER LOCATED AT RANDOM



DATE CODE LOCATED AT RANDOM

MOUNTING STEM, 3/4-16

LEVER

ON
A TO A & B TO B
SEE NOTE 3HEX NUT
LOCKWASHER

CASE

HEX NUT, 3/8-24, BRASS, 8 PLACES

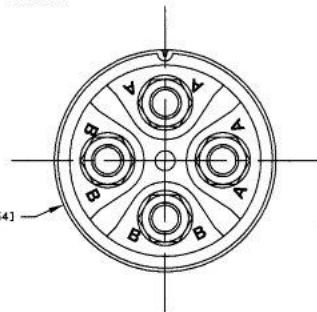
LOCKWASHER, 8 PLACES

STUD, 3/8-24, 4 PLACES

0.55 [13.97]

2.0 [50.21]

1.00 [25.40]



NOTES: (B)

- CONTACT RATING: 125 AMPS CONTINUOUS, 750 INTERMITTENT (15 SECONDS "ON", 5 MINUTES OFF) 12 TO 36 VDC (CARRY ONLY)
- SILVER CONTACT SURFACES
- A POLE AND B POLE ARE SEPARATE INSULATED POLES
- OPERATING TEMPERATURE RANGE: -40° C THROUGH +85° C
- O-RING SEAL @ MOUNTING STEM
- GASKET SEAL @ TERMINAL INSULATOR
- HENCOL SEAL @ CASE, MOUNTING STEM & LOCATING PIN
- MOUNTING TORQUE: 20 FT. LBS. (27 Nm)
- STUD TORQUE: 4.42-7.37 FT. LBS. (6-10 Nm)
- ALL STEEL PARTS ARE PLATED
- ALL DIMENSIONS ARE FOR REFERENCE ONLY
- COMPATIBLE WITH COLE HERSEE LOCKOUT KITS 24505 & -01, FACE PLATE P/N 82065-02 & CABLE TERMINALS P/N 3188

Dimensions: Unless otherwise specifically noted, the following are standard dimensions:
 1. Spacing Dimension: Dimensions in .005"
 2. Surface Finish: Dimensions in .005"
 3. Angular Dimension: 30 to 150 deg.
 4. Material: Refer to applicable English Dimensional Tolerances
 *** NOTE: All dimensions are in inches unless otherwise specified. ***

Interference: All dimensions are expressed in inches unless otherwise specified in brackets (mm) are expressed in millimeters.

WARRANTY: Cole Hersee Company warrants that the product is free from defects in material and workmanship under normal use and service for a period of one year from the date of purchase.

Used On: **EX27891** Box: **1:1**

PROFESSIONAL APPROVAL: This Engineering Drawing and the associated dimensions conform to the requirements of the American Society of Mechanical Engineers (ASME) Y14.5-2009 and are approved for use by the undersigned professional engineer.
 Signature: _____
 Title: _____
 Date: _____

DESIGN CONTROL: It is the responsibility of the end user to verify that the product conforms to the requirements of the drawing and that the product is suitable for use in the intended application. The user is responsible for any modifications to the product or its use.

Drawn: **JJC** Date: **08/31/04**
 By: _____

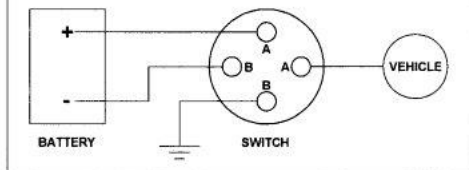
See the Special Characteristics:

- ⊕ Critical Characteristics, relating to Safety and/or Regulatory Compliance
- ⊗ Significant Characteristics, relating to Process Control (SPC)
- ⊕ Control Dimension relating to Form, Fit, Function as defined by Cole Hersee Company and/or the Customer.

Please take the identification of any Characteristics as being "Special" does not alter the requirement that ALL specified dimensions & tolerances must be met.

Responsible: **JJC** Pg. 1 of 1

WIRING INFORMATION



Cole Hersee Co.

20 0th Colony Ave., South Boston, MA, 02127
 Phone 977-366-5100 Web www.colehersee.com

Description:

SW, MASTER DISCONNECT DPST

Drawing / Part No.

75912

Current Rev.

B