

50001

SCREW STEEL 8 32 UNC-2A X 1/4 LG (2 REQ'D)

L' WASHER, STEEL (2 REQ'D)

(K) TERMINAL, BRASS (2 REQ'D)

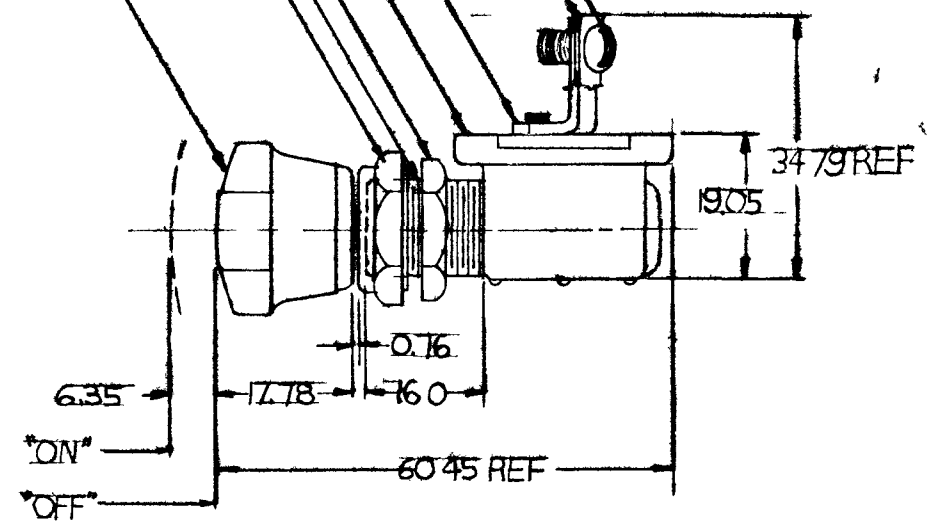
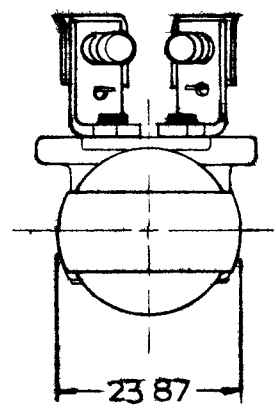
CASE, STEEL

(C) HEX NUT ZINC PLT

BUSHING - BRASS 1/2 20 UNF 2A THD

FACE NUT BRASS-CHROME PLT

KNOB, BLACK



NOTE

(1) ALL STEEL PARTS PLATED

2) SILVER LAMINATED CONTACT SURFACES

(3) KNOB AND HARDWARE SHIPPED LOOSE DO NOT SCALE

METRIC

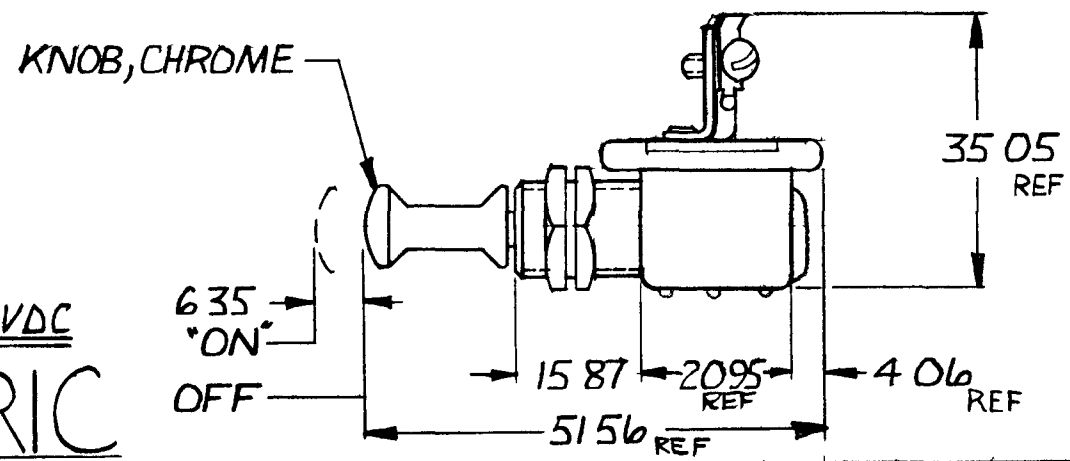
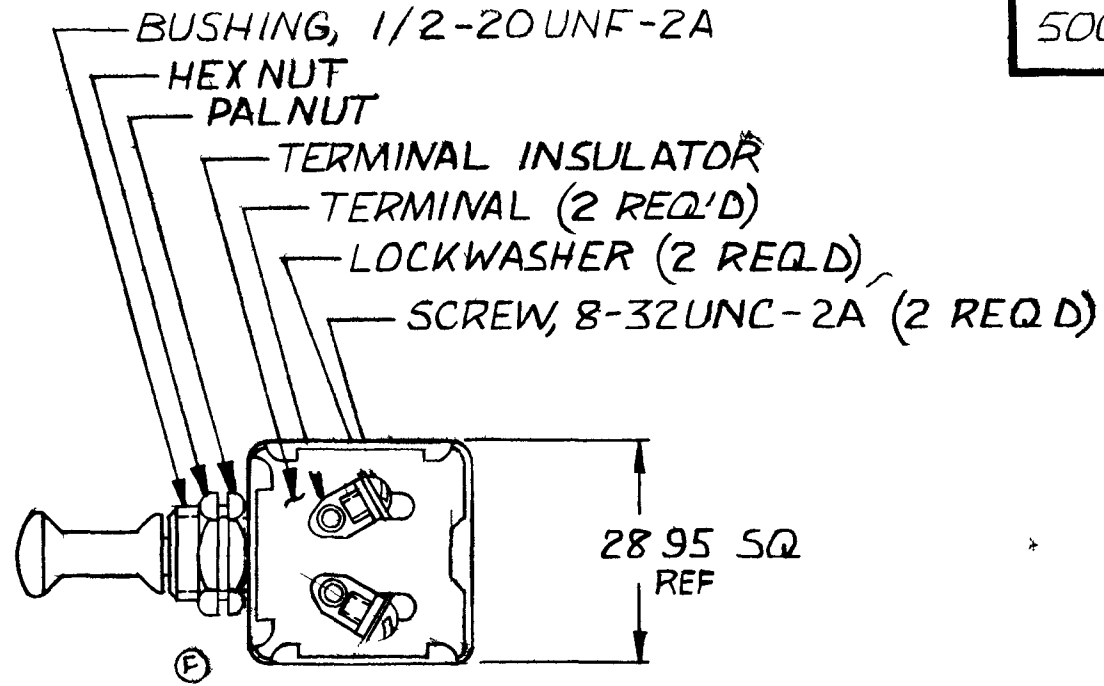
LET	WAS	DATE	BY	LET	WAS	DATE	BY	MATERIAL	W	EA	✓	✓	FULL	DATE DRAWN
				K	ECN 98578	8/019	WL							1 20 53
				J	ECN 416 CUTOUT	1.23 92	J P	FINISH	COLE HERSEE COMPANY BOSTON MASS 02127 USA				DATE BLUEPRINT	
				H	ZINC 25234	12/23/92	TH							
				G	REV/2097	10 06	CS	TOLERANCES	PUSH - PULL SW				50001	
				L	ECN # 00325	4/5/00	MAK	FRACTIONAL ±						
				F	NO CHANGE	12 13 77	DAV	DECIMAL ±0.25						

COLE HERSEE CO

VI	IN
0.25	010
0.76	03
6.35	25
6.00	63
7.78	70
19.05	75
23.87	94
34.79	1 37
60.45	2.38

25 010
 4 06 120
 6 75 250
 15 87 625
 20 95 825
 23 95 140
 35 05 380
 51 56 2030

50002



20 AMPS @ 12VDC
METRIC

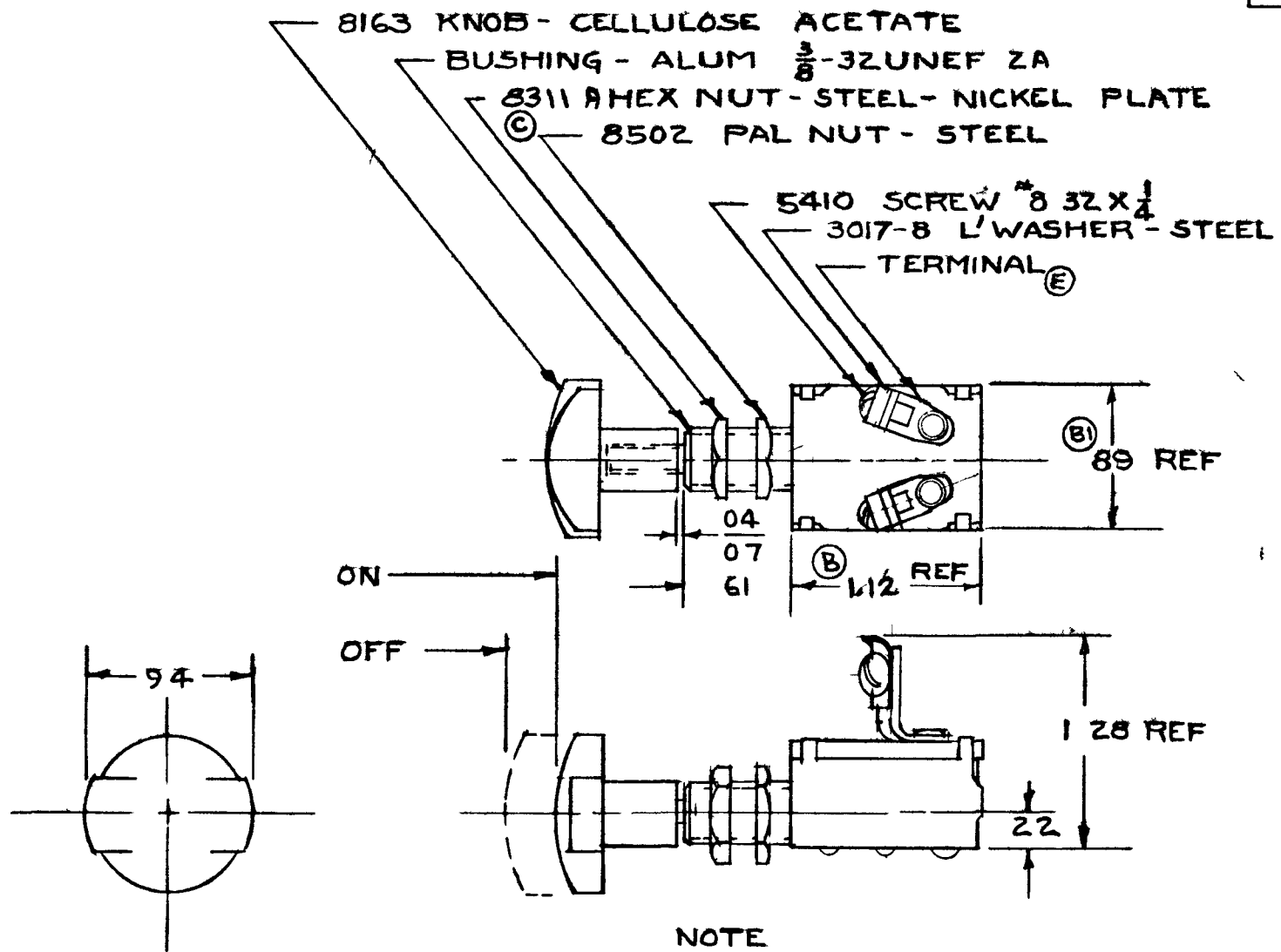
NOTE
 1 SILVERED CONTACT SURFACES
 2 ALL STEEL PARTS PLATED
 3 ALL PARTS MUST BE ASSEMBLED DO NOT SCALE

LET	WAS	DATE	BY	LET	WAS	DATE	BY	MATERIAL	W	PPRV	SC LE	DATE DRAWN	
								11	PJB	826-80	11	1-20-53	
								FINISH	 Cole Hersee Co. <small>ON SOU BO ON MA</small>			DATE BLUEPRINT	
				G	E N #99174	5/11/54	RF	TOLERANCES				PUSH-PULL SWITCH	50002
				F	ECN 27164 ADD CUTOUTS	2/23/58	JH	DECIMAL ±					
				E	REDRAWN	8 2 81	LS	METRIC ± 25					

CH 188(4 78)

50046

COLE-HERSEE CO



NOTE
 (C) ALL STEEL PARTS PLATED

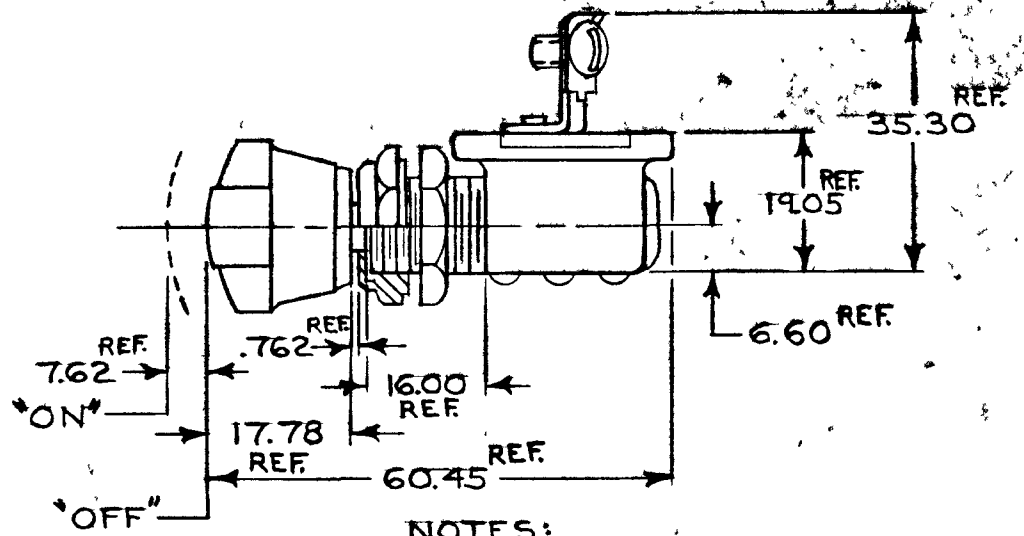
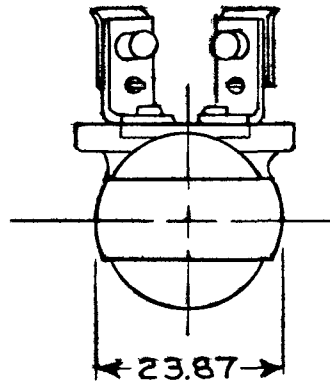
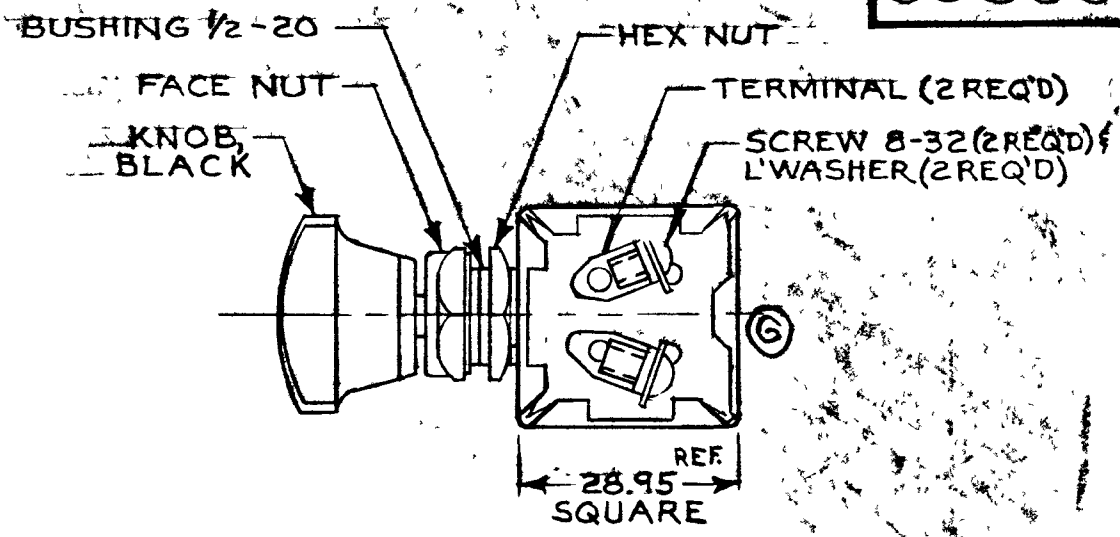
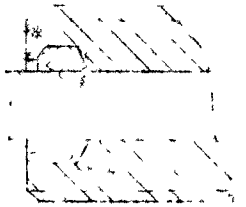
10 AMPS @ 12 VDC

DO NOT SCALE

LE	AS	DATE	AS	DATE	TE	WN	APP	SCA	WN
			E	ECN # 99282	6/30/99	AS	EA LPG	1=1	3-9-60
			D	CAD 2/INC 2/25239	10/22/92	TJH	COLE HERSEE COMPANY ST SS 02127		
			C	8311 18554	3-20-78	68			
			B1	113 88 17578	1-11-72	RF	PUSH-PULL SWITCH 50046		
			A	REDRAWN 16796	10-6-69	VH			

50066

MM IN
 .762 .030
 6.60 .260
 7.62 .300
 16.00 .630
 17.78 .700
 19.05 .750
 23.87 .940
 35.30 1.390
 60.45 2.380



④ 4 KNOB AND HARDWARE SHIPPED LOOSE

NOTES:
 1. SILVER CONTACT SURFACES.
 2. "O" RING SEAL IN BUSHING.
 3. GASKET SEAL AT TERMINAL INSULATOR.

DO NOT SCALE

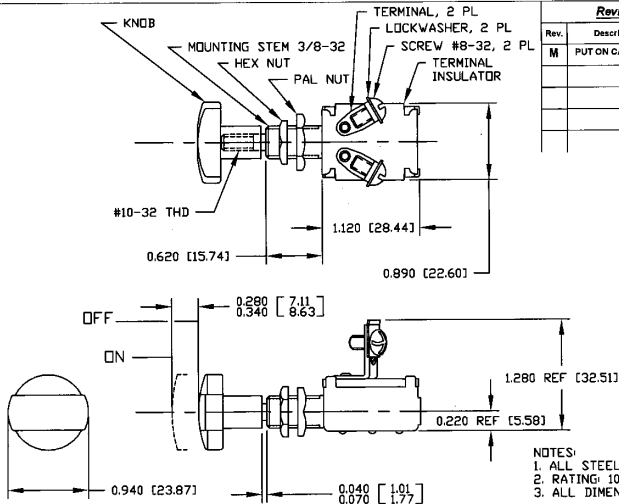
METRIC

LET	WAS	DATE	BY	LET	WAS	DATE	BY	MATERIAL	DRAWN	CHECKED	APPR'D	SCALE	DATE DRAWN			
								<i>H</i>	SB	<i>gll</i>		1:1	8-6-63			
								FINISH	 Cole Hersee Co. <small>70 OLD COLONY AVENUE SOUTH BOSTON MA U.S.A. 02127</small>				DATE BLUEPRINT			
				H	ECN # 99173	5/13/99	JPF	<i>H</i>								
				G	ECN # 27164 MOD CUTOUTS	2/24/98	Jin	TOLERANCES								
				F	REDRAWN	1-31-86	Yk	DECIMAL ± METRIC ±	SWITCH, PUSH PULL				50066			

CH-188(4-78)

Revision Control Record

Rev.	Description of Change	ECN No.	Date
M	PUT ON CAD	N/A	9/15/00



- NOTES:
1. ALL STEEL PARTS PLATED
 2. RATING: 10 AMPS @ 12 VDC
 3. ALL DIMENSIONS REFERENCE ONLY

Tolerances: Unless otherwise specifically noted, the following are default tolerances:

- 2-place Decimal Dimensions ±.02"
- 3-place Decimal Dimensions ±.005"
- Angular Dimensions ±1.0 Deg
- Metric: Refer to equivalent English Dimension Tolerance
- >>> NOTE: All tolerances are Non-Cumulative. <<<

PROPRIETARY INFORMATION: This Engineering Drawing, and the information contained herein, is proprietary to Cole Hersee Company and may not be disclosed, re-produced, or in any other way transmitted or communicated to any other party without the express written consent of an authorized representative of Cole Hersee Company.

DESIGN CONTROL: It is the responsibility of the individual using/referencing this drawing to assure that the noted design revision level agrees with the revision level of the Controlled Document (Master Drawing). This is a NON-CONTROLLED DOCUMENT unless otherwise specifically noted.

DO NOT SCALE: Dimensional variation may occur during printing/reproduction.

Key for Special Characteristics:

- Critical Characteristic, relating to Safety and/or Regulatory Compliance
- Significant Characteristic relating to Process Control (SPC)
- Control Dimension relating to Form - F1 - Function as defined by Cole Hersee Company and/or the Customer

(Note that the identification of any characteristic as being "Special" does not alter the requirement that ALL specified dimensions & tolerances must be met.)

Cole Hersee Co.



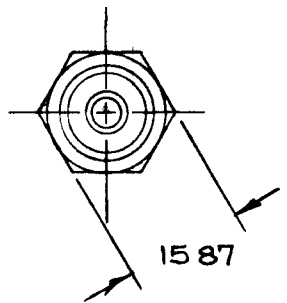
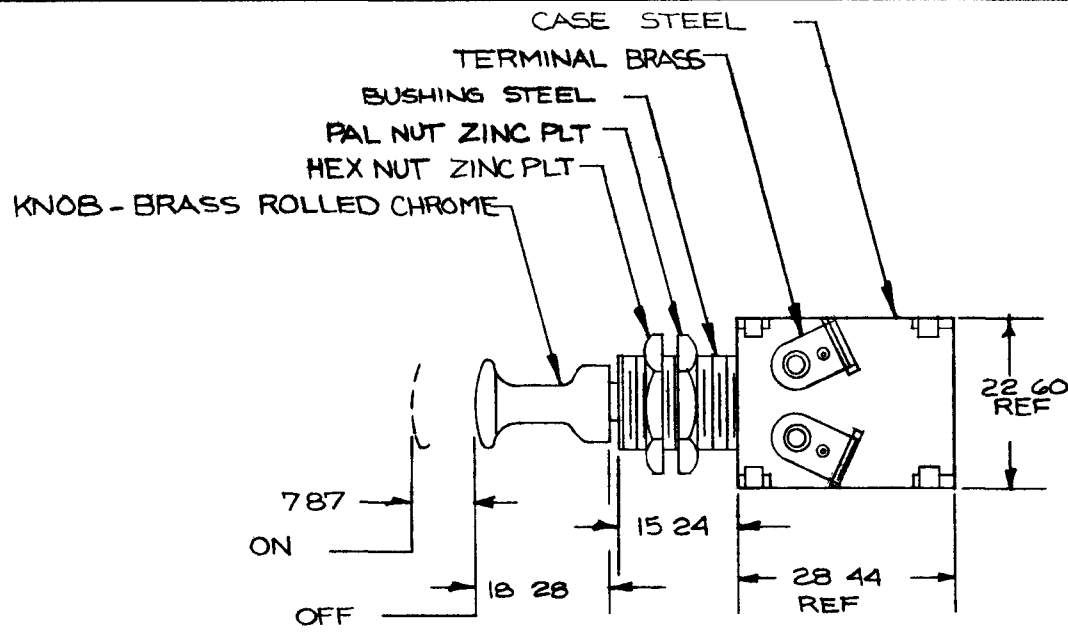
20 Old Colony Ave., South Boston, MA, 02127
 Phone: 617-268-2100 Web: www.colehersee.com

Description: SWITCH, PUSH-PULL	
Drawing / Part No.: 5007	Current Rev.: M

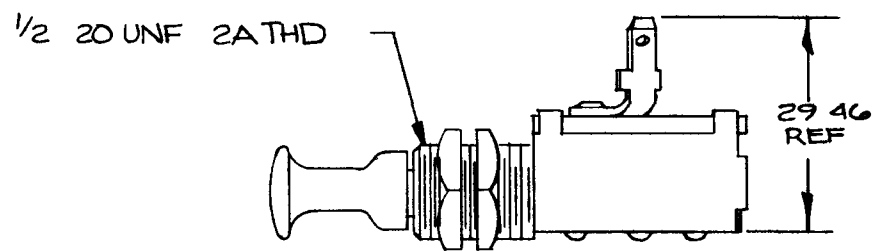
Used On or Ref:	Scale: 1:1	Drawn By: GP	Date: 2/18/99	Responsible Engineer: N/A	Pg. 1 of 1
-----------------	-------------------	---------------------	----------------------	----------------------------------	------------

50070

MM	IN
254	010
787	310
1574	620
1587	625
1828	720
2260	890
2844	112
2946	116



DETAIL SHOWN LESS KNOB



NOTE
 (E) 1 ALL STEEL PARTS PLATED
 2 10A @ 12 VOLTS

DO NOT SCALE

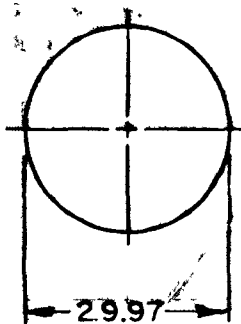
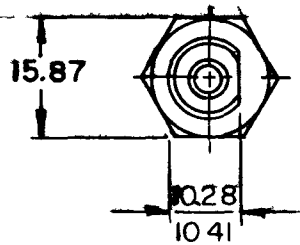
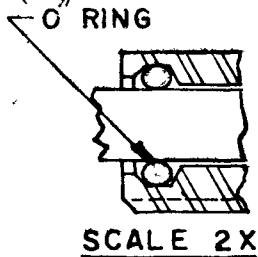
LET	WAS	DATE	BY	LET	WAS	DATE	BY	MATERIAL NOTED	W	PP	SC	DATE DRAWN
									S	AF	11	6 9 64
								FINISH				DATE BLUEPRINT
								TOLERANCES DECIMAL ± METRIC ± .254				PUSH PULL LIGHT SWITCH ASSY
				E	C ^D R / 25234	10/22/42	TJH					
				D	REDRAWN	8 10 88	BY					

CH 188(4 78)

COLE-HERSEE CO.

0.25	.010
2.28	.090
7.87	.310
9.65	.380
10.18	.405
10.41	.410
15.87	.625
20.82	.820
21.84	.860
26.67	1.050
29.97	1.180
60.72	2.390
31.75	1.250
6.35	.250

50077

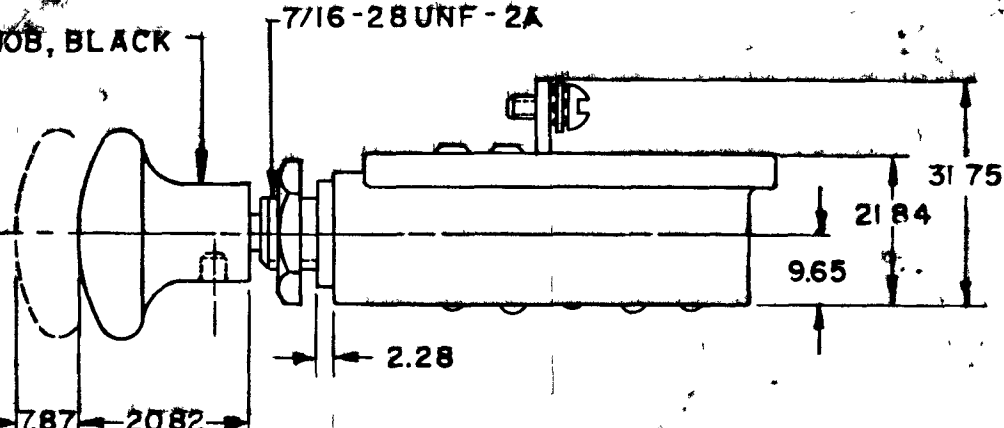


METRIC

10AMPS @ 12V DC

ON
OFF

KNOB, BLACK



SHAFT, STEEL
 ⑤ HEX-NUT, ZINC PLT.
 BUSHING, BRASS
 HOUSING, ZINC DIE CAST
 TERMINAL, STEEL
 SCREW-SEMS 8-32UNF-2AX
 6.35 LG. STEEL (2 REQ'D).

10-32 UNF-2A

7/16-28 UNF-2A

NOTES:

- ① ALL STEEL PARTS PLATED
 - ⑤ O-RING SEAL AT BUSHING, AND GASKET SEAL AT BOTTOM OF TERM INSUL.
- DO NOT SCALE

LET	WAS	DATE	BY	LET	WAS	DATE	BY	MATERIAL	DRAWN	CHECKED	APPRV D	SCALE	DATE DRAWN
								—//—	MF	4-18-77		FULL	6-24-65
								FINISH	COLE-HERSEE COMPANY				DATE BLUEPRINT
								—//—	BOSTON, MASS. 02127, U.S.A.				
				F	CAD ZINC 125234	11/20/92	JH	TOLERANCES	PANEL SWITCH				50077
				E	REV/20975	11-17-88	VB	FRACTIONAL ±					
				D	REDRAWN	4-12-78	VIC	DECIMAL ±0.25					

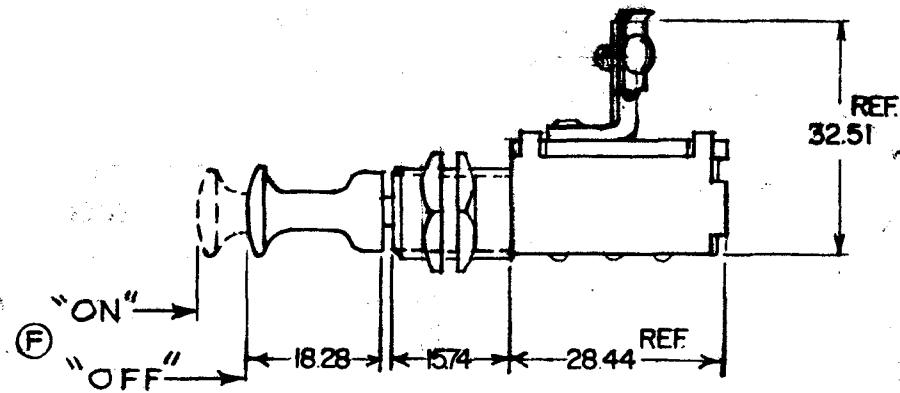
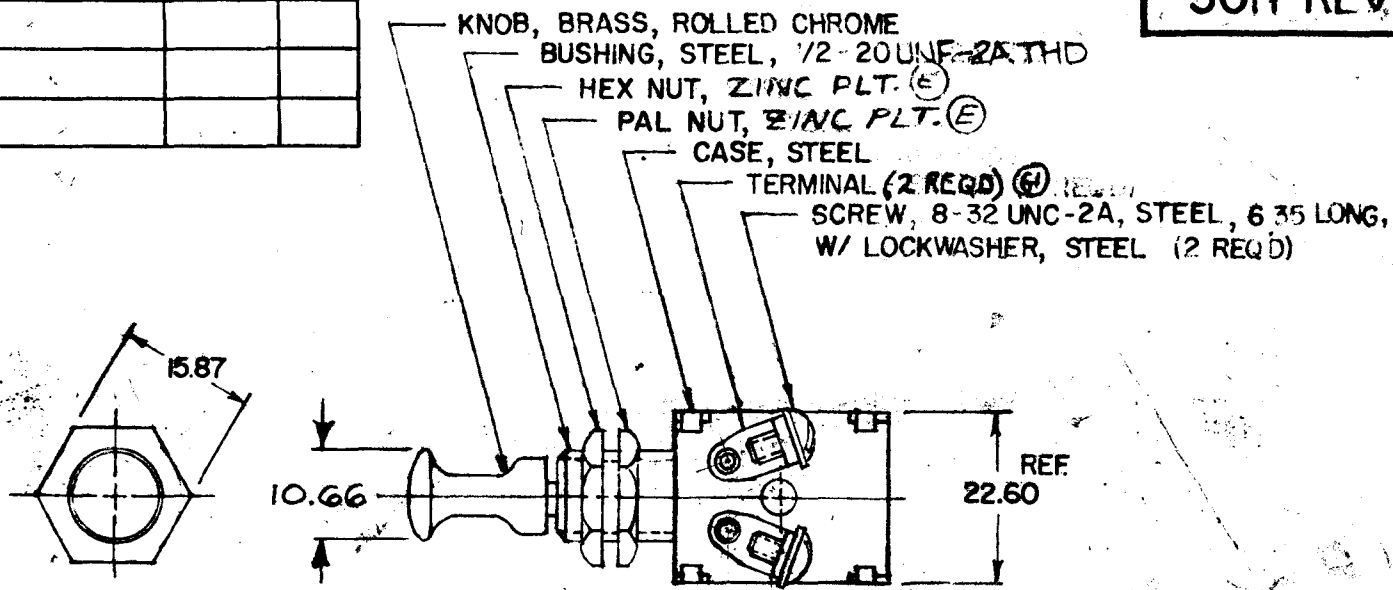
COLE-HERSEE CO.

MM
 .25
 6.35
 10.06
 15.74
 18.78
 22.60
 28.44
 32.51

IN
 .010
 .250
 .420
 .620
 .720
 .890
 1.120
 1.280

SEQ.	DEPT.	OPERATING INSTRUCTIONS	DIE	MACH.

5011 REV



METRIC

NOTE:
 (G) ALL STEEL PARTS PLATED INO PLT. W/
 DIMENSIONS TO CENTER LINE

DO NOT SCALE

LET	WAS	DATE	BY	LET	WAS	DATE	BY	MATERIAL	DRAWN	CHECKED	APPR'D.	SCALE	DATE DRAWN
									EHD	1-31-79		1:1	2-19-59
								STEEL (G) CADORZINC/25239 ADD ON/OFF/23176 REV/200815 REDRAWN					
								FINISH	COLE-HERSEE COMPANY BOSTON, MASS. 02127, U.S.A.				DATE BLUEPRINT
								TOLERANCES FRACTIONAL ± DECIMAL ±.25					PUSH-PULL SWITCH

SPAULDING CO., INC.