

08095800 & 08096590 BATTERY DISCONNECT SWITCHES

250A • SPST • IP65 • M10-M12 Studs • ADR Electronic/Electrical remote control



Description

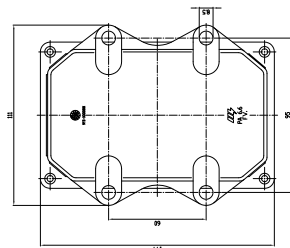
The range of single-pole electronic current isolating switches which are specifically designed for ADR equipped vehicles in accordance with ADR regulations on the subject of road transport of dangerous materials.

This electronic current isolating switches for ADR are produced in 4 different models: 12V and 24V with negative disconnection, and 12V and 24V with positive disconnection. In the event of a short circuit the device comes into action: the electronic control unit detects the drop of tension and immediately commands the opening of the contacts and the disconnecting of the battery to protect the various electric and electronic devices fitted to the vehicles.

Features/Benefits

- 250A continuous current rating
- Waterproof IP65

Mounting Diagram



Ordering Information

PART NUMBER	VOLTAGE	AMPERAGE	CIRCUITRY	MOUNTING	INGRESS	TERMINAL NUTS	IMAGE	DIAGRAM	NOTES
08095800	12V DC	250A	SPST	Bolt-Down	IP65	M10 Tin-plated brass	A	2	— disconnection 55 sec.
08095890	12V DC	250A	SPST	Bolt-Down	IP65	M10 Tin-plated brass	B	2	— disconnection 55 sec.
08095900	24V DC	250A	SPST	Bolt-Down	IP65	M10 Tin-plated brass	A	2	— disconnection 55 sec.
08095990	24V DC	250A	SPST	Bolt-Down	IP65	M10 Tin-plated brass	B	2	— disconnection 55 sec.
08096400	12V DC	250A	SPST	Bolt-Down	IP65	M10 Tin-plated brass	A	1	+ disconnection 55 sec.
08096490	12V DC	250A	SPST	Bolt-Down	IP65	M10 Tin-plated brass	B	1	+ disconnection 55 sec.
08096500	24V DC	250A	SPST	Bolt-Down	IP65	M10 Tin-plated brass	A	1	+ disconnection 55 sec.
08096590	24V DC	250A	SPST	Bolt-Down	IP65	M10 Tin-plated brass	B	1	+ disconnection 55 sec.
08096561	24V DC	250A	SPST	Bolt-Down	IP65	M10-M12 Tin-plated brass	D	3	+ disconnection 10 sec.
08096562	24V DC	250A	SPST	Bolt-Down	IP65	M10-M12 Tin-plated brass	C	4	+ disconnection 55 sec.
08096563	24V DC	250A	SPST	Bolt-Down	IP65	M10-M12 Tin-plated brass	C	4	+ disconnection 55 sec.

Specifications

Max Operating Voltage:	12V DC: 08095800-08095890-08096400-08096490 24V DC: 08095900-08095990-08096500-08096590-08096561-08096562-08096563
Max Continuous Current:	250A
Intermittent Current:	2500A at 3 sec
Operating Temp:	-40 °C to +85 °C
Ingress Protection:	IP65
Contacts:	Tin-plated Brass
Terminals:	M10 - M12 (brass)

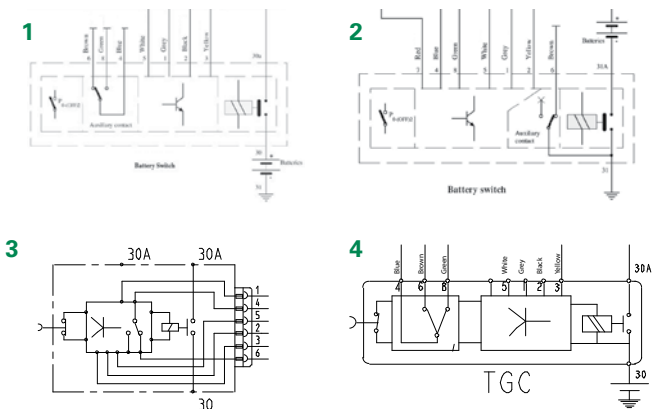
Applications

- Heavy trucks
- Buses
- Construction
- Commercial vehicles
- Ambulances
- Material Handling

Web Resources

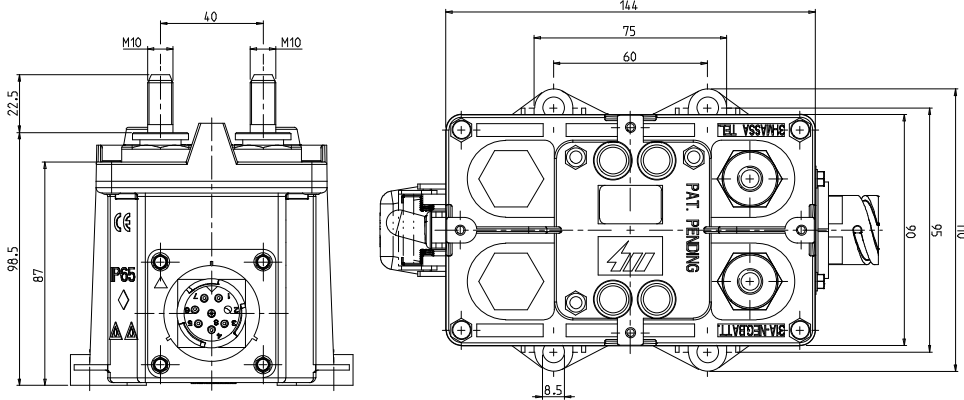
Download 2D print and technical resources at:
littelfuse.com/ManualBatterySwitches

Electrical Diagram

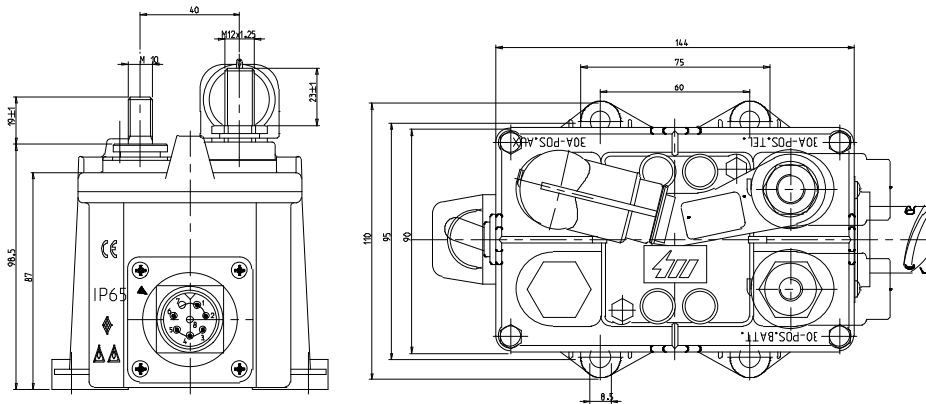


08095800 & 08096590 BATTERY DISCONNECT SWITCHES

Dimensions in millimeters



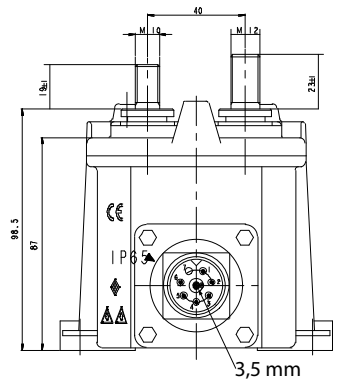
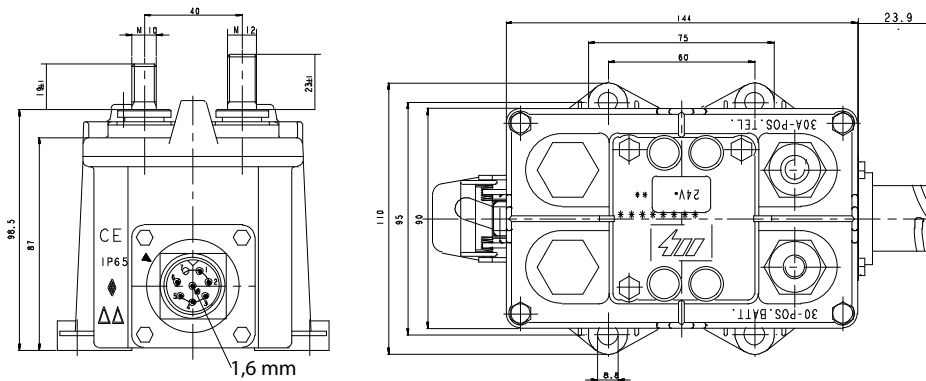
08095800-08095900
08095890-08095990
08096400-08096500
08096490-08096590



08096561

08096562

08096563



Visit Littelfuse.com for the most up-to-date product information. Littelfuse reserves the right to make product changes, without notice. Material in this document is as accurate as known at the time of publication.