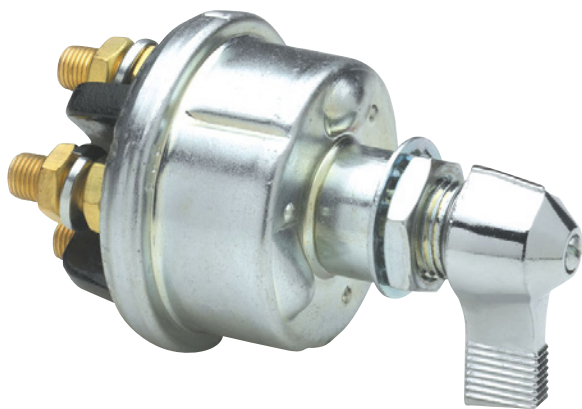


75912 HIGH AMP DOUBLE POLE MASTER DISCONNECT SWITCH



Description

Each pole handles 125A (continuous) at up to 36V DC.

Features and Benefits

- Controls two systems, or it can be used to disconnect both positive and negative of the same circuit (which is required in some countries.)
- Contact ratings: 125A continuous, 750A intermittent.
- Silver contact surfaces. Epoxy-sealed and gasket-sealed.
- Both poles are separately insulated.
- Compatible with Littelfuse lock-out kits.
- Four 3/8" -24 stud terminals. Lockwasher and two brass hexnuts per stud are provided.
- 3/4" -16 thread. Fits panels up through 1/4" (6.4mm).
- O-ring seal in mounting stem; gasket seal at terminal insulator. Epoxy seal at case, mounting stem and locating pin.
- Heavy duty plated steel case.

Specifications Overview

- Contact Rating:** 125A continuous, 750A intermittent; 15 sec On, 5 min Off. Up to 36V DC max, carry only.
- Mounting Torque:** 20ft lbs (27 Nm)
- Stud Torque:** 4.4 to 7.4 ft lbs (6-10Nm)
- Operating Temp:** -40° C to + 85° C

Accessories

- Compatible with lock-out kits 24505 & 24505-01
- Indexed Faceplate 82065-02
- Replacement Lever: 80101-B.

Web Resources

Download 2D print and technical resources at: littelfuse.com/75912

Ordering Information

PART NUMBER	DESCRIPTION
75912	DPST Master Disconnect Switch

Other Master Disconnect Switches

PART NUMBER	DESCRIPTION
75907 DPST	300A continuous at 12V DC
2484 SPST	175A continuous at 12V DC. UL & CE.
M-290-05 DPST	175A continuous at 12V DC. UL & CE.
75903 DPST	125A continuous at 12V DC. Also available 75904, with silver contacts.
75904-01 DPST	125A continuous at 12V DC. Weather-resistant.



Visit Littelfuse.com for the most up-to-date product information. Littelfuse products are designed for specific applications and should not be used for any purpose (including, without limitation, automotive applications) not expressly set forth in applicable Littelfuse product documentation. Warranties granted by Littelfuse shall be deemed void for products used for any purpose not expressly set forth in applicable Littelfuse product documentation. Littelfuse shall not be liable for any claims or damages arising out of products used in applications not expressly intended by Littelfuse as set forth in applicable Littelfuse product documentation.

Datasheet Replaces Hotfeed Number D-606