

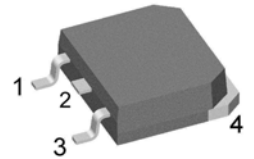
XPT IGBT

| | | |
|---------------|---|-------------|
| | | preliminary |
| V_{CES} | = | 1200V |
| I_{C25} | = | 9A |
| $V_{CE(sat)}$ | = | 1.8V |

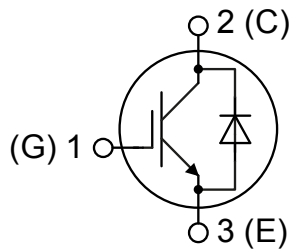
Copack

Part number

IXA4IF1200TC



Backside: collector



Features / Advantages:

- Easy paralleling due to the positive temperature coefficient of the on-state voltage
- Rugged XPT design (Xtreme light Punch Through) results in:
 - short circuit rated for 10 μ sec.
 - very low gate charge
 - low EMI
 - square RBSOA @ 3x Ic
- Thin wafer technology combined with the XPT design results in a competitive low VCE(sat)
- SONIC™ diode
 - fast and soft reverse recovery
 - low operating forward voltage

Applications:

- AC motor drives
- Solar inverter
- Medical equipment
- Uninterruptible power supply
- Air-conditioning systems
- Welding equipment
- Switched-mode and resonant-mode power supplies
- Inductive heating, cookers
- Pumps, Fans

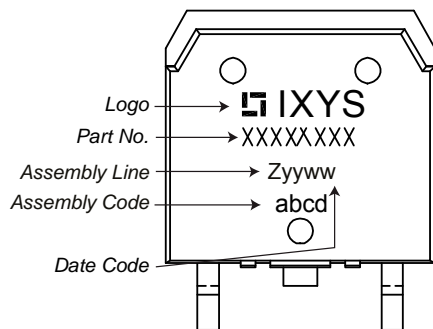
Package: TO-268AA (D3Pak)

- Industry standard outline
- RoHS compliant
- Epoxy meets UL 94V-0

| IGBT | | | | Ratings | | | |
|---------------|--|---|--------------------------------|---------|----------|---------------|--|
| Symbol | Definition | Conditions | min. | typ. | max. | Unit | |
| V_{CES} | collector emitter voltage | $T_{VJ} = 25^{\circ}\text{C}$ | | | 1200 | V | |
| V_{GES} | max. DC gate voltage | | | | ± 20 | V | |
| V_{GEM} | max. transient gate emitter voltage | | | | ± 30 | V | |
| I_{C25} | collector current | $T_C = 25^{\circ}\text{C}$ | | | 9 | A | |
| I_{C100} | | $T_C = 100^{\circ}\text{C}$ | | | 5 | A | |
| P_{tot} | total power dissipation | $T_C = 25^{\circ}\text{C}$ | | | 45 | W | |
| $V_{CE(sat)}$ | collector emitter saturation voltage | $I_C = 3\text{A}; V_{GE} = 15\text{V}$ | | 1.8 | 2.1 | V | |
| | | | | 2.1 | | V | |
| $V_{GE(th)}$ | gate emitter threshold voltage | $I_C = 0.1\text{mA}; V_{GE} = V_{CE}$ | 5.4 | 5.9 | 6.5 | V | |
| I_{CES} | collector emitter leakage current | $V_{CE} = V_{CES}; V_{GE} = 0\text{V}$ | | | 0.1 | mA | |
| | | | | 0.1 | | mA | |
| I_{GES} | gate emitter leakage current | $V_{GE} = \pm 20\text{V}$ | | | 500 | nA | |
| $Q_{G(on)}$ | total gate charge | $V_{CE} = 600\text{V}; V_{GE} = 15\text{V}; I_C = 3\text{A}$ | | 12 | | nC | |
| $t_{d(on)}$ | turn-on delay time | inductive load $V_{CE} = 600\text{V}; I_C = 3\text{A}$ $V_{GE} = \pm 15\text{V}; R_G = 330\Omega$ | | 70 | | ns | |
| t_r | current rise time | | $T_{VJ} = 125^{\circ}\text{C}$ | 40 | | ns | |
| $t_{d(off)}$ | turn-off delay time | | 250 | | ns | | |
| t_f | current fall time | | 100 | | ns | | |
| E_{on} | turn-on energy per pulse | | 0.4 | | mJ | | |
| E_{off} | turn-off energy per pulse | | 0.3 | | mJ | | |
| RBSOA | reverse bias safe operating area | $V_{GE} = \pm 15\text{V}; R_G = 330\Omega$ | | | | | |
| I_{CM} | | $V_{CEmax} = 1200\text{V}$ | | | 9 | A | |
| SCSOA | short circuit safe operating area | $V_{CEmax} = 900\text{V}$ | | | | | |
| t_{sc} | short circuit duration | $V_{CE} = 900\text{V}; V_{GE} = \pm 15\text{V}$ | | | 10 | μs | |
| I_{sc} | short circuit current | $R_G = 330\Omega; \text{non-repetitive}$ | | 12 | | A | |
| R_{thJC} | thermal resistance junction to case | | | | 2.7 | K/W | |
| R_{thCH} | thermal resistance case to heatsink | | | 0.15 | | K/W | |
| Diode | | | | | | | |
| V_{RRM} | max. repetitive reverse voltage | $T_{VJ} = 25^{\circ}\text{C}$ | | | 1200 | V | |
| I_{F25} | forward current | $T_C = 25^{\circ}\text{C}$ | | | 10 | A | |
| I_{F100} | | $T_C = 100^{\circ}\text{C}$ | | | 6 | A | |
| V_F | forward voltage | $I_F = 3\text{A}$ | | | 2.20 | V | |
| | | | | 1.90 | | V | |
| I_R | reverse current | $V_R = V_{RRM}$ | | | * | mA | |
| | * not applicable, see Ices value above | | | | * | mA | |
| Q_{rr} | reverse recovery charge | $V_R = 600\text{V}$ $-di_F/dt = -150\text{A}/\mu\text{s}$ $I_F = 3\text{A}; V_{GE} = 0\text{V}$ | | 0.5 | | μC | |
| I_{RM} | max. reverse recovery current | | $T_{VJ} = 125^{\circ}\text{C}$ | 5 | | A | |
| t_{rr} | reverse recovery time | | 350 | | ns | | |
| E_{rec} | reverse recovery energy | | 0.1 | | mJ | | |
| R_{thJC} | thermal resistance junction to case | | | | 3 | K/W | |
| R_{thCH} | thermal resistance case to heatsink | | | 0.15 | | K/W | |

preliminary

| Package TO-268AA (D3Pak) | | | Ratings | | | |
|--------------------------|------------------------------|--------------|---------|------|------|------|
| Symbol | Definition | Conditions | min. | typ. | max. | Unit |
| I_{RMS} | RMS current | per terminal | | | 70 | A |
| T_{VJ} | virtual junction temperature | | -40 | | 150 | °C |
| T_{op} | operation temperature | | -40 | | 125 | °C |
| T_{stg} | storage temperature | | -40 | | 150 | °C |
| Weight | | | | 5 | | g |
| F_c | mounting force with clip | | 20 | | 120 | N |

Product Marking

Part number

I = IGBT
 X = XPT IGBT
 A = Gen 1 / std
 4 = Current Rating [A]
 IF = Copack
 1200 = Reverse Voltage [V]
 TC = TO-268AA (D3Pak) (2)

| Ordering | Part Number | Marking on Product | Delivery Mode | Quantity | Code No. |
|----------|--------------|--------------------|---------------|----------|----------|
| Standard | IXA4IF1200TC | IXA4IF1200TC | Tube | 30 | 510224 |

| Similar Part | Package | Voltage class |
|--------------|-----------------|---------------|
| IXA4IF1200UC | TO-252AA (DPak) | 1200 |

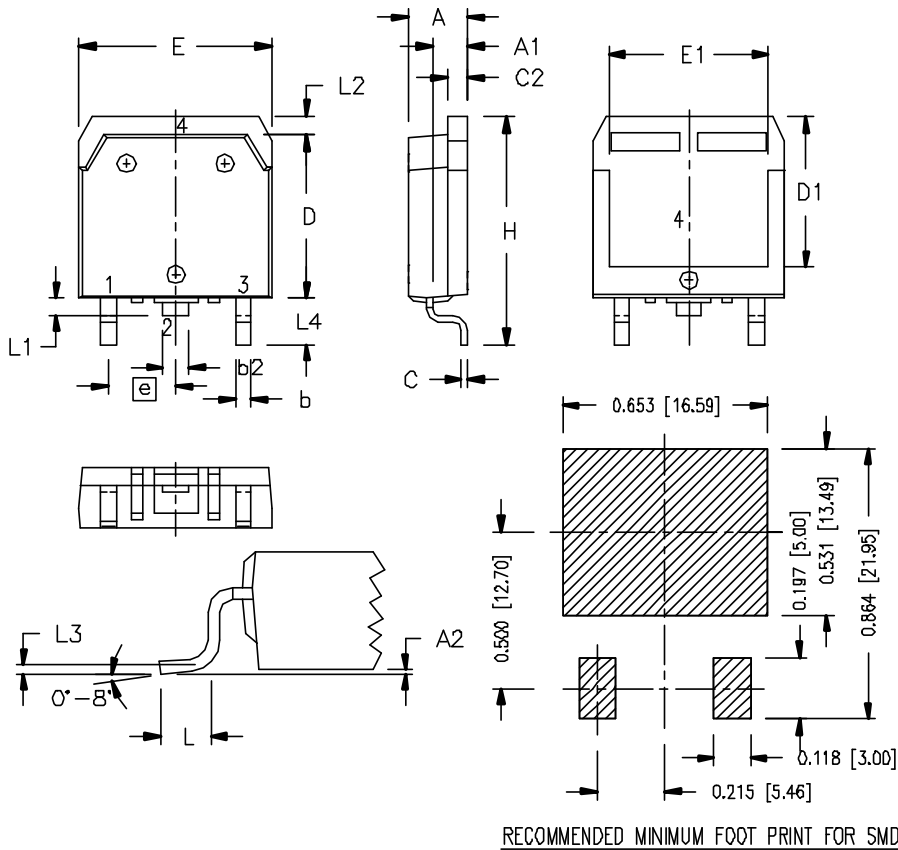
Equivalent Circuits for Simulation

* on die level

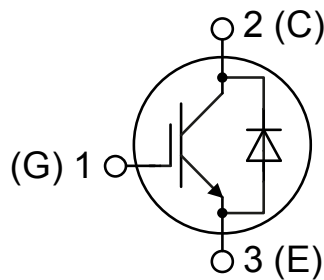
 $T_{VJ} = 150\text{ }^{\circ}\text{C}$


| | IGBT | Diode | |
|-------------|------|-------|----|
| $V_{0\max}$ | 1.1 | 1.25 | V |
| $R_{0\max}$ | 460 | 280 | mΩ |

Outlines TO-268AA (D3Pak)



| Dim. | Millimeter | | Inches | |
|------|------------|-------|-----------|-------|
| | min | max | min | max |
| A | 4.90 | 5.10 | 0.193 | 0.201 |
| A1 | 2.70 | 2.90 | 0.106 | 0.114 |
| A2 | 0.02 | 0.25 | 0.001 | 0.100 |
| b | 1.15 | 1.45 | 0.045 | 0.057 |
| b2 | 1.90 | 2.10 | 0.075 | 0.083 |
| C | 0.40 | 0.65 | 0.016 | 0.026 |
| C2 | 1.45 | 1.60 | 0.057 | 0.063 |
| D | 13.80 | 14.00 | 0.543 | 0.551 |
| D1 | 12.40 | 12.70 | 0.488 | 0.500 |
| E | 15.85 | 16.05 | 0.624 | 0.632 |
| E1 | 13.30 | 13.60 | 0.524 | 0.535 |
| e | 5.45 BSC | | 0.215 BSC | |
| H | 18.70 | 19.10 | 0.736 | 0.752 |
| L | 2.40 | 2.70 | 0.094 | 0.106 |
| L1 | 1.20 | 1.40 | 0.047 | 0.055 |
| L2 | 1.00 | 1.15 | 0.039 | 0.045 |
| L3 | 0.25 BSC | | 0.100 BSC | |
| L4 | 3.80 | 4.10 | 0.150 | 0.161 |





Disclaimer Notice - Information furnished is believed to be accurate and reliable. However, users should independently evaluate the suitability of and test each product selected for their own applications. Littelfuse products are not designed for, and may not be used in, all applications. Read complete Disclaimer Notice at www.littelfuse.com/disclaimer-electronics.